



EQUIPARTS
Repair Parts Specialists

SECURITY FLYER

Fixtures, Parts, and Anti-Ligature Items For Your Facility

STAINLESS STEEL FIXTURES

Tired of Replacing Broken Units? Try Our Stainless Steel Fixtures!



Wall Mounted
Toilet Fixture



Floor Mounted
Toilet Fixture

Metcraft toilet fixtures are designed for high abuse washrooms. These fixtures are fabricated using heavy gauge stainless steel, seamlessly welded to form a one piece, vandal resistant unit. These units flush at 1.6 GPF. They meet and exceed the ASME 112.19.6M for hydraulic performance. These fixtures are offered in a wide variety of models, styles and options. Call for assistance.

WHITE POWDER COATED STAINLESS STEEL FIXTURES

Made of Durable Steel, but Looks Like Porcelain!



Powder
Coated Color

Stainless
Steel

Replace typical vitreous china with water conserving stainless steel fixtures from TMS!

Our stainless steel plumbing fixtures are designed to provide the most reliable, durable and sanitary features demanded in the high abuse washroom market.



Use in:

- Correctional Facilities
- Hospitals
- Schools
- Parks and Recreation
- Problem Areas
- Bariatric Situations



We Carry Security Fixtures For All Applications!
TMS is Your Complete Source for Units and Parts!



TOLL FREE: 800-442-6622 • PITTSBURGH: 412-781-9100 • FAX: 412-781-3085

ACORN PARTS



FOR ACORN QUICK-CLOZ VALVE CARTRIDGE



#41011061

COMPLETE CARTRIDGE ASSEMBLY

For Penal-Trol
January 1971 to present



#41011062

Less bonnet



ACORN H&C AIR-TROL VALVE BODY ASSEMBLY



#41011038

Flo-control assembly (.5 gpm)
January 1985 To July 1990



PENAL-MATIC METERING CARTRIDGE ASSEMBLY



#40621017

For Penal-Trol Valves
January 1986 To Present



DIAPHRAGM

#41011109

For Acorn Air-Control
Pushbutton Assembly
January 1984 To Present



CARTRIDGE ASSEMBLY



#41011144

For Acorn Safti-Trol.
April 1977 to Present



CHECK STOP STRAINER COMPLETE ASSEMBLY

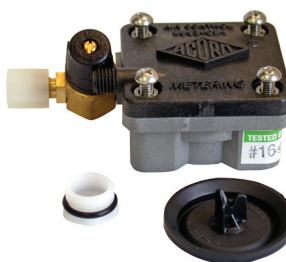


#41011100

For Acorn Plastic Air-Control
Check Stop Strainer Assy.



METERING SERVOMOTOR ASSEMBLY

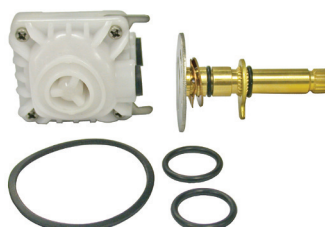


#41011094

January 1984 To Present



CARTRIDGE WITH STEM & PLATE ASSEMBLY



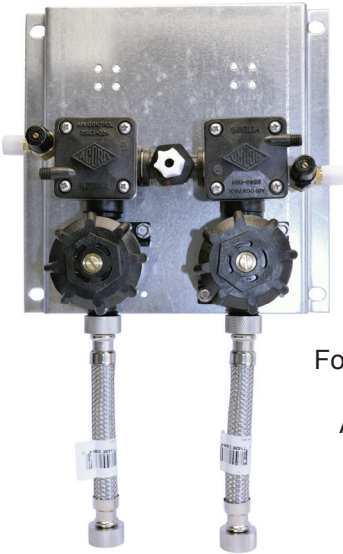
#41011143

For Acorn Safti-Trol Valve
For Apex, Classic, Acme,
& Zenith Valves
April 1977 - Present

ACORN PARTS



HOT & COLD METERING VALVE



#41011233

For Acorn Air-Trol Assemblies
0.5 GPM
Also available in 2.5 GPM



SINGLE TEMP TEE BODY



#41011136



DUAL TEMP TEE BODY - PLASTIC



#41011120



FLOW CONTROLS



#41011114
0.5 GPM



FLOW CONTROL ADAPTER



#41011121



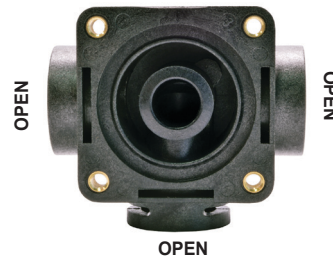
1/4" FERRULE NUT



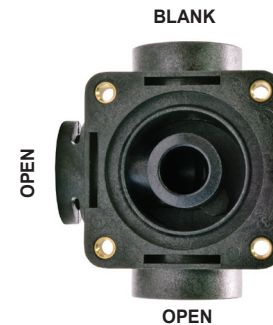
#41011122



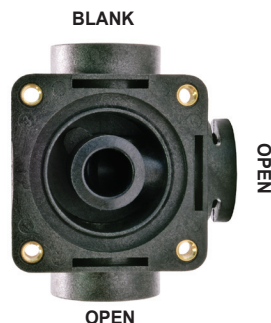
VALVE BODIES



#41011117
Lower
Body Valve



#41011118
Upper
Body Valve - RH



#41011119
Upper
Body Valve - LH

ACORN PARTS



RETAINING CLIP



#41011123



FLOW CONTROL 2.5 GPM - SHOWER



#41011134



DIAPHRAGM ASSEMBLY



#41011130



STOP CHECK ASSEMBLY FOR ACORN

#41011300



ELBOW



#41011113
1/4" NPT x 1/4" OD



PLASTIC COMPRESSION NUT 1/4"



#41011087



DIAPHRAGM RETAINER SIDE OUTLET



#41011232



DIAPHRAGM RETAINER BOTTOM OUTLET



#41011110



FLO-CONTROL TEE



#41011112



SHOWER NOZZLE ASSEMBLY



#41011145

For Acorn Showerhead #851



RIGID TYPE SHOWER HEAD



#41011275

ACORN PARTS

ANTI-LIGATURE LAVATORY FAUCET



Hot and Cold hemispherical pushbuttons, pneumatic valves, conical spout. Available in air, hard wire, or battery operation.

*Many variations available.
Call us with your specifications.*

ANTI-LIGATURE LAVATORY FAUCET



Hot and Cold pushbuttons, pneumatic valves, conical spout. Includes coverplate for 8" widespread retrofit or new construction. Available in air, hard wire, or battery operation.

*Many variations available.
Call us with your specifications.*



ANTI-LIGATURE TOILET PAPER DISPENSER

#92146



Powder coated stainless steel. Auto-releases under load pressure of 40 lbs. Front mounted. Sloped housing. Holds a household size roll of toilet paper.



ANTI-LIGATURE CLOTHING & TOWEL HOLDER

#92147



Powder coated stainless steel. Minimizes potential ligature points. Auto releases with 40 lbs. of pressure. Surface mounted.



ANTI-LIGATURE GRAB BARS



Available in white powder coated stainless steel (shown) or stainless steel. Variety of lengths available. Meets ADA requirements.

*Many variations available.
Call us with your specifications.*

AM. STANDARD

PRISON LAVATORY



#82908

China only with integral drain.

#88642

Self closing hot and cold fitting for 0" to 4" wall.

#88643

Self closing hot and cold fitting for 4" to 9" wall.

BRADLEY PARTS

FOR BRADLEY WASHFOUNTAIN



#05607

Foot Valve

#05608

Repair Kit for Foot Valve



#45827

Strainer-Check Valve

#45827

Repair Kit for Strainer-Check Valve



#45828

Mixing Valve

#05604

Repair Kit for Mixing Valve



#52118

Thermostatic Mixing valve

#SP1152

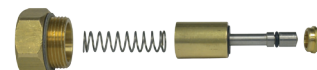
Repair Kit for Thermostatic Mixing valve

STEM KIT FOR B-7 & B-9



#41011239

STEM KIT FOR B-10



#41011041

METCRAFT PARTS



**PNEUMATIC BUTTON
ASSEMBLY**
#40140032



**FLOW CONTROL 90 ELL ASSEMBLY
FOR SINGLE TEMP LAVATORY
AND SHOWER VALVES**

#40140076
0.5 GPM

#40140077
2.5 GPM



**FLOW CONTROL TEE ASSEMBLY
FOR DUAL TEMP LAVATORY
AND SHOWER VALVES**

#40140078
0.5 GPM

#40140079
2.5 GPM



PLUG

#40140609



**NEW STYLE
STOP CHECK/STRAINER**

#40140081



**MANIFOLD INLINE
CONNECTOR**

#40140611



MANIFOLD BASE

#40140610



**PNEUMATIC & METRO-FIT
SERVO REPLACEMENT PARTS**

#41011089



#40140033



STAINLESS STEEL C-CLIP

#40140080



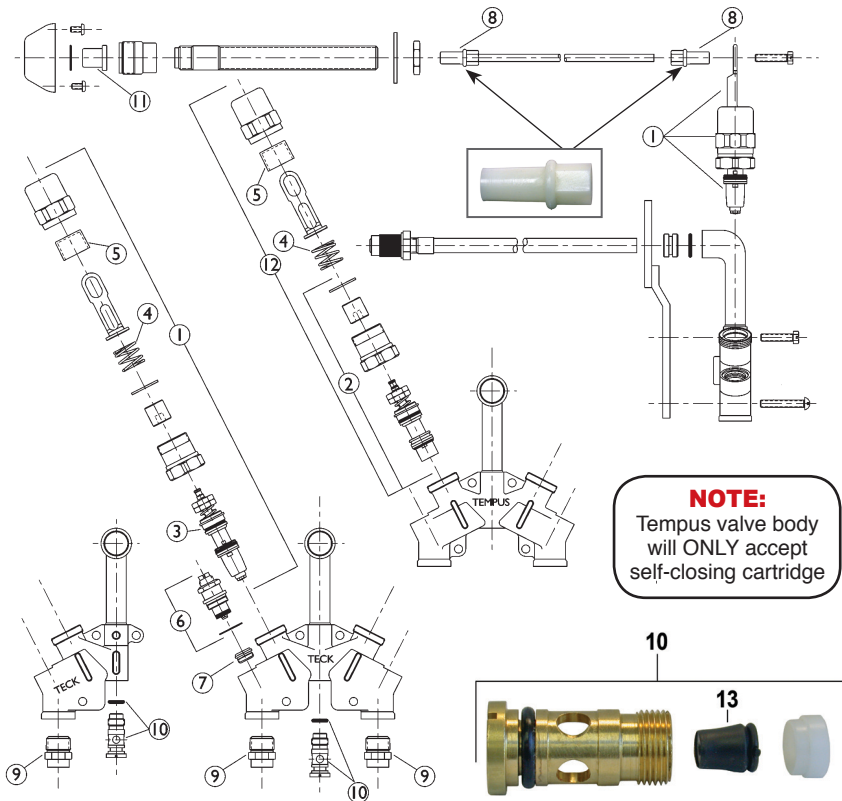
AIR DIAPHRAGM

#41011096

METCRAFT PARTS

TEMPUS II VALVE

NOTE: Tempus Pre-1992 Teck 1992-1998, marking on cast body



NOTE:
Tempus valve body
will ONLY accept
self-closing cartridge

1	TECK prison metering assembly
2	#40140036 TEMPUS Self-Close Cartridge Kit Less Handle
3	#40140174 Teck Metering Cartridge
4	#40140197 Springs
5	#40140198 Plastic Insert
6	#40140065 Check Stop Assembly
7	Renewable Seat
8	#40141401 Push Rod Tips
9	1/2" MIP x Copper Adapter
10	#40140067 2.5 GPM Flow Control Assembly for Eljer and Crane Fixtures
	#40140068 0.5 GPM Flow Control Assembly for American Standard Fixtures
11	VR CP Push Button
12	#40130736 TEMPUS Self-closing Cartridge with Handle
	#40101114 0.5 GPM Flow Control
	#401011135 0.7 GPM Flow Control
	#401011134 2.5 GPM Flow Control

DIAPHRAGM ASSEMBLY



#40140086

WATER DIAPHRAGM KIT



#40140072

TEMPUS I COMPLETE CHECK STOP



#40140069

QUAD RING



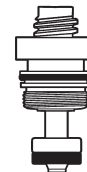
#40140082

CARTRIDGE ONLY FOR TEMPUS II

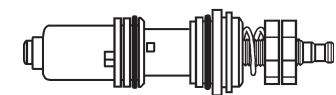


#40140735

TEMPUS II COMPLETE CHECK STOP

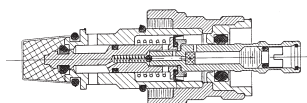


#40140065

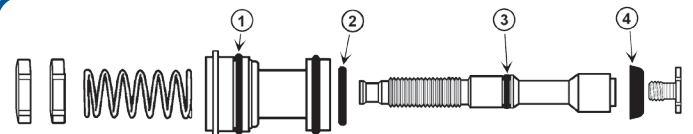


#40140036
NEW PLASTIC
SELF-CLOSING CARTRIDGE

Use Only on Teck Valve



Old Style
Metal Cartridge N.L.A.



#40140071
VALVE REPAIR KIT (Metering & Non Metering)

Includes items 1(2), 2, 3 & 4 plus lube capsule.
Non metering shown.

METCRAFT ANTI-LIGATURE FIXTURES

Metcraft INDUSTRIES INCORPORATED ANTI-LIGATURE LAVATORY

#92149



- Ligature Resistant Enclosure
- Sloped Ledge
- Low Profile Push Buttons
- B1H - Hemispheric Bubbler
- Angled Side Panels Thwart Ligature Attempts

Metcraft INDUSTRIES INCORPORATED STAINLESS STEEL LAVATORY

#92152



- 4" Centers
- Powdered Coated 304
- Stainless Steel
- Carrier Mounted or Bracket Mounted
- Replacement for American Standard Lucerne

WALL HUNG, SIPHON JET TYPE

#92150



- Designed for High Security Areas
- Fabricated Using 14-Gauge Type 304 Stainless Steel
- Seamlessly Welded
- Vandal Resistant
- Powdered Coated White
- Replaces American Standard Aftwall
- Top Mount Spud



ANTI-LIGATURE TOILET



- Heavy Gauge
- Integrally Welded Skirt
- Inhibits Its Use As a Tie Hold
- Anti-Flood

*Many variations available.
Call us with your specifications.*



ANTI-LIGATURE GRAB BARS



Grab bars with enclosure plates are available in various lengths and configurations to suit your requirements. The enclosure plates are welded to the grab bars as a deterrent to suicide attempts.



ANTI-LIGATURE SHOWER

#92151



- PSH - Shower Heads have a conical shape that is virtually impossible to use as a tie hold.
- Hugged Edges
- Low Profile Push Buttons
- Recessed Soap Tray



METCRAFT ANTI-LIGATURE FIXTURES

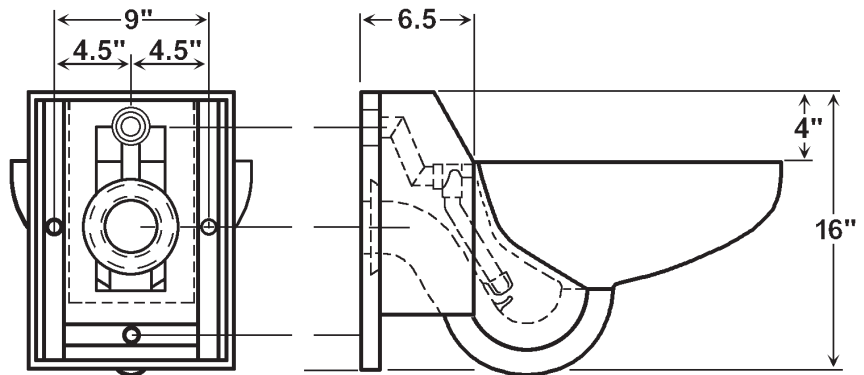


REPLACE DISCONTINUED 3-BOLT WALL HUNG CHINA TOILETS From American Standard, Crane, Eljer, and Kohler WITH METCRAFT'S 3-BOLT WALL HUNG BACK SUPPLY



#92155

These Toilet Fixtures are designed for high security areas without an accessible pipe chase. The fixtures are fabricated using 14-gauge type 304 stainless steel, seamlessly welded to form a one piece, vandal resistant unit. Internal piping is stainless steel. Exposed surfaces are polished to a satin finish, except for the integral seat which is polished to a bright mirror finish.

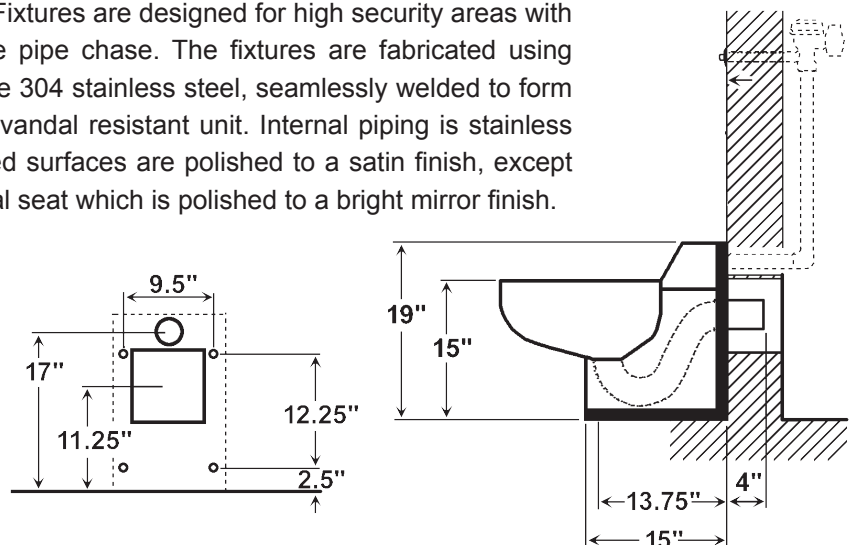


REPLACE FLOOR MOUNTED BACK SUPPLY/BACK OUTLET INTEGRAL SEAT CHINA TOILETS From American Standard, Crane, and Kohler WITH METCRAFT'S FLOOR MOUNTED BACK SUPPLY/BACK OUTLET INTEGRAL SEAT



#92156

These Toilet Fixtures are designed for high security areas with an accessible pipe chase. The fixtures are fabricated using 14-gauge type 304 stainless steel, seamlessly welded to form a one piece, vandal resistant unit. Internal piping is stainless steel. Exposed surfaces are polished to a satin finish, except for the integral seat which is polished to a bright mirror finish.



SYMMONS

FRE-FLO INSTITUTIONAL SHOWER HEAD

#50952



- Single mode shower head at 30 degree spray angle
- Adjustable spray pattern
- Vandal resistant
- 2.5 gpm
- Polished chrome finish

SYMMONS VANDAL PROOF SHOWER HEAD INSERT

#53382



Male Thread
For #50952 shower head

SYMMONS UNIVERSAL INSTITUTIONAL SHOWER HEAD

#SP3359



- 1/2" sweat connection
- Adjustable spray
- Includes mounting bracket and fasteners

CP QUICK RELEASE HOSE COUPLING

#88562



1/2 Male x 1/2 Female

SHOWER HEAD ADAPTER WITH WASHER

#88563



SYMMONS SHOWER HANDLES



#46474

Fits C-5
Spindle Assy.



#46475

Fits TA-10
Spindle Assy.



#83495

Fits TA-10
Spindle Assy.

LIGATURE RESISTANT SHOWER TRIM KIT

#86297



- Specially designed to minimize opportunity for user self-harm.
- Uses the Symmons Temptrol pressure balancing valve to provide protection from scalding
- Vandal-resistant handle
- Fits any Temptrol shower valve
- Includes handle and trim plate
- Easy three screw installation

ANTI LIGATURE WALL CONNECTION FOR HAND SHOWER

#88564



- Solid brass
- 1/2" inlet/outlet
- Accepts 1/2" hose
- Vandal proof

INSTITUTIONAL SHOWER HEAD

#SP4610



- With mounting bracket
- 30 degree spray angle (standard) or 15 degree spray angle (optional)
- Single mode
- Non-adjustable by user, and has no removable parts
- 2.5 gpm
- Polished chrome finish

SYMMONS PRESSURE BALANCING SPINDLE ASSEMBLIES



#45431 (C-5)
Stem

#49309
Repair Kit
for #45431



#45430 (TA-10)
Stem

#45868
Repair Kit
for # 45430

WILLOUGHBY PARTS



S.S. PUSH BUTTON PUMP ASSEMBLY

#40110101



For single temperature pneumatic metering valve assembly with flexible supply. Includes push button and sleeve.



PUSH BUTTON PUMP

#40110102



For cabinet shower replacement only. Not field serviceable



METERING CARTRIDGE

#41031006



For Willoughby Dual Temp Metering Valve After 1990, and ME2 Mechanical Metering Dual Temp Lavatory Valve Assembly Model #WM2B After 2000



COMPLETE PANEL MOUNTED FLUSH ACTUATOR ASSY.

#41031087



REPAIR KIT FOR ABOVE ACTUATOR ASSY.

#41031086



PM SERIES PNEUMATIC VALVE REPAIR KITS



#40110104
Motor Assembly Kit



#41011089
Water Diaphragm Assembly



#40120099
Diaphragm Assembly Kit



#41031037
Valve Base Seat and O-Ring

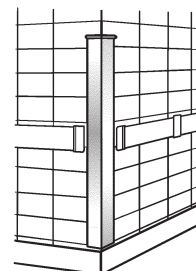
STAINLESS STEEL CORNER GUARDS

#10427 1-1/2" x 1-1/2" x 48"

#10427SA 1-1/2" x 1-1/2" x 48"

#10428 3-1/2" x 3-1/2" x 48"

#10428SA 3-1/2" x 3-1/2" x 48"



- Use in hospitals, nursing homes, commercial kitchens, or any place where corners are subject to abuse.

- Can be manufactured in special sizes other than the standard.

- Custom angles are available.

- Although double backed foam tape or screws may be specified, TMS recommends an adhesive installation. When properly applied it can be completed quickly, giving a long-lasting, neatly finished job. Use #10427SA and #10428SA.

- Designed for indoor use. Outdoor materials also available.

WILLOUGHBY LIGATURE RESISTANT FIXTURES



LIGATURE RESISTANT SINK



- 22 7/8" wide behavioral health care lavatory
- Welded, type 304 stainless steel trap enclosure
- Aquasurf® solid surface integrated lavatory bowl and countertop with no-drip edge
- Machined stainless ligature-resistant spray head and drain.

*Many variations available.
Call us with your specifications.*



LIGATURE RESISTANT GRAB BARS



- Includes integral ligature-resistant closure plate
- Exposed flanges

#93026 18"

#93027 24"

#93028 36"

#93029 42"

#93030 48"

LIGATURE RESISTANT TOILET



#93032

- Powder Coated
- Type 304 Stainless Steel
- Seamlessly Welded
- Top Spud



LIGATURE RESISTANT FLUSH VALVE COVER



#93023

- Top spud flush valve cover
- Sloped top
- Custom sizes available
- Optional gloss powder coated enamel finish available



LIGATURE RESISTANT MIRRORS



#93024

- 12" x 10.5"
- One-piece security mirror
- Front Mounted
- Highly-polished reflective stainless steel surface

#93025

- 16.5" x 12.5"
- One-piece security mirror
- Front Mounted
- Highly-polished reflective stainless steel surface



LIGATURE RESISTANT WALL SHOWER



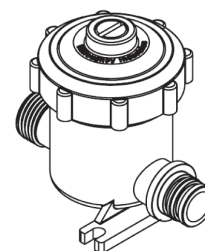
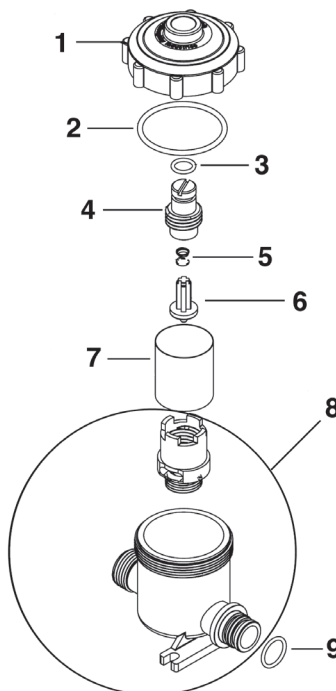
#93031

- Wall Shower (built in)
- Separate Shower Head and Push Button Panels
- Multiple Valve Options Available
- Ligature-Resistant Shower Head and Valve
- Heavy-gauge stainless steel

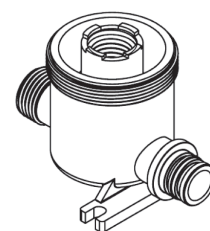
WILLOUGHBY PARTS

CHECKSTOP #980183

Item	Part #	Description
1	#41030192	Strainer Cap
2	#980165	O-Ring #130
3	#980163	O-Ring #12
4	#41030200	Checkstop Screw
5	#41030201	Checkstop Strainer Spring
6	#41030194	Plunger
7	#41030168	Strainer Screen
8	#41030580	Checkstop Base & Flow Restrictor
9	#41030164	O-Ring



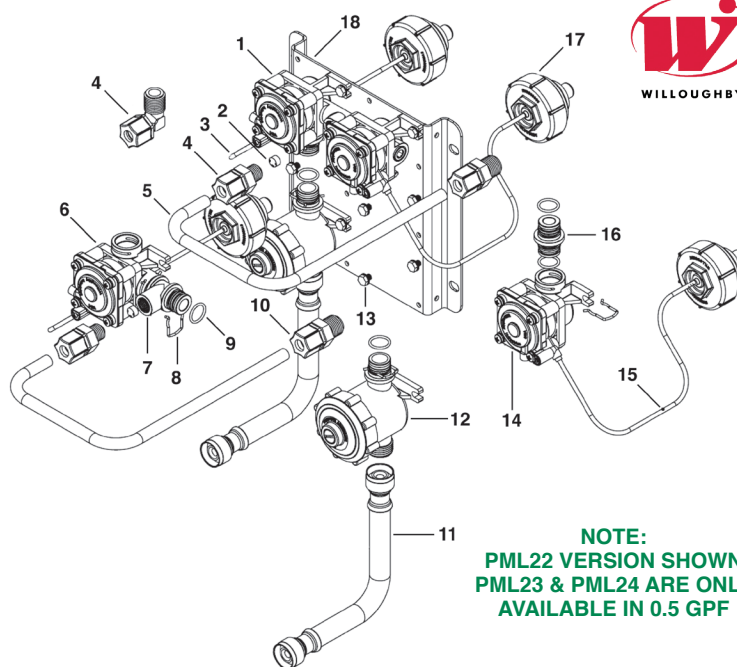
980183 ASSEMBLY



41030580 ASSEMBLY

PML22 MANIFOLD VALVE

Item	Part #	Description
1	#980407	PSL2-PML2 Valve Assembly
2	#41031013	Flow Control 0.5 GPM (Red)
3	#600470	Pneumatic Tubing, 1/16" ID (Red)
4	#40901170	Connector, 3/8" Tub x 1/4" MPT
5	#600523	Flexible Tubing 3/8" OD, 20 ft total
6	#980406R	Pneumatic Valve Assembly
7	#41030196	Plastic Valve "T"
8	#41030140	Spring Clip
9	#41030164	O-ring, #15
10	#41030566	(Optional) Connector 3/8" Tube x 3/8" MPT
	#320577	(Optional) Elbow, 3/8" Tube x 3/8" MPT
11	#980506	(Optional) 6" Stainless Steel Flex Hose
	#980520	(Optional) 20" Stainless Steel Flex Hose
12	#41030183	Checkstop Assembly
13	#800133	#10-16 Self Tap Type B Hex Head Screw
14	#980406L	Pneumatic Valve Assembly
15	#600475	Pneumatic Tubing, 1/16" ID x 1/8" OD (Blue)
16	#41030197	Plastic Valve Coupling
17	#600307	(Standard) Pneumatic Pushbutton
17	#600306	(Optional) Anti-Suicide Pneumatic Pushbutton
17	#600311	(Optional) Palm Pneumatic Pushbutton
18	#9805022	PML22 Valve Mounting Bracket
18	#9805023	PLM23 Valve Mounting Bracket
18	#9805024	PLM24 Mounting Bracket



NOTE:
PML22 VERSION SHOWN
PML23 & PML24 ARE ONLY
AVAILABLE IN 0.5 GPF



#41031013



#40901170



WILLOUGHBY PARTS

SINGLE PNEUMATIC METERING VALVE ASSEMBLY #980406PL

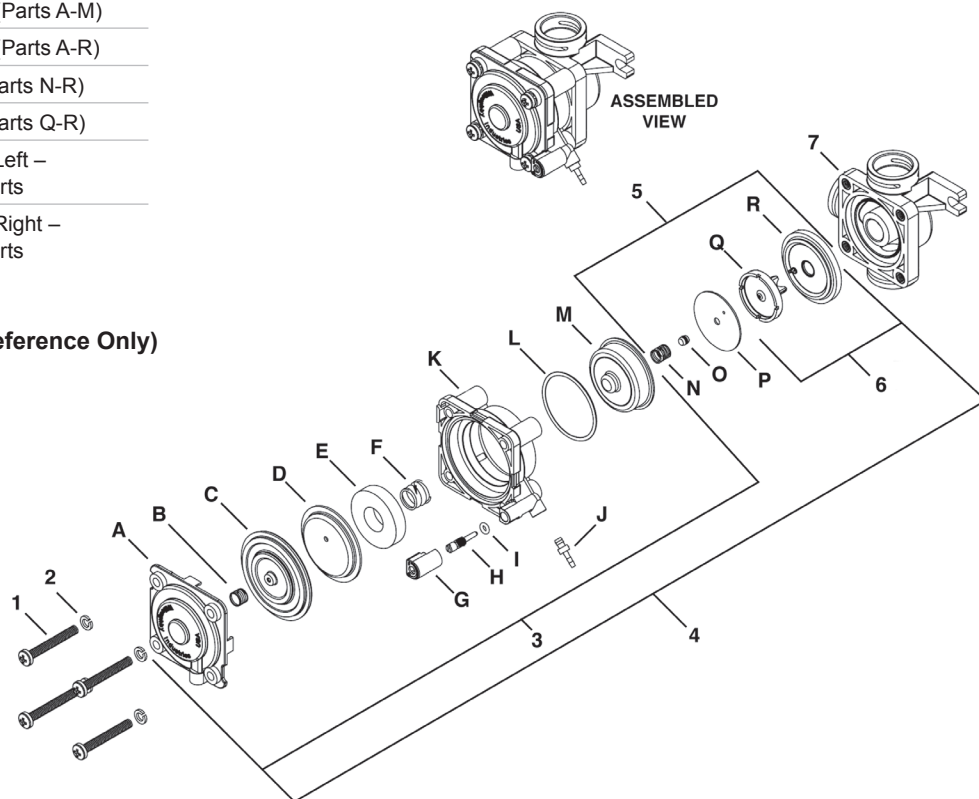


Item	Part #	Description
1	#980001	#8-32 x 1/4" Screw
2	#980002	Split Lock Washer
3	#40110104	PVK-1M Repair Kit (Parts A-M)
4	#41031110	PVK-4M Repair Kit (Parts A-R)
5	#41020099	PVK-2 Repair Kit (Parts N-R)
6	#41011089	PVK-3 Repair Kit (Parts Q-R)
7	#41030420	Single Temp Base, Left – Plugged Port w/Inserts
	#41030421	Single Temp Base, Right – Plugged Port w/Inserts

INDIVIDUAL PARTS LIST

(Available Only As Part Of A Kit – For Reference Only)

- A – Air Side Top Cover
- B – Air Side Spring
- C – Air Side Diaphragm
- D – Magnet Cup
- E – Magnet
- F – Magnet Spring
- G – Time Adjusting Cover
- H – Timer Adjusting Screw (Brass)
- I – O-ring for Timer Adjusting Screw
- J – Push-in Hose Barb (Brass)
- K – Valve Motor Body
- L – O-ring
- M – Barrier Cup
- N – Water Side Spring
- O – Rubber Bumper
- P – Water Side Actuating Disk
- Q – 3 Pronged Insert
- R – Water Side Diaphragm



ZURN TEMP-GARD INSTITUTIONAL SHOWER HEAD



#41031090



Bronze body with hard chrome plated finish. Maximum flow rate 2.5 gpm at 80 PSI. Variable flow orifice feature maintains constant flow rate. Fixed stream head. 1/2" NPT female threaded inlet. Four mounting screws provided. Vandal resistant. Shower head angle is 30°.

ZURN TEMP-GARD INSTITUTIONAL SHOWER HEAD WALL MOUNT W/ BALL JOINT SOLID BRASS



#41031091



Ball joint solid brass chrome plated shower head with bronze body institutional wall mount with hard chrome plated finish. Maximum flow rate 2.2 gpm at 80 PSI. Pressure compensating flow control feature maintains constant flow rate. 1/2" NPT female threaded inlet, fixed body width spray pattern. Four mounting screws provided. Vandal resistant.

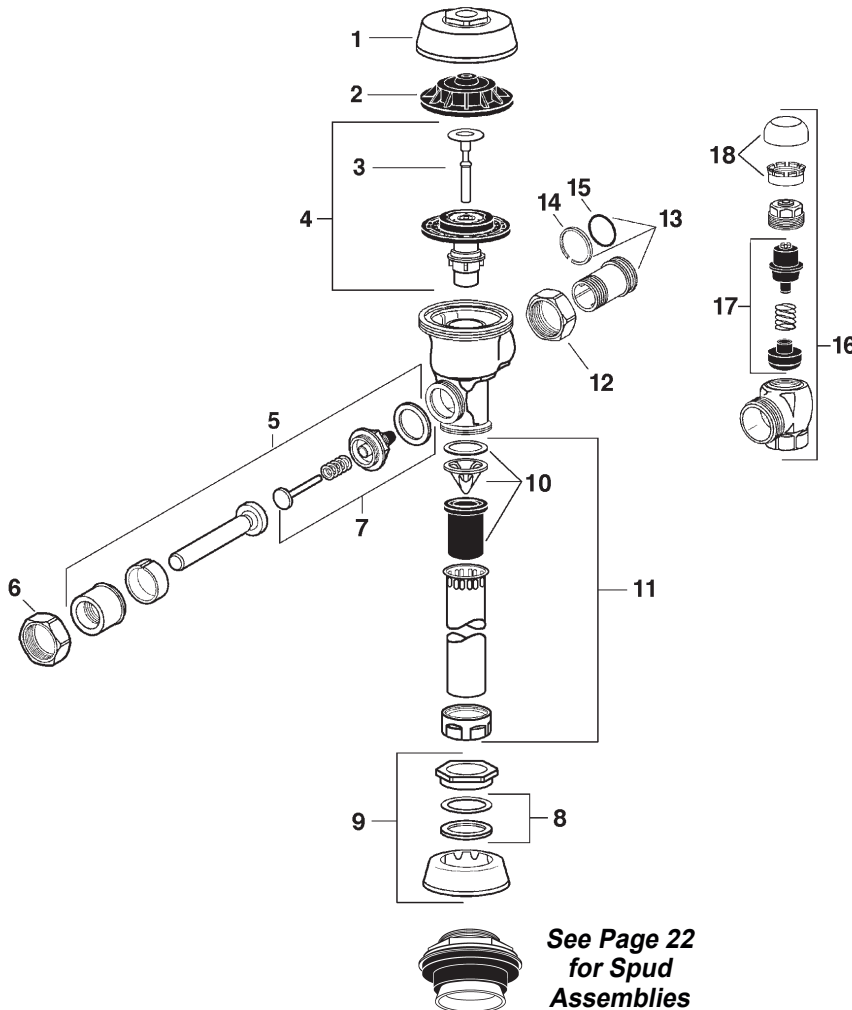


SEC0615



SLOAN ROYAL - New Style Since 1998

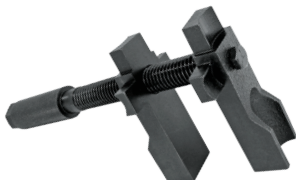
With Dual Filtered Bypass



**See Page 22
for Spud
Assemblies**

#03145

MULTI-PURPOSE INSIDE SPUD WRENCH

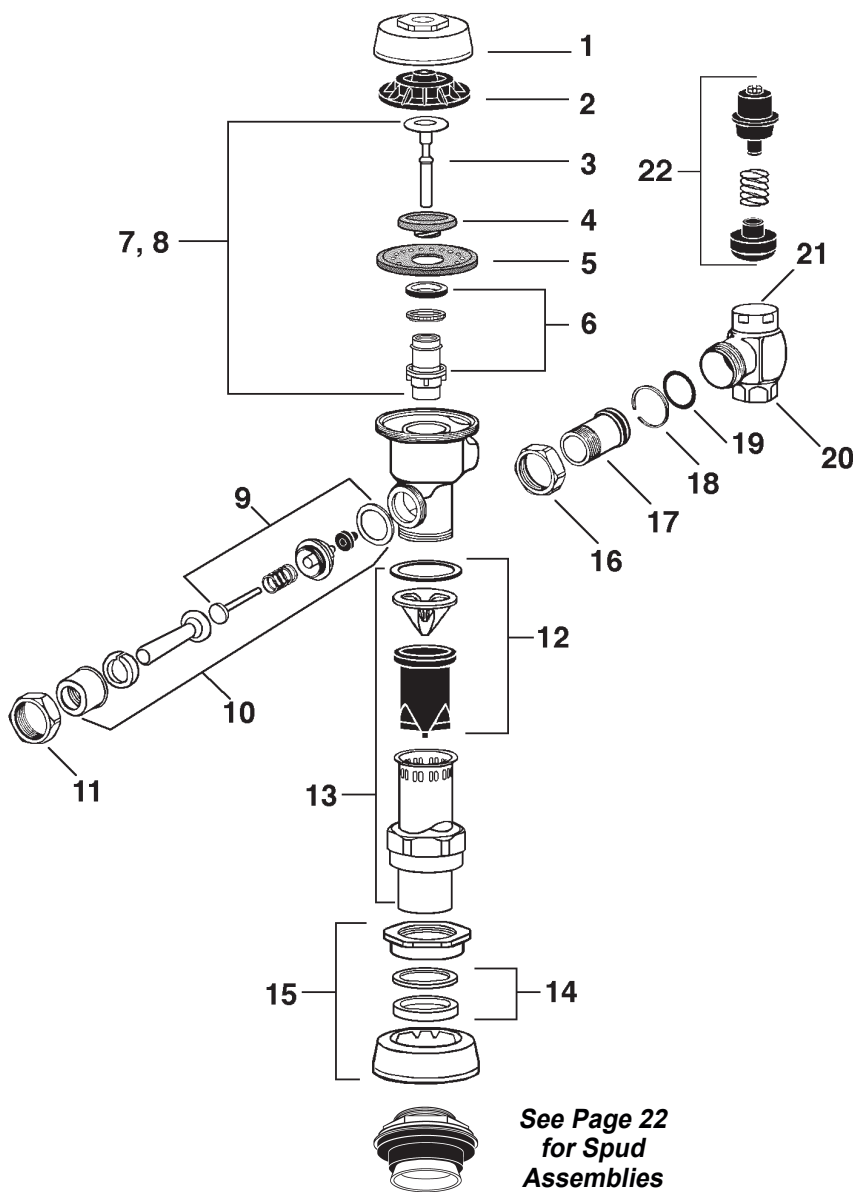


This expansion spud wrench has four sizes in one. Rust resistant hardened and tempered jaws. Made of heavy duty iron. Also used for pipe nipples up to 3-1/2" diameter.

1	#08049	A72	C.P. Cover
2	#08050	A71	Inside Cover
3	#08004	A19AC	Closet R. Valve (White)
	#08005	A19AU	Urinal R. Valve (Black)
	#08345	A19ALC	Low Consumption R. Valve (Green)
4	#08563	A1038A	3.5 Closet Retro Kit
	#08752	A1044A	2.4 Closet Retro Kit
	#08564	A1041A	1.6 Closet Low Consumption
	#08937	A1045A	1.2 Closet Low Consumption
	#08562	A1037A	1.5 Urinal Retro Kit
	#08565	A1042A	1.0 Urinal Low Consumption
5	#08566	A1043A	0.5 Urinal Low Consumption
5	#08069	B73A	A.D.A. Handle Assy
6	#08054	A6	C.P. Handle Nut
7	#08439	B51A	Triple Seal Handle Kit
8	#08020	TMS	1-1/2" Gasket Kit
	#08021	TMS	1-1/4" Gasket Kit
	#08022	TMS	3/4" Gasket Kit
9	#08017	F5A	1-1/2" Coupling Assy
	#08018	F5A	1-1/4" Coupling Assy
	#08019	F5A	3/4" Coupling Assy
10	#08438	V651A	Vacuum Breaker Repair Kit
11	#08467	V600AA	1-1/2" x 9" Vacuum Breaker
	#08466	V600AA	1-1/4" x 9" Vacuum Breaker
	#08465	V600AA	3/4" x 9" Vacuum Breaker
12	#08040	H550	Tailpiece Coupling Nut
13	#08039	H551A	Adj. Tailpiece 2-1/16" (Other Lengths Available)
14	#08038	H552	Locking Ring
15	#08037	H553	"O" Ring
16	#08460	H700A	3/4" V/R Control Stop
	#08464	H700A	1" V/R Control Stop
17	#08032	H541ASD	Control Stop Repair Kit For 3/4" or 1"
18	#08322	H1010ABX	V/R Control Stop Cap Assembly for 3/4" or 1"

SLOAN ROYAL - Old Style Up To 1998

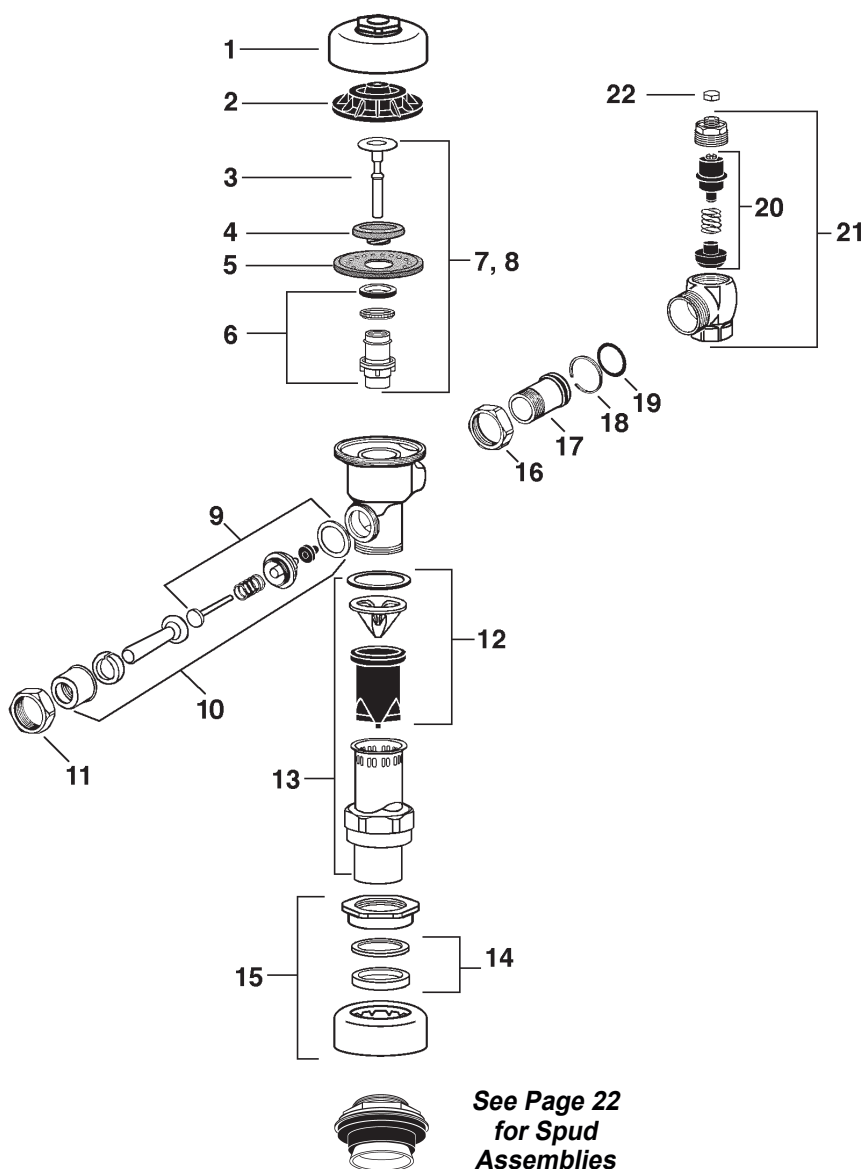
Manufactured Up To 1998



1	#08049	A72	C.P. Cover
2	#08050	A71	Inside Cover
	#08004	A19AC	Closet R. Valve (White)
	#08005	A19AU	Urinal R. Valve (Black)
3	#08052	A19ACM	Closet R. Valve Brass (Old Style)
	#08345	A19ALC	Low Consump. R. Valve (Green)
	#08053	A19AUM	Urinal R. Valve Brass (Old Style)
4	#08003	A15A	Molded Disc
	#08002	A156A	Diaphragm (Common)
5	#08051	A56A	Diaphragm (Old Style)
ADJUSTABLE GUIDES			
	#08006	A163A	Standard Guide
6	#08252	A152A-5301032	For 3.5 GPF Closet
	#08348	A151A	For 1.6 GPF Closet
	#08349	A155A	For 1.0 GPF Urinal
7	#08000	A38A	3.5 Closet Water Saver Kit
	#08571	A44A	2.4 Closet Retro Kit
	#08114	A41A	1.6 Closet Low Consumption
8	#08001	A37A	1.5 Urinal Retro Kit
	#08115	A42A	1.0 Urinal Low Consumption
9	#08007	B50A	Handle Repair Kit (Plastic)
	#08043	C64A	Handle Repair Kit (Brass)
10	#08008	B32A	C.P. Handle Assy.
	#08069	B73A	A.D.A. Handle Assy.
11	#08054	A6	C.P. Handle Nut
12	#08012	V551A	V/B Repair Kit
CHROME PLATED VACUUM BREAKERS			
	#08014	V500AA	1-1/2" x 9" Closet
13	#08015	V500AA	1-1/4" x 9" Urinal
	#08016	V500AA	3/4" x 9" Urinal
	#08020	TMS	1-1/2" Gasket Kit
14	#08021	TMS	1-1/4" Gasket Kit
	#08022	TMS	3/4" Gasket Kit
	#08017	F5AT	1-1/2" Coupling Assy.
15	#08018	F5AU	1-1/4" Coupling Assy.
	#08019	F5AW	3/4" Coupling Assy.
16	#08040	H550	Tailpiece Coupling Nut
17	#08039	H551A	Adjustable Tailpiece 2-1/16" (Other Lengths Available)
18	#08038	H552	Locking Ring
19	#08037	H553	"O" Ring
20	**	Control Stop	(See Page 24)
21	**	C.P. Stop Covers	(See Page 24)
22	#08033	H543ASD	3/4" Control Stop Repair Kit
	#08032	H541ASD	1" Control Stop Repair Kit

SLOAN REGAL

Competitive Style



See Page 22
for Spud
Assemblies

1	#08083	R10	C.P. Cover
2	#08050	Inside Cover	
3	#08004	A19AC	Closet R. Valve (White)
	#08005	A19AU	Urinal R. Valve (Black)
	#08345		Closet/Urinal R. Valve (Green)
4	#08003	A15A	Molded Disc
5	#08002	A156A	Diaphragm
ADJUSTABLE GUIDES			
6	#08006	A163A	Standard Guide
	#08252		For 3.5 GPF Closet
	#08348		For 1.6 GPF Closet
	#08349		For 1.0 GPF Urinal
7	#08000	A38A	3.5 Closet Water Saver Kit
	#08114	A41A	1.6 Closet Low Consumption
8	#08001	A37A	Urinal Retro Kit - 1.5 GPF
	#08115	A42A	Urinal Retro Kit - 1.0 GPF
9	#08007	B50A	Handle Repair Kit (Plastic)
10	#08008	B32A	C.P. Handle Assy.
	#08069	B73A	A.D.A. Handle Assy.
11	#08054		C.P. Handle Nut
12	#08012	V551A	V/B Repair Kit
CHROME PLATED VACUUM BREAKERS			
13	#08014	V500AA	1-1/2" x 9" Closet
	#08015	V500AA	1-1/4" x 9" Urinal
	#08016	V500AA	3/4" x 9" Urinal
14	#08020		1-1/2" Gasket Kit
	#08021		1-1/4" Gasket Kit
	#08022		3/4" Gasket Kit
15	#08142		1-1/2" Coupling Assy
	#08143		1-1/4" Coupling Assy
	#08144		3/4" Coupling Assy
16	#08040		Tailpiece Coupling Nut
17	#08039		Adj. Tailpiece 2-1/16" (Other Lengths Available)
18	#08038		Locking Ring
19	#08037		"O" Ring
20	#08032		Control Stop Repair Kit For 3/4" or 1"
	#08471		1" Screwdriver Stop
21	#08469		3/4" Screwdriver Stop
22	#80793		C. P. Cover

Troubleshooting And Maintaining The Regal Flush Valve

1 PROBLEM: VALVE CLOSSES OFF IMMEDIATELY

- CAUSE:**
- A) Ruptured or damaged diaphragm.
 - B) Enlarged by-pass orifice from corrosion or damage.
- SOLUTION:** A&B) Install new diaphragm or inside parts kit to correct above problems and update flushometer.

2 PROBLEM: LEAKING AT HANDLE ASSEMBLY

- CAUSE:**
- A) Handle seal may have deteriorated.
 - B) Handle gasket has been omitted.
 - C) Valve is old style and handle packing is worn.
- SOLUTION:**
- A) Install new seal or handle repair kit.
NOTE: The handle seal will easily slide right onto the bushing if it is wet.
 - B) Install handle gasket.
 - C) Install handle repair kit.

3 PROBLEM: LENGTH OF FLUSH TOO SHORT

- CAUSE:**
- A) Diaphragm assembly and guide assembly are not hand tight.
 - B) Enlarged by-pass orifice from corrosion or damage.
 - C) Black urinal relief valve in closet flushometer.
 - D) Low consumption kit installed in non-low consumption fixture.
 - E) Handle assembly is worn.
- SOLUTION:**
- A) Screw the two assemblies hand tight.
 - B) Install diaphragm or inside parts kit.
 - C) Install proper white closet relief valve.
 - D) Replace with proper inside parts kit.
 - E) Install handle repair kit.

4 PROBLEM: LENGTH OF FLUSH TOO LONG OR FAILS TO CLOSE OFF

- CAUSE:**
- A) Relief valve is not seating properly or by-pass orifice is clogged because of foreign material, or by-pass orifice is closed by an invisible gelatinous film from "overtreated" water.
 - B) Line pressure has dropped and is not sufficient to force relief valve to seat.
 - C) White closet relief valve has been used in a urinal valve.
 - D) Inside cover is cracked or damaged.
- SOLUTION:**
- A) Disassemble the working parts and wash thoroughly.
NOTE: Size of the orifice in the by-pass is of utmost importance in the proper metering of water into the upper chamber of the valve. Do not enlarge or damage this orifice. Replace inside kit if cleansing does not correct problem.
 - B) Shut off all control stops until pressure has been restored, then open them again.
 - C) Replace with black urinal relief valve.
 - D) Replace the inside cover.

5 PROBLEM: INSUFFICIENT VOLUME OF WATER TO ADEQUATELY SIPHON FIXTURE

- CAUSE:**
- A) Control stop not open enough.
 - B) Urinal valve parts inside a closet valve.
 - C) Low consumption valve installed on a non-low consumption valve fixture.
 - D) Water saver kit installed in old, non-water saver bowl.
 - E) Inadequate volume or pressure at supply.
- SOLUTION:**
- A) Adjust control stop for desired delivery of water.
 - B) Replace inside urinal parts with proper closet valve parts from TMS.
 - C) Replace with proper inside parts kit.
 - D) Position refill head on guide so that side 1 is in up position.
 - E) If no gauges are available to properly measure supply pressure or volume of water at the valve, then remove the relief valve from the inside parts kit, reassemble the valve, and open the control stop.
If the fixture siphons, more water volume is required. If a 3.5 GPF inside parts kit is installed in the valve, then first flip the refill head (under the diaphragm) to obtain a 4.5 GPF volume. If this volume is still inadequate, remove the flow ring from the guide to obtain a 6.5 GPF volume. If additional flow is still required, try a low pressure guide kit.
If fixture does not siphon or if a low consumption fixture is installed, or if the above steps do not prove satisfactory, steps must be taken to increase the pressure and/or supply.

6 PROBLEM: LEAKING AT TOP OF VACUUM BREAKER

- CAUSE:**
- A) Rubber vacuum breaker boot or gasket has deteriorated.
- SOLUTION:**
- A) Install new vacuum breaker repair kit.

7 PROBLEM: LEAKING AT BOTTOM OF VACUUM BREAKER TUBE OR AROUND COUPLING

- CAUSE:**
- A) Coupling gaskets have deteriorated.
 - B) Spud washer and/or spud have deteriorated.
- SOLUTION:**
- A) Install proper new coupling gasket kit.
 - B) Install proper new spud washer and/or complete new spud assembly.

8 PROBLEM: LEAKING BETWEEN VALVE AND CONTROL STOP

- CAUSE:**
- "O" ring and/or locking ring have deteriorated.
- SOLUTION:**
- Replace "O" ring and locking ring simultaneously.

9 PROBLEM: CHATTERING NOISE IN FLUSHOMETER

- CAUSE:**
- A) Diaphragm has been installed upside down.
 - B) Inside cover has become distorted from wear, freezing or abuse.
- SOLUTION:**
- A) Replace the segment diaphragm to the proper position as instructed by markings on the diaphragm.
 - B) Replace inside cover.

CALL FOR TECHNICAL ASSISTANCE!

SLOAN REPAIR PARTS

DIAPHRAGMS



#08002 (A156A)
Common



#08051 (A56A)
Old Style
W/ Copper Ring

CLOSET RELIEF VALVES



#08004 (A19AC) White Plastic
(Also used in 3.0 GPF urinals)

#08052 (A19ACM) Old Style Brass

#08427 (A19AL) Blue 2.4 GPF



URINAL RELIEF VALVES

#08005 (A19AU) Black Plastic

#08053 (A19AUM) Old Style Brass

CLOSET/URINAL RELIEF VALVE

#08345 (A19ALC) Green - Low Consumption

VORTEX DIAPHRAGMS

*Filtered Synthetic Rubber with Bypass
and Vortex Cleansing Action*



#83359 (SV20AC)
Vortex Diaphragm Repair
Kit For CLOSET

#85177 (SV20AU)
Vortex Diaphragm Repair
Kit For URINAL

MOLDED DISC



#08003 (A15A)

COVERS



#08049 (A72)
Chrome Plated Cover
For Royal



#08083 (R10)
Chrome Plated Cover
For Regal



#08050 (A71)
Plastic Inside Cover



#08301 (A11)
Old Style Inside Cover
(Replaces old brass inside cover)

GUIDES



#08006 (A163A)
Adjustable Guide
(Standard)



#08252 (A152A)
Adjustable Guide
For 3.5 GPF
Water Saver
Closet Kit



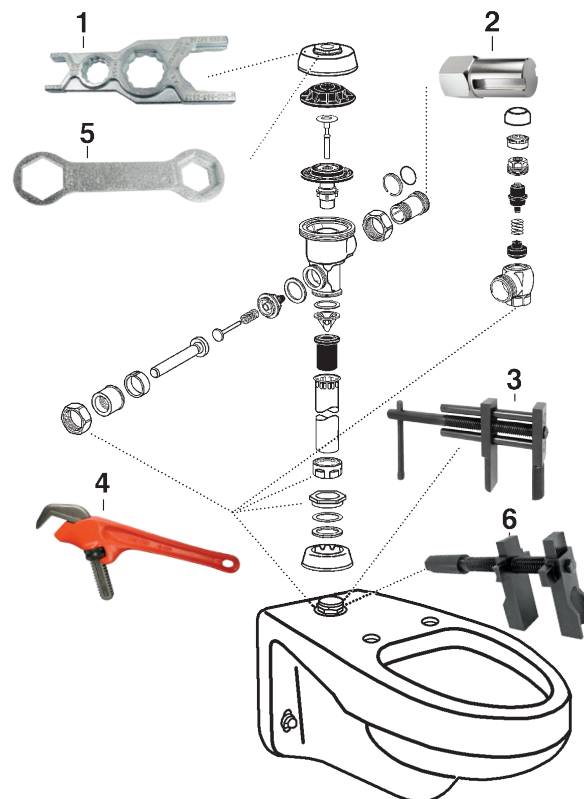
#08348 (A151A)
Adjustable Guide
For 1.6 GPF
Low Consumption
Closet



#08572 (A157)
Adjustable Guide
For 0.5 GPF
Low Consumption
Urinal

#08349 (A155A)
Adjustable Guide
For 1.0 GPF
Low Consumption
Urinal

FLUSHOMETER TOOLS



1. **#08047** Sloan Super Wrench
2. **#08063** Tailpiece Removing Tool
3. **#03118HD** Spud Wrench
4. **#08070** Non-Marking Valve Wrench
Great for faucets too!
5. **#08010** Cover and Nut Removing Tool
6. **#03145** Multi-Purpose Inside Spud Wrench

SLOAN REPAIR PARTS

TMS RETRO KITS

Just Drop In!

Royal Dual-Filtered By-Pass



#08563

3.5 GPF
Dual Filtered By-Pass
Closet Retro Kit

#08752

2.4 GPF
Dual Filtered By-Pass
Closet Retro Kit

#08564

1.6 GPF
Dual Filtered By-Pass
Closet Retro Kit
Low Consumption

#08937

1.2 GPF
Dual Filtered By-Pass
Closet Retro Kit
Low Consumption

#08562

1.5 GPF
Dual Filtered By-Pass
Urinal Retro Kit

#08565

1.0 GPF
Dual Filtered By-Pass
Urinal Retro Kit
Low Consumption

#08566

0.5 GPF
Dual Filtered By-Pass
Urinal Retro Kit
Low Consumption

#82110

0.25 GPF
Dual Filtered By-Pass
Urinal Retro Kit
Low Consumption

#83612

0.13 GPF
Dual Filtered By-Pass
Urinal Retro Kit
Low Consumption

Regal / Royal



#08057

4.5 GPF
Closet Retro Kit
For Old Style

#08000

3.5 GPF
Closet Retro
Watersaver Kit

#08571

2.4 GPF
Closet Retro Kit

#08114

1.6 GPF
Closet Retro Kit
Low Consumption

#08001

1.5 GPF
Urinal Retro Kit

#08115

1.0 GPF
Urinal Retro Kit
Low Consumption

#08573

0.5 GPF
Urinal Retro Kit
Low Consumption

VORTEX RETRO KITS

High Chloramine Resistant Synthetic Diaphragm with Linear Filtered Bypass and Vortex Cleansing Action



#85170 1.6 GPF - Closet

#85171 3.5 GPF - Closet

#85172 2.4 GPF - Closet

#85173 1.5 GPF - Urinal

#85175 1.0 GPF - Urinal

#85176 0.5 GPF - Urinal

HANDS FREE RETRO KITS

Includes 4 AA Batteries

FOR G2, ECOS and SOLIS

#08695

For 0.5 GPF Urinals

#08137

For 1.0 and 1.5 GPF Urinals

#83565

For 1.28 Closets

#08285

For 1.6 and 3.5 GPF Closets

#08710

2.4 GPF



FOR G2 ONLY

#85629

For 0.25 GPF Urinals

FOR SOLIS AND ECOS ONLY



#08850

For .13 GPF or .25 GPF Closets

SLOAN REPAIR PARTS

ANTIMICROBIAL HANDLE ASSEMBLY

#40261391



The TMS Antimicrobial ADA Handle Assembly is a Genuine Sloan replacement for original Sloan valves. It installs easily into existing Flushometer bodies. Manufactured by Sloan, it also replaces units by Zurn and others.

It is factory assembled and pre-lubricated to assure long life and reliable operation. The blue collar identifies this handle assembly has been treated with SANIGUARD.

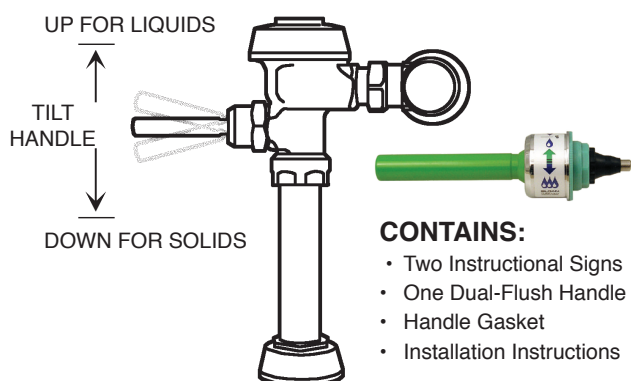
The SANIGUARD Antimicrobial Treatment is a PERMANENT treatment that stops the growth of most bacteria, mold and some viruses.

Unlike disinfectants that dissipate almost instantly, SANIGUARD's patented silver-based technology is actually built into the finish of the parts you touch most and will continue to work for the life of the product.

Give patients, employees, children, customers and yourself a powerful new weapon in the fight against the spread of organisms. The best antimicrobial products on the market, look no further than the TMS products treated with SANIGUARD!

UPPERCUT HANDLE ASSEMBLY

#08880 (WES212A)



Sloan's new Dual-Flush is the first commercial Flushometer to reduce water volume by approximately 30% (on the up flush). The Dual -Flush, green colored handle also easily retrofits to most exiting valves.

- *Lifting handle up initiates reduced flush (1.1 GPF), eliminating liquid and paper waste, saving a 1/2 gallon of water!*
- *Pushing handle down initiates full flush (1.6 GPF), eliminating solid waste and paper.*
- *Antimicrobial coating on handle protects against germs.*
- *Distinctive colored handle signifies water conserving fixture.*

HANDLE ASSEMBLIES & KITS



#08069 (B73A)



For Sloan Royal Flushometers to satisfy A.D.A. requirements. With triple silicone impregnated handle seal.



#08008 (B32A)

For old style Royal and Regal.



#08007 (B50A)

Handle Kit



#08009 (B39)

Handle Seal



#08439 (B51A)

New Style Royal Triple Seal Handle Kit

#08043 (C64A)

Brass Handle Repair Kit

SLOAN MASTER REPAIR KITS IN METAL CASES



#08730

MASTER DUAL FILTER REPAIR KIT

For Sloan Flushometers that use Dual Filtered By-Pass



#08588

OPTIMA PLUS REPAIR PARTS KIT

Master Kit for Battery Operated Flushometers



#08890

G2 MASTER REPAIR KIT

For Battery Operated Flushometers.

MASTER REPAIR PARTS ASSORTMENT

#08066

Includes The Parts You Need Most Often:

- | | |
|--------------------------------|------------------------------|
| 6 Diaphragms | 4 3/4" Gasket Kit |
| 6 Molded Discs | 6 Vacuum Breaker Repair Kit |
| 4 Closet Relief Valve | 2 Repair Kit For Closet Stop |
| 4 Urinal Relief Valve | 2 Repair Kit For Urinal Stop |
| 4 Low Consumption Relief Valve | 2 1-1/2" Spud Washer |
| 3 Guide Assy. | 2 1-1/4" Spud Washer |
| 3 Low Consumption Guides | 2 3/4" Spud Washer |
| 4 1-1/2" Gasket Kit | 6 Handle Repair Kit |
| 4 1-1/4" Gasket Kit | 6 Handle Seal |
| | 12 O-Ring |
| | 6 Locking Ring |
| | 1 Sloan Super Wrench |
| | 1 Metal Box With Dividers |
| | 18" x 12" x 3" |



SLOAN REPAIR PARTS

VACUUM BREAKERS & REPAIR KITS



#08012 (V551A)
Vacuum Breaker
Repair Kit (Standard)



#08438 (V651A)
Vacuum Breaker
Repair Kit (New Style Royal)



V500-AA

#08014 (V500-AA)
1-1/2" x 9" (Common)

#08058 (V500-AA)
1-1/2" x 15"

#08059 (V500-AA)
1-1/2" x 24-1/2"

#08060 (V500-AA)
3-1/16" Long (Less Tailpiece)



V500-AA

#08015 (V500-AA)
1-1/4" x 9" (Common)

#08061 (V500-AA)
1-1/4" x 15"



V500-AA

#08016 (V500-AA)
3/4" x 9" (Common)

#08062 (V500-AA)
3/4" x 15"



V600-AA

New
Style

#08467 (V600-AA)
1-1/2 x 9" New Style Royal
with One Piece Nut

#08466 (V600-AA)
1-1/4" x 9" New Style Royal
with One Piece Nut

#08465 (V600-AA)
3/4" x 9" New Style Royal
with One Piece Nut

C. P. COUPLING ASSEMBLIES FOR ROYAL

#08017 1-1/2"

#08018 1-1/4"

#08019 3/4"



GASKET KITS FOR ROYAL

#08020 1-1/2"

#08021 1-1/4"

#08022 3/4"

C. P. COUPLING ASSEMBLIES FOR REGAL

#08142 1-1/2"

#08143 1-1/4"

#08144 3/4"



GASKET KITS FOR REGAL

#08020 1-1/2"

#08021 1-1/4"

#08022 3/4"

Cast Brass!



SPUD ASSEMBLIES

#08023 1-1/2"

#08024 1-1/4"

#08025 3/4"

#05398 2"

SPUD WASHER

#08026 1-1/2"

#08027 1-1/4"

#08028 3/4"

#08249 2"



FRICTION RINGS

#08101 1-1/2"

#08102 1-1/4"

#08103 3/4"

#08250 2"



SLOAN CONTROL STOP REPAIR KITS

STOP REPAIR KITS

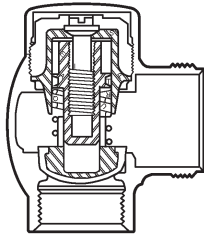
#08033

3/4" - Stop Repair Kit - Old Style



#08032

1" - Stop Repair Kit
Also 3/4" New Style



Wheel handle stop kits available on request.

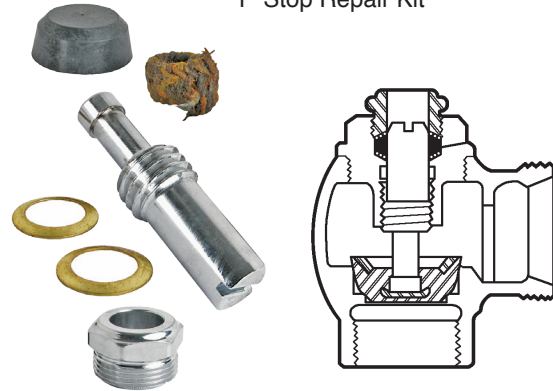
OLD STYLE STOP REPAIR KIT

#08478

3/4" Stop Repair Kit

#08271

1" Stop Repair Kit



Wheel handle stop kits available on request.

OLD STYLE STOP KIT

#08034

3/4" or 1" - Stop Repair Kit

#08718

Stop Repair Kit with Bonnet



Wheel handle stop kits available on request.

WHEEL HANDLE REPAIR PARTS & KITS



#83466

Wheel Handle



#83467

1" RB Bonnet



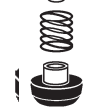
#83468

3/4" RB Bonnet



#08667

1" Wheel Handle Stop
Repair Kit



#08666

3/4" Wheel Handle Stop
Repair Kit

WHEEL HANDLE STOP REPAIR KITS



#08282

Repair Kit for 1"



#08248

Repair Kit for 3/4"

SWEAT SOLDER KIT

#08272

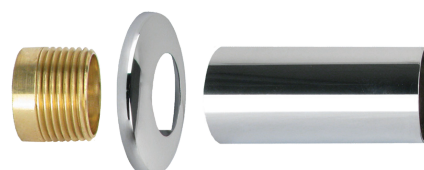
3/4" with 3" tube

#08273

1" with 3" tube

#08791

1" with 6" tube



SLOAN CONTROL STOPS



#08030

3/4" Stop
Adjustable

#08265

3/4" Stop
For Ground Joint

#08460

3/4" Stop Adjustable
with Vandal Resistant Cover



#08029

1" Stop Adjustable

#08264

1" Stop For
Non-Adjustable
Ground Joint

#08464

1" Stop Adjustable
with Vandal Resistant Cover



#08469

3/4" Stop - Regal

#08471

1" Stop - Regal



#08031

1" Stop
Non-Adjustable
Ground Joint



#SP5695

1" Stop
Adjustable Wheel Handle
Rough Brass

ADJUSTABLE TAILPIECES



#08037

"O" Ring

#08038

Locking Ring

#08040

Nut

#08039

Tailpiece 2-1/16"
(Most Common)

#08096

Tailpiece 3-1/16"

#08097

Tailpiece 4-1/16"

#08098

Tailpiece 5-1/16"

#08099

Tailpiece 6-1/16"

TAIL PIECE REMOVING TOOL



*Finally! A Tool to Grab Those
Hard to Remove Tailpieces!*



#08063

1" Diameter

FLOW CONTROL UPGRADE KIT

#85041



All Sloan High-Efficiency Urinal valves now include a flow control component inserted into the tailpiece assembly for more consistent flush delivery.



#08149

Ground Joint Control Stop Nut



#08147

Ground Joint Tailpiece 1-1/4"
For Stop
(Other Lengths Available)

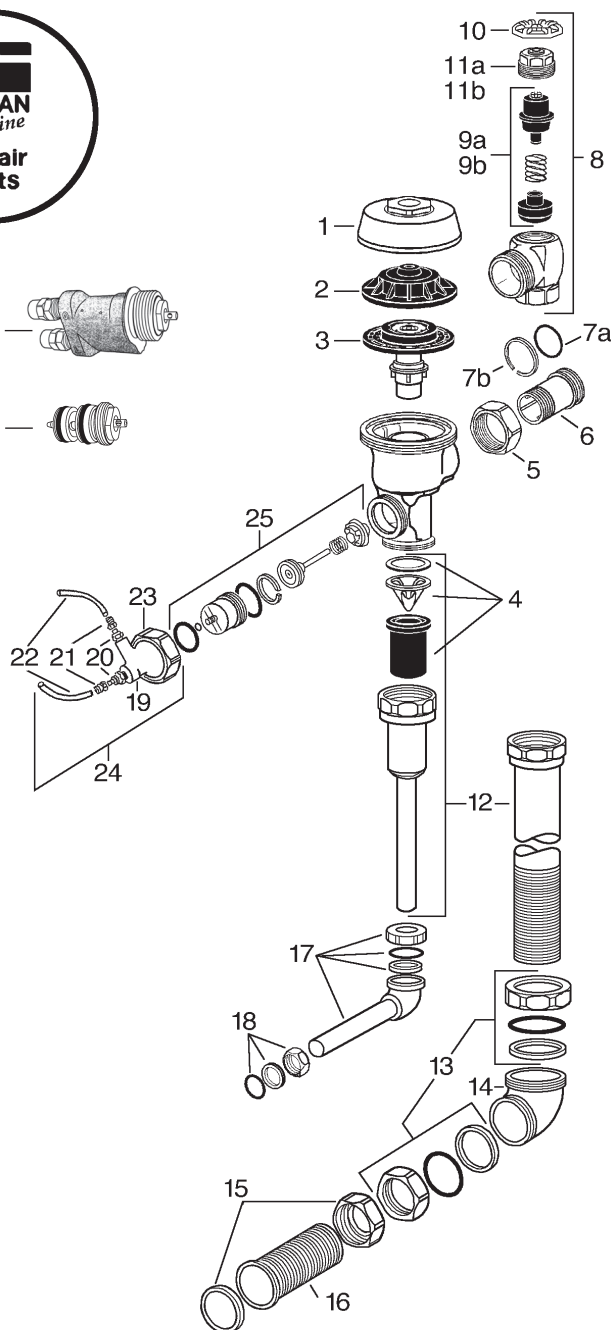
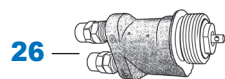
GROUND JOINT CONTROL STOP ADAPTER

#80819



- Retro-fit adjustable tailpiece valves on existing ground joint stops.
- Converts Delany and Old Style Sloan stops
- Upgrade valves
- Saves time and avoids potential behind-the-wall issues

SLOAN HYDRAULIC SERIES 900



1	#08049RB	RB Cover
2	#08050	Inside Cover
3	See Bottom of Page	
4	#08438	Vacuum Breaker Repair Kit
5	#08040	Tailpiece Coupling Nut
6	#08039	Adj. Tailpiece 2-1/16"
7A	#08037	O-Ring
7B	#08038	Locking Ring
8	#SP5695	RB Wheel Handle Bak-Chek® Control Stop
9A	#08282	1" Wheel Handle Stop Repair Kit
9B	#08248	3/4" Wheel Handle Stop Repair Kit
10	#83466	Wheel Handle
11A	#83467	1" RB Bonnet
11B	#83468	3/4" RB Bonnet
12	Must Specify Length	Royal Vacuum Breaker Flush Connection
13	#56124	1/2" RB Couplings, Friction Rings, and Rubber Gaskets
14	#56123	RB Elbow
15	#83469	1-1/2" RB Coupling, Friction Ring, and Rubber Gasket
16	Must Specify Length	RB Flared End Flush Connection
17	Must Specify Length	3/4" RB Elbow Flush Connection with Coupling and Rubber Gasket
18	#SP8788	3/4" RB Coupling, Friction Ring, and Rubber Gasket
19	#08531	RB Valve Actuator Housing only
20	#83470	Tube Fitting
21	#83471	Tube Fitting Nut
22	#08635	1/4" x 48" Connecting Tubes
23	#83472	RB Handle Coupling Nut
24	#08636	Actuator Housing Assembly
25	#08392	Actuator Cartridge Assembly
26	#08395	Actuator Sub-Assembly
27	#08534	Actuator Sub-Assembly Repair Kit

HYDRAULIC REPAIR KITS

Includes:

Retro Kit
Actuator Cartridge
Tailpiece O-Ring
Vacuum Breaker



#83541
Hydraulic Repair Kit
3.5 GPF

#08563
Retro Kit Only
3.5 GPF

#83545
Hydraulic Repair Kit
1.5 GPF

#08562
Retro Kit Only
1.5 GPF

#83542
Hydraulic Repair Kit
2.4 GPF

#08752
Retro Kit Only
2.4 GPF

#83544
Hydraulic Repair Kit
1.0 GPF

#08565
Retro Kit Only
1.0 GPF

#83540
Hydraulic Repair Kit
1.6 GPF

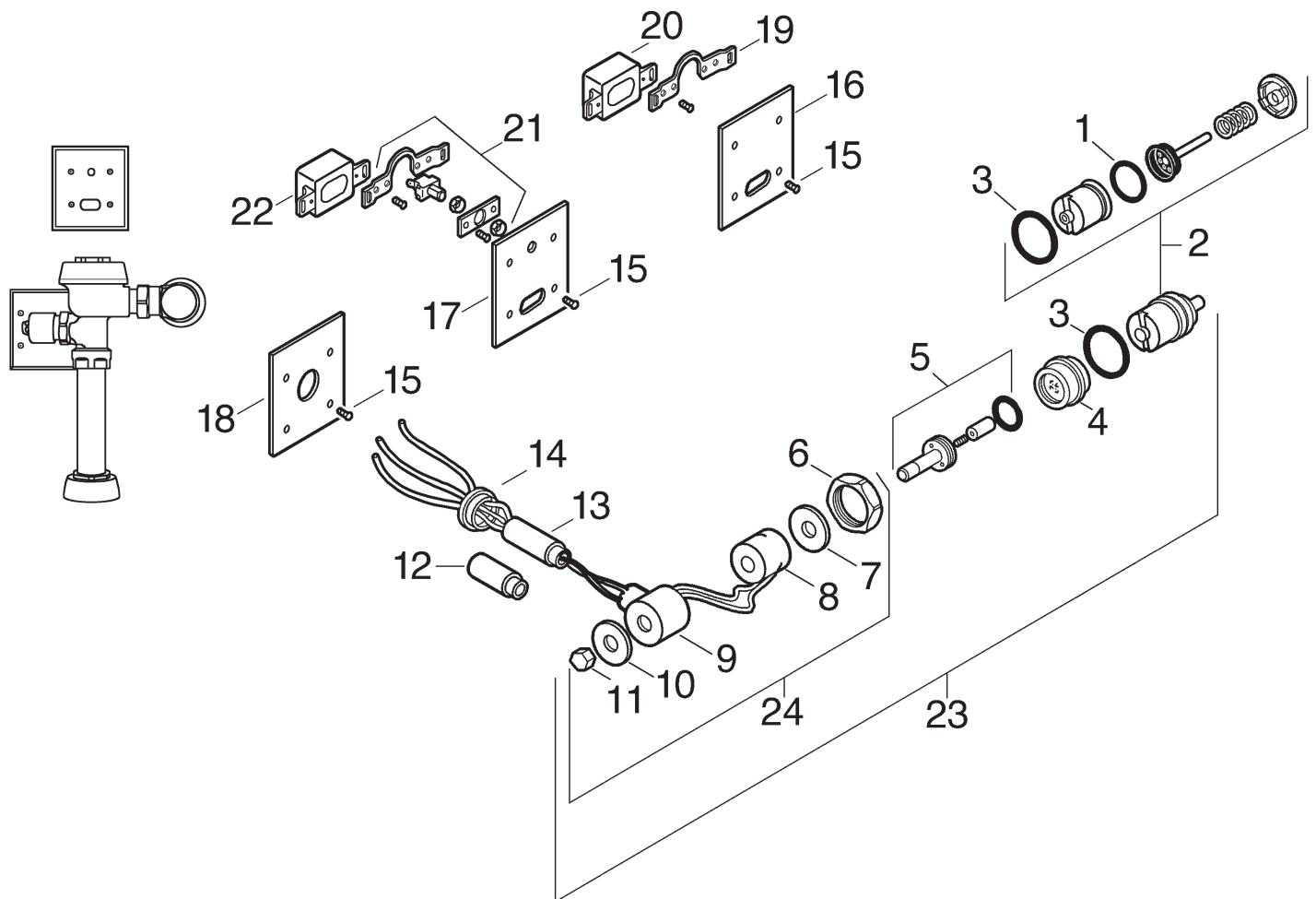
#08564
Retro Kit Only
1.6 GPF

#83543
Hydraulic Repair Kit
0.5 GPF

#08566
Retro Kit Only
0.5 GPF

SLOAN OPTIMA

SLOAN OPTIMA FLUSH VALVE PARTS BREAKDOWN



1	#05160	O-Ring
2	#SP167	Actuator Cartridge Assy. Repair Kit
3	#50045E	O-Ring
4	#56122	CP Adapter for Solenoid
5	#08552	Solenoid Shaft Assy.
6	#08040	CP Handle Coupling
7	<i>See #24</i>	Solenoid Flux Plate
8	#08586	24 VAC Coil
9	<i>See #24</i>	CP Solenoid Housing
10	<i>See #24</i>	Face Plate for 24 VAC Solenoid
11	#08714	CP Nut for Solenoid
12	<i>Call for assistance</i>	CP Extension Nipple Adapter
13	<i>Call for assistance</i>	CP Nipple Assembly
14	<i>Call for assistance</i>	CP Flange Assy. (exposed installation)

15	#08484	CP Screw
16	#08411	CP Cover Plate for Sensor & Solenoid Operator (Urinal only)
17	#08410	CP Cover Plate for Sensor with Override Switch (Closet only)
18	#08761	CP Cover Plate for Solenoid Operator (Closet only)
19	#08481	Yoke Assy. (Urinal only)
20	#08276	Urinal Sensor Replacement Kit.
21	#08482	Override Switch & Yoke Assy. (Closet only)
22	#08450	Closet Sensor Replacement Kit
23	#08275	Complete Solenoid Valve 24V
24	#08735	Exposed Solenoid Valve 24V

SLOAN ELECTRONIC PARTS



#08712 (EBV146AC)
Blue Closet Module
with Solenoid & Base

#08709 (EBV146AU)
Blue Urinal Module
with Solenoid & Base



#08698 (EBV129AU)
Blue Urinal Module
for New Style G2

#08697 (EBV129AC)
Blue Closet Module
for New Style G2



#08701 (EBV142A)
G2 Cover Assembly w/ Override
(Locking Ring Not Included)



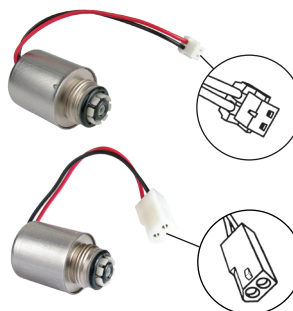
#08715 (EBV130A)
Button Cover Assembly
For G2 (Override)



#08720 *shown* (EBV145A)
Optima Plus G2
New Style
Base with Solenoid

CAUTION:
NOT Interchangeable

#08398 (EBV21A)
Optima Plus
Old Style
Base with Solenoid



#08721 (EBV136A)
Replacement
Solenoid Only
for New Style G2

#SP5825 (EBV144A)
Replacement
Solenoid Only
Old Style

OLD STYLE CONTROL MODULE

Uses Four "C" Batteries



#54325
(EBF60A)
Control Module
Assembly With
Solenoid Body

#54335
(EBF1011A)
For Replacement
Solenoid Only



OPTIMA VALVE MODULE
(EBF-11A)

#54003
For Battery Powered EBF85 Series

NEW STYLE CONTROL MODULE

Since July '08

Old and new style are **NOT** interchangeable



#81784
(ETF740A)
Solenoid
For Optima



#81785
(ETF735A)
Control Module
USES FOUR
"AA" BATTERIES
#32737

ALL PARTS ABOVE FOR EBF650 AND EBF615

OPTIMA HANDS FREE RETRO KIT (G2)



#83565 (EBV1024A)
For 1.28 Closets

#08285 (EBV1024A)
For 1.6 and 3.5 GPF Closets

#08710 (EBV1021A)
For 2.4 GPF Closets

#85629 (EBV1025A)
For 0.25 GPF Urinals

#08695 (EBV1023A)
For 0.5 GPF Urinals

#08137 (EBV1022A)
For 1.0 and 1.5 GPF Urinals



INCLUDES
4 AA BATTERIES

ELECTRONIC FILTER KIT



#08578 (ETF1004A)

PROGRAMMED WATER TECHNOLOGIES



MICROPlumb PROGRAMMED WATER TECHNOLOGIES PRODUCTS FROM SLOAN VALVE

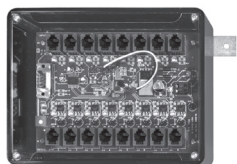
Retrofit your existing air valve systems, and provide your facility with dramatic savings in key areas:

- Reduced water usage
- Lower sewage cost
- Less energy needed to heat water
- Reduced maintenance

Programmed Water Technologies is a Sloan Valve Company. PWT builds upon Sloan's outstanding reputation by offering the latest advancements in microprocessor control. As a pioneer in electronics and plumbing, Sloan offers the products and service needed to achieve plumbing design objectives.

Programmed Water Technologies offers a complete line of programmable products and systems designed to give you maximum control of your plumbing fixtures. PWT MICROPlumb® Products incorporate advanced microprocessor technology and are designed with few moving parts and no mechanical metering devices – a combination that ensures responsive, reliable plumbing control and substantial water savings. MICROPlumb Products feature vandal resistant components, ensuring ongoing operation. RJ-11 modular Quick-Release™ connections reduce installation time and offer flexibility in adapting to changes. No need for a whole-building system – MICROPlumb Systems are stand-alone, independent of other Building Automation Systems (BAS). All PWT MICROPlumb Products and Systems are developed and supported by Sloan Valve, a company with more than 100 years of experience in the design, engineering and manufacturing of plumbing products.

8 I/O CONTROLLER



#87841

An eight input/output "Stand Alone" Controller used with MICROPlumb™ push buttons, electronic flushometers and solenoids to control water closets, lavatories and showers.

SOLENOID OPERATOR RETROFIT KIT



#88943

24 VAC solenoid operator kit used to convert hydraulic flushometers into electronic flushometers for use with MICROPlumb™ Controllers. Can also be used as repair part for existing MICROPlumb™ flushometers.

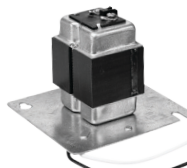
PUSH BUTTON



#88828

Waterproof push button for use with any MICROPlumb™ controller. Mounts on fixture back splashes, wall box covers or wall up to 1" thick. Activates water closets, lavatories and showers.

SLOAN OPTIMA SYSTEMS TRANSFORMERS



#08390

Sloan offers a wide range of 24 VAC step down Transformers for use with Sloan OPTIMA® Flushometers and Faucets. All Sloan Transformers are Class II, UL Listed.

SOLENOID RETROFIT KIT



#88942

24 VAC retrofit solenoid kit. Converts Acorn, Bradley, Metcraft and Willoughby air valve manifolds from pneumatic operation to electronic operation. Used in conjunction with MICROPlumb™ controllers to provide control over lavatory and shower water usage.

RETROFIT FLUSHOMETER ASSEMBLY



Concealed electronic operated water closet flushometer, for retrofit of manual, handle operated flushometer.

#88829

For 1.6 GPF

Other gallon rates available.



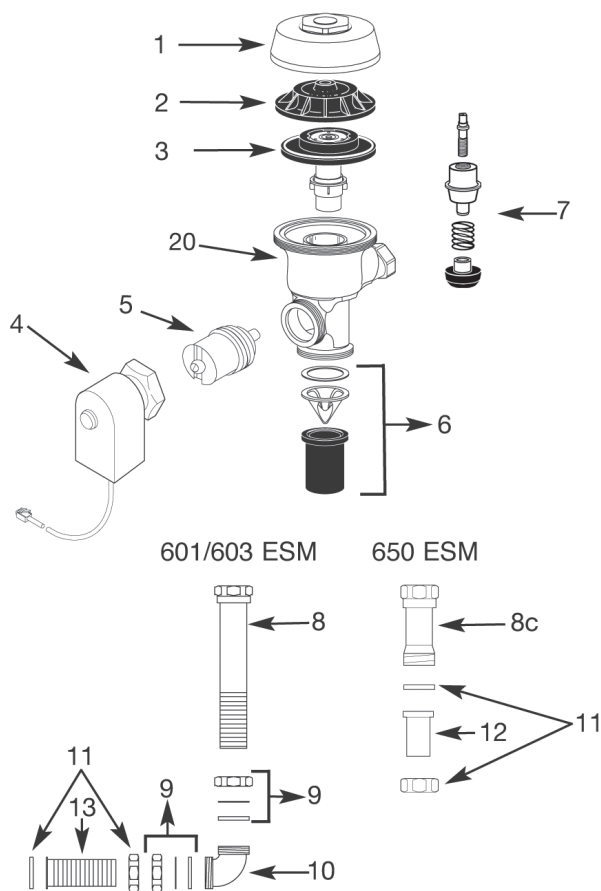
SEC0615



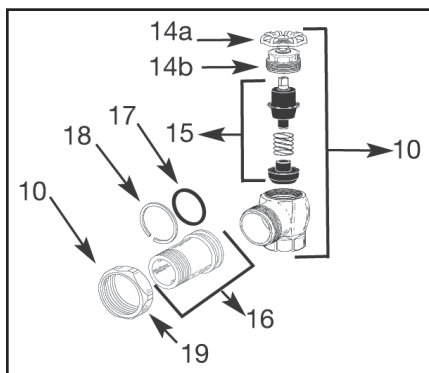
PROGRAMMED WATER TECHNOLOGIES



601/603/650-ESM Maintenance Guide



Control Stop and Tailpiece



Many PWT MicroPlumb® optional push button controllers and extension cord kits are available in different lengths. Contact our Customer Service for information and code numbers, or for any other questions about installation, maintenance, or troubleshooting issues. 800-442-6622.

1.	#88758	A-72-LC	Rough Brass Outside Cover
2.	#08050	A-71	Plastic Inside Cover
3.	‡		Dual Filtered Diaphragm Assembly
4.	#87075	MCR-1001	24 VAC Solenoid Assembly w/Modular Plug
5.	#SP167	EL-128-A	Actuator Cartridge Assembly (Includes Spring, Plunger Guide, Solenoid Valve Seat, Valve Piston Assembly, and O-Ring)
6.	#08438	V-651-A	Vacuum Breaker Repair Kit
7a.	#08667	H-1006-A	1" Wheel Handle Stop Repair Kit
7b.	#08666	H-1007-A	3/4" Wheel Handle Stop Repair Kit
8a.	#08759	V-500-AA	603 Vacuum Breaker Assembly (1 1/2" x 17 1/2" w 3" Score)
8b.	#82226	V-500-AA	601 Vacuum Breaker (1 1/2" x 13 1/2" w/ 10 1/2" Score)
8c.	#88759	V-500-AA	650 Vacuum Breaker (1 1/2" x 3")
9.	#56124	F-2-AA	1 1/2" Coupling Slip Joint (Quantity 2)
10.	#56123	F-21	1 1/2" Double Slip Elbow
11.	#82761	F-2-A	1 1/2" Coupling w/ S-21 Gasket
12.	#88760	F-22 650	Outlet Tube 1 1/2" x 2"
13.	#88762	F-100	603-ESM-1.6 Outlet Tube 3 1/4" w/ 3" Score
	#88763	F-100	603 CH ESM Outlet Tube 9 1/2" w/ 3" Score
14a.	#88761	H-1011-A	Repair Kit (for Concealed WH only; does not include bonnet)
14b.	#83467	H-623	Bonnet
15.	#08667	H-1006-A	Repair Kit for 1" (25 mm) Stops with Concealed WH for use with 1" (25 mm) H-700, H-600, and H-540 WH Series Stops
16.	#08039	H-551-A	Rough Brass Adjustable Tailpiece (2-1/16"/52 mm long)
17.	#08037	H-553	O-Ring
18.	#08038	H-552	Locking Ring
19.	0308694	H-550	Rough Brass Adjustable Coupling
20.	‡ ‡		Valve Body Assembly Code & part number varies with model. Call for assistance.

Parts shown service all Sloan diaphragm-type Flushometers manufactured after 1964, including Low Consumption (LC) models.
‡ Code and Part No. varies on flush volumes. See the chart on page 30.



PROGRAMMED WATER TECHNOLOGIES



The following information pertains to troubleshooting the PWT System Components. Please refer to the following PWT Software Guide for troubleshooting any software or communication problems. Be advised that all PWT Communicating Controls are designed to work independently from the Computer System. Should the computer, any passive coupler or router fail, there will be no effect on the performance of any cell. The only effect will be to the communication from the computer to the individual control.

1 PROBLEM: Flushometer Does Not Function, but Associated Input and Output LEDs illuminate

- CAUSE:**
- A) Control stop or main valve is closed.
 - B) EL-128-A Valve Actuator Cartridge worn.
 - C) Relief Valve on A-41-A Diaphragm Assembly is worn.
 - D) Solenoid coil burned out.

- SOLUTION:**
- A) Open control stop and/or main valve.
 - B) Replace EL-128-A Valve Actuator Cartridge.
 - C) Replace entire A-41-A Diaphragm Kit.
 - D) Replace EL-297-A Solenoid.

2 PROBLEM: Flushometer Runs Continuously

- CAUSE:**
- A) Diaphragm bypass hole clogged.
 - B) Spring inside EL-128-A Valve Actuator Assembly is worn or broken.
 - C) Relief Valve on Diaphragm Kit not seating properly.

- SOLUTION:**
- A) If clogged, remove debris by blowing into bypass hole and/or wash under running water.
 - B) Replace EL-128-A Valve Actuator Assembly.
 - C) Look for debris on Diaphragm Relief Valve seat. Clean or replace as necessary.

3 PROBLEM: Flushometer Does Not Function. Associated Input LED does not illuminate

- CAUSE:**
- A) Push-button spring worn.
 - B) Reed Switch on push-button assembly worn.

- SOLUTION:**
- A) Replace push-button spring.
 - B) Replace MCR-18 Reed Switch.

4 PROBLEM: Flushometer Does Not Function. Input LED illuminates, but output LED does not illuminate

- CAUSE:**
- A) Control Board problem

- SOLUTION:**
- A) Replace Controller

5 PROBLEM: Flushometer Does Not Function. No LEDs illuminate.

- CAUSE:**
- A) No power to control board.
 - B) F1 fuse on control board blown.

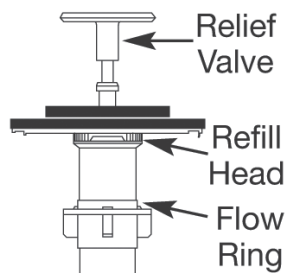
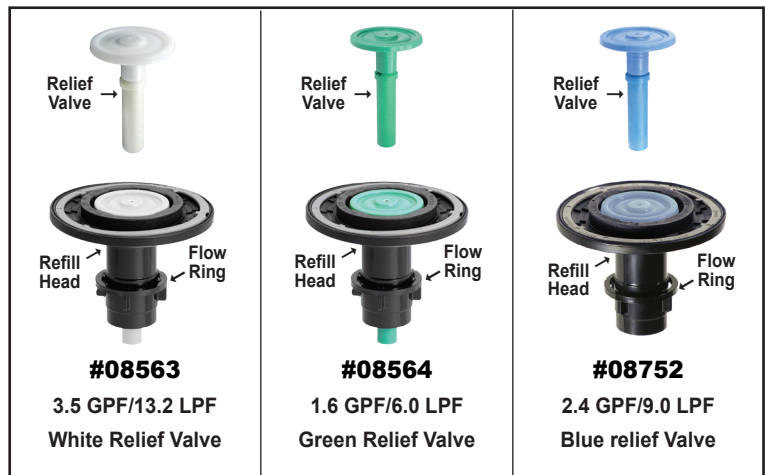
- SOLUTION:**
- A) Press service pin on control board. If power indicator LED illuminates, you have power coming into board. If LED does not illuminate, check 24VAC from transformer. Replace transformer if necessary. If power is coming from transformer, turn off power to the control board and check fuse F1. Replace F1 as necessary.
 - B) Turn off power to the control board and replace F1 fuse.

6 PROBLEM: Length of Flush is Too Long, or Valve Fails to Shut Off

- CAUSE:**
- A) Water Saver valve is installed on Low Consumption fixture
 - B) Relief valve in diaphragm is not seated properly or bypass hole in diaphragm is clogged.

- SOLUTION:**
- A) Replace Diaphragm component parts of valve with kit that corresponds to appropriate flush volume of fixture.
 - B) Disassemble inside Diaphragm component parts and wash parts thoroughly. Replace worn parts if necessary.

Diaphragm Assemblies



To identify the flush volume of a dual filtered diaphragm assembly, look at the color of the relief valve, refill head and the shape of the flow ring. **NOTE:** In January 1998, the Royal Diaphragm design was upgraded to a preassembled unit with two (2) plastic filtering rings attached to the rubber diaphragm (one on top and one on bottom). If the Flushometer you are servicing has our older, segmented diaphragm with brass bypass hole, please call for assistance.

DELANY REPAIR PARTS

CLOSET HANDLE ASSEMBLY



#08173

HANDLE GRIP



#08163

HANDLE NUT FOR CLOSET VALVE



#08164

OPERATING STEM - COMMON

#08165 1-7/8" Length



OPERATING STEM - UNCOMMON

#08374 1-13/16" Length



HANDLE FLEXER



#08166

HANDLE PACKING WASHER



#08254

3.5 GPF DIAPHRAGM ASSEMBLY WITH SEAT



#08344

DIAPHRAGM KIT FOR CLOSET



#08177 4.5 Closet
#08895 3.5 Closet
#08897 1.6 Closet
#08178 1.5 Urinal
#08479 1.0 Urinal
#50784 1.5 Urinal
 Leather diaphragm
 Not OEM
#50783 3.5 Closet
 Leather diaphragm
 Not OEM

AUXILIARY VALVE



#08600

AUXILIARY VALVE SEAT HOLDER



#08158

SEAT GUIDE FOR CLOSET VALVE



#08160

COVER PACKING FOR CLOSET VALVE



#08154

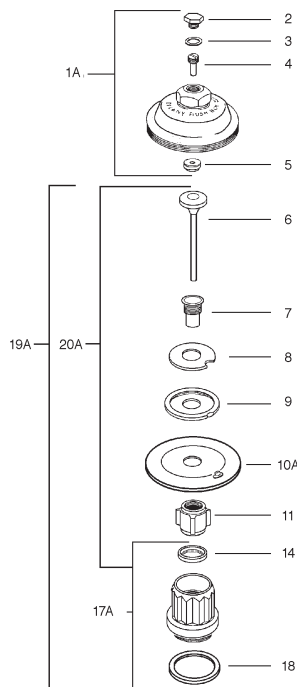
VACUUM BREAKER



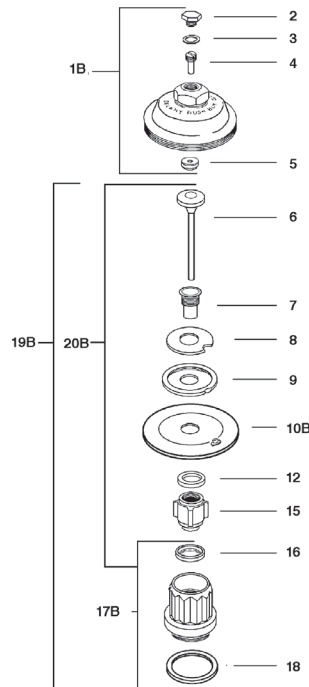
#08227 1-1/2" x 9"
#08228 1-1/4" x 9"
#08229 3/4" x 9"

DELANY FLUSHBOY

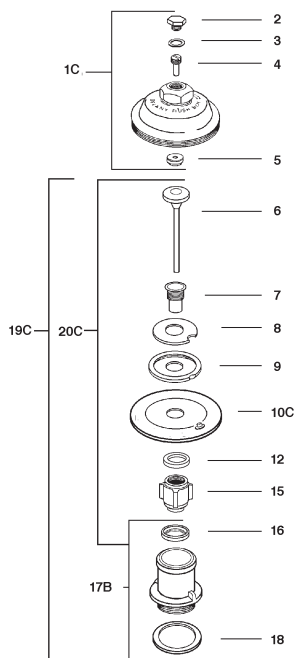
4.5 GPF W/ 1" SUPPLY



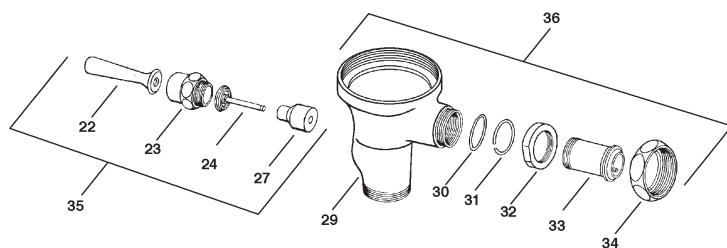
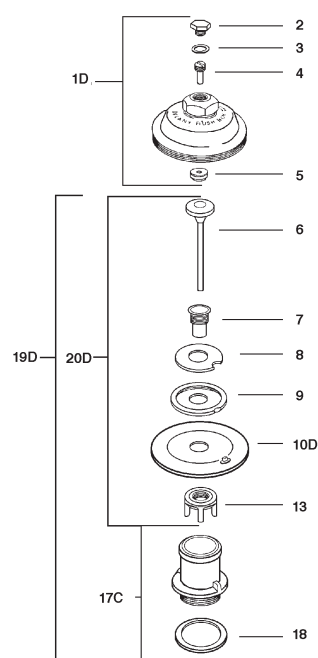
3.5 GPF W/ 1" SUPPLY



1.6 GPF W/ 1" SUPPLY

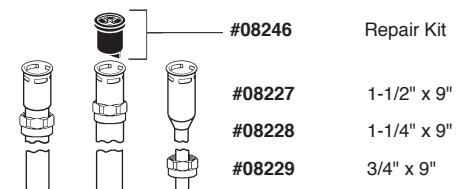


1.0 GPF W/ 3/4" SUPPLY



1A	#08175	Cover Assembly
1B	#08892	Cover Assembly
1C	#08894	Cover Assembly
1D	#08896	Cover Assembly
2	#08150	Cover Screw
3	#08151	Washer For Cover Screw (Omitted In Later Production)
4	#08152	Regulation Screw
5	#08154	Packing For Cover
6	#08155	Auxiliary Valve Seat
7	#08156	Diaphragm Bushing
8	#08157	Auxiliary Valve Seat
9	#08158	Auxiliary Valve Seat Holder
10A	#08177	Closet Diaphragm w/ Auxiliary Valve Seat 4.5 GPF
10B	#08895	Closet Diaphragm w/ Auxiliary Valve Seat 3.5 GPF
10C	#08897	Closet Diaphragm w/ Auxiliary Valve Seat 1.6 GPF
10D	#08178	Urinal Diaphragm w/ Auxiliary Valve Seat 1.5 GPF
11	#08160	Seat Guide
12	#08793	Refill Ring
13	#08181	Seat Guide
14	#08161	Choke Ring 4.5 Gpf Valve
15	#08160	Seat Guide
16	#08168	Choke Ring For Main Valve Seat
17A	#08176	Main Valve Seat
17B	#08180	Main Valve Seat
17C	#08893	Main Valve Seat
18	#08162	Main Valve Seat Washer
19A	#08472	Diaphragm Operating Assy 4.5 GPF
19B	#08344	Diaphragm Operating Assy 3.5 GPF
19C	#08743	Diaphragm Operating Assy 1.6 GPF
19D	#08713	Diaphragm Operating Assy 1.0 GPF
20A	#08656	Diaphragm Operating Assembly (Less Seat) 4.5 GPF
20B	#08848	Diaphragm Operating Assembly (Less Seat) 3.5 GPF
20C	#08690	Diaphragm Operating Assembly (Less Seat) 1.6 GPF
20D	#08847	Diaphragm Operating Assembly (Less Seat) 1.0 GPF
21	#08600	Auxiliary Valve (For Non Hold Open)
22	#08163	Handle
23	#08164	Handle Nut
24	#08165	Operating Stem (For Non Hold Open, Use W/ Item 21)
27	#08166	Flexer
29	#08167	Kwikfit Valve Body
30	#08168	O-ring
31	#08169	Clamping Ring
32	#08170	Clamping Nut
33	#08171	Kwikfit Union Tailpiece
34	#08172	Union Nut
35	#08173	Handle Assembly
36	#08174	Kwikfit Valve Body Assembly

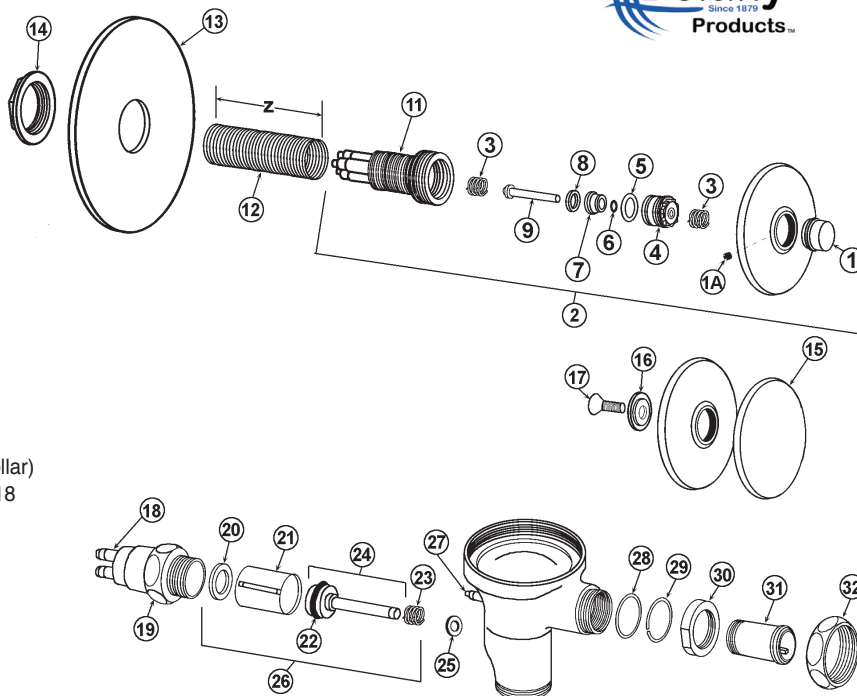
DELANY VACUUM BREAKERS



DELANY

DELANY HYDRO-FLUSH RENEWAL PARTS

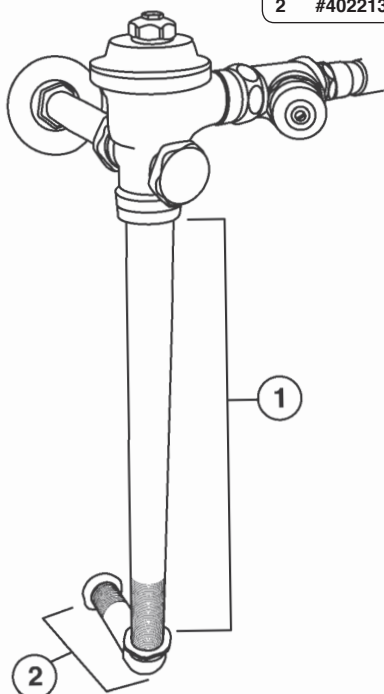
ITEM	PART #	DESCRIPTION
1	#40221317	1/2" Push button
1A	#40221311	Set screw
2	#40221260	Actuator assembly (1/2" button)
3	#40221269	Spring for push button
4	#40221318	Spindle guide
5	#40221271	O-ring for spindle guide
6	#40221270	Spindle O-ring
7	#40221272	O-ring holder
8	#40221274	Spindle seat washer
9	#40221319	Spindle
1-14	#40221262	Internal actuator assembly
11	#40221273	Actuator body
12	#40221320	Wall sleeve (specify "z" length)
13	#40221321	Bearing plate
14	#40221322	Locknut
15	#40221323	3" Oscillating disc
16	#40221324	Retainer for disc
17	#40221268	Holding screw for disc
18	#40221325	Straight release fitting (w/ black collar)
19	#40221326	Piston valve body w/ 2 each item 18
20	#40221327	Piston bore washer
21	#40221152	Piston sleeve
22	#40221328	Cup washer
23	#40221154	Spring for piston operating stem
24	#40221180	Piston operating stem assembly
25	#40221329	Handle pad washer
26	#40221330	Piston valve assembly
27	#40221276	Straight release fitting w/ red collar



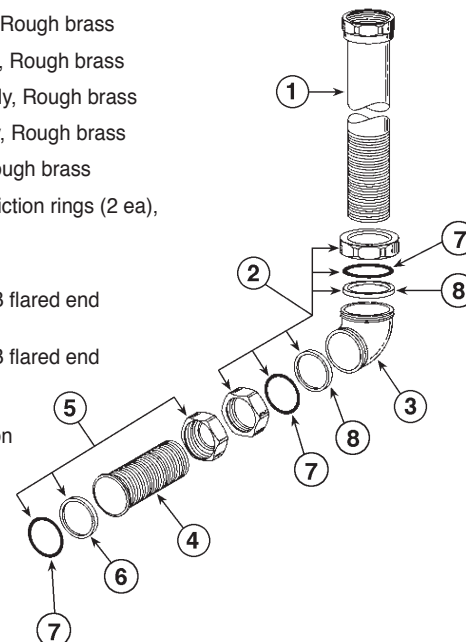
Delany
Since 1879
Products™

DELANY CONCEALED VACUUM BREAKER PARTS

- | | | |
|---|-----------|---|
| 1 | #40221351 | 1-1/2" x 15" Rough brass tailpiece – unscored |
| 2 | #40221352 | 1-1/2" x 8" Rough brass elbow and wall extension – scored |



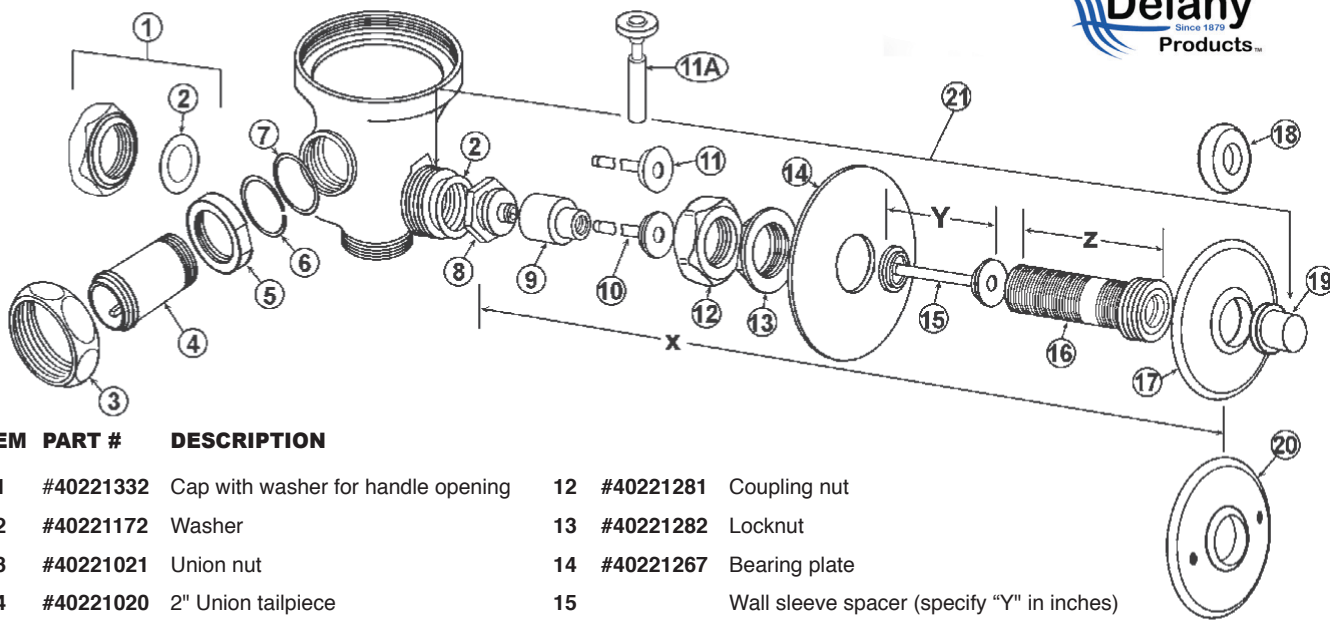
- | | | |
|---|-----------|--|
| 1 | #40261291 | 1-1/2" x 7-1/2" VB Assembly, Rough brass |
| | #40261292 | 1-1/2" x 11-1/2" VB Assembly, Rough brass |
| | #40261293 | 1-1/2" x 13-1/2" VB Assembly, Rough brass |
| | #40261294 | 1-1/2" x 17-1/2" VB Assembly, Rough brass |
| | #40261295 | 1-1/2" x 22" VB Assembly, Rough brass |
| 2 | #40261008 | 1-1/2" RB couplings (2 ea), friction rings (2 ea), and rubber gaskets (2 ea) |
| 3 | #40261299 | 1-1/2" Double male SJ elbow |
| 4 | #40261296 | 1-1/2" x 3-1/4" w/ 3" score RB flared end flush connection |
| | #40261297 | 1-1/2" x 9-1/2" w/ 9" score RB flared end flush connection |
| | #40261298 | 1-1/2" x 15" w/ 13-1/2" score RB flared end flush connection |
| 5 | #40261010 | 1-1/2" RB coupling and rubber gasket |
| 6 | #40211324 | Tailpiece washer |
| | #40950135 | Drip proof vinyl washer |
| 7 | #40700430 | Friction washer |
| 8 | #40950008 | SJ washer |



Delany
Since 1879
Products™

DELANY HANDLE PARTS

CONCEALED VALVE HANDLE PARTS

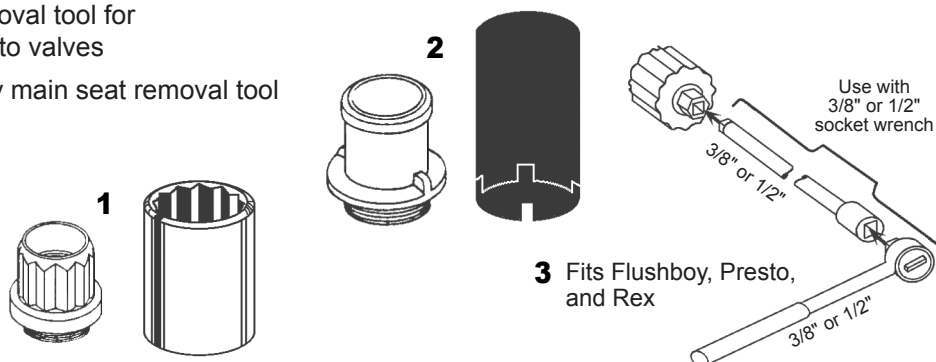


ITEM	PART #	DESCRIPTION	ITEM	PART #	DESCRIPTION
1	#40221332	Cap with washer for handle opening	12	#40221281	Coupling nut
2	#40221172	Washer	13	#40221282	Locknut
3	#40221021	Union nut	14	#40221267	Bearing plate
4	#40221020	2" Union tailpiece	15		Wall sleeve spacer (specify "Y" in inches)
5	#40221019	Clamping nut	16		Wall sleeve (specify "Z" in inches)
6	#40221018	Clamping ring			Wall sleeve (for use w/ 1/2" push button – specify "Z")
7	#40950069	O-ring	17	#92157	Wall flange (for use w/ disc handle or foot pedal)
8	#40221280	Wall sleeve bushing		#40221283	Wall flange (for use with 1/2" button only)
9	#40221089	Flexer	18	#92158	Sink flange (for use w/ 1/2" button only)
10	#40221101	Operating stem 3-1/32" long	19	#40221284	1/2" push button use w/ concealed valves only
11	#40221086	Operating stem 2-29/32" long	20	#92159	Wall flange (use w/ access panel)
11A	#40221080	Auxiliary valve – non hold open (use with item 11)	21		Handle assembly – specify 1/2" push button, 3" oscillating disc, pedal assembly or regular handle assembly Specify CTF*

DELANY FLUSH VALVE TOOLS

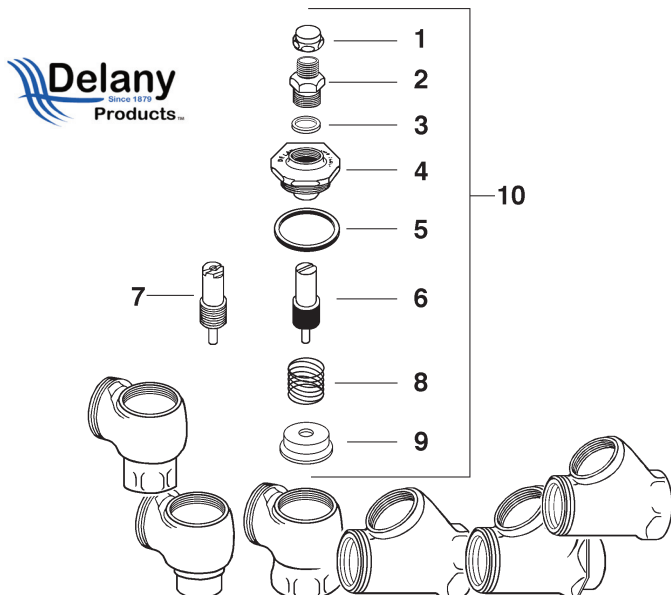


ITEM	PART#	DESCRIPTION
1	#20200153	Delany seat removal tool for Flushboy
2	#40221331	Delany seat removal tool for Flushboy & Presto valves
3	#20200165	Easy Out Delany main seat removal tool



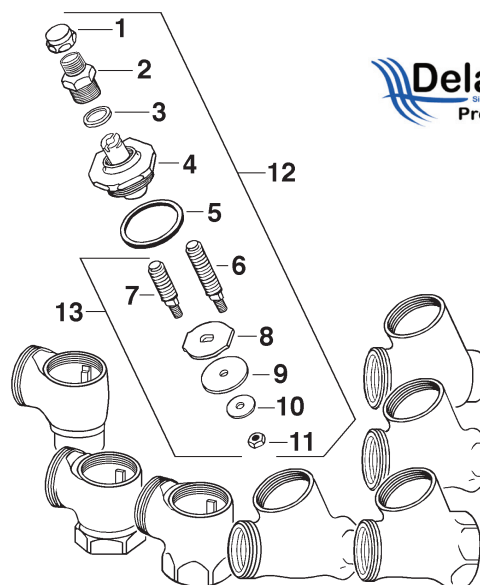
DELANY REPAIR PARTS

TURN TO SILENCE ANGLE OR STRAIGHT STOPS - 3/4", 1"



1 #08133 Protecting Cap	6 #08186 Shut Off Stem
2 #08192 Packing Nut	7 #08187 Shut Off Stem for Wheel Handle Stops
3 #08183 Packing for shut of stem	8 #08188 Back Check Spring
4 #08184 Bonnet	9 #08189 Disc with Metal Insert
5 #08185 Bonnet Washer	10 #08190 Complete Bonnet Assy.

REGULAR ANGLE OR STRAIGHT STOPS - 3/4", 1", 1-1/4"



1 #08133 Protecting Cap	7 #08197 Male Shut-Off Stem with 1-1/2" Overall Length
2 #08192 Packing Nut	8 #08198 Guide
3 #08183 Packing for Shut-off Stem	9 #08199 Seat Washer
4 #08194 Bonnet w/Female Shut-Off Stem	10 #08200 Washer for Shut-off Stem Nut
5 #08185 Bonnet Washer	11 #08201 Nut for Shut-Off Stem
6 #08196 Male Shut-Off Stem with 1-1/4" Overall Length	12 #08213 Complete Bonnet Assy.
	13 #08891 Male Shut-Off Stem Assy.

DELANY COMPLETE CONTROL STOPS



**Screwdriver
Operated**

**Wheel Handle
Operated**

- #40221093 3/4" Angle Stop
#40221094 1" Angle Stop
#40221356 1" Wheel Handle Angle Stop

ROYAL RETROFIT FOR GROUND JOINT CONNECTIONS



Adjustable Length
Ground Joint Tailpiece

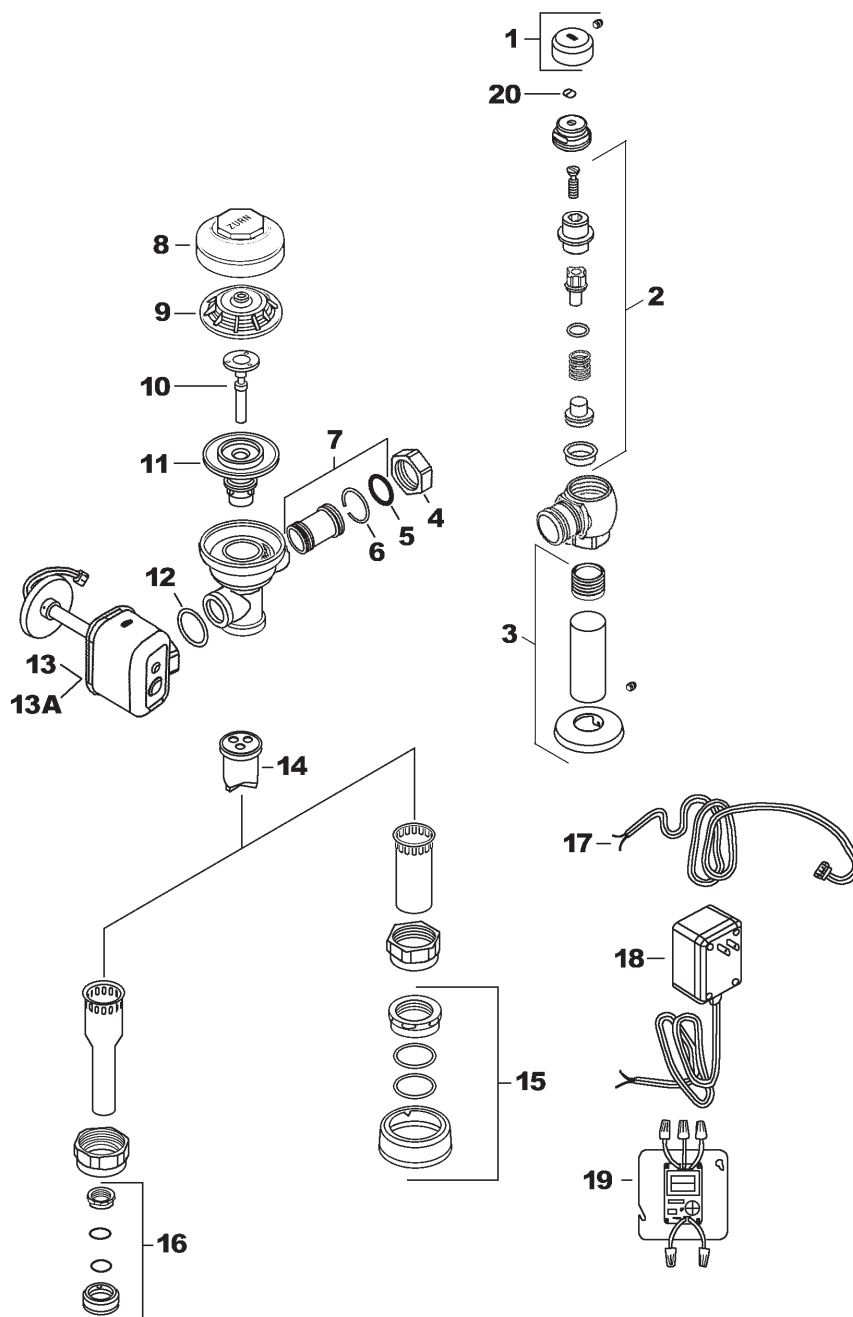
#08112
Royal Closet Valve
Sub Assembly

#08104
Royal Urinal Valve
Sub Assembly

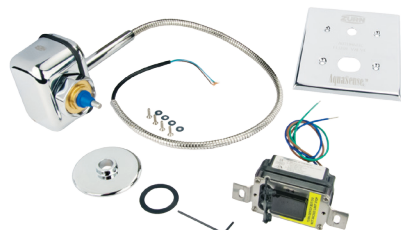
Designed to replace **Coyne & Delany** and **Watrous** valves without having to replace the supply stop and vacuum breaker flush connection.

- Adjustable ground joint tailpiece.
- Supply stop and vacuum breaker are not supplied.

ZURN AQUAVANTAGE ZEMS



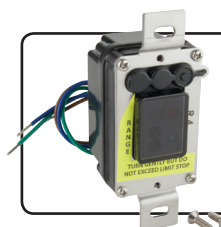
1	#08849	Vandal Resistant Cap
2	#08625	Control Stop Repair Kit
3	#81094	Sweat Solder Kit
4	#08526	Locking Nut
5	#08525	Tailpiece O-Ring
6	#08524	Snap Ring
7	#08620	2-1/16" Adj. Tailpiece
8	#08337	Cp Valve Body Cover
9	#08342	Inside Plastic Cover
10	#08341 #08507	Closet Trip Mechanism Urinal Trip Mechanism
Aquavantage Zems Retro Kits		
	#08508	Closet 4.5 Gpf
	#08583	Closet 3.5 Gpf
11	#08567	Closet 1.6 Gpf
	#08522	Urinal 3.0 Gpf
	#08584	Urinal 1.5 Gpf
	#08599	Urinal 1.0 Gpf
12	#08515	Gasket
13	#58373	Actuator Assembly
13A	#81130	Concealed Actuator Assembly
14	#08300	VB Repair Kit
15	#08529	1-1/2" Coupling Assy.
16	#08621	3/4" Coupling Assy.
17	#81095	Power Cord
18	#81096	Power Converter Plug-In
19	#56722	Power Converter Wired
20	#08302	Stop Cap



#81130
(PEMS6000-HYM)
ACTUATOR ASSEMBLY
FOR ZEMS VALVES - CONCEALED

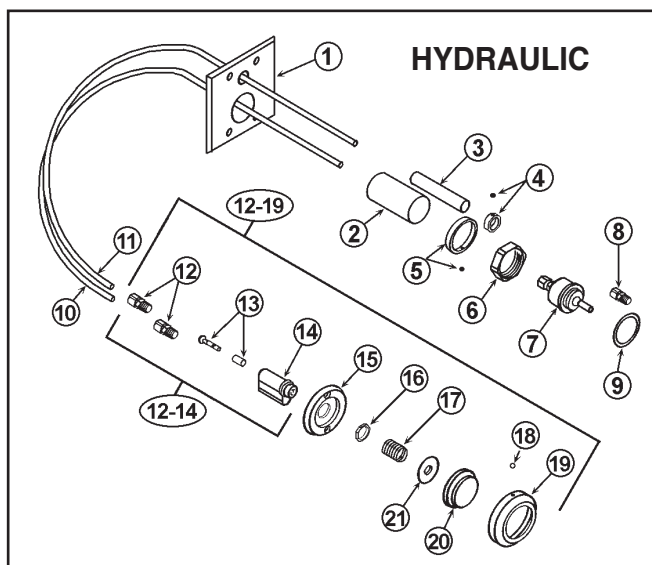


#58373
(PEMS6000-HYM-IS)
ACTUATOR ASSEMBLY
FOR ZEMS VALVES - EXPOSED



#81075
(PEMS6000-26)
SENSOR FOR CLOSET
OR URINAL ZEMS

ZURN AQUAVANTAGE



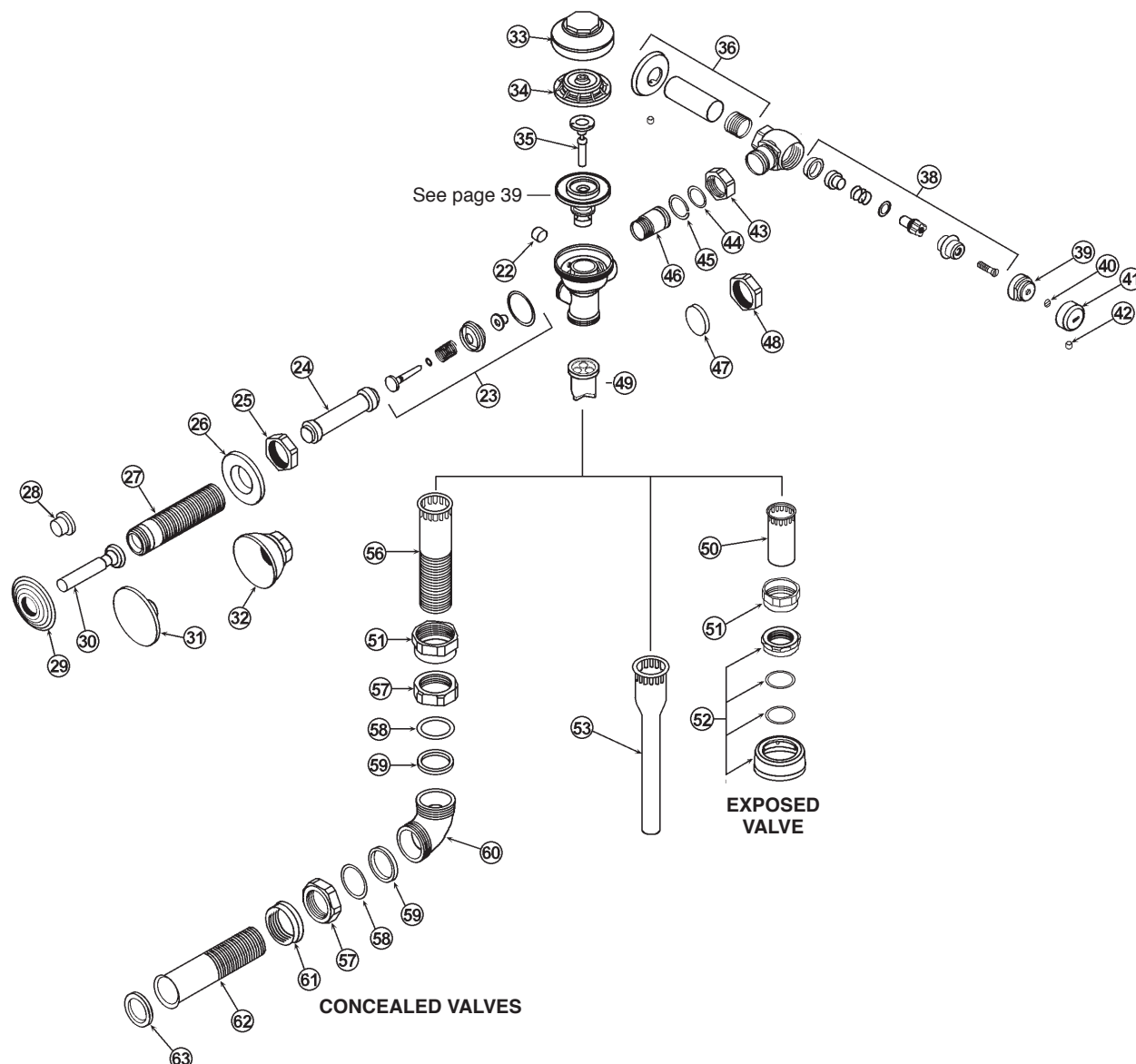
#57361
Repair Kit



#58781
Actuator Assembly - Fixture Wall



#08317
Actuator Cylinder Assembly



ZURN AQUAVANTAGE

ITEM	PART #	DESCRIPTION	ITEM	PART #	DESCRIPTION
1		Chrome cover plate	34	#08342	Plastic cover
2	Items 2-7 #08317 Actuator Cylinder Assembly	Return cover tube	35	#08341	Trip mechanism – white
3		Supply cover tube		#08507	Trip mechanism – black
4		Cover tube ring w/ setscrew	36	#40268788	3/4" Sweat adapter kit
5		Cover tube ring w/ setscrew		#40268782	1" Sweat adapter kit
6	#08628	Handle nut	37	N/A	Stop body
7	#82819	Hydraulic plunger assembly	38	#08625	Stop repair kit 3/4" & 1"
8	#81405	1/16" Compression fitting	39	#08536	Stop cap
9	#08859	Gasket	40	#40296003	Snap cap screw cover
10	#08861	1/4" Return tube - clear	41	#40291019	Vandal-resistant control stop cover
11	#08862	1/4" Supply tube - black	42	#40291020	Set screw for control stop cover
12	#85201	1/8" Compression fitting	43	#40268676	Locking nut
13	#40291001	Repair kit for hydraulic actuator	44	#08037	Tailpiece o-ring
14	N/A	Actuator body	45	#08038	Snap ring
12-14	#58781	Hydraulic actuator assy. – fixture wall	46	#08620	Tailpiece – 2-1/16"
	#57361	Hydraulic actuator assy. – side wall	47		Solid gasket
15		Mounting plate	48		Solid handle nut
16	#40291004	Securing nut	49	#08300	Vacuum breaker repair kit
17	#81403	Spring for large push button	50		Vacuum breaker tube (<i>specify length</i>)
	#81404	Spring for small push button	51	#08529	Vacuum breaker tube nut
18		Escutcheon setscrew	52	#08622	1-1/2" Spud coupling assembly
19		Escutcheon for large push button		#08621	1-1/4" Spud coupling assembly
12-19	#40291007	Hydraulic metal PB – penal use		#40266125	3/4" Spud coupling assembly
	#40291008	Hydraulic large PB – side wall	53		Vacuum breaker tube (<i>specify length</i>)
	#40291022	Hydraulic metal PB assy.	54		3/4" 90° Elbow
20	#40291009	Large push button	55		3/4" Horizontal tube
	#40291010	Small push button	56		Vacuum breaker tube (<i>specify length</i>)
21		Spacer for large push button	57	#40800033	Coupling nut
22	#81999	Filter	58	#40261009	Spud friction washer
23	#08299	Handle repair kit	59	#40950008	Spud friction gasket
24		Push rod/filler rod (<i>specify length</i>)	60		90° Elbow
25	#08054	Handle nut	61		Spud nut
26		Adjusting nut	62		Flanged/scored horizontal tube (<i>specify length</i>)
27		Sleeve/socket (<i>specify length</i>)	63	#40211324	Flat gasket
28	#40291014	Optional 1" metal push button		#40950135	Drip proof vinyl washer
29	#40291015	Wall escutcheon	64		Wheel handle screw
30		Handle	65		Wheel handle w/ screw
31		Optional 3" metal push button	66		Stop cap
32		Optional bell nut	67	#40291021	Wheel handle repair kit
33	#08337	Valve body cover - chrome	68	N/A	Stop body

AQUAFLUSH CLOSET RETRO KITS

Light Blue Diaphragm



- #08500**
4.5 GPF
CLOSET Retro Kit
For Old Style
- #08297**
3.5 GPF
CLOSET Retro Kit
- #08505**
1.6 GPF
CLOSET Retro Kit
Low Consumption

AQUAFLUSH URINAL RETRO KITS

Light Blue Diaphragm



- #08502**
3.0 GPF
URINAL Retro Kit
- #08298**
1.5 GPF
URINAL Retro Kit
- #08506**
1.0 GPF
URINAL Retro Kit
Low Consumption
- #08750**
0.5 GPF
URINAL Retro Kit
Low Consumption

AQUAVANTAGE CLOSET RETRO KITS

Dark Blue Diaphragm



- #08508**
4.5 GPF
CLOSET Retro Kit
For Old Style
- #08583**
3.5 GPF
CLOSET Retro Kit
- #08567**
1.6 GPF
CLOSET Retro Kit
Low Consumption

AQUAVANTAGE URINAL RETRO KITS

Dark Blue Diaphragm



- #08522**
3.0 GPF
URINAL Retro Kit
- #08584**
1.5 GPF
URINAL Retro Kit
- #08599**
1.0 GPF
URINAL Retro Kit
Low Consumption
- #82036**
0.5 GPF
URINAL Retro Kit
Low Consumption

ZURN REPAIR PARTS



#08383
Diaphragm
for Aquaflush



#08509
Molded Disc



#08337
Chrome Cover



#08342
Plastic Inside Cover
(Light Blue)



#08507
URINAL Relief Valve
Black Plastic



#08341
CLOSET Relief Valve
White Plastic



#08385
Adjustable Guide



#08388
Volume Control
1.6 GPF Orange

AQUAFLUSH CLOSET RETRO KITS

Light Blue Diaphragm



#08500
4.5 GPF
CLOSET Retro Kit
For Old Style

#08297
3.5 GPF
CLOSET Retro Kit

#08505
1.6 GPF
CLOSET Retro Kit
Low Consumption

AQUAVANTAGE CLOSET RETRO KITS

Dark Blue Diaphragm



#08508
4.5 GPF
CLOSET Retro Kit
For Old Style

#08583
3.5 GPF
CLOSET Retro Kit

#08567
1.6 GPF
CLOSET Retro Kit
Low Consumption

AQUAFLUSH URINAL RETRO KITS

Light Blue Diaphragm



#08502
3.0 GPF
URINAL Retro Kit

#08298
1.5 GPF
URINAL Retro Kit

#08506
1.0 GPF
URINAL Retro Kit
Low Consumption

#08750
0.5 GPF
URINAL Retro Kit
Low Consumption

AQUAVANTAGE URINAL RETRO KITS

Dark Blue Diaphragm



#08522
3.0 GPF
URINAL Retro Kit

#08584
1.5 GPF
URINAL Retro Kit

#08599
1.0 GPF
URINAL Retro Kit
Low Consumption

#82036
0.5 GPF
URINAL Retro Kit
Low Consumption

DRINKING FOUNTAIN



ELKAY®

VANDAL RESISTANT WATER COOLER WALL MOUNT - BARRIER FREE

#03572 (VRC8S)

Stainless Steel Finish



Self-contained, wall hung electric refrigerated, water cooler. Vandal-resistant unit. Rated for indoor or outdoor use.

Stainless steel construction provides vandal-resistant enclosure. Optional perforated stainless steel louver screening prevents objects from being inserted into cooler. Flow regulator provides constant stream from 20 to 105 psi water pressure.

Heavy duty push button control is vandal-resistant. Non-pressurized cooling tank is standard. Non-pressurized water tank is located after bubbler valve, so that tank is subject to line pressure only when push button is pressed.



ELKAY®

A.D.A. HI-LOW VANDAL RESISTANT WATER COOLER

#86452 (VRCTL8SC)



Self-contained, double wall hung electric refrigerated, water cooler. Vandal-resistant unit for use in high demand locations where vandalism may occur. Rated for indoor or outdoor use. Stainless steel construction provides vandal-resistant enclosure.

Optional perforated stainless steel louver screening prevents objects from being inserted into cooler. Flow regulator provides constant stream from 20 to 105 psi water pressure. Heavy duty push button control is vandal-resistant.



OASIS®

VANDAL RESISTANT BARRIER-FREE VERSACOOLER II

#57005 (PV8AC)



Delivers 8.0 gallons of chilled water per hour. The waterways are lead-free in materials and construction.

The basin is designed to eliminate splashing and standing water. Bubbler is of one piece stainless steel construction, and is vandal resistant. The innovative open backed design accommodates a variety of plumbing

connections and features removable side panels for easy access. Shipped with complete instructions and wall mounting bracket. Standard cabinet finish: Brushed Stainless Steel.



OASIS®

VANDAL RESISTANT BARRIER-FREE SPLIT LEVEL VERSACOOLER

#59561 (PV8ACSL)



Delivers 8.0 gallons of chilled drinking water per hour. The bubbler is constructed of one-piece stainless steel. One piece Vandal Resistant Stainless Steel bubbler. Vandal Resistant front push button. Vandal Resistant fasteners.

Built-in 100 micron strainer which stops particles before they enter the waterway. Removable side and front panels provides easy access for installation. Waste tailpiece can be cut at job site to accommodate trap waste height connection. Shipped with complete instructions and wall mounting bracket. Standard cabinet finish: Brushed Stainless Steel.

TMS is Your #1 Source for Drinking Fountain Repair Parts!



ELKAY®

OASIS®
WATER COOLERS

Haws®



Halsey Taylor®



SEC0615



CHICAGO FAUCETS

CHICAGO FAUCETS



#CF919S
PRE-RINSE
Upper Assembly Only

CHICAGO FAUCETS



#02318
PRE-RINSE SPRAY VALVE

CHICAGO FAUCETS



#02321
STAINLESS STEEL HOSE
44" Length

CHICAGO FAUCETS



#55065 (802-V665CP)
• Metered Self-Closing
• 4" Centers
• 4" Spout
• Vandal Proof Aerator



CHICAGO FAUCETS



#05508 (785-CP)
• 8" Centers
• Concealed Fitting
• 4" Blade Handles
• 3-1/2" Rigid/Swing Gooseneck Spout (GN1A)



CHICAGO FAUCETS



#55075 (540LDGP)
• 8" Centers
• 6" Spout



CHICAGO FAUCETS



#55132 (540-LD897SWXFCP)
• Chrome Service Sink Faucet
• 8" Centers
• Vacuum Breaker Spout

CHICAGO FAUCETS



#55130 (305-VBRRCF)
• Vacuum breaker spout short
• 3/4" Hose thread outlet
• Pail hook
• Adjustable from 4" to 8-3/8" centers
• With integral stops

CHICAGO FAUCETS



#51185 (445-CP)
• 4" to 8-3/8" Adjustable centers
• 6" Spout

CHICAGO FAUCETS



#82292 (420-CP)
• 4" Centers
• Extra Heavy Duty
• 4-5/8" Center to Center of Spout
• 1.5 GPM

CHICAGO FAUCETS



#55050 (802-VCP)
• 4" Centers
• 4" Spout
• Vandal Proof Aerator
• Vandal Proof Screws

CHICAGO FAUCETS



#05597 (802V-317CP)
• 4" Centers
• 4" Spout
• 4" Wrist Handles
• Vandal Proof Aerator

CHICAGO FAUCETS



#51197
• 4" Centers (1895-CP)
• 3-1/2" Spout
• 2.0 GPM aerator @80 psi

GRID DRAINS

INSTITUTIONAL NON-REMOVABLE CHROME GRID STRAINER

Heavy
Cast Brass!

Most
Popular!



#04929
1-1/4" x 6"
17 Gauge tailpiece

#04929EC
Budget

#44789
1-1/2" x 6"
17 Gauge tailpiece

#59553
1-1/4" x 6"
3/8" Center Opening

#SP3615
1-1/4" x 6"
Less overflow holes

A must for every commercial lavatory!

PUSH PULL LAVATORY DRAIN

#44414 C.P. Brass



- No linkage to adjust or break
- Theft resistant stopper
- Trouble free for hotels, motels, and rental Property as well as for individual homes
- Push to close - pull to open
- Holds firm at any in-between position
- Replaceable drip proof Buna-N seal
- Designed to fit any lavatory with built-in overflow

#55255 CO Type - No overflow
Press Flow operation

CHICAGO
FAUCETS



CHICAGO FAUCET GRID STRAINER

#SP8389 (327-XCP)
1-1/4" x 6"

RETRO-FIT BEEHIVE URINAL STRAINER

Eliminate Clogs By Adding Beehive Urinal Strainers to Your Urinals!



- #82732** For American Standard Washbrook Urinal
- #82733** For Crane Cromwell Urinal
- #82734** For Eljer Correcto Urinal
- #82735** For Kohler Barton Urinal



#85042 For American Standard Allbrook Urinal



#85233 For Kohler Dexter Urinal

BEEHIVE GRID STRAINER



#54320

Debris will not clog drain

WHEELCHAIR LAVATORY DRAIN



#05598

- Chrome brass perforated grid drain
- 4-1/2" offset
- 1-1/4" tailpiece

CRANE PRISON CARTRIDGE



#40120611

BRADLEY PARTS



#54983
OLD STYLE SOLENOID VALVE
For Express Lav
Thru Body



#57001
GANGED SOLENOID
OPEN Body Only
For #54983

#SP5406
GANGED SOLENOID
CLOSED Body Only
For #56288



#56288
OLD STYLE SOLENOID VALVE
For Express Lav
Closed Body



#54892
SHOWER SOLENOID VALVE
For Touch Time



#85235
NEW STYLE SOLENOID VALVE
Thru Body
For Touch Time



#81680
NEW STYLE SOLENOID VALVE
Closed Body



#58418
EQUA FLO STEM ASSEMBLY



#57412
**SOLENOID VALVE
REPAIR KIT**
For 3/4" Solenoids



#81547
SOLENOID VALVE REPAIR KIT
For #54892, #81680,
and #85235 Solenoids



#57906
**OLD STYLE PLUNGER & BODY
ASSEMBLY REPAIR KIT**
For Touch-n-Flo



#79044
**METERING VALVE
REPAIR KIT**
For Touch-n-Flo



#59246
**SHOWER VALVE
CARTRIDGE**
For Touch-n-Flo



#83676
**CERAMIC PRESSURE
BALANCE CARTRIDGE**
Current - For Touch-n-Flo



#57762
**SHOWER MIXING
VALVE CARTRIDGE**
For Equa-Flo



#45092
**WASH FOUNTAIN
CARTRIDGE**



#45093
**FAUCET
CARTRIDGE**



#41021426
HUBA VALVE REPAIR KIT
For Bradley Air Valve
Models 1030 Thru 1036



#40120100
RUBBER DIAPHRAGM
For Bradley Air Valves
Models 1030 thru 1036, and Air
Metering Valves



#41021299
**DIAPHRAGM FOR
PUSH BUTTON ASSEMBLY**

CHG PARTS



#58255
CHG PRE-RINSE
SPRAY VALVE

#58275
SELECT-A-SPRAY VALVE



#40310016
44" PRE-RINSE HOSE WITH
ANTIMICROBIAL HANDLE

A Great Replacement for T&S!



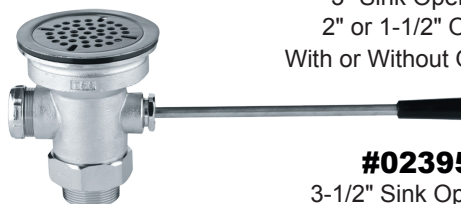
#80137
PRE-RINSE
Upper Assembly Only



TMS IS YOUR #1 SOURCE
FOR FLOOR GRATES!

MULTI-OUTLET LEVER WASTES

*Also Available with Twist Handle,
and/or a Straight 1-1/2" Outlet*



#02390
3" Sink Opening
2" or 1-1/2" Outlet
With or Without Overflow

#02395
3-1/2" Sink Opening
2" or 1-1/2" Outlet
With or Without Overflow

PARTS FOR LEVER HANDLE WASTES

#02250
REPAIR KIT



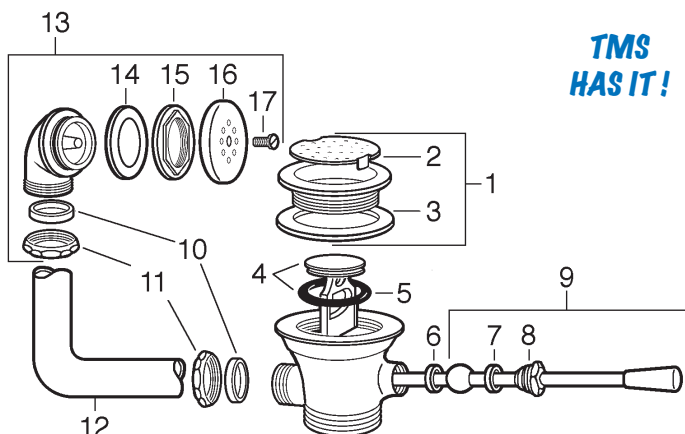
Contains common
replacement parts
for lever wastes

#02257
LEVER WASTE TOOL



• Use to install or
remove wastes with
3" or 3-1/2" openings.

TMS
HAS IT!

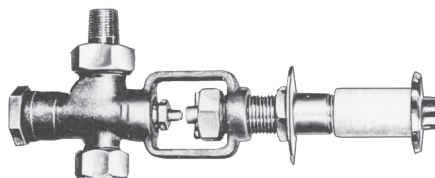
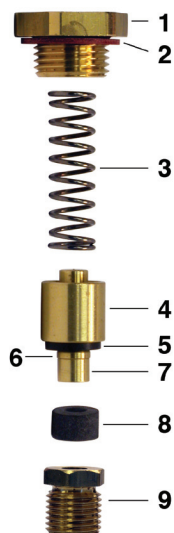


1	#02227	FLANGE ASSEMBLY 4-1/8" OD
	#02253	FLANGE ASSEMBLY 4-3/8" OD
2	#02119	FLAT STRAINER 3-1/8" DIAMETER
	#02091	FLAT STRAINER 3-7/16" DIAMETER
3	#02122	FLANGE WASHER - 3-1/2"
4	#02089	PLUNGER WITH O-RING
5	#02096	O-RING
6	#02125	BODY BUSHING
7	#02126	PACKING NUT BUSHING
8		PACKING NUT (No Longer Available)
9	#02123	LEVER ROD ASSEMBLY
10	#04903	COUPLING NUT WASHER
11	#04840	COUPLING NUT
12	#02100	OVERFLOW ELBOW
13	#02233	OVERFLOW HEAD ASSEMBLY
14	#02133	OVERFLOW WASHER
15	#02103	OVERFLOW FLANGED LOCKNUT
16	#02135	OVERFLOW STRAINER
17	#71362E	STRAINER MOUNTING SCREW

ELJER

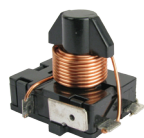
#40130730

ELJER PRISON VALVE REPAIR KIT



ITEM	PART #	DESCRIPTION	ITEM	PART #	DESCRIPTION
1	#40130111	Cap	6	#40130060	Collar
2	#40130112	Gasket	7	#40130061	Valve Stem
3	#40130526	Spring	8	#40130062	Packing
4	#40130058	Valve Head	9	#40130063	Packing Nut
5	#40130059	Seat Washer			

ELKAY



RELAY FOR WATER COOLER

#SP8761 (35959C)



SOLENOID VALVE

#05901 (35981C)

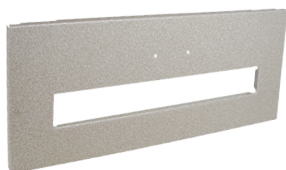
For Old EZ-Series



SOLENOID VALVE REGULATOR ASSEMBLY

#84663 (98466C)

For New Style EZ-Series



FRONT FOUNTAIN PANEL

#84945 (26597C)



FOUNTAIN IN-LINE STRAINER

#56010 (55996C)

Has push fittings
on both sides.
One side 1/4", the other 3/8"



PLASTIC CARTRIDGE WITH SPRING

#56005 (61314C)
For Cooler w/ Push Bar

#56005R (61313C)
For Cooler w/ Push Button



WATER BUBBLER

#50743 (56073C)

Chrome With Guard



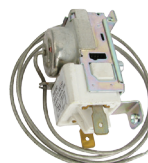
LOCK NUT

#50744 (70012C)



REPLACEMENT BUBBLER KIT

#05793 (92715C)



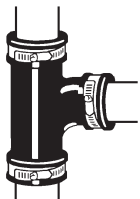
COLD CONTROL FOR WATER COOLER

#56037 (31513C)

FERNCO



DWV FLEXIBLE TEE



#44150	1-1/2"
#44329	2"
#44330	3"
#44331	4"

PLEASE
SPECIFY
TYPE OF
PIPE WHEN
ORDERING

- Allows for alteration or replacement of drain waste or vent fittings.
- Fits all common household pipes including cast iron, plastic, copper, and lead.



DWV FLEXIBLE ELBOW



#44151	1-1/2"
#44332	2"
#44333	3"
#44334	4"

PLEASE
SPECIFY
TYPE OF
PIPE WHEN
ORDERING

- Fits all common household pipes including cast iron, plastic, copper, and lead.
- Ideal replacement for fittings cut out at the joint during alteration or repair.



TUBULAR DRAIN PIPE CONNECTOR



#44153

- Quick, easy way to extend, alter, or repair any combination of 1-1/2" or 1-1/4" brass or plastic tubular.
- An economical leak free seal on sink lavatory, garbage disposal and laundry tub drainage systems.



CAST IRON OR PLASTIC TO TUBULAR



#44155

1-1/2" cast iron or plastic to 1-1/2" or 1-1/4" tubular

#44157

2" cast iron or plastic to 1-1/2" or 1-1/4" tubular



DISHWASHER CONNECTOR

#44152



- Connects dishwasher hose to sink drains
- PVC material



CAPS

Fits Cast Iron or Plastic



PART #	SIZE	PART #	SIZE	PART #	SIZE
#88582	1/2"	#50729	1-1/2"	#52347	4"
#88583	3/4"	#50730	2"	#52555	5"
#88584	1"	#52346	3"	#52556	6"



FLEXIBLE CONNECTORS

Fits Cast Iron or Plastic To Cast Iron or Plastic

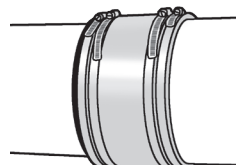


PART #	SIZE	PART #	SIZE
#56132	3/4"	#51093	2"
#56133	1"	#55740	3"
#55993	1-1/4"	#55787	4"
#51157	1-1/2"	#82406	6"

Other Sizes Available



STAINLESS STEEL SHEAR RINGS



Fernco's stainless steel shear rings are easy to attach and help maintain proper alignment in even the most unstable ground conditions. Bushings are supplied separately for material transition and size reduction.

Part#	Fits EC#	Fits Fernco#	Length	Width	Band Size
#85689	#51157	1056-150	9"	1.5"	32
#85690	#51093	1056-22	11"	1.5"	44
#85692	#55740	1056-33	15"	2"	64
#85693	#55787	1056-44 1055-44	19"	2"	88
#85694	#82406	1056-66	25"	4"	116

Other Sizes Available



CAST IRON NO HUB COUPLINGS

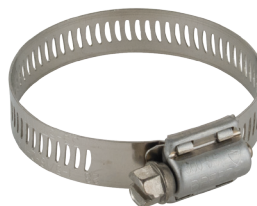


PART #	SIZE
#55515	1-1/2"
#56448	2"
#53282	3"
#53283	4"
#51568	6"

Other Types and Sizes Available

STAINLESS STEEL HOSE CLAMPS

PART #	CLAMP MIN.	DIAMETER MAX.	PART #	CLAMP MIN.	DIAMETER MAX.
#27030	1/2"	29/32"	#27036	1-1/16"	2"
#27031	9/16"	1-1/16"	#27037	1-5/16"	2-1/4"
#27033	11/16"	1-1/4"	#27038	1-9/16"	2-1/2"
#27034	13/16"	1-1/2"	#44167	1-13/16"	2-3/4"
#27035	13/16"	1-3/4"	#44168	2-1/16"	3"
			#44169	2-5/16"	3-1/4"
			#44170	2-9/16"	3-1/2"
			#44171	2-13/16"	3-3/4"
			#44172	3-1/16"	4"
			#44173	3-9/16"	4-1/2"
			#44174	1-7/8"	5"
			#44176	3-1/8"	6"
			#44177	3-5/8"	6-1/2"



FISHER

FLEXIBLE STAINLESS STEEL PLUMBING CONNECTORS

Faucet Connections

#40800259	9"	
#40800236	12"	
#40800237	16"	3/8" Female compression thread to
#40800238	20"	1/2" IPS female straight thread
#40800261	30"	
#83057	36"	

#40800239	12"	1/2" Female compression thread to
#40800240	16"	1/2" IPS Female straight thread
#40800241	20"	

#40800242	12"	1/2" IPS Female straight thread to
#40800243	16"	1/2" IPS Female straight thread
#40800244	20"	

#40800254	12"	3/8" Male compression to
#40800255	20"	3/8" Female compression

#40800258	12"	3/8" Female compression to
#40800256	16"	3/8" Female compression
#56720	20"	

Toilet Connections

#40800257	6"	
#40800380	9"	3/8" Female compression thread to
#40800381	12"	7/8" Female ballcock thread
#40800247	16"	

#40800382	9"	1/2" Female compression thread to
#40800383	12"	7/8" Female ballcock thread
#40800250	16"	

#81318	12"	3/8" Female compression thread to 7/8" Female ballcock thread
--------	-----	--



HEAVY DUTY CP BALL VALVE



PART#	INLET	OUTLET OD
#51440	3/8 IPS	3/8
#52150	1/2 SWEAT	3/8
#51443	1/2 IPS	3/8
#51464	1/2 IPS	1/2
#52151	5/8 OD	3/8
#52152	5/8 OD	1/2



HEAVY DUTY CP STRAIGHT STOP BALL VALVE



PART#	INLET	OUTLET OD
#51465	3/8 IPS	3/8
#52147	1/2 SWEAT	3/8
#51467	1/2 IPS	3/8
#51468	1/2 IPS	1/2
#52148	5/8 OD	3/8
#52149	5/8 OD	1/2

FISHER



#05285
Screw



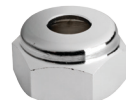
#50921
Friction Washer



#44814
Packing



#46635
Blue Index



#02323
C. P. Bonnet



#82293
Lever Handle with
Hot & Cold Indexes



#46636
Red Index



#02325
Complete Hot
Stem Assembly



#44815 RH
#44818 LH



#44819
Valve Stem
Repair Kit



#51254
Plunger Assy.
for Pedal Valve

#02326
Complete Cold
Stem Assembly



#44820
Pre-Rinse Hose
36" Length
1/4" IPS x 3/8" IPS



#83246
Pre-Rinse Hose
44" Length
Fits Multiple Brands



#02319
Fisher Pre-Rinse
Spray Valve



#80686
Fisher Pre-Rinse
Spray Valve



#58321
21" Riser

T&S REPAIR PARTS



PRE-RINSE SPRAY VALVES

Built For Comfort to Reduce Fatigue



#58676 (B108C)
1.2 GPM - Water Saver

#58677 (B108)
1.48 GPM - Water Saver

#84786
Spray Face Repair Kit
Includes Spray Face
and Washer

#83697
Spray Valve Repair Kit
Includes Spanner Bit,
Plug Assembly, Silicone Grease,
Valve Assembly and Spring

#85281
Jet Spray Valve Hose Adapter
Adapter allows jet spray valves to fit right onto
the grey handle. Standard on T&S hoses.



PRE-RINSE SPRAY VALVE #02007



Well constructed and versatile spray head designed especially for heavy duty use in industrial kitchens. Provides a high pressure spray when handle is pressed down and shuts off when handle is released.

REPAIR KIT FOR SPRAY VALVE #02010

Repairs #02007 Pre-Rinse Spray Valve



Contains:

- 1 Rubber Ring
- 1 Seat Washer
- 1 Binding Washer
- 2 Bonnet Washers
- 2 Packings
- 1 Spring
- 2 Hose Washers



RUBBER RING #02190

For #02007 Valve



Old Style



New Style



STAINLESS STEEL HOSES



#02012 36" Length

#02013 44" Length (Most Common)

#02014 68" Length

Length includes grey handle.
Custom lengths available on request.



HANDLE ASSEMBLIES & STEMS



#02192 H
#02193 C



#51433 H
#51432 C

With spring check
to prevent crossover.



Ceramic
#57191 H
#57192 C



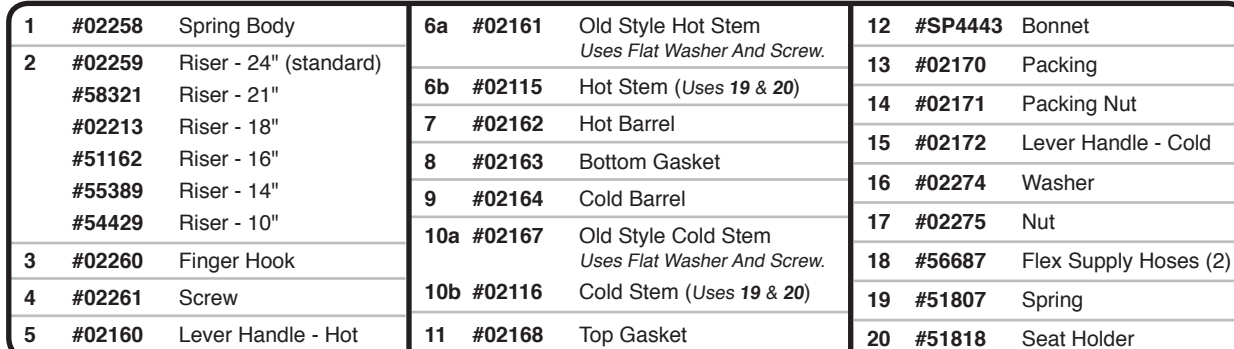
#02384
Metering Valve
Cartridge



PRE-RINSE ASSEMBLIES



PRE-RINSE
Upper Assembly Only
#51530



TOOLS

MEGAPRO DRIVERS

The Original #37696

The most popular Megapro® driver! Loaded with 7 double end professional quality bits, this assortment provides the 14 most popular tips for driving screws.

Tamperproof #37697

This 15-in-1 is a must for all commercial and industrial tradesmen. The Tamperproof assortment includes the most popular security bits, including Spanners, Hex Pins and Torx Pins. The shaft opening serves as a 1/4" hex driver!

ShaftLOK #37698

New bit design - patents pending. Locking shaft eliminates the danger of bits falling out of the shaft when getting partially stuck in the fastener.

Ratcheting #37702

Features patent pending ZAD 8 Zinc Alloy SOLID-CORE ratchet that delivers over 225 inch lbs of torque strength. Precision 28-tooth ratchet design makes driving faster and easier.

HVAC #37710

14 bit tips featuring Schrader Valve Stem bit, Square Awl Reamer bit, and DoubleLok Phillips #2 combo bit, which can be used in any quick change chuck.



EXTENDABLE MAGNETIC INSPECTION TOOL & FLASHLIGHT

#36194

Extends from 6" to 21". The 360° rotating inspection mirror illuminates what you've lost or dropped. Magnetic heads help you retrieve the items you can't reach with your hands.



PIPE WRAP TAPE

#79045 1" x 16 ft.

Use on Copper, PVC, Galvanized, Brass, CPVC, etc. Self bonding. Works under water!



EVERSEAL™ PICK-PROOF ADHESIVE SEALANT

#60500137 10.3 oz. Cartridge

Unsurpassed bonding and sealing security for materials such as concrete, finished metals, plastics, fiberglass pipe, conduit, FRP, plywood and composites.



SPECIAL TAMPERPROOF BIT KIT

A must for every maintenance department!

#36064

This complete set includes security bits to remove tamper resistant screws, as well as standard bits for more common fasteners. This kit also includes a heavy duty ratchet screwdriver with forward, reverse, and conventional settings. All bits fit any 1/4" hex driver and most power screwdrivers.



HAND HELD MINI PLUNGER

#03406

Designed especially for drinking fountains, sinks & for any low profile area.



O-RING PICK

#34448



DUAL CLOSE QUARTER DRIVER SET

#37304

Includes tamper proof torx bits T8 thru T30



TOOLS

TELESCOPIC CLOSET AUGER WITH DOWN HEAD

#03129

6 Foot Length



TELETUBE URINAL AUGER

#35390

4 Foot Length



DRIP-PROOF CARRYING CASES

Sanitary solutions to walking around with a dripping plunger or auger! After use, just toss your plunger or auger into the bag, zip it up, and go! No mess, no hassle. Includes a mesh side panel for air circulation



#36178
Plungers Case Only



#36177
Auger Case Only

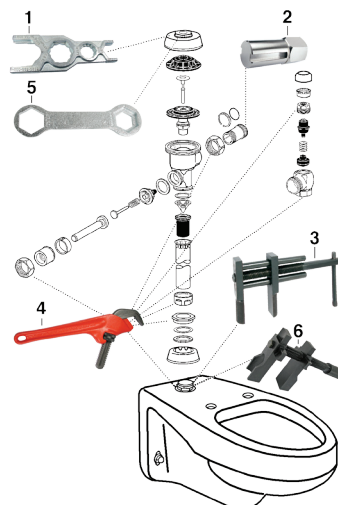
PALMSCOPE™ #36825

The World's First Full-Featured Pocket-Sized Video Inspection System!



- Fits in your pocket.
- Two-foot long, thin camera-tipped probe penetrates tight, hard to reach spaces.
- Probe is waterproof and holds its shape.
- Four camera-lighting LEDs produce bright, crisp video on large color LCD.
- Includes nylon pouch with belt clip, four probe tip accessories (pickup hook, magnetic pickup, 90° mirror, and thread protector.)

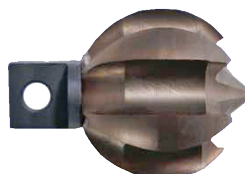
FLUSHOMETER TOOLS



- | | |
|---|--|
| 1. #08047
Sloan Super Wrench | 4. #08070
Non-Marking Valve Wrench |
| 2. #08063
Tailpiece Removing Tool | 5. #08010
Cover and Nut Removing Tool |
| 3. #03118HD
Spud Wrench | 6. #03145
Multi-Purpose Inside Spud Wrench |

General
PIPE CLEANERS

CLOG CHOPPER™



Rip through tough stoppages with the unique ClogChopper™ multi-function cutting tools! For 5/16" & 3/8" cables.

Great for cleaning scale in pipes behind urinal!

- | | | |
|---|---|--|
| #36505
1" ClogChopper™
For General Wire
5/16" & 3/8" cables | #37733
2" ClogChopper™
For General Wire
5/16" & 3/8" cables | #37733R
2" ClogChopper™
For Rigid 7/8" cables |
| #37741
3" ClogChopper™
For General Wire
5/8" & 3/4" cables | #37741R
3" ClogChopper™
For Rigid
7/8" cables | #37740
4" ClogChopper™
For General Wire
5/8" & 3/4" cables |

HINGE DOCTOR KIT

#36758

Kit includes all three above Hinge Doctors, as well as "The Hulk" for most residential hinges.



**TMS is Your #1 Source For
Sewer Machine Repair Parts!**



General
PIPE CLEANERS

RIDGID

Electric Eel



TOOLS

Heavy Duty!

GUARDIAN® DRAIN LOCK



- Designed specifically for floor sinks to prevent debris from clogging the pipes.
- Prevents damage to P-traps from cabling.
- Cuts down on solid waste.
- Prevents floating rags/bags from blocking pipe exit.
- Prevents blockage in common area/city main lines.
- Made of stainless steel.

#84490 2"

#84491 3"

#84492 4"

#84493 2" Torx Key

#84494 3" and 4" Torx Key



GUARDIAN DOME D-LOCK

NEW!



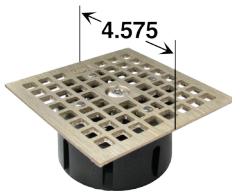
- Floor Sink Dome Drain Lock
- Prevents debris from entering drain lines
- Allows water to flow despite debris build-up in sink
- Locks using a tamper proof torx bolt
- Easy to install - no assembly required

#88218 - 2"

#88219 - 3"

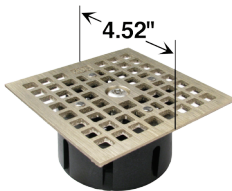
#88220 - 4"

DRAIN LOCKS - FIT 4" OPENING



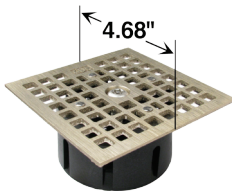
#86828

Square locking drain grate - nickel bronze.
REPLACES SMITH



#86829

Square locking drain grate - nickel bronze.
REPLACES JOSAM



#86830

Square locking drain grate - nickel bronze.
REPLACES ZURN

ROCONNECT COMPACT PRESS TOOL KIT

The Fastest Way to Repair Broken or Leaky Pipes!

#36848



Features:

- Lightweight and compact
- Twist 'n release locking pin for quick exchange of jaws
- Jaw fixture rotates 350° for work in tight spaces
- Over-molded grip for comfort and one-handed operation
- One trigger controls all tool functions
- Retract button allows user to back out mid-cycle to save fittings and avoid mistakes
- LED illumination work light when working in dark spaces
- LED monitor displays battery charge and tool maintenance status
- High-quality, long lasting 18V Makita Li-ion quick charge battery
- Up to 300 crimps per charge
- Three-year warranty

Kit includes

- Press Tool
- Carrying Case
- Battery Charger
- Copper Jaws 1/2", 3/4", and 1"



COPPER CRIMP FITTINGS KIT

#87752



- 36 Piece Kit
- Includes 1/2 & 3/4 sizes of couplings, FNPT, MNPT, elbows, tees, caps, and ball valves.
- For use with the **#36848** Press Tool (See above)

TUBULAR



EXTENSION TUBE SLIP JOINT - 17 GAUGE

#04936	1-1/4" x 6"	#04939	1-1/2" x 6"
#04937	1-1/4" x 8"	#04940	1-1/2" x 8"
#04938	1-1/4" x 12"	#04941	1-1/2" x 12"

2" FLANGED SINK TAILPIECE - 17 GAUGE



#44029	2" x 6"
#44030	2" x 8"
#44031	2" x 12"



EXTENSION TUBES - 17 GAUGE THREADED BOTH ENDS

#44025	1-1/4" x 6"	#04826	1-1/2" x 8"
#04824	1-1/4" x 8"	#04827	1-1/2" x 12"
#04825	1-1/4" x 12"		



DOUBLE SLIP JOINT EXTENSION TUBE 17 GAUGE

#82667 1-1/2" x 16"



REDUCING FLANGED SINK TAILPIECE - 17 GAUGE

#04819	1-1/2" x 1-1/4" x 6"
#04820	1-1/2" x 1-1/4" x 8"
#44021	1-1/2" x 1-1/4" x 12"



EXTENSION TUBES - 17 GAUGE EXPANDED THREADS - ONE END

#44028 1-1/2" x 1-1/4" x 8"



TUBULAR CHROME TAILPIECE 17 GAUGE

#53606 1-1/4" x 8"

DIE CAST SLIP JOINT NUT CHROME PLATED (BUDGET)

Includes washer



#04835	1-1/4"
#04836	1-1/2" x 1-1/4"
#04838	1-1/2"
#04839	2"
#04837	2" x 1-1/2"

FLANGED SINK TAILPIECE - 17 GAUGE



#04821	1-1/2" x 6"
#04822	1-1/2" x 8"
#04823	1-1/2" x 12"

*Heavy
Cast
Brass!*

CAST SLIP JOINT NUT CHROME PLATED

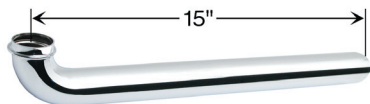
Includes washer



#04840	1-1/4"
#04841	1-1/2" x 1-1/4"
#04842	1-1/2"
#04843	2"
#04844	2" x 1-1/2"

TUBULAR

WALL BEND FOR "P" TRAP EXTRA LONG - 17 GAUGE



#44005 1-1/4" x 15"
#44006 1-1/2" x 15"



RUBBER "J" BEND

#04947

REPLACES 1-1/2" OR 1-1/4"
PLASTIC OR BRASS DRAIN TRAPS



- Flexible - adjusts for misalignments
- Resists freeze damage
- Squeeze to clean
- Easy to install with screwdriver or nut driver



"S" TRAP - 17 GAUGE

#04919 1-1/4"
#04920 1-1/2"

SLIP JOINT COUPLING



#04831 1-1/4"
#04830 1-1/2"

SLIP JOINT ELBOWS



#04829 1-1/4"
#04828 1-1/2"



#04833 1-1/4"
#04832 1-1/2"

SLIP JOINT TEE



#04834 1-1/2"

CHROME PLATED LOW PATTERN SURE GRIP FLANGE

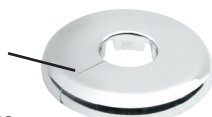


#04675 3/8" OD	#04680 1/2" IPS
#44775 5/8" OD	#44400 3/4" IPS
#04677 1-1/4" OD	#44401 1" IPS
#04678 1-1/2" OD	#44402 1-1/4" IPS
#04679 3/8" IPS	

Other sizes available on request

FLOOR AND CEILING PLATES CHROME PLATED PLASTIC - FLEXIBLE

*Split for Ease
of Installation*



*Try
This !*

FITS		COPPER	
#44205	3/8" IPS	#44201	1/2" (5/8 OD)
#44196	1/2" IPS	#44202	3/4" (7/8 OD)
#44197	3/4" IPS	#44203	1" (1-1/8" OD)
#44198	1" IPS	#44204	1-1/4" (1-3/8" OD)
#44199	1-1/4" IPS	#44776	1-1/2" (1-5/8" OD)
#44200	1-1/2" IPS	#44777	2" (2-1/8" OD)

Other sizes available on request

CHROME PLATED BOX FLANGE



#44191 1-1/4" OD
#44192 1-1/2" OD
#44194 1-1/4" IPS
#44195 1-1/2" IPS

DESANCO WASTE CONNECTIONS - BRASS WITH CHROME PLATED BRASS NUTS



FEMALE SWEAT

#44008 1-1/4" OD x 1-1/4"
#44009 1-1/4" OD x 1-1/2"
#44010 1-1/2" OD x 1-1/2"



MALE IPS THREAD

#04647 1-1/4" OD x 1-1/4"
#04648 1-1/4" OD x 1-1/2"
#04649 1-1/2" OD x 1-1/2"



FEMALE IPS THREAD

#04653 1-1/4" OD x 1-1/4"
#04654 1-1/4" OD x 1-1/2"
#04655 1-1/2" OD x 1-1/2"

Other sizes and styles available on request

TUBULAR



"P" TRAP - 17 GAUGE



#04921 1-1/4"

#04922 1-1/2"

The best trap you can buy!

SINK TRAP - GROUND JOINT 17 GAUGE



#04913 1-1/4"

#04914 1-1/2"

#04915 1-1/2" x 1-1/4"

Slip joint available upon request

"P" TRAP WITH CLEAN OUT - 17 GAUGE



#44012 1-1/4"

#44013 1-1/2"

#44335 2"

SINK TRAP - GROUND JOINT WITH CLEAN OUT



#44397 1-1/2"
17 Gauge

#44156 2" - Semi cast only

Slip joint available upon request

SEMI-CAST "P" TRAP WITH CLEAN OUT



#44014 1-1/4"

#44015 1-1/2"

REPAIR TRAPS - 17 GAUGE



#04990 1-1/4"

#04991 1-1/2"

- Slip joint connection
- No need to desolder tube from wall. Just cut & slip over existing tube.

"P" TRAP "J" BEND 17 GAUGE



#04923 1-1/4"

#04924 1-1/2"

SINK TRAP "J" BEND GROUND JOINT - 17 GAUGE



#04916 1-1/4"

#04917 1-1/2"

Slip joint available upon request

"P" TRAP "J" BEND WITH CLEAN OUT 17 GAUGE



#44118 1-1/4"

#44119 1-1/2"

SINK TRAP "J" BEND GROUND JOINT AND CLEAN OUT 17 GAUGE



#44120 1-1/4"

#44121 1-1/2"

Slip joint available upon request





TOTAL MAINTENANCE SOLUTIONS



TMS is a unique distributor of a complete line of plumbing and mechanical specialties. We pride ourselves on supplying the highest quality genuine replacement parts, while providing exceptional customized service.

PLUMBING • DRINKING FOUNTAIN • FLUSH VALVE • CLOSET & URINAL • FAUCET PARTS • HOSE VALVE & FITTINGS
HEATING • KITCHEN • HARDWARE • WASHROOM • TOOLS • PARTITIONS • GLIDES & CASTERS
FASTENERS & ANCHORS • SAFETY • LOCKERS • WINDOW & DOOR • ELECTRICAL • HYDRANT

TOLL FREE: 800-442-6622 • PITTSBURGH: 412-781-9100 • FAX: 412-781-3085
www.equiparts.net • www.sloanrepair.com