



HANDS-FREE CATALOG

Featuring Products To Create a Touch-Free Restroom Experience



Call Us For Technical Assistance!

Toll Free: 800-442-6622 • Pittsburgh: 412-781-9100 • Fax: 412-781-3085
www.equiparts.net • www.equipartsdrinkingfountains.com

TERMS AND CONDITIONS OF SALES



TERMS

MINIMUM ORDER IS \$50.00. Net 30 days from the invoice date. Finance charges will be added to past due invoices. All orders are subject to credit approval. Equiparts accepts Visa, Mastercard, Discover, and American Express.



FREIGHT

Freight charges will be added to the invoice. Most shipments are via UPS. Unusually large or heavy orders may ship via Common Carrier. Equiparts ships all products we carry to the continental United States. In addition, we ship a vast majority of items we carry, with the exception of water coolers, partitions, china, and other large items, to Hawaii, Alaska, Canada, Puerto Rico and the US Virgin Islands. We can prepare and deliver shipments to freight forwarders in the United States for export to just about anywhere.

CLAIMS, DEFECT & DAMAGES

Claims for shortages, damages or defects must be made within 10 days of the invoice date. Common Carrier deliveries must be inspected before signing bill of lading. Defective items will be replaced at no charge. Items misused or damaged by customer are non-returnable.

RETURNS

All returns must be pre-approved and assigned a return goods authorization before returning. Special or customized orders are non-returnable. All returns are subject to an inspection. Returns must be within 30 days of the invoice date, and returns must be in their original condition and packaging. Returns may be subject to a restocking charge.

PRICES & TAXES

Prices are subject to change without notice. All sales & usage taxes are paid by the buyer unless a tax exemption certificate is filed with Equiparts.

WARRANTY

Equiparts acts as a warrantor only on behalf of manufacturers written policy. No other warranties are expressed or implied.

HOW TO ORDER

Call our Toll Free Customer Service Line at 800-442-6622, fax your order to 412-781-3085, or place orders with your Equiparts Representative.

Any usage of original manufacturers' names or numbers, product names, and model names or numbers on invoices, quotes, or packing slips are strictly for descriptive and identification purposes. All drawing representations or depictions of original manufacturers' products in TMS-Equiparts catalogs or faxes are strictly for identification purposes, and are used to determine the proper Equiparts replacement part. They are not meant to imply that the parts are manufactured by the original equipment manufacturer.

Sloan Electronic Flushometers

SLOAN®

COMPLETE FLUSHOMETERS - DUAL FLUSH/SINGLE FLUSH

Exposed, Battery Powered, Side Mount,
Sensor Activated Flushometers for Top Spud Fixtures



DUAL FLUSH WATER CLOSET

#85607 (111-1.6/1.1DFSM)
1.6 or 1.1 GPF
1-1/2" Vacuum Breaker

- For 1-1/2" Top Spud Closets
- Smart Sense Technology™ features a self-adaptive infrared sensor, and automatically provides reduced flush when user is in range for less than 60 seconds.
- Reduced flush on a 1.6 gpf flushometer will deliver 1.1 gpf, a 31% savings in water per flush.
- Full flush automatically provided when user is present longer than 60 seconds.
- Non-hold open, user initiated True Mechanical Override (TMO) black button provides full flush.
- Small, green button provides user initiated reduced flush option.

ALL UNITS

- Quiet, diaphragm type chrome plated closet flushometer
- Permex® synthetic rubber diaphragm with dual filtered bypass
- High copper, low zinc brass castings for dezincification resistance
- Adjustable tailpiece
- Free-spinning vandal resistant stop cap
- 1" IPS screwdriver Bak-Chek® angle stop
- High back pressure vacuum breaker flush connection
- Right or left side mountable
- Chrome plated housing
- Includes 4 C cell alkaline batteries
- Three-year battery life at 3000 flushes per month
- ADA compliant infrared side mount sensor for automatic hands free activation
- User friendly three-second flush delay
- Automatic 72 hour sentinel flush keeps fixture fresh during periods of non-use
- Indicator lights show when user is in range or battery is low
- Three-year limited warranty



SINGLE FLUSH WATER CLOSET

#85609 (111-1.6SFSM) **1.6 GPF**
#85610 (111-1.28SFSM) **1.28 GPF**
1-1/2" Vacuum Breakers

- For 1-1/2" Top Spud Closets
- Smart Sense Technology™ features self-adaptive infrared sensor.
- Non-hold open user-initiated True Mechanical Override (TMO) Button



SINGLE FLUSH URINAL

#85611 (186-1.0SFSM)
1.0 GPF
3/4" Vacuum Breaker

- For 3/4" Top Spud Urinals.
- Smart Sense Technology Features Self-Adaptive Infrared Sensor.
- Non-hold open user-initiated True Mechanical Override (TMO) Button

Sloan G2 Optima Plus Flushometers



INTEGRATED DESIGN WITH STUNNINGLY ACCURATE ELECTRONIC PERFORMANCE

G2 Optima Plus defines technology, from its innovative electronic circuitry, to its stylish high-tech appearance. Whether it's high humidity, high activity, or low water quality, the G2 Optima Plus Flushometer has been engineered to perform.



- ADA Compliant Optima Plus Battery Powered Infrared Sensor for automatic "No Hands" operation.
- 24-hour "sentinel" automatic flush for improved hygiene.
- Gold-plated battery contacts for consistent electronic connections.
- User friendly three-second flush delay.
- "Courtesy Flush" Override Button

FUNCTIONAL & HYGIENIC

Touchless, sensor operation eliminates the need for user contact, which helps control the spread of infectious diseases. The G2 Optima Plus Flushometer is provided with an Override Button to allow a "courtesy flush" for individual user comfort.

THE COVER

The G2 Optima Plus cover is 360° of solid metal construction, accentuated by an engineered plastic optical face. There is no need to shut off the water supply to change batteries or service the module. G2's cover removes simply by unfastening two screws.

G2'S ISOLATED OPERATOR

What makes G2 Optima Plus® revolutionary is its patented Isolated Operator. The Isolated Operator allows for reliable, consistent operation regardless of water quality. The G2 Isolated Operator can withstand aggressive water applications

THE "TECHNOLOGY" FLUSHOMETER FOR ANY INSTALLATION

The G2 Optima Plus is shipped dormant, with batteries installed. When it arrives, simply install it and activate. It's that simple.

COMPLETE ROYAL OPTIMA PLUS HANDS FREE FLUSH VALVE



#08420 URINAL - 3.0 GPF
For 1-1/4" Vacuum Breaker, 1" Stop

#08422 URINAL - 1.5 GPF
For 1-1/4" Vacuum Breaker, 1" Stop

#08423 URINAL - 1.0 GPF
For 1-1/4" Vacuum Breaker, 1" Stop

COMPLETE ROYAL OPTIMA PLUS HANDS FREE FLUSH VALVE WITH MANUAL OVERRIDE



#08400 CLOSET - 3.5 GPF
1-1/2" Vacuum Breaker, 1" Stop

#08402 CLOSET - 1.6 GPF
1-1/2" Vacuum Breaker, 1" Stop

#81038 CLOSET - 1.28 GPF
1-1/2" Vacuum Breaker, 1" Stop

COMPLETE ROYAL OPTIMA PLUS HANDS FREE FLUSH VALVE



#08424 URINAL - 1.5 GPF
For 3/4" Vacuum Breaker, 3/4" Stop

#08404 URINAL - 1.0 GPF
For 3/4" Vacuum Breaker, 3/4" Stop

#08840 URINAL - 0.5 GPF
For 3/4" Vacuum Breaker, 3/4" Stop

#81039 URINAL - 0.25 GPF
For 3/4" Vacuum Breaker, 3/4" Stop

Sloan G2 Optima Plus Retrofit

SLOAN

HANDS FREE G2 RETROFIT FOR FLUSHOMETER



Installs In Less Than Five Minutes!

Sloan's G2 Optima Plus battery operated flushometers turn any restroom into an odorless, highly hygienic place. They can retrofit on all existing Sloan Royal or most other diaphragm valves quickly and easily. G2 Optima Plus flushes automatically after each use, so it will keep things cleaner, longer! People will appreciate the clean condition of the restroom. Great for ADA restrooms. Uses four AA three-year life batteries.

- Battery operated - no need for AC hookups.
- Four (4) size AA batteries factory installed.
- Batteries will last more than 3 years under normal usage.
- Easy to install in just minutes.
- Keeps restrooms cleaner, longer!
- Permex synthetic rubber diaphragm with dual filtered fixed bypass.
- Flex tube diaphragm designed for improved life and reduced maintenance.
- ADA compliant Optima Plus battery powered infrared sensor for automatic "no hands" operation.
- Isolated latching solenoid operator isolates magnetic components from water contact.



FROM THIS...

TO THIS!
IN JUST MINUTES!

#08700

CLOSET 3.5 OR 1.6 GPF

This product is shipped with the 1.6 GPF regulator installed. Change regulator to convert to a 3.5 GPF.

#08800

URINAL 1.5 OR 1.0 GPF

This product is shipped with the 1.0 GPF regulator installed. Change regulator to convert to a 1.5 GPF.

#08875

URINAL 0.5 GPF

This product is shipped with only one regulator and is factory set at 0.5 GPF.

#81040

CLOSET 2.4 GPF

#81041

CLOSET 1.28 GPF

#08700Z

FITS ZURN

CLOSET 3.5 OR 1.6 GPF

This product is shipped with the 1.6 GPF regulator installed. Change regulator to convert to a 3.5 GPF.

#08800Z

FITS ZURN

URINAL 1.5 OR 1.0 GPF

This product is shipped with the 1.0 GPF regulator installed. Change regulator to convert to a 1.5 GPF.

Sloan Ecos Dual Flush



The World's First True Dual-Flush Electronic Flushometer



SLOAN ECOS DUAL-FLUSH CLOSET FLUSHOMETER

#08922

The Sloan ECOS™ Dual-Flush Flushometer is the first electronic valve of its kind. Offering the user the choice between reduced flush (for liquids) or full flush (for solids), the Sloan ECOS Flushometer generates ground-breaking efficiencies through innovation.

AUTOMATIC DUAL-FLUSH OPERATION

The Sloan Ecos™ incorporates a multi-lobular infrared sensor into the flushometer. By detecting the duration of the user's presence, the Sloan Ecos™ Smart Sense Technology will determine the proper flush volume, (1.1 GPF for liquids, 1.6 GPF for solids,) for unequaled water efficiency.

FUNCTIONAL & HYGIENIC

Touchless, sensor operation eliminates the need for user contact to help control the spread of infectious diseases. The Sloan Ecos™ is provided with Reduced or Full Flush Override Buttons to allow a "courtesy flush" for individual user comfort.

Full Flush (Solids) 1.6 GPF
Reduced Flush (Liquids) 1.1 GPF

- Intuitive dual-flush operation
- Ground-breaking water efficiency
- Advanced Sloan sensor technology



SLOAN ECOS RETRO KIT

#08923



For Exposed
Closet Flushometers

#08923Z - Fits Zurn



G2 TO ECOS DUAL FLUSH CONVERSION KIT

#81042

Converts 1.6 GPF G2 Closet to
1.6/1.1 GPF Dual Flush Unit



SLOAN ECOS DUAL FLUSH MODULE

#80786

Sloan Solis

SLOAN SOLIS® FLUSHOMETERS

The Industry's First Solar-Powered, Sensor Operated Flushometer!

#80964
SLOAN SOLIS
0.5 GPF
URINAL FLUSHOMETER
 3/4" Top Spud

#83454
SLOAN SOLIS
1.0 GPF
URINAL FLUSHOMETER
 3/4" Top Spud

#84998
SLOAN SOLIS
DUAL FLUSH 1.6 - 1.1 GPF
CLOSET FLUSHOMETER
 1-1/2" Top Spud



SLOAN

Sloan SOLIS® Flushometers for water closets and urinals provide ground-breaking water efficiency and utilize state-of-the-art photovoltaic technology.

Sloan SOLIS® Flushometers use light to charge a highly efficient capacitor, providing power even in rooms with occupancy-controlled lighting.

Toilets account for most of the water used in commercial restrooms. The new SOLIS® High-Efficiency Flushometers are available in single-flush and dual-flush models.

If the user does not press a button, the Flushometer's Dual-Flush Smart Sense Technology™ takes over and automatically initiates a flush cycle, based on how long the user remains in the sensor range. Users who stay within the sensor range less than a minute activate the reduced flush; users who stay longer activate the full flush.

G2 TO SOLIS CONVERSION KITS



#81860
 G2 To Solis
 For 1.6/3.5 GPF Closet

#81862
 G2 To Solis
 For 1.1/1.5 GPF Urinal

#81861
 G2 To Solis Dual Flush
 Converts 1.6 GPF G2
 Closet to 1.6/1.1 Solar Unit

SOLIS DUAL-FLUSH RETRO KIT



#83078
 1.6/1.1 GPF

#83089
 Fits Zurn
 1.6/1.1 GPF

SOLIS RETRO KITS



#82857
 1.28 GPF - Closet

#83079
 1.6 or 3.5 GPF - Closet

#83081
 0.25 GPF - Urinal

#83082
 0.50 GPF - Urinal

#83083
 1.0 or 1.5 GPF - Urinal

True Mechanical Override Flushometer

SLOAN.

The first Non-Hold Open Override Flushometer in the Plumbing Industry!

Optima Exposed Flushometers offer the ultimate in flushing technology with the Optima EL-1500 infrared sensor, which adapts to its surroundings. Once the user enters the sensor's effective range and then steps away, the Flushometer solenoid automatically initiates the flush cycle.



- *Courtesy Flush Non-Hold-Open Override operates without power*
- *Improves restroom hygiene*
- *Permax synthetic rubber for long life*
- *RH or LH rough-in*
- *ADA compliant*
- *Self-adaptive infrared sensor with indicator light*
- *"Walk by" delay of eight seconds prevents unintentional flushes*
- *User-friendly three-second flush delay*
- *Free spinning vandal resistant stop cap*
- *Die-Cast Sensor Cover Plate with no visible fasteners and wall flange for 2-gang electrical box*

CLOSET



#83400

Closet - 3.5 GPF
1-1/2" Top Spud
1" IPS Control Stop

#83401

Closet - 1.6 GPF
1-1/2" Top Spud
1" IPS Control Stop

#83402

Closet - 1.28 GPF
1-1/2" Top Spud
1" IPS Control Stop

URINAL



#85440

Urinal - 1.5 GPF
3/4" Top Spud
3/4" IPS Control Stop

#85441

Urinal - 1.0 GPF
3/4" Top Spud
3/4" IPS Control Stop

#83403

Urinal - 1.5 GPF
1-1/4" Top Spud
1" IPS Control Stop

#83404

Urinal - 1.0 GPF
1-1/4" Top Spud
1" IPS Control Stop

SLOAN.

TRUE MECHANICAL OVERRIDE RETROFIT BODY



#83411

Must order drop-in kit separately.



#85536

Urinal - 0.125 GPF
3/4" Top Spud
3/4" IPS Control Stop

#85538

Urinal - 0.25 GPF
3/4" Top Spud
3/4" IPS Control Stop

#85539

Urinal - 0.5 GPF
3/4" Top Spud
3/4" IPS Control Stop

Side Mount Operators

SLOAN. SIDE MOUNT OPERATORS

*Battery Powered, Sensor Activated Retrofit
Conversion Kits For Exposed Flushometers*

- Retrofits to Royal, Sloan Regal, Crown, and Zurn Flushometers.
- Chrome plated housing.
- Includes 4 "C" batteries
- Three year battery life at 3000 flushes/month
- ADA compliant infrared side mount sensor for automatic hands free activation.
- User friendly three second flush delay.
- Automatic 72 hour sentinel flush keeps fixture fresh during periods of non-use
- Indicator lights show when user is in range or battery is low.
- 3 year limited warranty



**Sloan TMO Single-Flush
Side Mount Retrofit**
#85606 (EBV-500-A)

#85606CS
Case of 6



**Sloan TMO Dual-Flush
Side Mount Retrofit**
#85605 (EBV-550-A)

SIDE MOUNT OPERATOR WITH METAL COVER

SLOAN.



#08532
(EBV-89-AM)

- Fits Sloan or Zurn
- Sensor-operated for hands-free performance
- Low battery light notification
- Courtesy flush button
- Includes 4 "C" batteries
- ADA compliant
- No water shut-off required for installation or battery replacement
- Fixtures stay cleaner longer
- Helps eliminate odors

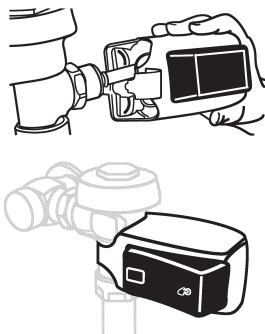
SLOAN. SMOOTH OPERATOR

For Closet or Urinal

#08825 (EBV-200-A)



**From Manual to Electronic
in Less Than a Minute!
No Assembly Needed!**



- Battery powered
- Includes 4 "C" batteries
- Installs over existing handle
- Left or right handed installation
- SMOOTH sleeps when the restroom is dark, extending battery life.

SIDE MOUNT RETROFIT FOR MANUAL PISTON FLUSH VALVE

*American
Standard*



#48402
(SMGO.PIS.002)

Fits American Standard
and Sloan GEM
piston-operated flush valves

SLOAN GEM FLUSH VALVE SIDE MOUNT ADAPTER

SLOAN.



#SP5524 (EBV-157)

Adapt Gem and Naval valves
to fit Sloan Side Mounts
#08532, #85605, and #85606.

*Just screw the adapter onto the Gem handle hole,
and then install the Side Mount onto the adapter.*

Sloan CX Flushometers

SLOAN CX

The Next Generation of Concealed Flushometers!

SLOAN



Sloan CX Manual Model 158 / 198



Sloan CX Sensor Model 8158 / 8198

The Sloan CX Concealed Flushometers are the next big thing in the plumbing industry. With over a century's worth of design and innovation, the new generation is here.

It can be configured in a variety of ways, meaning there is something for every facility. The CX comes in two main variations, Manual and Sensor. The Manual utilizes an ADA compliant push button, whereas the Sensor provides a hands-free operation. Both models feature a vandal resistant front access wall plate that eliminates the need for a rear access plumbing chase. Each has a fixed volume piston with a filtered o-ring bypass. The flush connection for all CX models can be adjusted.

The CX comes in 5 different finishes, Polished Chrome, Brushed Nickel, Matte Black, Brushed Stainless, and Polished Brass. Each of these finishes improve the look and feel of any facility's restrooms. The installation process has been streamlined. Features an integrated control stop, an adjustable flush connection, and an all vertical rough-in. Once the CX is installed, all maintenance can be done easily through the wall plate. This innovation cuts labor time in half.

MANUAL

vs.

SENSOR

- Fixed volume piston with filtered o-ring bypass
- Front access wall plate
- ADA compliant push button
- Vandal resistant wall plate
- Adjustable flush connection
- 1.28 or 1.6 GPF for Closet
- 0.125, 0.25, or 0.5 GPF for Urinal

- Fixed volume piston with filtered o-ring bypass
- Front access wall plate
- Sensor Activated, hands-free operation
- Battery operated with hardwired option
- Adjustable flush connection
- Electronic Override Button
- Vandal resistant wall plate
- Low battery indicator light
- 1.28 or 1.6 GPF for Closet
- 0.125, 0.25, or 0.5 GPF for Urinal

Sloan CX Flushometers

SLOAN



Matte Black



Brushed Nickel



Chrome



Matte Black



Brushed Nickel



Chrome

MANUAL

<i>Matte Black</i>	<i>Brushed Nickel</i>	<i>Chrome Plated</i>
#69390 (3400217) Manual Closet 1.28 GPF Matte Black	#69391 (3400209) Manual Closet 1.28 GPF Brushed Nickel	#69392 (3400201) Manual Closet 1.28 GPF Chrome Plated
#69393 (3400216) Manual Closet 1.6 GPF Matte Black	#69394 (3400208) Manual Closet 1.6 GPF Brushed Nickel	#69395 (3400200) Manual Closet 1.6 GPF Chrome Plated
#69396 (3400224) Manual Urinal 0.125 GPF Matte Black	#69397 (3400222) Manual Urinal 0.125 GPF Brushed Nickel	#69398 (3400220) Manual Urinal 0.125 GPF Chrome Plated
#69399 (3400219) Manual Urinal 0.25 GPF Matte Black	#69400 (3400211) Manual Urinal 0.25 GPF Brushed Nickel	#69401 (3400203) Manual Urinal 0.25 GPF Chrome Plated
#69402 (3400218) Manual Urinal 0.5 GPF Matte Black	#69403 (3400210) Manual Urinal 0.5 GPF Brushed Nickel	#69404 (3400202) Manual Urinal 0.5 GPF Chrome Plated

SENSOR

<i>Matte Black</i>	<i>Brushed Nickel</i>	<i>Chrome Plated</i>
#69405 (3400317) Sensor Closet 1.28 GPF Matte Black	#69406 (3400309) Sensor Closet 1.28 GPF Brushed Nickel	#69407 (3400301) Sensor Closet 1.28 GPF Chrome Plated
#69408 (3400316) Sensor Closet 1.6 GPF Matte Black	#69409 (3400308) Sensor Closet 1.6 GPF Brushed Nickel	#69410 (3400300) Sensor Closet 1.6 GPF Chrome Plated
#69411 (3400324) Sensor Urinal 0.125 GPF Matte Black	#69412 (3400322) Sensor Urinal 0.125 GPF Brushed Nickel	#69413 (3400320) Sensor Urinal 0.125 GPF Chrome Plated
#69414 (3400319) Sensor Urinal 0.25 GPF Matte Black	#69415 (3400311) Sensor Urinal 0.25 GPF Brushed Nickel	#69416 (3400303) Sensor Urinal 0.25 GPF Chrome Plated
#69417 (3400318) Sensor Urinal 0.5 GPF Matte Black	#69418 (3400310) Sensor Urinal 0.5 GPF Brushed Nickel	#69419 (3400302) Sensor Urinal 0.5 GPF Chrome Plated

CALL FOR OTHER COLOR FINISHES

Zurn EZ Gear Electronic Flushometers



EZ GEAR ELECTRONIC FLUSHOMETERS

No Solenoids!



The EZ Gear Flush Valve harnesses technology from Zurn's three proven solutions: E-Z Flush®, AquaSpec®, and GO BLUE®. They combined the dual action of E-Z Flush's motor-gear operation and AquaSpec's ceramic disc cartridge. E-Z Flush broke the mold, and continues to break records for its reliability. Next, they built on what works with their tough and chemical-resistant GO BLUE® diaphragm, gaskets and seals. The result? The next generation of optimized gear-driven sensor technology.

#48653
1.6/1.1 GPF

#48654
1.28 GPF

#48655
1.1 GPF

#48657
1.6 GPF

#48658
0.5 GPF

#48659
0.125 GPF

#48660
1.0 GPF

FEATURES

- **No Solenoid**

Motor-gear technology eliminates solenoids, and reduces moving parts in the waterway.

- **Ceramic Disc**

EZ Gear technology uses a ceramic disc cartridge that is the pulse of the AquaSpec faucet line. Together with the motor gear, it withstands heavy use. Count on it to last up to 1,000,000 uses!

- **Chemical resistance**

TPE GO BLUE diaphragm, gaskets and seals resist chemicals and last 8-10 times longer than traditional rubber parts.

- **Brass Body**

Heavy duty brass body with polished chrome finish stands up to extreme wear without losing luster for any modern restroom.



EZ GEAR SENSOR RETROFIT KITS



Replace your existing handle-operated diaphragm flush valve with the Zurn EZ Gear Sensor Retrofit Kit. The EZ Gear Technology delivers reliability, precision and efficiency to your commercial restroom. Thanks to the dual action of the ceramic disc cartridge and motor gear-driven operation, this upgraded flush valve outperforms and outlasts solenoid operated models, flush after flush. Compatible with urinal flush valves. It's the ideal solution for retrofit commercial restroom applications.

All EZ Gear Retrofit Kits Include a Strap Wrench

For Zurn

#48661 **#48662** **#48663**
1.6/1.1 GPF 1.28 GPF 1.1 GPF

#48664 **#48665** **#48666** **#48667**
1.6 GPF 0.5 GPF 0.125 GPF 1.0 GPF

For Sloan

#48661S **#48662S** **#48663S**
1.6/1.1 GPF 1.28 GPF 1.1 GPF

#48664S **#48665S** **#48666S** **#48667S**
1.6 GPF 0.5 GPF 0.125 GPF 1.0 GPF

Zurn Electronic Flushometers



ZURN SENSOR ACTIVATED FLUSH VALVES

- Clog-resistant, filtered by-pass piston
- True manual override button
- 10-year battery - LL Series (long life)
- Vandal-resistant stop cap
- High pressure vacuum breaker
- One-piece hex coupling nut
- Chloramine-resistant internal seals and gaskets
- Adjustable tailpiece
- Top spud connection



#69795 (ZTR6200-WS1)
1.6 GPF Closet



#66074 (ZTR6200EV)
1.28 GPF Closet

ZURN EZ-FLUSH WITH METAL COVER



#40265105
(ZERK-CPM)

#40265105CS
Case of 6

- Easily retrofits any Royal, Regal, Aquaflush, or Aquavantage flushometer
- Much cheaper to maintain than a G2
- Fewer internal components means less maintenance
- Automatic flush reduces odor and keeps restrooms cleaner for a longer period of time

ZURN SENSOR ASSEMBLY & VALVE CAP

Replacement For ZTR 1.0 GPF Flush Valves



#85811 1.6 GPF
(PTR6200-L-1.6)

#85810 1.28 GPF
(PTR6200-L-1.28)

#12538 1.1 GPF
(PTR6200-L-1.1)

#66794 1.0GPF
(PTR6200-L-1.0)

#12539 0.5 GPF
(PTR6200-L-0.5)

#12540 0.25 GPF
(PTR6200-L-.25)

#12541 0.125 GPF
(PTR6200-L-0.125)

ZURN SOLENOID ASSEMBLY



#85813
(PTR6200-M)

ZURN PISTON KIT 1.28 GPF / 1.6 GPF



#85814
(PTR6200-EC)

Sloan Electronic Flushometer Repair Parts

METAL COVER WITH OVERRIDE BUTTON



#08399 (EBV-60-A)
Includes Locking Ring

G2 METAL COVER WITH OVERRIDE



#08701 (EBV-142-A)
Does NOT Include
Locking Ring

ECOS METAL COVER



#80782 (EBV-191-A)
Does NOT Include
Locking Ring

SOLIS COVERS



#85586 (EBV-309-A)
Solis Cover



#85587 (EBV-311-A)
Solis Dual Flush Cover

WALL SENSOR REPLACEMENT KITS



#08276 (EL1500) For Urinal

#08450 (EL1500L) For Closet

MODULES



#08712 (EBV-146-AC)
Blue Closet Module
with Solenoid Base

#08709 (EBV-146-AU)
Blue Urinal Module
with Solenoid Base



#08698 (EBV-129-AU)
Blue Urinal Module
for New Style G2

#08697 (EBV-129-AC)
Blue Closet Module
for New Style G2



#80786 (EBV-196-A)
Sloan Ecos
Dual Flush Module

BASE PLATES

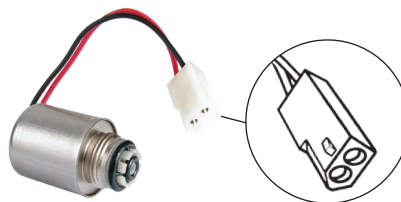


#08720 (EBV-145-A)
Optima Plus G2, New Style
Base with Solenoid

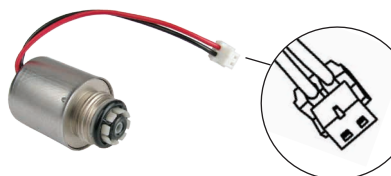
#08398 (EBV-21-A)
Optima Plus, Old Style,
Base with Solenoid

CAUTION: NOT Interchangeable

SOLENOIDS



#SP5825
(EBV-144-A)
Replacement
Solenoid Only
Old Style



#08721
(EBV-136-A)
Replacement
Solenoid Only
for New Style G2

Sloan Electronic Flushometer Repair Parts

HANDS FREE G2 RETRO KIT



#08700 (RESS-C)
CLOSET 3.5 or 1.6 GPF

Shipped with the 1.6 GPF regulator installed. Change regulator to convert to a 3.5 GPF.

#08800 (RESS-U)
URINAL 1.5 or 1.0 GPF

Shipped with the 1.0 GPF regulator installed. Change regulator to convert to a 1.5 GPF.

OPTIMA HANDS FREE RETRO KIT (G2)

Includes 4 AA Batteries



#85629

For 0.125 and 0.25 GPF Urinals

#08695

For 0.5 GPF Urinals

#08137

For 1.0 and 1.5 GPF Urinals

#83565

For 1.28 Closets

#08285

For 1.6 and 3.5 GPF Closets

#08710

2.4 GPF

SLOAN ECOS RETRO KIT



#08923

(ECOS RESS-C1/1.1R107KU)

For Exposed
Closet Flushometers
For 1.1 or 1.6 GPF

#08923Z

(ECOS RESS-Z-C1.6/1.1)

Fits Zurn
For 1.1 or 1.6 GPF

BUTTON COVER ASSEMBLY FOR G2 (OVERRIDE)



#08715 (EBV-130-A)

BUTTON COVER ASSEMBLY FOR ECOS (OVERRIDE)



#80783 (WES-23-A)

LOCKING RING



#08421 (EBV-14/168-A)

Chrome Locking Ring for Cover

#08406 (EBV-31-A)

Locking Ring for Zurn Valves



#08541 (A-108)

Old Style Filter Ring

Converts pre-1964 valve bodies to
accept Optima Plus diaphragm kits.



Just Call Equiparts!
800-442-6622

Flushometers & Toilet Seats

HAND-FREE FLUSHOMETERS FROM MOEN



#89750

1.28 GPF Closet

#89751

1.0/1.6 GPF Closet



#89749

0.125 GPF Urinal

TOTO HANDS FREE FLUSH VALVE



TOTO®

#66678

1.6 GPF Closet

#67887

1.0 GPF Urinal
with 3/4" VB & stop

HEAVY DUTY CLOSET SEATS

*With Stainless Steel
Self-Sustaining Check Hinges*



#05480

- Elongated Open Front
- Heavy Duty - White
- Less cover



#05481

- Elongated Open Front
- Heavy Duty - Black
- Less cover



#40310018

- **Antimicrobial**
- Elongated Open Front
- Less cover



#05480CH

- Elongated Open Front
- Heavy Duty - White
- Less cover



#05490

- Elongated Open Front
- Extra Heavy Duty - White
- Less cover



Chicago Electronic Faucets

CHICAGO
FAUCETS



CHICAGO E-TRONIC FAUCET

#81991 (116.606.AB.1)

- 4" Sensor faucet
- Vandal proof 0.5 GPM spray outlet
- Integral body construction
- Single supply for cold or tempered water
- Above-deck electronics
- Water-tight solenoid with filter screen
- 1/2" NPSM brass shank with filter screen



#81992 (242.164.21.1)
8" Trim Plate

CHICAGO HYTRONIC FAUCET

*Hytronic Hands Free Single Hole
Lav Faucet with External Mixing Valve*

CHICAGO
FAUCETS



#82147 (116.222.AB.1)

- All above deck watertight electronics
- Quick installation and adjustment
- 0.5 gpm pressure compensating Econo-Flo™ non-aerating spray (E2805JKABCP)
- Polished chrome
- Dual-beam infrared sensor
- Battery operated
- 6 volt lithium CRP2 battery included
- Dual supply for hot and cold water
- Stainless steel supply hoses included
- User adjustable temperature control mixer included



#80696 (240.627.21.1)
4" Trim Plate

#81451 (240.627.21.1)
8" Trim Plate

HYTRONIC TRADITIONAL SINK FAUCET WITH DUAL BEAM INFRARED SENSOR

#80911 (116.201.AB.1)

- Single Hole
- Includes Optional 2.2 GPM (8.3 L/min) Aerator Insert
- E2805 - 0.5 GPM (1.9 L/min) Vandal Proof Non-Aerating Spray
- Single Supply for Tempered Water
- 6 Volt Lithium CRP2 Battery (Included)

CHICAGO
FAUCETS



- Stainless Steel Hose Included
- Multiple Field Adjustable Modes and Ranges
- Geberit Commander™ Software Compatible



#81451
8" Plate



#80696
4" Plate

TOUCH-FREE LAV SINK FAUCET

CHICAGO
FAUCETS



#47308 (E80-A11A-17ABCP)

Single Hole



- Features user adjustable thermostatic mixer pre-assembled with concealed internal thermostatic control mixer
- Pressure compensating Econo-Flo™ non-aerating spray outlet 0.5 GPM

- Includes 6-volt lithium CRP2 battery
- Compatible with Commander™ Handheld Programming Unit; multiple field-adjustable modes and ranges
- Dual supply for hot and cold water
- Stainless steel supply hoses included
- Polished chrome

*Above Deck
Electronics!*



#88565 (3500-001-KJKCP)
4" Cover Plate



#88566 (3500-002-KJKCP)
8" Cover Plate

HYTRONIC GOOSENECK SINK FAUCET WITH DUAL BEAM INFRARED SENSOR

CHICAGO
FAUCETS



#83162 (116.123.AB.1)

- Single hole
- 5-1/4" rigid / swing gooseneck spout
- 0.5 GPM vandal proof non-aerating spray outlet
- Includes optional 2.2 GPM aerator insert
- Dual supply for hot & cold water service
- Stainless steel hoses included
- Above-deck electronics
- 12 Volt AC transformer required (order separately)
- User adjustable temp. Control external mixer
- Multiple field adjustable modes and ranges
- Geberit commander™ software compatible



#80696 (240.627.21.1)
4" Trim Plate

#81451 (240.628.21.1)
8" Trim Plate

Other Electronic Faucets

TRINSIC® SINGLE HANDLE PULL-DOWN KITCHEN FAUCET



Kitchen Faucets

#85898 (9159T-DST) - Chrome Plated

#85890 (9159T-AR-DST) - Stainless

Bar/Prep Faucets

#85566 (9959T-DST) - Chrome Plated

#85897 (9959T-AR-DST) - Stainless



Optional 8"
plate available

- 1.8 GPM
- Touch activated faucet featuring Touch2O® Technology
- Turns on and off with just a touch anywhere on the spout or handle
- Exclusive MagnaTite® spray head docking ensures a snug fit of the wand. Pull-down wand operates in an aerated or spray mode via ergonomic buttons
- A sophisticated style, inspired by the sleek elegance of modern European design

TOTO SELF-GENERATING ECOPOWER SYSTEM SINGLE HOLE SENSOR FAUCET WITH STANDARD SPOUT

TOTO®



#80805 (TEL5GSC-10)
Up to 10 second discharge

#80465 (TEL5GSC-60)
Up to 60 second discharge

- Single hole with mixing valve
- Integral thermostatic mixer
- Continuous discharge up to 60 seconds or 10 seconds.

• **Must specify 4" (#SP5428) or 8" (#56652) cover plate, sold separately**

The contemporary styled spout provides a cascading flow of water, utilizing less than 0.17 gallons per cycle, while a hydro-powered turbine charges the power supply during usage. This eliminates the need for battery replacement or consumption of external electrical power for up to 10 years. Check valves are integrated into the mixer to prevent cross flow of water.

Many other models available on request

ARBOR® MOTION SENSE PULL-DOWN KITCHEN FAUCET



#85567 (7594EC)



The Arbor® pull-down kitchen faucet with MotionSense™ provides the convenience of having a kitchen faucet that can literally sense what you're trying to accomplish and respond to what you need the moment you need it. That's because MotionSense activates flow based on simple hand movements. This convenient, hands-free control assists in accomplishing routine tasks with greater speed and efficiency. MotionSense delivers convenience on command.

- 1.5 GPM
- Pull-down spout - single lever
- Single hole mount
- ADA compliant
- Flow-optimized eco-performance products use up to 32% less water without sacrificing performance.
- MotionSense hands-free convenience to make everyday tasks easier
- 5 year warranty on digital components, limited lifetime trim warranty



#82048 (500484)
4" CP Auto Faucet
w/ Surround Sensor Technology

#82139 (500485)
8" CP Auto Faucet
w/ Surround Sensor Technology

#82715 (500483)
Single Hole Auto Lav Faucet w/
Surround Sensor Technology

- Auto Faucet SST® sets the standard for reliability and user friendly performance in automated faucet systems with patented Surround Sensor™ Technology.
- Touch-free activation eliminates cross-contamination to help reduce the spread of germs.
- Surround Sensor™ Technology creates a 3" omni-directional sensing zone guaranteeing activation every time.
- Patented "dry" cam gear technology (solenoid valve free) ensures trouble-free operation to reduce maintenance.
- Long battery life: 400,000 cycles or three years (4 "D" batteries included.)
- Optional AC power adapter available.

Zurn Electronic Faucets

ZURN ELECTRONIC FAUCETS



#80323 (Z6915)
4" Centerset



#81518 (Z6913)
Single Hole Faucet

#81076 (Z6913-CP4)
with 4" Plate

#80332 (Z6913-CP8)
with 8" Plate

These battery powered sensor faucets for retrofit and new construction incorporate an infrared convergence-type proximity sensor into the chrome plated cast brass spout. Furnished complete with sensor module, spout module, in-line filter, 4 AA batteries, a 1.5 GPM vandal resistant aerator and an inlet for a 1/2" ball riser supply hose. Sensor range is factory set for optimum performance.

ZURN AQUASENSE GOOSENECK FAUCET



#81728 (Z6920)
Deck Mounted

This faucet is a battery powered sensor faucet for retrofit and new construction. The faucet incorporates an infrared convergence type proximity sensor into the cast brass chrome plated base of the goose neck faucet. The faucet is furnished complete with sensor module, spout module and in-line filter, 4 AA batteries, a 1.5 GPM vandal resistant aerator, an inlet for a 1/2" ball riser and single supply hose. Sensor range is factory set for optimum performance.

ZURN ELECTRONIC FAUCET WITH MIXING VALVE



#83912 (Z6920-XL-CP4-MV)
1.5 GPM
4" Lav Faucet

Chicago Metering Faucets

4" METERED LAV FAUCET



#55065 (802-V665ABCP)

- Metering faucet
- 4" centers
- Self-closing push handles
- 4" spout
- 2.2 GPM Vandal proof aerator

4" METERMIX LAV FAUCET



#56401 (3600-E2805AB)

- Metering faucet
- 4" centers
- 5-5/8" CxC integral cast spout
- 0.5 GPM vandal proof non-aerating spray
- Flexible stainless steel supply hoses included

4" SINGLE SUPPLY METERING FAUCET



#84865 (3500-4E2805ABCP)

- Metering faucet
- 4" centers
- 4" CxC integral cast spout
- 0.5 GPM vandal proof non-aerating spray
- Flexible stainless steel supply hose included
- Single supply for tempered water

4" DUAL SUPPLY METERING FAUCET



#85535 (3501-4E2805ABCP)

- As above, with dual supply and less baseplate
- Optional 4" or 8" baseplate available separately

Sloan Electronic Faucets

SLOAN. BASYS FAUCETS

The ultimate versatility to meet the needs of any application or environment. All serviceable components are above deck and accessible with one tool.



#85683

(EFX 350-503-0000 CP)

- 1.5 GPM multi-laminar spray
- Double infrared sensors
- Battery operated (4 AA)
- Body type: low, single hole, integrated base
- Integrated side mixer
- Bowed crown



#83842

(EFX 650-000-0000 CP)

- 0.5 GPM multi-laminar spray
- Double infrared sensors
- Battery operated (4 AA)
- Body type: low, single hole, integrated base
- No mixer
- Bowed crown



#85532

(EFX 675-000-0000 CP)

- 0.5 GPM multi-laminar spray
- Double infrared sensors
- Solar powered
- Body type: low, single hole, integrated base
- No mixer
- Solar crown

Matches Soap Dispenser #16931



#84867

(EFX 250-000-0000 CP)

- 0.5 GPM multi-laminar spray
- Double infrared sensors
- Battery operated (4 AA)
- Body type: mid profile
- No mixer
- Bowed crown



#83845

(EFX 275-502-0200 CP)

- 1.5 GPM aerated stream (installed), or laminar spray (in box.)
- Double infrared sensors
- Solar powered
- Body type: mid profile
- Integrated side mixer
- Solar crown

4" LAVATORY FAUCET WITH BLUETOOTH TECHNOLOGY

SLOAN.



#55090

(EBF-650)



- Bluetooth Technology with wireless settings adjustments
- 0.5 GPM multi-laminar spray
- Vandal-resistant spray head
- Infrared sensor
- 4" Centerset
- Battery operated
- Back-check tee
- Cast-brass spout
- Quick connect fittings
- Integrated water shut-off
- Polished chrome finish
- ADA compliant
- 3-5/8" height

4" LAVATORY FAUCET WITH BLUETOOTH TECHNOLOGY

SLOAN.



#55115

(EBF85-4)



- Bluetooth Technology with wireless settings adjustments
- 0.5 GPM multi-laminar spray
- Vandal-resistant spray head
- Infrared sensor
- 4" Trim plate included
- Single hole mounting
- Battery operated
- Back-check tee
- Cast-brass spout
- Quick connect fittings
- Integrated water shut-off
- Polished chrome finish
- ADA compliant
- 5-3/4" height

8" LAVATORY FAUCET WITH BLUETOOTH TECHNOLOGY

SLOAN.



#55116

(EBF85-8)



- Bluetooth Technology with wireless settings adjustments
- 0.5 GPM multi-laminar spray
- Vandal-resistant spray head
- Infrared sensor
- 8" Trim plate included
- Single hole mounting
- Battery operated
- Back-check tee
- Cast-brass spout
- Quick connect fittings
- Integrated water shut-off
- Polished chrome finish
- ADA compliant
- 5-3/4" height

Sloan Electronic Faucets

4" BUDGET SENSOR FAUCET WITH INTEGRAL SPOUT



#58735 (SF-2350)

- 0.5 GPM
- Multi-laminar spray
- Back-check tee
- Infrared sensor
- Battery powered (4 AA included)
- 4-45/64" height

4" BUDGET SENSOR FAUCET



#58727 (SF-2150-4)

- 0.5 GPM
- Multi-laminar spray
- Back-check tee
- Infrared sensor
- Battery powered (4 AA included)
- 4-1/2" height

Matches Soap Dispenser #16930

OPTIMA SOLAR POWERED FAUCET



#58114 (EAF-275-ISM)

- 0.5 GPM
- Aerated flow
- Integrated side mixer
- Double infrared sensors
- Solar powered
- Includes 6V lithium battery backup
- 5-11/32" height

#58112 (EAF-275)

- As above, less mixer



#54676 (ETF-312-A)
4" Trim Plate



#52154 (ETF-510-A)
8" Trim Plate

Commercial grade faucet, solar powered, ADA compliant, cast brass, self-adapting sensor, water supply connection with flexible high-pressure hose and strainer. The **I.Q.-Click** feature permits activation of "continuous run" and "temporary off" modes.

Matches Soap Dispenser #16929

SENSOR ACTIVATED FAUCET WITH MIXER



#86899 (EAF-350-ISM)

- 1.5 GPM
- Aerated flow
- Integrated side mixer
- Double infrared sensors
- Battery operated (6V lithium CR-P2 included)
- 5-5/32" height

#86896 (EAF-350)

- As above, less mixer

Commercial grade, ADA compliant, cast brass, water supply connection with flexible high-pressure hose and strainer. The **IR-Click** feature permits activation of "continuous run" and "temporary off" modes.



#54676 (ETF-312-A)
4" Trim Plate



#52154 (ETF-510-A)
8" Trim Plate

OPTIMA I.Q. FAUCET WITH INTEGRAL SPOUT MIXER



#57130 (EAF150-ISM-IC)

- 1.5 GPM
- Aerated flow
- Integrated side mixer
- Double infrared sensors
- Battery operated (6V lithium 2CR5 included)
- Low battery indicator
- 6-7/8" height

Commercial grade, ADA compliant, cast brass, water supply connection with flexible high-pressure hose and strainer. The **I.Q.-Click** feature permits activation of "continuous run" and "temporary off" modes.



#58166 (ETF-607-A)
4" Trim Plate



#57131 (ETF-608-A)
8" Trim Plate

Sloan Electronic Faucets

OPTIMA GOOSENECK DECK MOUNT FAUCET WITH BLUETOOTH TECHNOLOGY



#53872 (EBF-750-4-BT)

- Bluetooth Technology with wireless settings adjustments
- 2.2 GPM
- Laminar flow
- Back check tee
- 4" trim plate
- Infrared sensor activated
- Battery operated
- 10-1/4" height

#53871 (EBF-750-8-BT)

- As above but with 8" trim plate

Commercial grade faucet, ADA compliant, cast brass spout, quick connect fittings, integrated water shut-off, wireless settings adjustment, on-demand or metered activation, hygienic line flush, water usage and battery strength reporting, self-adapting sensor.

OPTIMA GOOSENECK FAUCET WITH SURGICAL BEND



#82789 (EBF-750-S-H)

- Bluetooth Technology with wireless settings adjustments
- 1.5 GPM
- Shower spray head
- Surgical bend spout
- Back-check tee
- Infrared sensor activated
- Battery operated
- 12-1/4" height

Commercial grade faucet, ADA compliant, cast brass spout, quick connect fittings, integrated water shut-off, wireless settings adjustment, on-demand or metered activation, hygienic line flush, water usage and battery strength reporting, self-adapting sensor.

OPTIMA GOOSENECK BACK MOUNT FAUCET WITH BLUETOOTH TECHNOLOGY



#55152 (EBF-550)

- Bluetooth Technology with wireless settings adjustments
- 2.2 GPM
- Laminar flow
- Back check tee
- Infrared sensor activated
- Battery operated
- 14-1/4" height

Commercial grade faucet, ADA compliant, cast brass spout, quick connect fittings, integrated water shut-off, wireless settings adjustment, on-demand or metered activation, hygienic line flush, water usage and battery strength reporting, self-adapting sensor.

OPTIMA I.Q. GOOSENECK FAUCET



#84065 (EAF-750-ISM)

- 1.5 GPM
- Laminar flow
- Integrated side mixer
- Double infrared sensors
- Battery operated (8V lithium CR P2 included)
- Low battery indicator
- 10-1/32" height

Trim Plate Options:



#83827 4"

#81963 8"

Commercial grade, ADA complaint, cast brass gooseneck, modular one-piece construction with all concealed components above deck, water supply connection with flexible high-pressure hose and strainer. The I.Q.-Click feature permits activation of "continuous run" and "temporary off" modes.

Sloan Optimix™ Faucets

SLOAN®



OPTIMA® BATTERY-POWERED DECK-MOUNTED MID BODY FAUCET WITH OPTIMIX TECHNOLOGY



#48669 (EAF-250)
Multi-Laminar Spray
0.35 GPM

#48675 (EAF-250)
Aerated Spray
0.5 GPM

#48676 (EAF-250)
Laminar Spray
1.0 GPM

- Integrated Thermostatic Mixer
- Polished Chrome Finish
- Battery Power
- Infrared Sensor

What is Optimix™? Sloan's Optimix technology prevents scalding and is available on one of Sloan's most popular faucet designs. When cold water is running low, normal faucets may dispense uncomfortable or unsafe hot water. Sloan's new Optimix-enabled faucets offer the industry's fastest, most effective in-spout ASSE 1070 compliant anti-scald technology—even with a cold water failure. The Optimix technology is incorporated directly into the faucet spout. The simplified installation can reduce labor, time, and cost by up to 30%.

Anti-scald technology that fits anywhere.

Providing a safe water temperature is important anywhere, especially for schools, hospitals, and eldercare facilities. Sloan makes it easy to integrate Optimix™ anti-scald technology into new or retrofit projects. It's a simple way to keep users comfortable and safe with the durability and precision you expect from Sloan. The water is mixed as it passes through the spout of the faucet. The Integrated Thermostatic Mixing Valve can also be set to a desired temperature and removed for facilities where tamper resistance is required.

Features and Benefits

- Meets anti-scald requirements of ASSE 1070.
- Superior water temperature optimization even with cold water failure.
- Integrated Thermostatic Mixing Valve is included in the faucet spout for a hassle-free and time-saving installation.
- Mixer lever can be set to desired temperature and removed for tamper resistance.
- Available as hardwired or battery operated units, as well as the only solar-powered anti-scald faucet in the industry.
- Meets all US (UPC and IPC) plumbing code requirements.



*Hose Colors Shown
For Illustrative
Purposes Only*

Sloan Basys Faucet Repair Parts

CADDY ASSEMBLIES - BASYS FAUCETS

NOTE: YOUR SOLENOID CADDY MUST MATCH YOUR AERATOR FLOW RATE.



For Low Profile Faucets

#84103

(EFX-37-A)

0.5 GPM Solenoid
Green



For Medium Profile Faucets

#84741

(EFX-15-A)

0.5 GPM Solenoid
Green



For High Profile Faucets

#84743

(EFX-17-A)

0.5 GPM Solenoid
Green

#84104

(EFX-38-A)

1.5 GPM Solenoid
Blue

#84742

(EFX-16-A)

1.5 GPM Solenoid
Blue

#84744

(EFX-18-A)

1.5 GPM Solenoid
Blue

BASYS CROWN ASSEMBLIES

#84107

Bowed Crown Assembly

#84108

Solar Crown Assembly

#84109

Solar Crown with LCD Assembly

#84110

LCD Crown Assembly



BASYS TRIM PLATES



#84116

8" Trim Plate Kit



#84117

4" Trim Plate Kit

BATTERY HOLDERS - BASYS FAUCETS



#84106 (EFX-23-A)

Battery Pack
Includes 4 AA batteries
For Low Profile Faucets



#84740 (EFX-7-A)

Battery Pack
Includes 4 AA batteries
For Med. & High Profile Faucets

FAUCET MOUNTING KITS



#84113
For Single Hole Pedestal Model Only

Kit includes threaded rod, extended nut, o-ring, rubber washer, and c-clip.



#84114
For Integrated 4" Base Model Only

Kit includes 2 threaded rods, 2 extended nuts, 2 rubber washers, 2 metal washer and 4" center rubber plate.

BASYS AERATORS

#84766

Key only



#84100

0.5 GPM Multi-Lam Spray Head
Includes Insert, O-Ring, 2.5 mm Allen Key, and Removal Key

#84101

1.5 GPM Aerated Stream Insert
Includes Insert, O-Ring, 2.5 mm Allen Key, and Removal Key

#84102

1.5 GPM Laminar Stream Insert
Includes Insert, O-Ring, 2.5 mm Allen Key, and Removal Key

NOTE: IF CHANGING FROM 0.5 TO 1.5 OR 1.5 TO .5, YOU MUST REPLACE THE SOLENOID CADDY.

OTHER PARTS



#84115

13" Flexible Supply Hose

Sold Individually



#84112
Handle Cap



#84105
Strainer (Filter)
Sold in packs of 10



#84111

Mixer Handle Assembly

Sloan Electronic Faucet Repair Parts

FOR OPTIMA EBF-650, EBF-550, & EBF-750 SERIES

Before 2008



Control Module Assembly
#54325 (EBF60A)



Solenoid Replacement Kit
#54335 (EBF1011A)

FOR OPTIMA EBF-85 & EBF-187 SERIES

Before 2019



Solenoid Valve Module Assembly
#54003 (EBF-11-A)

SOLENOID FOR EAF FAUCETS



#58426
(EAF-2)

FOR OPTIMA EBF-600 SERIES

From 2008-2019



Control Module Assembly
#81785 (ETF-735A)



Solenoid Valve Assembly
#81784 (ETF740A)

FOR EBF & ETF FAUCETS

Since 2019



Control Box - No Turbine
#68746
(EFP-39-A)



Battery Pack
#84755 (EFX-8)

Includes batteries (4) and
1/8" short allen key

FOR OPTIMA ETF SERIES

Before 2019



Control Module Assembly
#08462 (ETF450A)



Solenoid Valve Assembly
#08367 (ETF370A)



Solenoid Assembly
#68778 (EFP-103)

Sloan Electronic Faucet Repair Parts

FOR OPTIMA EBF-650, EBF-550, & EBF-750 SERIES

Before 2008



Control Module Assembly

#54325 (EBF60A)

With Solenoid Body & Five Pin Connector

Uses Four "C" Batteries



Solenoid Replacement Kit

#54335 (EBF1011A)



Solenoid Filter Replacement Kit

#08578 (EBF1004A)

FOR OPTIMA EBF-85 & EBF-187 SERIES

Before 2019



Solenoid Valve Module Assembly

#54003 (EBF11A)



Solenoid Filter Replacement Kit

#08580 (EBF1001A)

For Old Solenoid before 2000

7/8" Diameter Filter



Solenoid Filter Replacement Kit

#08578 (EBF1004A)

FOR OPTIMA EBF-600 SERIES

From 2008-2019



Control Module Assembly

#81785 (ETF-735A)

- Uses four AA batteries
- Uses phone jack
- Old and new style are NOT interchangeable



Solenoid Valve Assembly

#81784 (ETF740A)

FOR OPTIMA EBF-85 SERIES

Before 2019

Optima Faucet Spout and Sensor Assembly

#53814 (EBF10A)



- Used with sensor activated lavatory faucets **#55115** and **#55116** (EBF-85)
- Battery powered
- Furnished with a black plastic throat plate

FOR OPTIMA EBF-650 SERIES

Optima Faucet Sensor Replacement Kit



#57970 (EBF80A)

• *Before 2008*

• Used on faucet **#55090**



#81783 (ETF749A)

• *From 2008-2019*

• Used on faucet **#55090**

• Uses phone jack connector

FOR OPTIMA ETF SERIES

Before 2019



Control Module Assembly

#08462 (ETF450A)



Solenoid Valve Assembly

#08367 (ETF370A)

FOR OPTIMA ELF-10, ESF-20, & ESF-30 SERIES



Solenoid Valve Assembly

#51804 (ETF1004A)

FOR OPTIMA ETF-660 & ETF-770 SERIES

Before 2019



Microphone Sensor

#52857 (EL3500A)

Sloan Bluetooth Faucet Repair Parts

CONTROL BOX WITH TURBINE 0.5 GPM

Since 2019



#68746

Box - No Turbine

#68747

Box Turbine 0.5 GPM

#68748

Box Turbine 1.5 GPM

FILTER PACK KIT

Since 2019

#68755

Includes one filter, five small o-rings, and five large o-rings.



CONTROL BOX COVER WITH SCREW

Since 2019



#68750

BATTERY PACK

Since 2019



#84755

Includes batteries (4) and 1/8" short allen key

DOUBLE INLET TEE FILTER ASSEMBLY

Since 2019



#68752

SOLENOID ASSEMBLIES

Since 2019



#68778



#68751

Sloan Electronic Soap Dispensers

SLOAN ESD-500 DECK MOUNTED SENSOR FOAM SOAP DISPENSER



#16931 (3346087)
Chrome Plated
Battery Powered

Matches BASYS faucets

SLOAN ESD-800 DECK MOUNTED SENSOR FOAM SOAP DISPENSER



#89279 (3346097)
Chrome Plated
Battery Powered

Matches EBF-85 and ETF-80 faucets

OPTIMA ESD-400 DECK MOUNTED SENSOR FOAM SOAP DISPENSER



#88957 (3346080)
Chrome Plated
Plug-In

Matches BASYS faucets

OPTIMA ESD-200/250 DECK MOUNTED SENSOR LIQUID SOAP DISPENSER



#16582 (3346052)
Chrome Plated
Less Transformer

#58995 (3346050)
Chrome Plated
Battery Powered

Matches EBF-85 and ETF-80 faucets

SLOAN ESD-1500 DECK MOUNTED SENSOR FOAM SOAP DISPENSER



#16928 (3346093)
Chrome Plated
Battery Powered

*Matches EAF-100 and
EAF-150 faucets*

SLOAN ESD-2100 DECK MOUNTED SENSOR FOAM SOAP DISPENSER



#16930 (3346098)
Chrome Plated
Battery Powered

*Matches SF-2100 and
SF-2150 faucets*

SLOAN ESD-2000 DECK MOUNTED SENSOR FOAM SOAP DISPENSER



#16929 (3346089)
Chrome Plated
Battery Powered

*Matches EAF-200, EAF-250,
and EAF-275 faucets*

FOAM HAND SOAP



Contains moisturizing ingredients
Glycerin, Aloe Vera and Vitamin E

#79172
Case of Four
38 Ounce Bottles

#79173
Case of Four
74 Ounce Bottles

ANTIBACTERIAL HAND SOAP



#79582
27 oz.

Electronic Soap Dispensers



HANDS FREE LAV MOUNTED SOAP DISPENSER

#15503



- Battery Operated
- Chrome Plated
- Controls soap use - Save \$\$\$
- Reduce labor - 1000 hand washes per refill
- Promotes cleanliness
- Three different soap options
- Fits existing opening in sinks



**LOTION SOAP W/ MOISTURIZER
#79034CS**

HANDS FREE SURFACE MOUNTED SOAP DISPENSER



#16407

34 fl. oz. Capacity



Chrome plated ABS plastic spout. Powered by 4 D-size batteries, not included. Translucent tank. LED indicates dispense activity and battery life.

Overall Size:
6-3/4" x 19-15/16"



HANDS FREE WALL MOUNTED SOAP DISPENSER

#17094

28 fl. oz. Capacity



White, high impact plastic, battery operated. Tamper-resistant soap level viewing window, swing open body with special lock and key. Powered by a 9V or 6AA batteries, not included.

Overall Size:
4-5/8" x 10-5/16" x 4-7/16"



HANDS FREE SURFACE MOUNTED SOAP DISPENSER

#16591

54 fl. oz. Capacity



Chrome plated brass on exposed surfaces. Powered by 4 D-size batteries, not included. Translucent tank. LED indicates function, battery condition, and soap level on front face.

Overall Size:
4" x 21-1/2"



HANDS FREE WALL MOUNTED SOAP DISPENSER

#16575

33.8 fl. oz. Capacity



Stainless steel, satin finish. Powered by 6 AA batteries, not included. Internal tank is translucent to show soap level. LED indicates function and operational condition.

Overall Size:
5-1/2" x 10-7/8" x 4"



HANDS FREE SURFACE MOUNTED SOAP DISPENSER

#16109

35 fl. oz. Capacity



Stainless steel, satin finish. Powered by 6 AA batteries, not included. Tamper-resistant soap level viewing window. Removable lid with special lock and key.

Overall Size:
4-7/16" x 9-1/4" x 4-7/8"



ANTIBACTERIAL SOAP

#81618

Case of 4
One Gallon Bottles

No-Touch Hand Dryers

TRIMDRY™ - QUIETDRY™ SERIES SURFACE MOUNTED ADA HAND DRYER

BOBRICK



White Epoxy



Brushed Stainless Steel

- Dry time – 17 seconds
- Automatic, no touch operation using an infrared sensor
- Steel construction with black plastic trim
- 71 dBA sound level
- ADA compliant
- Automatic thermal overload switch
- Dimensions: 13-25/32" W x 13-19/32" H x 4" D

115 Volt

#SP8848 (B-7120-115V) White Painted Cover

#16419 (B-7128-115V) Stainless Steel Cover

208 Volt

#SP8848-208V (B-7120-230V) White Painted Cover

#16419-208V (B-7128-230V) Stainless Steel Cover

SURFACE-MOUNTED AUTOMATIC HAND DRYER

(Budget)

BOBRICK



Pale Gray

- Automatic, no touch operation using an infrared sensor
- One-piece gray molded plastic cover
- Automatic thermal overload switch
- Dimensions:
10-13/16" W x 10-15/16" H x 5-3/16" D

115 Volt

#SP6264 (B-710) Pale Gray

XLERATOR® HAND DRYER



*Super-Fast Dry time!
Energy Efficient!*



White Epoxy



Graphite



Chrome Plated



Brushed Stainless Steel

- 8 second dry time
- Building Green Approved and Helps Qualify for several LEED® credits
- Automatic sensor operated activation
- Adjustable speed and sound control
- Adjustable heat control
- Visible service LED
- ADA compliant with Recess Kit
- Dimensions:
11-3/4" W x 12-11/16" H x 6-11/16" D

110/120 Volt

#15996 (XL-W-110/120) White

#16423 (XL-C-110/120) Chrome

#15997 (XL-GR-110/120) Graphite

#16424 (XL-SB-110/120) Brushed SS

208-277 Volt

#16425 (XL-W-208) White

#16426 (XL-C-208) Chrome

#16427 (XL-GR-208) Graphite

#16145 (XL-SB-208) Brushed SS

No-Touch Hand Dryers

HANDS OFF® AUTOMATIC HAND DRYER



White Epoxy



Chrome Plated

- Automatic, no touch operation using an infrared sensor
- Vandal resistant
- Dimensions - Surface Mounted:
12" W x 9-3/4" H x 8" D
- Dimensions - Recessed Mounted:
12-1/2" W x 9-3/4" H x 4" D

110/120 Volt

#16234	(HO-IW-110/120V)	White
#16234CP	(HO-IC-110/120V)	Chrome

SLOAN XLERATOR HAND DRYER

Super-Fast Dry Time!

SLOAN



White



Polished Chrome

- Dries hands in under 8 seconds
- Adjustable heat, speed, and sound
- Sensor operated
- Dimensions:
11-3/4" W x 12-11/16" H x 6-11/16" D

110/120 Volt

#16020	(EHD-501-WHT)	White
#16020CP	(EHD-501-CP)	Chrome

CLEAN DRY™ HIGH SPEED HAND DRYER

TOTO

#16097

Low Noise!



- Hygienic, hands-free, infrared sensor activated operation
- Sound level 57 dBA
- Very energy efficient
- Water tray to reduce slips and falls
- Dimensions:
9-5/8" W x 18-1/2" H x 9-3/4" D
- *No expensive heating element to replace*

WORLD DRYER AIRMAX™ SERIES

WORLD DRYER



- 15 second drying time
- Hands-free operation
- Vandal resistant
- 76 dBA sound level
- Dimensions:
11.3" W x 9.5" H x 8.33"D

115 Volt / 20 Amps

#SP10291	(XM5-974)	White (Cast Iron)
#16437	(DXM5-974)	White (Steel)
#16442	(DXM5-973)	Brushed Stainless Steel

208/230 Volt

#16432	(XM54-974)	White (Cast Iron)
#16438	(DXM54-974)	White (Steel)
#16443	(DXM54-973)	Brushed Stainless Steel

HANDS-FREE TOWEL DISPENSER

#15678



- Dispenses most non-perforated roll towels up to 8" in diameter and 8" wide.
- Autocut mechanism provides user with an 11" sheet.
- Also features an emergency paper feed.
- Transfer system allows complete usage of stub rolls up to 2-3/4" diameter.
- 20 gauge steel back with transparent cover.
- Uses four D batteries

Elkay Retrofit Bottle Fillers

EZH2O® RETROFIT BOTTLE FILLING STATION - FILTERED

#83462 (LZWSRK)

ELKAY



- Sanitary, no-touch sensor activation.
- Fill rate is 1.5 GPM.
- Non-refrigerated
- LED filter status indicator
- Silver antimicrobial protection on key plastic components inhibits the growth of mold and mildew.

EZH2O® RETROFIT BOTTLE FILLING STATION - NON-FILTERED

#86394 (EZWSRK)

ELKAY



- Retrofits to select Elkay **PUSH BAR** drinking fountains
- Sanitary, touchless activation with auto 20-second shut-off
- Integrated Silver Ion Anti-microbial Protection in key areas
- Quick Fill Rate: 1.1 GPM when connected to refrigerated EZ models, 1.5 GPM for non-refrigerated connections
- Laminar flow provides minimal splash
- Visual user interface includes Innovative Green Ticker™ which counts bottles saved from waste

*The above retrofits do NOT come with bubblers.
However, if you need a new bubbler, order the one below.*



BUBBLER FOR ELKAY

#05793 (92715C)

HYDROBOOST RETROFIT BOTTLE FILLER - FILTERED

#67726 (HTHB-HAC-RF)

- Retrofits existing HAC 115V style coolers.



Halsey Taylor



- Sanitary, touchless activation
- Integrated Silver Ion Anti-microbial Protection in key areas
- Fill rate is 1.5 GPM.
- Visual filter monitor with LED filter status indicator
- Green Counter™ shows number of 20 oz. plastic water bottles saved from waste.
- Laminar flow provides minimal splash.
- Real drain system eliminates standing water.



HYDROBOOST RETROFIT BOTTLE FILLER - NON-FILTERED

#86468 (HTHB-HAC-RF-NF)



Halsey Taylor



- Retrofits existing HAC 115V style coolers.
- Sanitary, touchless activation
- Integrated Silver Ion Anti-microbial Protection in key areas
- Fill rate is 1.5 GPM.
- Green Counter™ shows number of 20 oz. plastic water bottles saved from waste.
- Laminar flow provides minimal splash.
- Real drain system eliminates standing water.



*The above retrofits do NOT come with bubblers.
However, if you need a new bubbler, order the one below.*



BUBBLER FOR HALSEY TAYLOR

#87315 (98533C)

ELKAY BUBBLER CAP KIT

#48304

Used for capping the bubbler
on Elkay fountains.
Use with part #48194



ELKAY GLASS FILLER CAP

#48194

Covers bubbler or glass filler hole
Use with part #48304



Elkay Surface Mounted Bottle Fillers

NON-REFRIGERATED BOTTLE FILLER

ELKAY



#67020 (EMASM)

- Stainless Steel Finish
- Non-Refrigerated
- Mechanical push button activation, great for limited wall depth applications where electricity is not available
- Laminar flow provides minimal splash
- Real Drain System eliminates standing water
- Fill Rate: 1.0 GPM
- Silver antimicrobial protection on key plastic components inhibits the growth of mold and mildew
- Can be paired with a remote chiller

FILTERED NON-REFRIGERATED WALL MOUNTED BOTTLE FILLER

ELKAY



#89288 (LZWSR)

- LED filter status indicator
- Non-Refrigerated
- Innovative Green Ticker™ counts bottles saved from waste
- Laminar flow provides minimal splash
- Fill Rate: 1.5 GPM
- Silver antimicrobial protection on key plastic components inhibits the growth of mold and mildew
- Can be paired with a remote chiller

FILTERED NON-REFRIGERATED BOTTLE FILLER

ELKAY



#48206 (LMASMB)

- Includes filter
- Stainless Steel Finish
- Non-Refrigerated
- Mechanical push button activation, great for limited wall depth applications where electricity is not available
- Innovative Green Ticker™ counts bottles saved from waste
- Laminar flow provides minimal splash
- Fill Rate: 1.5 GPM
- Silver antimicrobial protection on key plastic components inhibits the growth of mold and mildew
- Can be paired with a remote chiller

FILTER REPLACEMENT FOR BOTTLE FILLERS



#84553E (51300C)

Single Filter – 3000 Gallons
For EZH2O Bottle Fillers
w/ Watersentry®

#SP5866 (51299C)

2 Pack – 1500 Gallons
For EWF172 Watersentry® 6000

HANDS FREE NON-REFRIGERATED BOTTLE FILLER

ELKAY



#87679 (LZWSSM)

Filtered

#47899 (EZWSSM)

Non-Filtered

- LED filter status indicator on #87679
- Stainless Steel Finish
- Non-Refrigerated
- Innovative Green Ticker™ counts bottles saved from waste
- Laminar flow provides minimal splash
- Fill Rate: 1.5 GPM
- Silver antimicrobial protection on key plastic components inhibits the growth of mold and mildew
- Can be paired with a remote chiller

REMOTE CHILLER FOR DRINKING FOUNTAIN

ELKAY



#SP7821 (ECH8)

- Delivers 8.0 gallons of chilled drinking water per hour
- Converts any drinking fountain into a water cooler
- Provides cool water for most two station applications
- Dimensions: 17-3/8" x 13-1/4" x 10-1/4"

Other Types Available. Call For Assistance!



**OUTDOOR
BOTTLE FILLERS
AVAILABLE
ON REQUEST!!**

Oasis Retrofit Bottle Fillers

FILTERED HANDS FREE VERSAFILLER BOTTLE FILLER RETROFIT KIT



#03535 (PWEBF)

Filter Sold Separately

- Retrofits either the P8AC or P8AM
- Sensor activated
- Integrated back-lit bottle counter
- Built-in filter monitor (Filter not included)
- Waterways are lead-free in materials and construction
- Heavy duty steel frame
- Surface mount frame assembly
- VersaFiller alcove contains Freshield®, which utilizes a silver-based antimicrobial compound that reduces the growth of microorganisms and mildew.
- ADA compliant when properly installed
- Brushed stainless steel finish

PUSH BUTTON ACTIVATED BOTTLE FILLER RETROFIT KIT

As above, but MANUALLY activated

#03575 (PWSBF)

ELKAY NEW STYLE VERSAFILLER RETROFIT GASKET

Used to fit the #03535 (above) onto EZ/LZ Elkay water coolers



#47149

LOCKOUT KIT FOR DRINKING FOUNTAIN



#39047E

#39047
Package of Six

- Covers the spout of most drinking fountains to prevent use, and keep hands off of a high-touch area.
- Keeps the water flowing on bottle-filling stations connected to the fountain.
- Fits most bubblers up to 2-1/8" in diameter and 4-1/8" tall
- Will not fit Oasis 05624, 05624PL, 55418, 56065 bubblers

K-12 RETROFIT BOTTLE FILLER



#46739 (PWFSBF-K12)



Filter can be changed easily!



- Comes with certified 3000 gallon lead reduction filter that treats water for the bottle filler and fountain
- Large 13" alcove fits most large sports water bottles
- Cabinet won't rust or dent
- Mechanical activation button dispenses water even during a power outage
- Large antimicrobial copper push button is easy to push and reduces the transfer of pathogens
- Filter is mounted inside the bottle filler for easy access and replacement
- Filter can be accessed easily by only having to remove 2 screws (instead of 8)
- Bottle filler is ADA compliant when retrofitted onto PG8AC or P8AM units
- Can be retrofitted onto ADA drinking fountains as far back as 1995

REDUCING UNION

#81749



John Guest Quick Connect Fitting
Tube OD: 3/8 x 1/4

1/4 INCH LINE CAP

#48292



John Guest Quick Connect Fitting
used to block the waterline to bubbler

BUBBLER HOLE COVER

#48278



Designed to fit Oasis VersaFiller Units.

Oasis Surface Mounted Bottle Fillers

HANDS FREE FILTERED BOTTLE FILLER WITH CHILLER



#47139 (MWSM8EBF)



- Includes Filter
- Stainless Steel Finish
- Delivers 8.0 GPH of chilled drinking water
- Built-in 100 micron strainer stops particles before they enter the waterway
- Waterways are lead-free
- Heavy-duty steel frame
- Sensor-Activated
- ADA Compliant
- Silver-based antimicrobial compound reduces the growth of microorganisms and mildew
- Basin designed to eliminate splashing and standing water
- Built-in Bottle Counter & Filter Monitor

HANDS FREE FILTERED BOTTLE FILLER



#86632 (PWSMSBF)



- Stainless Steel Finish
- Built-in 100 micron strainer stops particles before they enter the waterway
- Waterways are lead-free
- Heavy-duty steel frame
- Mechanically activated push button
- Non-Refrigerated
- ADA Compliant
- Silver-based antimicrobial compound reduces the growth of microorganisms and mildew
- Built-in drain, no drip tray to empty
- No electricity required
- Can be paired with a remote chiller

WATER CHILLER

• Lead-free • Heavy Gauge Steel • Refrigerant r-134a



#SP3119 (R8)



- Delivers 8.0 or 12.0 gallons of chilled drinking water per hour, respectively
- Designed for remote or in-a-wall installation
- Shelf support, wall mounting cradle and stainless steel ventilating grille at extra cost
- Dimensions:
16" x 16-13/32" x 10-5/16"

Murdock Bottle Fillers

NON-FILTERED MANUALLY ACTIVATED BOTTLE FILLER



#66740 (BF1S)



- Manually operated bottle filler
- Fill rate: 1 GPM
- Designed for Murdock A171 or A111 water coolers
- ADA compliant
- 18 Gauge 304 stainless steel construction

OUTDOOR HANDS-FREE BOTTLE FILLER



#66507 (M-OBF4)



- 100 Mesh Inlet Strainer
- Hands Free Sensor Operation
- Can also be activated by push-button
- All Stainless Steel Construction
- Battery Pack 6 AA
- Laminar Flow Water Supply
- Lead and Cyst Filter
- Meets ADA Forward and Side Reach Requirements

This outdoor bottle filler is activated by a 9-volt sensor or the push-button. Supplied with a 100 mesh inlet strainer, lead and cyst filter, 6-AA battery pack, and laminar flow spout. Construction is heavy gage, all stainless steel. Pedestal base of bottle filler has four mounting holes. Access covers are secured with vandal-resistant stainless steel screws. A self-closing push-button, needing less than 5 pounds force, shall activate an internally mounted valve. Unit is certified to meet NSF/ANSI 61, Section 9, Public Law 111-380 (No-Lead) and CHSC 116875.

Elkay Drinking Fountain Repair



PLASTIC CARTRIDGE WITH SPRING

#56005 (61314C shown)
For Cooler w/ Push Bar

#56005R (61313C)
For Cooler w/ Push Button



PLASTIC CARTRIDGE FOR SOLENOID

#82678 (66654C)



SOLENOID VALVE

#05901 (35981C)
For Old Style EZ-Series
manufactured prior to July 2008



SOLENOID VALVE WITH CARTRIDGE

#84663 (98466C)
For New Style EZ-Series
manufactured after July 2008



PUSH BUTTON ASSEMBLY

#83743 (98536C)
For NON ADA Coolers



REGULATOR & HOUSING KIT

#87082 (98733C)



REGULATOR & HOUSING KIT WITH RED SPRING

#85345



REGULATOR & HOUSING KIT WITH GREEN SPRING

#87081 (98732C)

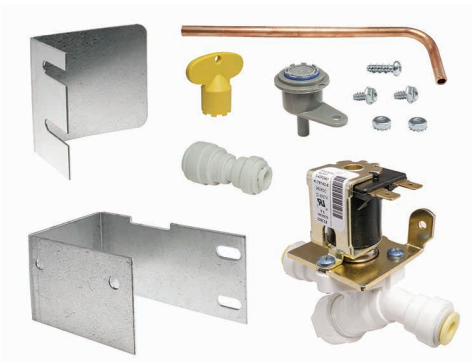
ELECTRICAL SWITCH FOR FOUNTAIN



#40700081 (98869C)

BOTTLE FILLER SOLENOID KIT

#84773 (98545C)



COLD CONTROL FOR WATER COOLER



#56037 (31513C)

IN-LINE STRAINER FOR FOUNTAIN



#56010 (55996C)
Has push fittings on both sides.
One side 1/4", the other 3/8"

Oasis Drinking Fountain Repair

SOLENOIDS FOR FOUNTAIN



#81212
(029819-001)



#81193
(029819-002)

NO-LEAD FOUNTAIN STEM ASSEMBLY

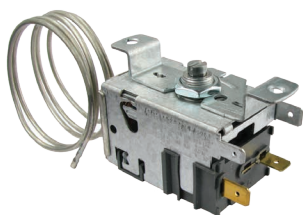


#05615 (013059-005)
Use w/ SP3094 wheel arm.
For stem and body
assembly, use #05857.



**NO-LEAD FOUNTAIN
STEM & BODY**
#05857 (032046-001)

COLD CONTROL FOR WATER COOLER



#05912
(027040-39)
Used in P8AC Units

OASIS OEM FOUNTAIN CARTRIDGE

#57997
(029967-005)



UNIVERSAL CARTRIDGE

#05605



LOCKOUT KIT FOR DRINKING FOUNTAIN



#39047E
#39047
Package of Six

- Covers the spout of most drinking fountains to prevent use, and keep hands off of a high-touch area.
- Keeps the water flowing on bottle-filling stations connected to the fountain.
- Fits most bubblers up to 2-1/8" in diameter and 4-1/8" tall
- Will not fit Oasis 05624, 05624PL, 55418, 56065 bubblers

BUBBLERS



#05624 (030774-016)
Chrome Plated Brass
Water Bubbler
(DIAL-A-DRINK BUBBLER)



#05624PL (030774-006)
Water Bubbler with
Plastic Cover and Flex Guard
(DIAL-A-DRINK BUBBLER)

Water Cooler Filters

FILTER REPLACEMENT FOR EZH2O BOTTLE FILLERS WITH WATERSENTRY®

ELKAY



#84553 (51300C)
Pack of 3

#84553PK
(51300C-12PK)
Pack of 12

- 3000 gallon capacity
- Reduces lead, class 1 particulates, chlorine, taste and odor.

FILTER IN-LINE REPLACEMENT FOR LF2

ELKAY



#88497 (56192C)

FILTER CARTRIDGE FOR EZ CLIP

OASIS



#86163
(034763-215)

EZ TURN GREEN RETRO FILTER SYSTEM

OASIS



- Replace your existing filter with a simple push-into-place.
- Easy to install
- Easy to maintain
- Superior water quality
- Customizable
- Eco-friendly
- Economical

#03582

(033926-003)
Used on P8AM, P8AC

#03583

(033926-004)
Used on all models
(Universal bracket)

Compatible with most under sink filtration systems, coffee machines, refrigerators, drinking fountains, and POU water coolers.

RETRO FILTER KIT PRESSURE COOLER (VERSAFILTER)

OASIS

Used on all models
(Universal bracket)



#88777
(033926-002)

FILTER REPLACEMENT WATERSENTRY® FRESH 6000 CTO (2PK)

ELKAY



#88778
(WSF6000R-2PK)

FILTER KIT FOR SENTRY V & VII

ELKAY



#SP5865
(EWF172)

FILTER KIT FOR EZH2O BOTTLE FILLERS

ELKAY



#87248 (EWF3000)

**Make Sure Your Drinking
Fountain Water is Safe!
Use Filters on ALL of Your
Fountains and Bottle Fillers!**

EZ TURN GREEN REPLACEMENT CARTRIDGE ONLY

OASIS



- Removes chlorine, taste, and odor
- 1000 gallon capacity

#03584 (034763-205)

RETRO FILTER KIT (VERSA) FOR P8AM & P8AC

OASIS



#86164
(033926-001)

REPLACEMENT FILTER FOR VERSAFILTER

OASIS



- For taste, odor, lead, and chlorine reduction.
- 1500 gallon capacity

#59867
(033879-001)

EZ CLIP FILTER KIT FOR IN-LINE FILTRATION

OASIS



#86162
(033926-005)

Signs

PLEASE WAIT HERE



#SP17919

Adhesive Backed Vinyl
12" x 12"

#SP17921

TexWalk
11.75" x 11.75"

#SP17920

Pressure Sensitive
Removable Vinyl
12" x 12"

PLEASE PRACTICE SOCIAL DISTANCING



#SP17922

Adhesive Backed Vinyl
12" x 12"

#SP17924

TexWalk
11.75" x 11.75"

#SP17923

Pressure Sensitive
Removable Vinyl
12" x 12"

PLEASE PRACTICE SOCIAL DISTANCING



#SP17925

Adhesive Backed Vinyl
8" H x 20" W

#SP17927

TexWalk
7.63" H x 19.63" W

#SP17926

Pressure Sensitive
Removable Vinyl
8" H x 20" W



#17079

10 x 14 Rigid Plastic



#17081

10 x 14 Rigid Plastic

SIGNS



#17082

10 x 14 Rigid Plastic



#17086

10 x 14 Rigid Plastic



#17080

10 x 14 Poster Paper



#17085

24 x 18 Poster Paper



#17083

18 x 24 Poster Paper



#17084

18 x 24 Poster Paper

Sloan Mobile Hand Washing Station

Bringing Hand Washing Out of the Restroom to Wherever It's Needed



Enable more convenient hand washing options for your facility with the new Sloan® Mobile Hand Washing Station. Their latest touch-free innovation can be placed anywhere in the building, bringing hand hygiene beyond the restroom.

This Mobile Hand Washing Station comes with multiple options to fit both indoor and outdoor applications. Use near entrances or exits, food courts, cafeterias, concourses, concessions, escalators, hallways, and much more.

All stations include AC or DC powered unit and 16 gallon gray water tank. Hot water heater and holder for two 5 gallon water jugs (jugs not included) available on select models.

Note: cabinet front removed for illustration purposes only.



MOBILE HAND WASHING STATIONS WITH WATER LINE CONNECTION

The stations below require connection to a standard 3/4" water line and drain line for gray water.



#48648

- SF-2250 sensor-operated faucet
- Stainless steel counter
- Stainless steel drop-in sink



#48649

- SF-2250 Sensor-operated faucet
- Stainless steel counter
- Stainless steel drop-in sink
- Hot water heater



#48650

- Stainless steel hood for outdoor use
- EFX-150 Basys sensor-operated faucet
- Stainless steel counter
- Stainless steel drop-in sink
- Hot water heater

MOBILE HAND WASHING STATIONS BATTERY OPERATED

The stations below are powered by a rechargeable battery and allow for freshwater and gray water storage for stand-alone use with no plugin or plumbing required. Also included are water and drain lines for connected use.



#48646

- SF-2250 sensor-operated faucet
- Corian® sink deck
- Vitreous china undermount bowl



#48647

- EFX-150 Basys Sensor-operated faucet
- Stainless steel counter
- Stainless steel drop-in sink

Hand Washing Station

EZ WASH-N-GO HAND WASHING STATION

Wash Your Hands Without Entering a Restroom!

Introducing Murdock's latest product, the EZ Wash-N-Go Hand Washing Station! It was designed to be quickly and easily retrofitted where pre-existing water fountains are. The station provides access to a hand washing experience outside of restrooms in schools, offices, public locations, and more!

Made of a durable stainless steel, this station is ideal for those high traffic areas, and allows for it to be quickly cleaned and sanitized.

The sensor-operated "J" Spout is constructed from 304 stainless steel. The basin is also constructed in stainless steel and has an integral drain. Unit is powered by either a 9V DC battery or a plug-in transformer. The rear alcove splash guard helps to reduce splash and keep liquids contained. It is made of an antimicrobial, impact-resistant ABS.

Station is ADA compliant when mounted at the instructed height.



#48400 (A171100W)

Gray Powder Coat Finish

#48401 (A171100W-PS)

Gray Powder Coat Finish
With 34 oz. Soap Dispenser

#48400SS (A171400W)

Satin Stainless Steel Finish

#48401SS (A171400W-PS)

Satin Stainless Steel Finish
With 34 oz. Soap Dispenser

Features:

- 0.5 GPM Multi-Stream Laminar Flow
- Universal Mounting Bracket
- Sensor Operated "J" Spout
- Alcove Backsplash
- 9V Battery or Plug-in Transformer
- Rough-Ins Match Other Water Cooler Manufacturer's for Easy Retrofit
- Optional Tankless Water Heater

Safety

STEP-N-PULL® HANDS FREE DOOR OPENER

Enter or exit the room without touching the door handle! Great for restrooms. No touch!

#37663



- Reduce the spread of germs.
- Reduce or eliminate paper towel expense/usage.
- Perfect compliment to automatic hand dryer.
- Low one-time cost - Designed to last the life of the door.
- Works great on commercial latchless doors (i.e. entry door of a laundromat or auto parts store) **when the users hands are full.**

SAFE DISTANCE THERMOMETER

#39023



- Measuring Distance: 25/64" to 1-3/16"
- Measuring Range: 32° to 212° F
- Dual Mode - Can be flipped from Celsius to Fahrenheit
- Measuring time: ≤ 2 seconds
- Automatic Power-Off: ≤ 18 seconds
- Weight: 3.04 oz. without batteries
- Size: 5-7/16" L x 3-3/4" W x 1-9/16" H
- Requires (2) AAA batteries, **#32737**, not included

CIVIL USE PROTECTIVE MASK

#39014

Box of 50



Made of 3 layers of non-woven cloth, 3rd layer being BFE/PFE. Has adjustable nose piece and elastic earloops.

MAGNETIC DOOR BARRIERS

CLOSED FOR MAINTENANCE ~

#38559 Yellow - 51"

Bi-Lingual: English & Spanish

CLOSED FOR MAINTENANCE

#38554 Orange - 36"

CLOSED FOR CLEANING

#38558 Yellow - 36"

#39009 Yellow - 51"

Says "Cleaning in Progress"

STOP ~ DO NOT ENTER

#38560 Red - 36"

#39008 Red - 51"

This Room Has Been Cleaned & Disinfected ~ Just For You!

- Lightweight and easy to use
- Exceptionally strong magnets attach in seconds
- Made with durable, rot-resistant nylon
- Fits standard 36" metal door frames

BLOCK-AIDE - FOR RESTROOM STALL

#16764

4-5/8" H x 3" W x 1-1/2" D



- Made of ABS resin.
- Resists chipping and cracking
- Fits most partition doors.

This clever item slides down between the pilaster and partition door to lock patrons out of a stall that is out of service. It's an effective, sanitary, and more attractive way to keep people out of a stall without them seeing why it is out of service.

**A Quick and Innovative Way to
Temporarily Close Off a Room or Space**



#39013 White - 51"



American Standard



ARMSTRONG

"Apollo"

ASI AMERICAN SPECIALTIES, INC.

ASI Global Partitions



BEMIS

BOBRICK

Bradley

BRIGGS



Central Brass

CHAN NEL LOCK



CHICAGO FAUCETS

Church.
The Best Seat in the House®

dahl
brothers canada limited
Est. 1952

DELTA

DELTANA
Architectural Hardware

Dormont

DURHAM
MANUFACTURING

ELKAY

Fernico
Inc.

Fluidmaster

FLUSHMATE®
A Division of Sloan Valve Company

General
PIPE CLEANERS

GERBER

GENERAL
PARTITIONS
Mfg. Corp.



Halsey Taylor

Haws



John Guest

JSC
Jones Stephens Corp.

KOHLER

LEGEND
VALVE

LEONARD
WATER TEMPERATURE CONTROLS



Metcraft
INDUSTRIES INCORPORATED

MIFAB

MOEN



NGP National Guard Products, Inc.

NEOPERL®
flow, stop and go®

OASIS

PASCO

POWERS
A WATTS INDUSTRIES CO.

RIDGID

SCRANTON
PRODUCTS
DESIGNED TO BE WORRY-FREE



SPEAKMAN

SLOAN

SYMMONS®
the smart choice™



TMS
TOTAL MAINTENANCE SOLUTIONS

TOTO



WATCO
Always A Step Ahead

WILKINS

WATTS

WILLOUGHBY



ZURN



That Hard To Find Part is Right Here!

SINCE 1968

- 
- **TMS Affiliated**
 - **Millions of Parts in Stock**
 - **Exceptional Service**
 - **Genuine Replacement Parts**

For over 50 years, Equiparts has been supplying a complete line of plumbing and maintenance specialties to commercial and institutional customers. Our specialty is hard to find parts. In addition, we are committed to delivering the highest level of professional service. The Equiparts team is comprised of educated product specialists with unparalleled knowledge and technical expertise.

120 Pennsylvania Ave.
Pittsburgh, PA 15139

Pittsburgh: 412-781-9100
Toll Free: 800-442-6622
Fax: 412-781-3085



TOTAL MAINTENANCE SOLUTIONS

www.equiparts.net

