

FITNESS CATALOG

Fitness Clubs • Gyms • Yoga Studios • Spas • Locker Rooms



- **Plumbing Repair**
- **Drinking Fountains**
- **Flushometers**
- **Shower Room Repair**
- **Faucet Repair**
- **Washroom Accessories**
- **Toilet Partitions**
- **Hardware**
- **Chemicals**
- **Tools**
- **Safety Items**
- **and more!**



Hands-Free Solutions



Call Us For Technical Assistance!

Toll Free: 800-442-6622 • Pittsburgh: 412-781-9100 • Fax: 412-781-3085

www.equiparts.net • www.equipartsdrinkingfountains.com

Equiparts is a Master Distributor for:

*American
Standard*

**CHICAGO
FAUCETS®**
Geberit Group

BOBRICK
WASHROOM ACCESSORIES

ELKAY®

 **MOEN®**

POWERS™
A **WATTS** Brand

 **SYMMONS®** **SLOAN®**

OASIS™

T&S®

TOTO®

 **WATTS®**

 **ZURN™**

By partnering with some of the most respected brands in the industry, Equiparts not only has many of their parts and units in stock and ready to ship, we also have extensive knowledge of those products to help you with your selection. When it comes to personalized service and technical support, no one beats Equiparts. If you have any questions, or would like to set up an account, give Equiparts a call today!

CONTENTS

Aerators	70-71	Miscellaneous	65
American Standard	22, 35, 72-73	Moen	17, 23
Augers	26, 28	Oasis Fountain Repair	50
Bit Kits	32	Oasis Units	51
Blue Monster	65	P-Traps	42
Bottle Fillers	48-49, 51	Partitions & Partition Repair	54-65
Cache Aerators & Kits	71	Pipe Repair	43
Chemicals	64, 67	Plumbing	42-43
Chicago Faucet	16, 18-19, 22	Plungers	26, 28
Closets	72, 74	Restroom Accessories	38-40
Closet Repair	67-69	Safety	78
Corner Guards	80	Screwdrivers	30-32
Delta	22	Shower	35-40
Dispensers (<i>toilet paper, soap, etc.</i>)	39-40	Sinks	75
Door (<i>misc.</i>)	34, 78-80	Sloan Basys & Optima Faucets	12
Door Closers	78	Sloan China	74-76
Door Pull	80	Sloan Electronic Faucet Parts	13-15
Door Stops	28, 81	Sloan Electronic Faucets	12
Drain Cleaning	26, 28, 67	Sloan Flushometers & Repair Parts	3-8
Drinking Fountain Repair	45-47, 50	Sloan Urinals	76
Elkay Bottle Fillers	48-49	Soap Dispensers	39
Elkay Repair	45-47	Speakman	23
Faucet Repair	13-15, 18-25	Stems & Cartridges	22-25
Faucets	12, 16-21	Strainers	41
Filters (<i>for bottle fillers</i>)	48	Symmons	24
Fire Safety	77	T&S	24-25
Flushometer Parts and Units	3-11	TC	25
Gaskets	66-69	Toilets	72, 74
Gloves	78	Toilet Seats	68
Goggles	78	Toilet Paper Dispensers	39
Grab Bars	38	Tools	26-33
Grates	41	Towels (<i>for cleaning</i>)	65
Hand Dryers	40	Tubular	42
Hardware	78-80	Urinal Repair	66-67
Hooks	38	Urinals	73
Hydrant Repair	65	Wax Rings	66, 68-69
Kick Plates	80	Zurn Electronic Faucets & Repair	17, 20-21
Kohler	23, 66	Zurn Faucet Repair	20-21, 25
Megapro Drivers	31	Zurn Flushometers	11
Mirrors	40	Zurn Flushometer Repair Parts	9-11

SLOAN FLUSHOMETERS & PARTS

ROYAL FLUSHOMETERS



#08041 (110)
Closet - 3.5 GPF

1-1/2" Vacuum Breaker, 1" Stop

#08330 (111)
Closet - 1.6 GPF

Low Consumption
1-1/2" Vacuum Breaker, 1" Stop

#08094 (111-1.28)
Closet - 1.28 GPF

Low Consumption
1-1/2" Vacuum Breaker, 1" Stop

#08042 (186)
Urinal - 1.5 GPF

3/4" Vacuum Breaker, 3/4" Stop

#08331 (186-1)
Urinal - 1.0 GPF

Low Consumption
3/4" Vacuum Breaker, 3/4" Stop

#08845 (186-0.5)
Urinal - 0.5 GPF

3/4" Vacuum Breaker, 3/4" Stop

#85405 (186-0.25)
Urinal - 0.25 GPF

3/4" Vacuum Breaker, 3/4" Stop

#85400 (186-0.13)
Urinal - 0.13 GPF

3/4" Vacuum Breaker, 3/4" Stop



COMPLETE ROYAL OPTIMA PLUS HANDS FREE FLUSH VALVE WITH MANUAL OVERRIDE

#08402 CLOSET - 1.6 GPF

1-1/2" Vacuum Breaker, 1" Stop

G2 METAL COVER WITH OVERRIDE



#08701

Does **NOT** Include Locking Ring



#08421

Chrome Locking Ring for Cover

REGAL FLUSHOMETERS (Economy)



#08428 (110XL)
Closet - 3.5 GPF

1-1/2" Vacuum Breaker, 1" Stop

#08480 (111XL)
Closet - 1.6 GPF

Low Consumption
1-1/2" Vacuum Breaker, 1" Stop

#08449 (186XL)
Urinal - 1.5 GPF

3/4" Vacuum Breaker, 3/4" Stop

#08455 (186-1XL)
Urinal - 1.0 GPF

Low Consumption
3/4" Vacuum Breaker, 3/4" Stop

#81296 (186.05XL)
Urinal - 0.5 GPF

Low Consumption
3/4" Vacuum Breaker, 3/4" Stop



SLOAN ECOS DUAL-FLUSH CLOSET RETRO KIT

#08923

- Full Flush (Solids) 1.6 gpf
- Reduced Flush (Liquids) 1.1 gpf
- Intuitive Dual-Flush Operation
- Ground-Breaking Water Efficiency
- Automatic or Manual Operation



SLOAN SOLIS FLUSH RETRO KIT

Solar Powered

Uses light from restroom to charge a highly efficient capacitor.



#83079
1.6 or 3.5 GPF
Closet Retro Kit

#83083
1.0 or 1.5 Gpf
Urinal Retro Kit



HANDS FREE SLOAN G2 RETRO KIT

#08700

Closet 3.5 or 1.6 GPF

#08800

Urinal 1.5 or 1.0 GPF

SLOAN REPAIR PARTS

SPUD ASSEMBLIES

Cast Brass!



#08023 1-1/2"

#08024 1-1/4"

#08025 3/4"

EQUIPARTS DIAPHRAGM KITS

Regal / Royal

Just Drop In !



#08573

0.5 GPF - URINAL
Green Relief Valve

#08115

1.0 GPF - URINAL
Green Relief Valve

#08001

1.5 GPF - URINAL
Black Relief Valve

#08114

1.6 GPF - URINAL
Green Relief Valve

#08571

2.4 GPF - CLOSET
Blue Relief Valve

#08000

3.5 GPF - CLOSET
White Relief Valve

#08057

4.5 GPF - CLOSET
For Old Style
White Relief Valve

Royal Dual-Filtered By-Pass



#83612

0.125 GPF - URINAL
Dual Filtered By-Pass
Blue Relief Valve

#82110

0.25 GPF - URINAL
Dual Filtered By-Pass
White Relief Valve

#08566

0.5 GPF - URINAL
Dual Filtered By-Pass
Green Relief Valve

#08565

1.0 GPF - URINAL
Dual Filtered By-Pass
Green Relief Valve

#08562

1.5 GPF - URINAL
Dual Filtered By-Pass
Black Relief Valve

#08937

1.28 GPF - CLOSET
Dual Filtered By-Pass
Blue Relief Valve

#08564

1.6 GPF - CLOSET
Dual Filtered By-Pass
Green Relief Valve

#08752

2.4 GPF - CLOSET
Dual Filtered By-Pass
Blue Relief Valve

#08563

3.5 GPF - CLOSET
Dual Filtered By-Pass
White Relief Valve

HANDS FREE DIAPHRAGM KITS

Includes 4 AA Batteries

FOR G2, ECOS and SOLIS



#85629

0.125 and 0.25 GPF - URINAL

#08695

0.5 GPF - URINAL

#08137

1.0 and 1.5 GPF - URINAL

#83565

1.28 - CLOSET

#08285

1.6 and 3.5 GPF - CLOSET

#08710

2.4 GPF CLOSET OR URINAL



VACUUM BREAKER & HANDLE PARTS



#08007 (B50A)
Handle Kit



#08012
(V551A)
Standard



#08438
(V651A)
New Style Royal



#08439 (B51A)
New Style Royal
Triple Seal Handle Kit



#08054 (A6)
Handle Coupling Nut

TAILPIECE REPAIR



#08037
(A553)
"O" Ring



#08038
(H552)
Locking Ring

PIPE SUPPORT SPLIT RINGS



#08109

1-1/2" OD x 6"

#08129

1-1/2" OD x 3-1/2"

SLOAN REPAIR PARTS

SLOAN ADA ANTIMICROBIAL HANDLE ASSEMBLY

#40261391
(B73A56)



SLOAN



Genuine replacement for original Sloan valves. It installs easily into existing flushometer bodies. Manufactured by Sloan, it also replaces units by Zurn and others. It is factory assembled and pre-lubricated to assure long life and reliable operation. The blue collar identifies this handle assembly has been treated with antimicrobial materials.

COMPLETE 1-1/2" VACUUM BREAKERS FOR REGAL & OLD STYLE ROYAL

#08014 (V500-AA)
1-1/2" x 9" (Common)

#08058 (V500-AA)
1-1/2" x 15"

#08059 (V500-AA)
1-1/2" x 24-1/2"

#08060 (V500-A)
1-1/2" x 3-1/16"
(Less Tailpiece)



COMPLETE 1-1/4" VACUUM BREAKERS FOR REGAL & OLD STYLE ROYAL

#08015 (V500-AA)
1-1/4" x 9" (Common)

#08061 (V500-AA)
1-1/4" x 15"



HANDLE ASSEMBLY

#08069 (B73A)



For Sloan Royal Flushometers to satisfy A.D.A. requirements. With triple silicone impregnated handle seal.



HANDLE ASSEMBLY

#08008 (B32A)



HANDLE GRIP FOR HANDLE ASSEMBLY

#08068 (B32)



HANDLE SEAL

#08009 (B39)



HANDLE GASKET

#08065 (A31)



ADJUSTABLE TAILPIECES

#08098 Tailpiece 5 -1/16"

#08099 Tailpiece 6 -1/16"

COMPLETE 3/4" VACUUM BREAKERS FOR REGAL & OLD STYLE ROYAL

#08016 (V500-AA)
3/4" x 9" (Common)

#08062 (V500-AA)
3/4" x 15"



NEW STYLE ROYAL VACUUM BREAKERS

#08467 (V600-AA)
1-1/2 x 9"
New Style Royal
with One Piece Nut

#08436 (V600-AA)
1-1/2" x 22"
with 2" Offset and
One Piece Nut



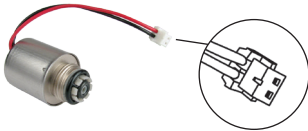
SLOAN REPAIR PARTS

SOLENOID & BASE PLATE FOR G2



#08720 (EBV145A)
Optima Plus G2, New Style
Base with Solenoid

NEW STYLE G2 SOLENOID



#08721 (EBV136A)
Replacement
Solenoid Only
for New Style G2

SOLENOID SHAFT REPAIR KIT



#08552
(EL163A)

STOP COVERS



#08321 (H1009A)
3/4" Vandal Proof
Stop Cover



#08322 (H1010ABX)
1" Vandal Proof Stop Cover
Also Fits New Style
Royal 3/4" Valve

COVERS



#08049 (A72)
Chrome Plated Cover
For Royal

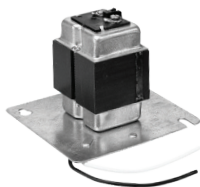


#08083 (R10)
Chrome Plated Cover
For Regal



#08050 (A71)
Plastic Inside
Cover

SLOAN OPTIMA SYSTEMS TRANSFORMERS



#08390 (EL154)

Sloan offers a wide range of 24 VAC step down transformers for use with Sloan Optima® flushometers and faucets. All Sloan transformers are class II, UL listed.

CONTROL MODULE ASSEMBLY



Before 2019
#08462 (ETF450A)

71 PIECE MASTER DUAL FILTER REPAIR KIT

#08730

*For Sloan Flushometers that use
Dual Filtered By-Pass*



- 2 3/4" Spud Washer
- 2 1-1/4" Spud Washer
- 2 1-1/2" Spud Washer
- 4 3/4" Gasket for Coupling
- 4 1-1/4" Gasket for Coupling
- 4 1-1/2" Gasket for Coupling
- 12 Control Stop Lock Ring
- 12 O-Ring for Tailpiece
- 2 3/4" Control Stop Repair Kit
- 2 1" Control Stop Repair Kit
- 4 Hi-Performance Handle Repair Kit
- 4 Hi-Performance V/B Repair Kit
- 2 Inside Cover
- 2 1.0 GPF Urinal Retro Kit
- 2 1.5 GPF Urinal Retro Kit
- 2 1.6 GPF Closet Retro Kit
- 2 3.5 GPF Closet Retro Kit
- 2 3/4" Friction Ring
- 2 1-1/4" Friction Ring
- 2 1-1/2" Friction Ring

56 PIECE OPTIMA PLUS REPAIR PARTS KIT

#08588

*Master Kit for Battery Operated
Flushometers*



- 1 1.0 or 1.5 GPF Drop-In Kit w/ Batteries
- 1 1.6 or 3.5 GPF Drop-In Kit w/ Batteries
- 8 "AA" Batteries
- 2 V/B Repair Kits
- 3 Cover Gasket
- 2 Old Style Solenoid for Optima Plus
- 12 Electronic F/V Seal for Old Style Drop-In Kit
- 1 Solenoid & Base Plate for Old Style Optima
- 1 3/4" V/P Cover for Stop Assy.
- 1 3/4" or 1" V/R for Stop Assy.
- 1 Locking Ring for Cover
- 1 Heavy Duty Strap Wrench
- 12 Tailpiece Locking Ring
- 12 Tailpiece O-Ring
- 2 Cover for Handle Opening w/ Gasket
- 3 Diaphragm for Regal & O/S Royal

MASTER REPAIR PARTS ASSORTMENT

#08066

*Includes The Parts You
Need Most Often*



- 4 1-1/2" Gasket Kit
- 4 1-1/4" Gasket Kit
- 4 3/4" Gasket Kit
- 6 Vacuum Breaker Repair Kit
- 2 Repair Kit For Closet Stop
- 2 Repair Kit For Urinal Stop
- 2 1-1/2" Spud Washer
- 2 1-1/4" Spud Washer
- 2 3/4" Spud Washer
- 6 Handle Repair Kit
- 6 Handle Seal
- 12 O-Ring
- 6 Locking Ring
- 1 Sloan Super Wrench
- 6 Diaphragms
- 6 Molded Discs
- 4 Closet Relief Valve
- 4 Urinal Relief Valve
- 4 Low Consumption Relief Valve
- 3 Guide Assy.
- 3 Low Consumption Guides

SLOAN REPAIR PARTS

SLOAN SIDE MOUNT OPERATORS

Battery Powered, Sensor Activated Retrofit Conversion Kits For Exposed Flushometers

ALL UNITS

- Retrofits to Royal, Sloan Regal, Crown, and Zurn Flushometers.
- Chrome plated housing.
- Includes 4 "C" cell alkaline batteries
- Three year battery life at 3000 flushes/month
- ADA compliant infrared side mount sensor for automatic hands free activation.
- User friendly three second flush delay.
- Automatic 72 hour sentinel flush keeps fixture fresh during periods of non-use
- Indicator lights show when user is in range or battery is low.
- 3 year limited warranty

SLOAN.



SINGLE FLUSH SIDE MOUNT OPERATOR

#85606 (EBV500A)

For Closet or Urinal

- For exposed closet or urinal flushometers
- Smart Sense Technology™ features self-adaptive infrared sensor
- Non-hold-open, user initiated True Mechanical Override (TMO) black button provides full flush.

SLOAN.



DUAL FLUSH SIDE MOUNT OPERATOR

#85605 (EBV550A)

For Closet Only

- Smart Sense Technology™ features self-adaptive infrared sensor and automatically provides reduced flush when user is in range for less than 60 seconds.
- Reduced flush on a 1.6 GPF flushometer will deliver 1.1 GPF, a 31% savings in water per flush.
- Full flush automatically provided when user is present longer than 60 seconds.
- Non-hold-open, user initiated True Mechanical Override (TMO) black button provides full flush.
- Small green button provides user initiated reduced flush option.

SIDE MOUNT OPERATOR WITH METAL COVER

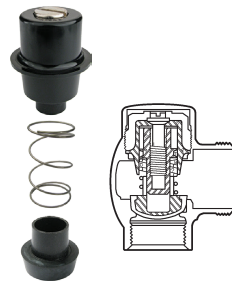
SLOAN.

#08532
(EBV89AM)



- Fits Sloan or Zurn
- Sensor-operated for hands-free performance
- Low battery light notification
- Courtesy flush button
- Standard "C" batteries supplied
- No water shut-off required for installation or battery replacement
- Fixtures stay cleaner longer
- Helps eliminate odors
- ADA compliant

STOP REPAIR KITS



#08033 (H543ASD)

3/4" - Stop Repair Kit - Old Style

#08032 (H541ASD)

1" - Stop Repair Kit
Also 3/4" New Style

Wheel handle stop kits available on request.

CHROME PLATED COUPLINGS

For Royal



#08017 (F5AT) 1-1/2"

#08018 (F5AU) 1-1/4"

#08019 (F5AW) 3/4"



For Regal

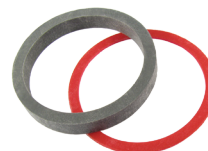


#08142 (F56A) 1-1/2"

#08143 (F55A) 1-1/4"

#08144 (F54A) 3/4"

GASKET KITS FOR COUPLINGS



#08020 1-1/2"

#08021 1-1/4"

#08022 3/4"

Retrofit from manual to sensor.

Sloan offers the widest variety of easy-to-install retrofit products designed to convert manual flushometers to sensor activated. Installation is quick and easy, without having to disconnect the flushometer from the stop and fixture.



Top Mounted

SOLIS® Solar-powered, with battery backup

ECOS® High efficiency, battery-powered

G2 Standard, battery-powered



Side Mounted

DFSM Dual flush, battery-powered with TMO

SFSM Single flush, battery-powered with TMO

SMOOTH Over-the-handle, battery-powered with TMO

SMT Standard, battery-powered

It is easy to upgrade your commercial restroom and see the benefits of hands-free activation, improved hygiene and additional water savings.

Visit **equiparts.net** to learn more.

Call **412.442.6622** to speak to a representative.



ZURN FLUSH VALVES

AQUAVANTAGE VS. AQUAFLUSH

- **AquaVantage - Dark Blue (Better)** Triple filtered by-pass diaphragm
- Integral triple filter by-pass diaphragm valve virtually eliminates run-on due to sediment.
- Siphon-guard control stop with vandal resistant cap and locking set screws.
- Free spinning stop cap can easily be pried-off with standard screwdriver.
- **Aquaflush - Light Blue (Budget)** Dual filtered by-pass diaphragm
- The clog resistant by-pass resists scale build up and works with flow surface optimization to maintain optimal performance.
- Siphon-guard control stop with adjustment screw protector.

#40265105 (ZERK-CPM-TMS) EZ FLUSH® (ZURN) WITH METAL COVER



- Fits Zurn or Sloan
- Sensor-operated for hands-free performance
- Low battery light notification
- Standard "C" batteries supplied
- Time savings - no water shut-off required for installation or battery replacement
- Courtesy flush button
- Fixtures stay cleaner longer
- Helps eliminate odors
- ADA compliant

#81109 (P6000-DF-KIT) DUAL FLUSH HANDLE W/ 1.6 GPF RETRO KIT



#08855 (P6000-M-ADA-DF) DUAL FLUSH HANDLE ONLY



#08831 (EBV119) SIDE MOUNT ALLEN WRENCH



AQUAVANTAGE 1-1/2" VACUUM BREAKER TRIPLE FILTERED DIAPHRAGM



#83248 (Z6000AV)
CLOSET - 3.5 GPF

#08677 (Z6000AV-WS1)
CLOSET - 1.6 GPF
Low Consumption

AQUAFLUSH 1-1/2" VACUUM BREAKER DUAL FILTERED DIAPHRAGM



#08751 (Z6000-YB-YC)
CLOSET - 3.5 GPF

#08658 (Z6000-WS1-YB-YC)
CLOSET - 1.6 GPF
Low Consumption

AQUAVANTAGE 1-1/4" VACUUM BREAKER TRIPLE FILTERED DIAPHRAGM



#83249 (Z6001AV)
URINAL - 3.0 GPF

#08930 (Z6001AV-WS)
URINAL - 1.5 GPF

#83250 (Z6001AV-WS1)
URINAL - 1.0 GPF
Low Consumption

AQUAFLUSH 1-1/4" VACUUM BREAKER DUAL FILTERED DIAPHRAGM



#08901 (Z6001-YB-YC)
URINAL - 3.0 GPF

#83251 (Z6001-WS1-YB-YC)
URINAL - 1.0 GPF
Low Consumption

AQUAVANTAGE 3/4" VACUUM BREAKER TRIPLE FILTERED DIAPHRAGM



#08924 (Z6003AV)
URINAL - 1.5 GPF

#08673 (Z6003AV-WS1)
URINAL - 1.0 GPF
Low Consumption

AQUAFLUSH 3/4" VACUUM BREAKER DUAL FILTERED DIAPHRAGM



#83252 (Z6003-YB-YC)
URINAL - 1.5 GPF

#82329 (Z6003-WS1-YB-YC)
URINAL - 1.0 GPF
Low Consumption

ZURN REPAIR PARTS

ZURN VACUUM BREAKER



#08527
(P6000-A-AA-CP)
1-1/2 x 9
Vacuum Breaker



#08629
(P6001-A-AA-CP)
1-1/4 x 9
Vacuum Breaker



#08631
(P6003-A-AA-CP)
3/4 x 9
Vacuum Breaker



#08300 (P6000-B-HP)
Vacuum Breaker Repair Kit
(Blue)

ZURN HANDLE



#08512 (P6000M-ADA)
ADA Handle Assembly



#08299 (P6000-MK)
Handle Kit



#08514 (P6000-M9)
Handle Seal (Blue)

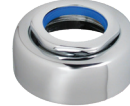


#08515 (P6000-M10)
Handle Gasket



#08855
(P6000-M-ADA-DF)
Dual Flush Handle

ZURN C.P. COUPLING ASSEMBLIES



#08529 (P6000-H)
1-1/2 Coupling Assembly



#08622 (P6001-H)
1-1/4 Coupling Assembly



#08621 (P6003-H)
3/4 Coupling Assembly

ZURN GASKET KITS



#08020
1-1/2 Gasket Kit
for Closet



#08021
1-1/4 Gasket Kit
for Urinal



#08022
3/4 Gasket Kit
for Urinal

CONTROL STOP REPAIR KIT 3/4" OR 1"



#08625
(P6000-D-SD)

ZURN MASTER REPAIR PARTS ASSORTMENT

#08066Z

Kit Includes:

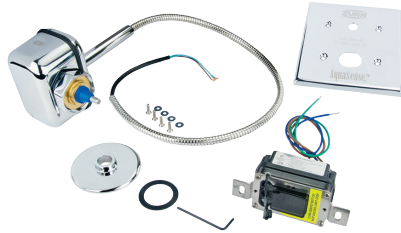


- | | |
|------------------------------|--------------------------------------|
| 12 Locking Rings | 4 Control Stop Repair Kits 3/4 or 1" |
| 12 O-Rings | 4 Guide Assemblies |
| 6 Handle Seals | 4 Friction Rings 3/4" |
| 6 Handle Gaskets | 4 Friction Rings 1-1/4" |
| 6 Handle Repair Kits | 4 Friction Rings 1-1/2" |
| 6 Retainer Discs | 4 Spud Washers - Flanged 3/4" |
| 6 Diaphragms with flow rings | 4 Spud Washers - Flanged 1-1/4" |
| 4 Vacuum Breaker Repair Kits | 4 Spud Washers - Flanged 1-1/2" |
| 4 Closet Relief Valves | 1 Large Adjustable Steel Case |
| 4 Urinal Relief Valves | |

*For Aquaflush
Manual Valves*

ZURN REPAIR PARTS

CONCEALED ACTUATOR ASSEMBLY FOR ZEMS VALVES



#81130
(PEMS6000-HYM)

ELECTRONIC BOX WITH SOLENOID



#58996
(P6900-B-L)

AQUAFLUSH CLOSET DIAPHRAGM KITS

Light Blue Diaphragm



#08500 (P6000-ECR-FF)
4.5 GPF - CLOSET
For Old Style

#08297 (P6000-ECR-WS)
3.5 GPF - CLOSET

#08505 (P6000-ECR-WS1)
1.6 GPF - CLOSET

SOLENOID REPAIR KIT



#56698
(P6900-SRK)

AQUAFLUSH URINAL DIAPHRAGM KITS

Light Blue Diaphragm



#08502 (P6000-EUR-FF)
3.0 GPF - URINAL

#08298 (P6000-EUR-WS)
1.5 GPF - URINAL

#08506 (P6000-EUR-WS1)
1.0 GPF - URINAL

#08750 (P6000-EUR-EWS)
0.5 GPF - URINAL

1-1/2" 'P'-TRAP WITH BRASS NUTS

#68213
(Z8702-9B-PC)



EZ FLUSH® UNIT WITH CHROME PLATED PLASTIC COVER



#68181
(ZERK-CP)

- Fits Zurn or Sloan
- Sensor-operated for hands-free performance
- Fixtures stay cleaner longer
- Helps eliminate odors
- Low battery light notification
- Includes "C" batteries
- Saves time: No water shut-off required for installation or battery replacement
- Courtesy flush button
- ADA complaint

CLOSET REBUILD KITS



#68179
(P6000-ECR-WS1-RK)
1.6 GPF
CLOSET Rebuild Kit

#68180
(P6000-ECR-WS-RK)
3.5 GPF
CLOSET Rebuild Kit

SLOAN BASYS & OPTIMA FAUCETS

SEMI-ABOVE DECK ELECTRONICS

All low profile Basys faucets have semi-above deck repairable electronic parts. The sensor and solenoid can both be repaired or replaced from above the deck. The batteries are contained in a holder that is below deck.



#85571

(EFX 350-000-0000 CP)

- 0.5 GPM spray
- Double infrared sensors
- Body type: low, single hole
- No mix, single supply
- Bowed crown

#84681

(EFX 350-003-0000 CP)

- Same as #85571 above, but with 1.5 GPM laminar stream

#83846

(EFX 350-010-0000 CP)

- Same as #85571 above but with:
- Sensing: Capacitance
- 0.5 GPM laminar stream



#85683

(EFX 350-503-0000 CP)

- Body Type: Low, Single Hole
- Integral Side Mixer
- Sensing: Active Infrared (AIR)
- Bowed Crown
- 1.5 GPM Laminar Stream



#83842

(EFX 650-000-0000 CP)

- Body Type: Low, Integrated base
- No Mix, Single supply
- Sensing: Active Infrared (AIR)
- Bowed Crown
- 0.50 GPM Spray

#85533

(EFX 650-003-0000 CP)

- Same as #83842 above, but with 1.5 GPM Laminar Stream

TRIM PLATES (OPTIONAL)



#84116

8" Centerset Sink



#84117

4" Centerset Sink

HARDWIRED FAUCET



Supplied with 4" Plate
(Installation Optional)

#84871 (ETF-610)

- 120 VAC/24 VAC Transformer (specify Plug-in or Box Mount)
- ADA Compliant
- Sensor Activated
- Sensor Range Adjustment Screw
- Troubleshooting LED Indicator Lights
- User Friendly Variable Time Out Settings
- Filtered Solenoid Valve with serviceable Strainer Filter
- Bak-Chek® Tee for Hot/Cold Supply
- Vandal Resistant Spray Head with Pressure Compensating Flow Control

For Transformers, Call for Assistance

BATTERY OPERATED FAUCET



Supplied with 4" Plate
(Installation Optional)

#55150 (EBF-615)

- 120 VAC/24 VAC Transformer (specify Plug-in or Box Mount)
- ADA Compliant
- Sensor Activated
- Sensor Range Adjustment Screw
- Low battery LED Indicator Lights
- User Friendly Variable Time Out Settings
- Filtered Solenoid Valve with serviceable Strainer Filter
- Bak-Chek® Tee for Hot/Cold Supply
- Vandal Resistant Spray Head with Pressure Compensating Flow Control

OPTIMA I.Q. FAUCET



#57130 (EAF150-ISM-IC)

- 2.2 GPM
- With integral spout temperature mixer and i.q.-Click feature
- Modular one-piece construction with all concealed components above deck.
- Double infrared sensors with automatic setting feature and microprocessor
- Low battery indicator
- Includes 6 volt lithium 2cr5 commercial battery

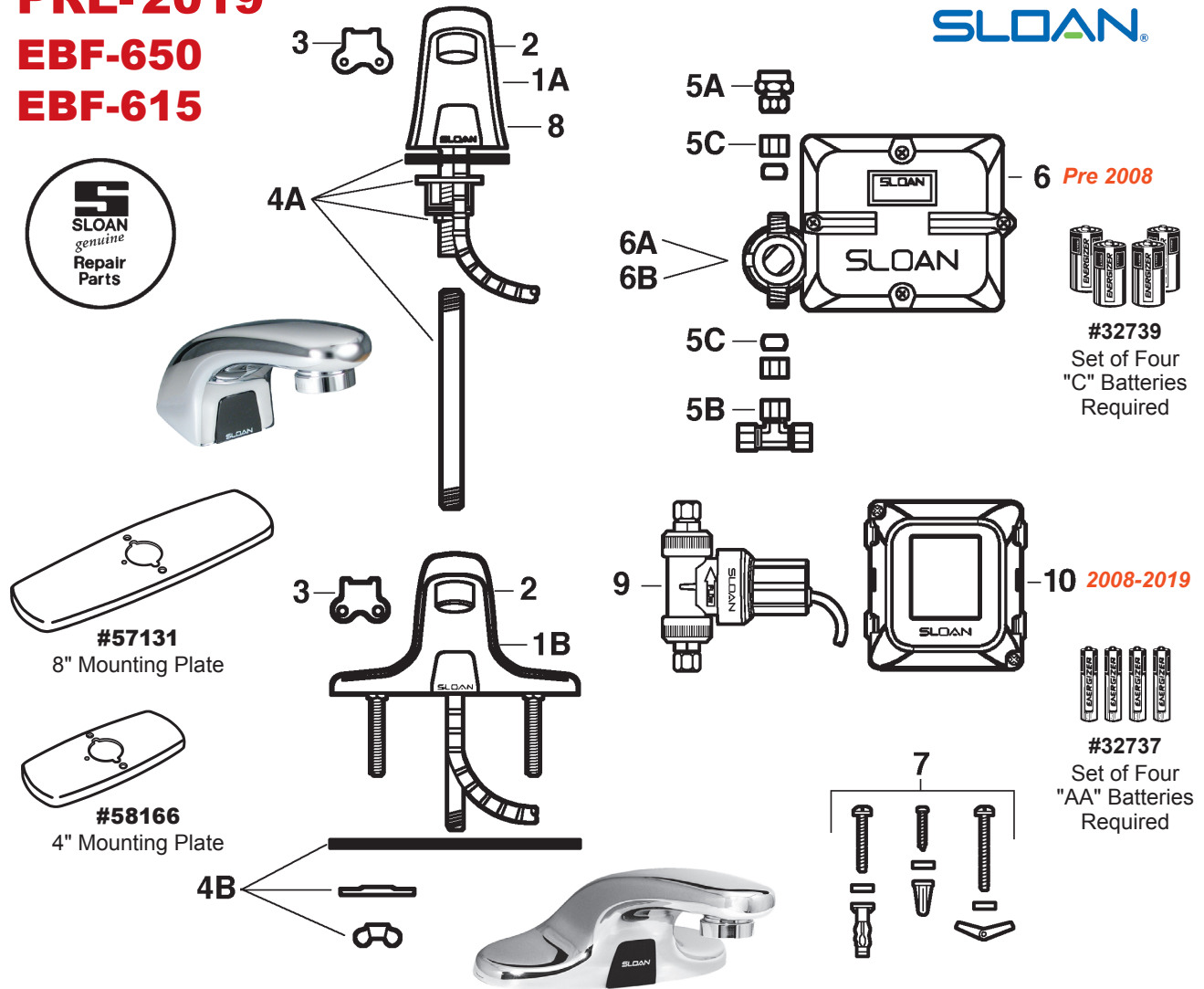
This single hole model features an integral temperature control lever which allows the user to adjust the water temperature. The i.q.-Click feature allows the user to place the faucet into optional function modes, including "continuous run" and "temporary off" simply by pressing a button on the spout.

**Also available with 4" trim plate (#58166)
or 8" trim plate (#57131)**

SLOAN ELECTRONIC FAUCETS

PRE-2019
EBF-650
EBF-615

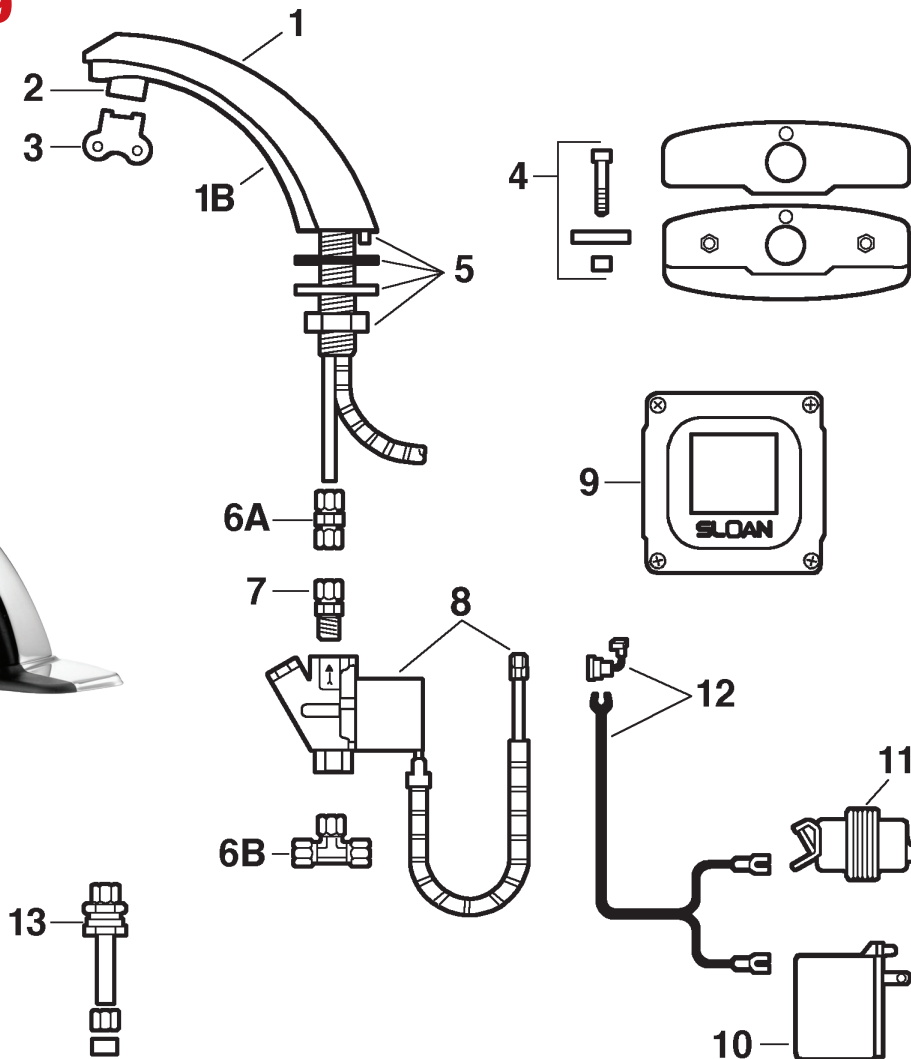
SLOAN®



1A #54700	Pedestal Faucet Spout & Sensor Assembly (EBF-615)	Pre-2008 only	6 #54325	Pre-2008 Control Module Assembly Uses Four "C" Batteries (#32739) and Five Pin Connector
1B #54701	Faucet Spout & Sensor Assembly (EBF-650)	Pre-2008 only	6A #54335	Pre-2008 Solenoid Replacement Kit. Includes Solenoid Body, Solenoid Enclosure, and Solenoid Filter Cap
2 #59173	Spray Head w/Key (male 0.56 gpm)		6B #08578	Filter Replacement Kit
#54683	Aerator Spray Head w/Key (male 2.2 gpm)		7 #54686	Mounting Hardware
#85444	Laminar Flow Aerator (male 2.2 gpm)		8 #57970	Pre-2008 Sensor Replacement Kit includes Cable Assembly, Retainer for PC Board Assembly, and Housing for Sensor Window
3 #54693	Key Only		#81783	2008-2019 Sensor Only
4A #54703	Mounting Kit for EBF-615		9 #81784	2008-2019 Solenoid Assembly
4B #54678	4" Base Plate		10 #81785	2008-2019 Control Module Assembly Uses Four "AA" Batteries (#32737) & Phone Jack
5A #54685	1/8" NPT Pipe to 3/8" Compression			
5B #56794	3/8" Bak® Check Tee			
5C	Solenoid Supply Kit (NOT SOLD)			

SLOAN ELECTRONIC FAUCETS

**PRE-2019
ETF-80**



1 #59707 Faucet and Sensor Assembly 1B #81600 Sensor Assembly Only for faucets manufactured from 10/2003 to 2019. Identified by an all-white Sloan logo on throat plate.	5 #59095 Mounting Kit 6A #27622 1/4" to 3/8" Compression Fitting Connector 6B #56794 3/8" Back Check Tee
2 #80603 Spray Head w/Key (fem. 0.5 gpm) #50013 Aerator Spray Head w/Key (fem. 2.2 gpm) #84322 Laminar Flow Spray Head w/Key (fem. 2.2 gpm)	7 #08634 Single Solenoid Supply Kit. Includes 2 ETF-61 compression fittings, compression nut, and ferrule.
3 #54693 Key Only	8 #08367 24 VAC Solenoid Valve Assembly includes 18" armored cable and 2 terminal housings. * #08633 Solenoid Valve Repair Kit Includes replacement filter.
4A #55154 4" Centerset Trim Plate Kit for faucet only. Includes: 2 nuts, 2 hex screws, 2 flat washers, single hole cover plate, and base plate.	9 #08462 Control Module Assembly
4B #54694 4" Centerset Trim Plate Kit for faucet with optional mixing valve. Includes: 2 nuts, 2 hex screws, 2 flat washers, dual hole cover plate, and base plate.	10 #08377 120V/35VA Plug-in Transformer
4C #52154 8" Centerset Trim Plate Kit for faucet only. Includes 2 nuts, 2 washer gaskets, 2 fender washers, base gasket, back-up spacer and single hole trim plate assy.	11 #54688 24V/40VA Box Mount Transformer
	12 #54689 Input Power Cable (Transformer to Control Module) includes strain relief and 2 terminal crimp connectors.
	13 #08218 Back Check

SLOAN ELECTRONIC FAUCET PARTS

FOR OPTIMA EBF-650, EBF-550, & EBF-750 SERIES

Before 2008



Control Module Assembly

#54325 (EBF60A)

With Solenoid Body &
Five Pin Connector
Uses Four "C" Batteries



Solenoid Replacement Kit

#54335 (EBF1011A)



Solenoid Filter Replacement Kit

#08578 (EBF1004A)

FOR OPTIMA EBF-85 & EBF-187 SERIES

Before 2019



Solenoid Valve Module Assembly

#54003 (EBF11A)



Solenoid Filter Replacement Kit

#08580 (EBF1001A)

For Old Solenoid before 2000
7/8" Dia Filter



Solenoid Filter Replacement Kit

#08578 (EBF1004A)

FOR OPTIMA EBF-600 SERIES

From 2008-2019



Control Module Assembly

#81785 (ETF-735A)

- Uses four AA batteries
- Uses phone jack
- Old and new style are NOT interchangeable

Solenoid Valve Assembly

#81784 (ETF740A)

FOR OPTIMA EBF-85 SERIES

Before 2019



Optima Faucet Spout and Sensor Assembly

#53814 (EBF10A)

- Used with sensor activated lavatory faucets **#55115** and **#55116** (EBF-85)
- Battery powered
- Furnished with a black plastic throat plate

FOR OPTIMA EBF-650 SERIES Optima Faucet Sensor Replacement Kit



#57970 (EBF80A)

- *Before 2008*
- Used on faucet **#55090**



#81783 (ETF749A)

- *From 2008-2019*
- Used on faucet **#55090**
- Uses phone jack connector

FOR OPTIMA ETF SERIES

Before 2019



Control Module Assembly

#08462 (ETF450A)



Solenoid Valve Assembly

#08367 (ETF370A)

FOR OPTIMA ETF-660 & ETF-770 SERIES

Before 2019



Microphone Sensor

#52857 (EL3500A)

FOR OPTIMA ELF-10, ESF-20, & ESF-30 SERIES



Solenoid Valve Assembly

#51804 (ETF1004A)

BATTERY HOLDER



#84106 (EFX23A)

Battery Pack
Includes 4 AA batteries
For Low Profile Faucets

FAUCETS

SLOP SINK FAUCET WITH PAIL HOOK



#55126 (445-897SRXKCCP)

- 5-3/4" rigid atmospheric vacuum breaker spout with 3/4" male hose thread and pail hook
- 3-3/8" body with arms adjustable from 3" to 8-3/8" centers
- 2-1/2" offset supply arm with integral shut-off stop
- 2-3/8" vandal proof lever handles

SLOP SINK FAUCET WITH SHORT SPOUT



#55130 (305-VBRRCF)

- 2-3/8" rigid atmospheric vacuum breaker spout with 3/4" hose thread
- 3-3/8" body with arms adjustable from 3" to 8-3/8" centers
- 2-1/2" offset supply arm with integral shut-off stop
- 2-3/8" vandal proof lever handles

4" ADA GOOSENECK FAUCET



#55047 (895-317ABCP)

- 4" Centers
- 4" vandal proof wristblade handles
- 3-1/2" rigid/swing gooseneck spout
- 2.2 GPM aerator

8" ADA GOOSENECK FAUCET



#59900 (786-E3ABCP)

- 8" centers
- 4" vandal proof wristblade handles
- 5-1/4" rigid/swing gooseneck spout
- 2.2 GPM aerator

4" GOOSENECK FAUCET



#55060 (895-ABCP)

- 4" centers
- 2-3/8" vandal proof lever handles
- 3-1/2" rigid/swing gooseneck spout
- 2.2 GPM aerator

E-TRONIC FAUCET



#81991 (116.606.AB)

- Vandal resistant 0.5 GPM spray outlet
- Integral body construction for easy installation
- Efficient dual-beam infrared sensor with multiple field adjustable modes and ranges (manual teach in)
- Single supply for cold or tempered water
- Metal spout construction
- Polished chrome plated finish
- Above-deck electronics with choice of CR-P2 battery (shown) or AC Adapter
- Water-tight solenoid with filter screen
- 1/2" NPSM brass shank with filter screen

SINGLE HOLE SENSOR FAUCET WITH INTEGRATED THERMOSTATIC PROTECTION



#47308 (E80-A11A-17ABCP)

- 4" centers
- Pressure compensating Econo-Flo™ non-aerating spray outlet 0.5 GPM
- Single hole
- Thermostatic protection patent pending
- Includes 6-volt lithium CRP2 battery
- Compatible with Commander™ Handheld Programming Unit; multiple field-adjustable modes and ranges
- Dual supply for hot and cold water
- Stainless steel supply hoses included
- User adjustable thermostatic mixer (included); pre-assembled with concealed internal thermostatic control mixer
- Polished chrome

4" SINGLE LEVER LAV FAUCET



#82292 (420-ABCP)

- 4" Centers
- 4-1/4" lever handle
- 4-5/8" C x C rigid cast brass spout
- 1.5 GPM non-aerating outlet
- Extra heavy duty

4" LAV FAUCETS



#55050 (802-VABCP)

- 4" centers
- 2-3/8" vandal proof lever handles
- 4" spout
- 2.2 GPM vandal proof aerator



#55057 (802-V1000ABCP)

- 4" centers
- Canopy handles
- 4" spout
- 2.2 GPM vandal proof aerator

FAUCETS

TWO HOLE SINGLE LEVER LAV FAUCET



- #11902** (8416)
- Single lever lav faucet
 - Solid cast brass construction
 - Durable ceramic cartridge
 - 6" lever handle
 - 5" spout reach
 - 2.2 GPM aerator



- #83279** (8413)
- Single lever lav faucet
 - Solid cast brass construction
 - Durable ceramic cartridge
 - 5" spout reach
 - 2.2 GPM aerator

- #83279CA** (8413F05)
- Same as the #83279 above, but with a 0.5 GPM aerator

TWO HANDLE LAV FAUCETS



- #83281** (8210)
- Two handle lav faucet
 - Solid cast brass construction
 - 4" centers
 - 2-1/2" lever handles
 - 1/4 turn ceramic cartridges
 - 5-1/2" spout
 - 2.2 GPM aerator



- #83441** (8215)
- Two handle lav faucet
 - Solid cast brass construction
 - 4" centers
 - 4" wrist blade handles
 - 1/4 turn ceramic cartridges
 - 5-1/2" spout
 - 2.2 GPM aerator



- #83464** (8220)
- Two handle lav faucet
 - Solid cast brass construction
 - 8" centers
 - 2-1/2" lever handles
 - 1/4 turn ceramic cartridges
 - 4-5/8" spout
 - 2.2 GPM aerator

SINGLE HOLE SINGLE LEVER LAV FAUCET



- #88700** (9417F15)
- Ideal for high-traffic environments that demand reliable performance.
 - Single lever lav faucet
 - Brass spout and metal handle construction with chrome finish
 - 1255 Duralast™ cartridge with brass adjustable temperature limit stop
 - Vandal resistant aerator and handle assembly
 - 1.2 GPM aerator

ZURN AQUASENSE 4" SENSOR FAUCETS



- #80323** (Z6915)
4" Centerset

- #18580** (Z6915-XL-MV)
with Manual Mixing Valve

- #18581** (Z6915-XL-TMV)
with Thermostatic Mixing Valve

ZURN AQUASENSE DECK MOUNTED SENSOR FAUCETS



- #81518** (Z6913)
Single Hole Faucet

- #81076** (Z6913-CP4)
w/4" Plate

- #80332** (Z6913-CP8)
w/8" Plate

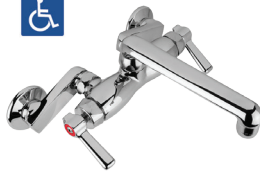
- #18258** (Z6913-XL-MV)
with Manual Mixing Valve

- #18579** (Z6913-XL-TMV)
with Thermostatic Mixing Valve

These faucets are battery powered sensor faucets for retrofit and new construction. They incorporate an infrared convergence-type proximity sensor into the chrome plated cast brass spout. Furnished complete with sensor module, spout module, in-line filter, 4 AA batteries, a 1.5 GPM vandal resistant aerator and an inlet for a 1/2" ball riser supply hose. Sensor range is factory set for optimum performance.

CHICAGO FAUCETS

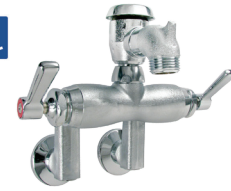
**CHICAGO
FAUCETS.**



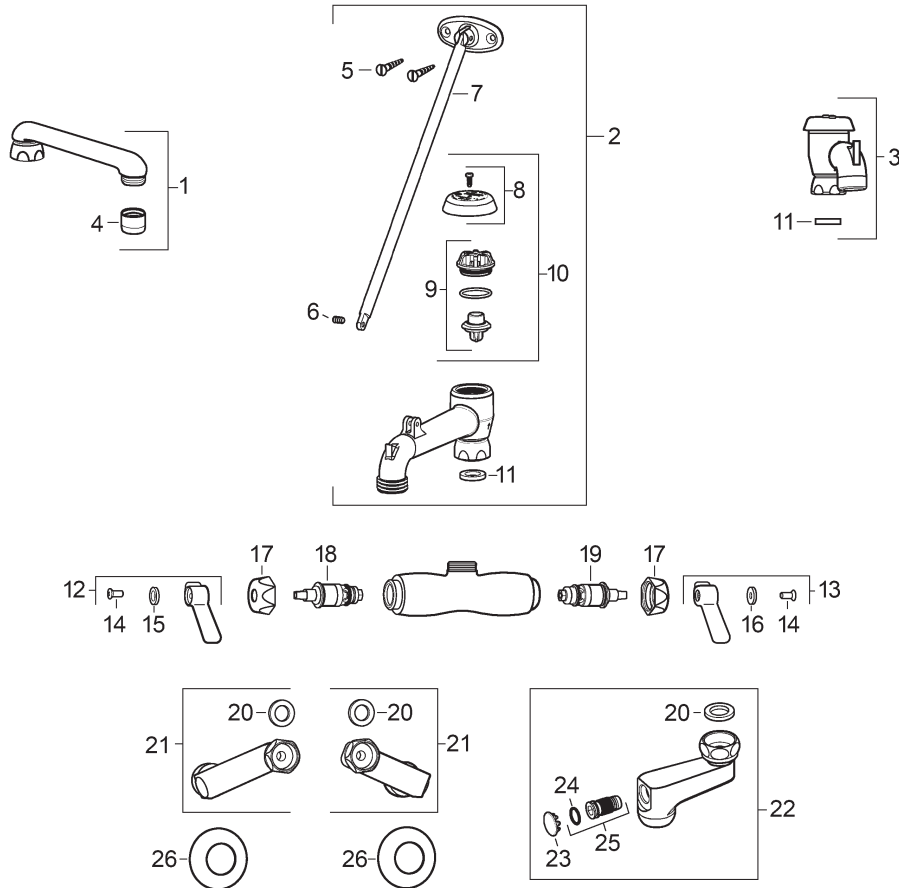
#51185
(445-ABCP)



#55126
(445-897SRXKCCP)



#55130
(305-VBRRCF)



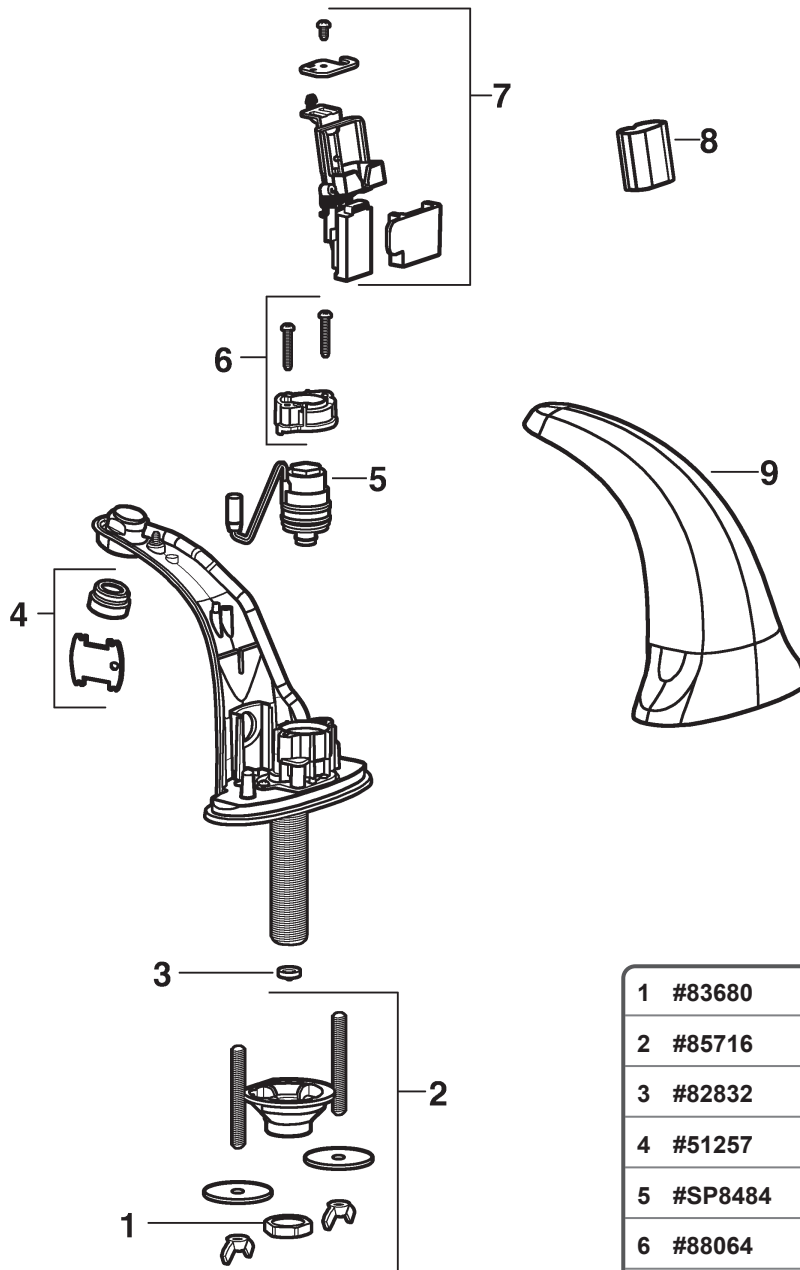
1 #44890 6" Swing Spout with Aerator	9 #82945 VB Repair Kit	19 #45533 RH Quatern Cartridge
2 #66536 5-3/4" Rigid Vacuum Breaker Spout with Brace Rod	10 #82654 VB Repair Kit w/ Cap	#67940 RH Quatern Cartridge with check valve
3 #83182 Stubby Spout with Vacuum Breaker and Pail Hook - Smooth Chrome	11 #51108 Celcon Washer	20 #55349 Faucet Arm Washer
#88192 Stubby Spout with Vacuum Breaker and Pail Hook -Rough Chrome	12 #46146 Hot Lever Handle Assembly	21 #81236 Arm Assembly
4 #50010 2.2 GPM Fem Softflo Aerator	13 #46147 Cold Lever Handle Assembly	22 #81237 Supply Arm Assy. w/Shut Off
5 #SP5810 Flat Head Wood Screw	14 #45483E 10/32 x 1/2 Phil Oval Screw	23 #58716 Button
6 #81204 Set Screw	15 #51302 Red Index Button	24 #SP11687 O-Ring
7 #87478 12-11/32" Brace Rod	16 #50366 Blue Index Button	25 #52123 Stem & O-Ring for Integral Stop
8 #82810 VB Cover with Screw	17 #50336 Cap Nut	26 #12655 Wall Flange
	18 #45534 LH Quatern Cartridge	
	#67941 LH Quatern Cartridge with check valve	

**CHICAGO
FAUCETS.**

CHICAGO FAUCETS

#81991 (116.606.AB.1)

**4" Single Supply
for Tempered Water**



1	#83680	Locknut
2	#85716	Deck Mounting Hardware
3	#82832	Filter/Screen
4	#51257	VP Econoflo Spray Outlet w/Key
5	#SP8484	Solenoid
6	#88064	Bonnet Repair
7	#85717	Module (battery not included)
8	#32906	6V Lithium Battery
9	#85424	Spout Cover

ZURN ELECTRONIC FAUCETS

ZURN AQUASENSE E-Z SENSOR FAUCET SERIES



#59250 (Z6912) Single Hole

#81077 (Z6912-CP4) w/4" Plate

#81078 (Z6912-CP8) w/8" Plate



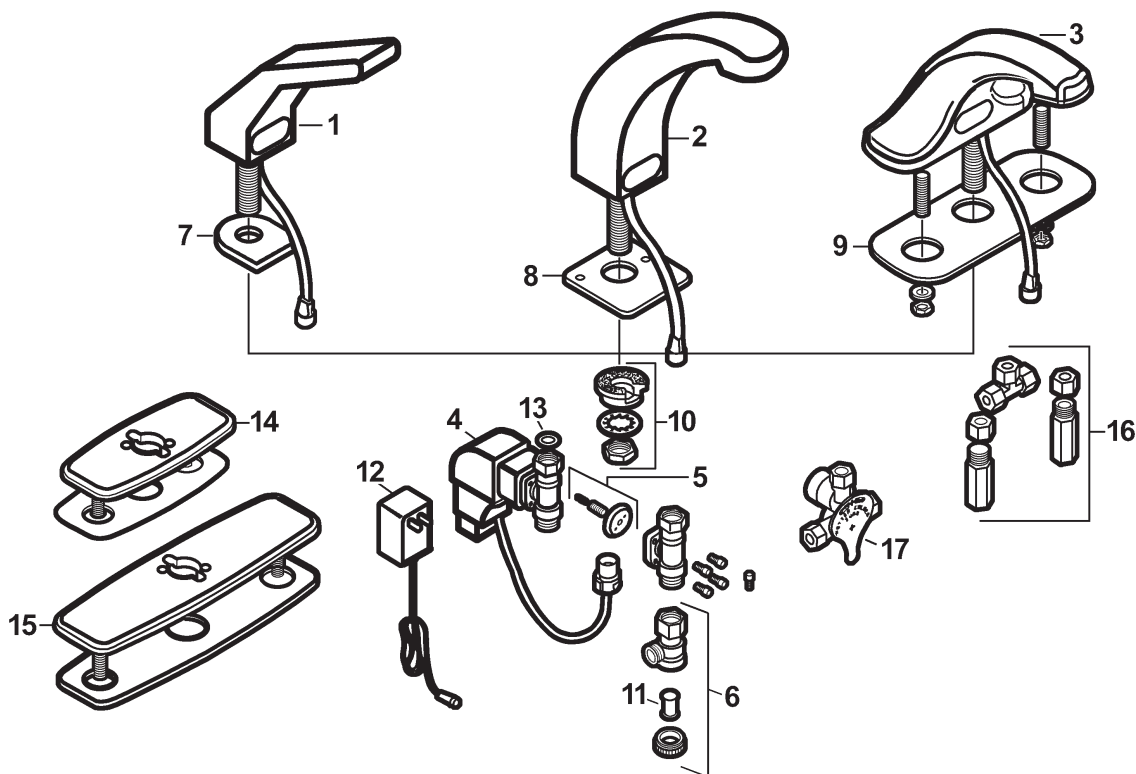
#81518 (Z6913) Single Hole

#81076 (Z6913-CP4) w/4" Plate

#80332 (Z6913-CP8) w/8" Plate



#80323 (Z6915) w/4" Plate



1	#58267	Spout Assembly with Sensor	10	#56860	Mounting Kit
2	#81087	Spout Assembly with Sensor	11	#58301	Filter Screen
3	#81088	Spout Assembly with Sensor	12	#81082	Optional Plug-In Power Converter
4	#58996	Electronics Box with Solenoid	13	#81084	Shank Connection Gasket
5	#56698	Solenoid Rebuild Kit (Diaphragm, Plunger & Plunger Spring)	14	#81085	4" Cast Cover Plate with Gasket
6	#56699	Filter Kit	15	#81086	8" Cast Cover Plate with Gasket
7	#81089	Base Plate Gasket	16	#56752	Mixing Tee with Filters and Backchecks
8	#81090	Base Plate Gasket	17	CALL FOR ASSISTANCE	Manual Mixing Valve with Filter and Backchecks
9	#81091	Base Plate Gasket			

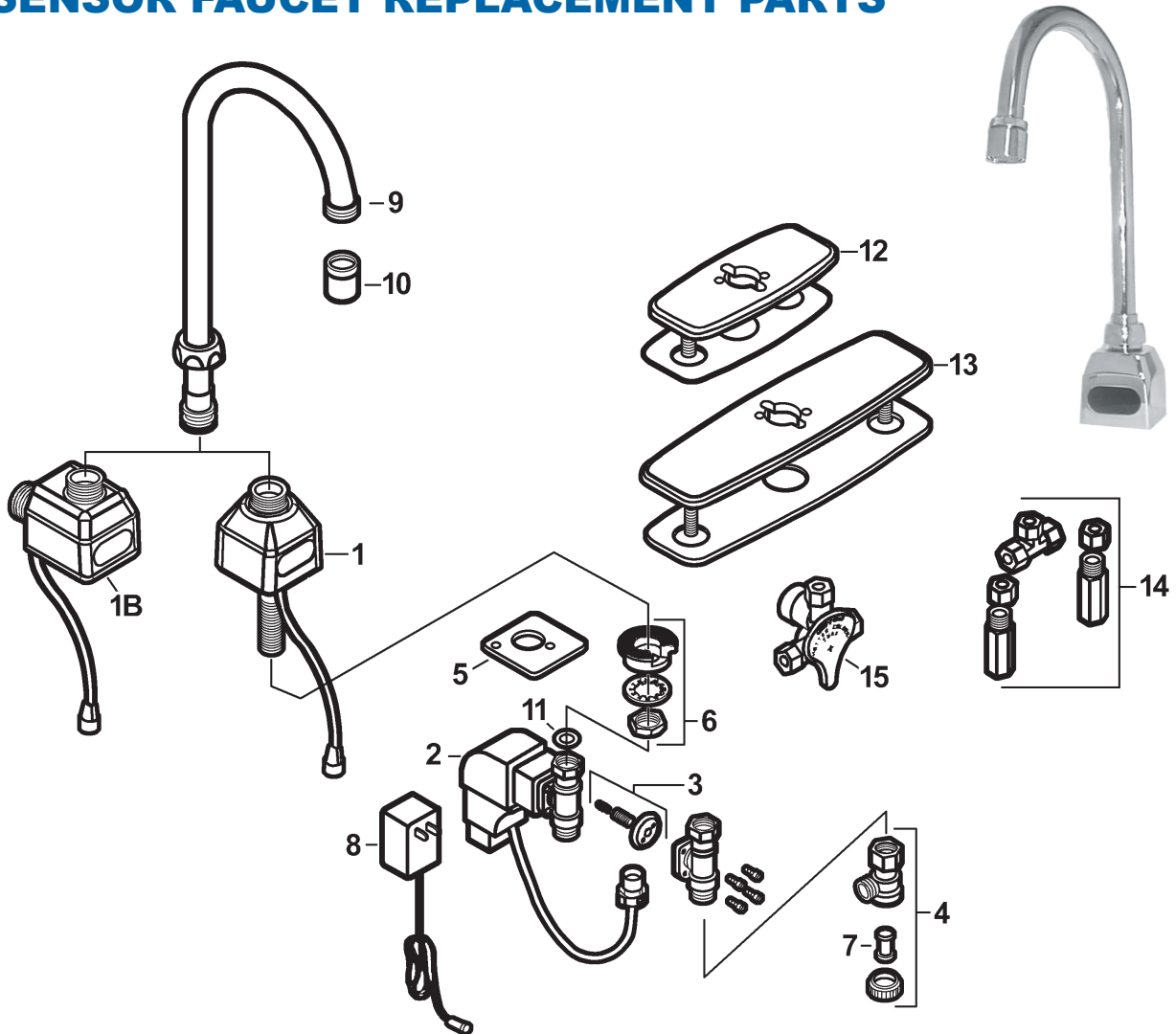
ZURN ELECTRONIC FAUCETS

#81728 (Z6920) Deck Mount

#81079 (Z6922) Back Mount



SENSOR FAUCET REPLACEMENT PARTS



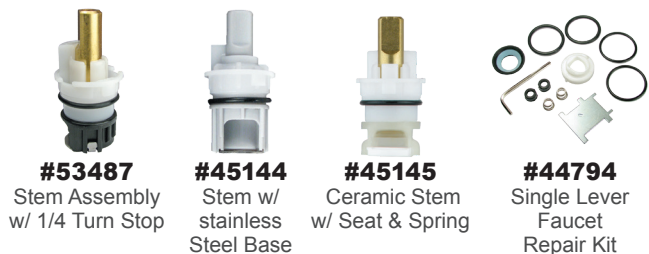
1	#81080	Spout Base with Sensor Assembly	8	#81082	Optional Plug-In Power Converter
1B	#81092	Back Mounted Spout Base with Sensor Assembly	9	#81083	5-3/8" Gooseneck Spout with Nut
2	#5 8996	Electronics Box with Solenoid	10	#05001	2.0 GPM Vandal Resistant Aerator
3	#56698	Solenoid Rebuild Kit (Diaphragm, Plunger & Plunger Spring)	11	#81084	Shank Gasket
4	#56699	Filter Kit	12	#81085	4" Cast Cover Plate with Gasket
5	#81081	Base Plate Gasket	13	#81086	8" Cast Cover Plate with Gasket
6	#56860	Mounting Kit	14	#56752	Mixing Tee with Filters & Backchecks
7	#58301	Filter Screen	15	CALL FOR ASSISTANCE	Manual Mixing Valve with Filters & Backchecks

FAUCET REPAIR

FOR AMERICAN STANDARD



FOR DELTA



FOR CHICAGO FAUCET

Quatern Stems



Ceramic Stems



Handles

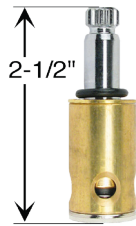


FAUCET REPAIR

FOR KOHLER



#45227
Ceramic Stem
Reversible



#45651
Left Handed
Stem Unit

#04556
Right Handed
Stem Unit



#55425
Shower Cartridge
Assembly

#45230
Balance Cartridge
Only

FOR MOEN



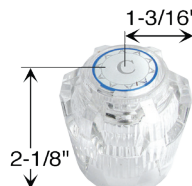
#51898
Hot

#51899
Cold



#46589
Acrylic Lav Handle

#46588
Acrylic Shower Handle



#46362-63
Pair of Acrylic
Handles



#53538
Acrylic Shower Handle
for Posi-Temp only



#50220
Lever Handle
for Shower



#83902
4" Lever
Handle Kit



#83904
Lever Handle
for Shower



#46592
Lever Handle Kit for
Posi-Temp



#04561
Brass
Replacement
Cartridge



#45257
Plastic
Replacement
Cartridge



#44828
Cartridge For
Posi-Temp only



#44828M
Posi-Temp
Cartridge



#83150
Self-Closing
Stem Assy.

FOR MOEN



#83278
Ceramic
Cartridge
w/ Bonnet for
Single Lever
Faucet



#44828HD
Heavy Duty
Cartridge
Posi-Temp
(Brass)



#46989
Old Style
Thermostatic
Cartridge



#66055
New Style
Thermostatic
Cartridge



#45251
Balancing
Spool
Shower



#45252
Hot/Cold
Plastic
Stem



#86678
Metering
Cartridge



#83276
Cold
Ceramic Stem



#88343
3-Function
Cartridge

#83277
Hot
Ceramic Stem

FOR SPEAKMAN



#83579
Pressure
Balance
Cartridge



#81098
New Style Chrome Plated
Trim Package

HUNDREDS OF FAUCET PARTS AVAILABLE! IN STOCK!

ACORN

AM. STANDARD

ARTISTIC BRASS

BLANKO

BRADLEY

BRIGGS

BROADWAY

CENTRAL BRASS

CHG

CHICAGO

CRANE

DELTA

ELJER

ELKAY

FISHER

FRANKE

GERBER

GROHE

HANS-GROHE

INDIANA BRASS

JADO

KOHLER

KWC

LEONARD

MATCO

MILWAUKEE

MOEN

PHOENIX

PHYLRICH

POWERS

PRICE PFISTER

ROYAL BRASS

SAYCO

SLOAN

SPEAKMAN

STERLING

STREAMWAY

SYMMONS

T & S

TOTO

UNION BRASS

UNIV. RUNDLE

VALLEY

WATERSAVER

WOLVERINE

ZURN & MORE...!

FAUCET REPAIR

FOR SYMMONS



#58940
Cold Ceramic Stem



#SP8386
Hot & Cold Stem



#57632
Diverter/
Volume
Spindle



#57634
Diverter/
Volume
Spindle



#57235
Ceramic
Cartridge
w/ Tool



#65628
Diverter
Cartridge



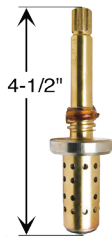
#54032
Slo-Closing
Cartridge



#52124
Self-Closing
Cartridge



#45431 (C-5)
Stem



#45430 (TA-10)
Stem

#49309
Repair Kit
for #45431

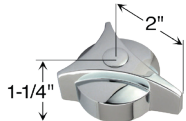
#45868
Repair Kit
for #45430



#80006
New Style
Seat Removal
Tool



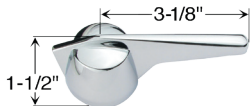
#45867
Shower Seat
Assembly



#46475
For #45430
Fits Temptrol



#56138
Lever Handle Assembly
Fits Temptrol



#46474
For #45431
Fits Safety Mix



#46408
Fits Temptrol

TEMP CONTROL CARTRIDGE



#52685 (7-200NW)
#53877 (7-400NW)
#52454 (7-500NW)
#53173 (7-700NW)

FOR T&S - OLD STYLE

Compression Stem



#02192
Hot Assy.

#02193
Cold Assy.



#02161
Right Handed

#02167
Left Handed



#02162
Right Handed
Insert

#02164
Left Handed
Insert

Stem w/Check Valve



#51433
Hot Assy.

#51432
Cold Assy.



#02115
Right Handed

#02116
Left Handed



#51807
Stem Check
Valve Spring

Compression Stem & Barrel Assembly



#45434
Right Handed
Assembly

#45691
Left Handed
Assembly



#51818
Spring Check
Seat Holder



#02162
Right Handed
Insert

#02164
Left Handed
Insert



#02160
Hot Handle

#02172
Cold Handle



#SP4443
Chrome Bonnet
Assembly
with Packing



#57191
Ceramic - Hot

#57192
Ceramic - Cold



#44859
Right Handed

#44860
Left Handed



#02182
Right Handed
(Does not use Barrel)

#02178
Left Handed
(Does not use Barrel)



#02009
Bonnet Assembly
for Pre-rinse



#02384
Metering Valve Cartridge
Less Cap



#46477
Hot

#46478
Cold

FAUCET REPAIR

FOR T&S - NEW STYLE



#68544
New Style Handle Kit



#68548
Hot Stem and
Handle Assembly
with Bonnet



#68549
Cold Stem and
Handle Assembly
with Bonnet



#68546
Hot Stem and
Bonnet Assembly



#68547
Cold Stem and
Bonnet Assembly



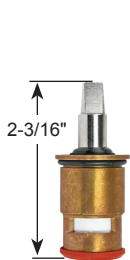
#68545
New Style Bonnet Assembly

#57166
Ceramic Cartridge



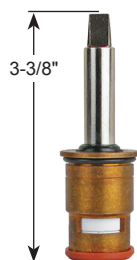
#57167
Single Lever Cartridge

FOR ZURN



#58095
Hot

#58096
Cold



#53529
Hot

#53528
Cold



#58155
Shower
Valve Stem



#53941
Upper Metering
Valve Kit



#57593
Metering Sleeve
& Poppet

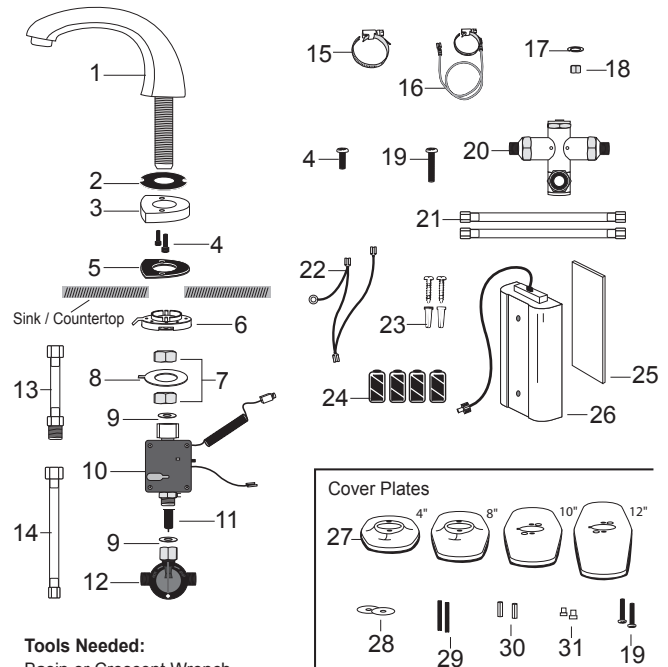
FOR TC MILANO



#82715
Single Hole Auto Lav Faucet
w/ Surround Sensor Technology
No base plate

#81593
As above with 4" base plate

#86097
As above with 8" base plate



Tools Needed:
Basin or Crescent Wrench,
Slotted and Phillips Screwdriver

1	#86075	Faucet Spout	17	#86088	Split Lock Washer
2	#86076	Rubber Gasket	18	#86089	Nut
3	#86077	Insulator	19	#86090	M4 X 12MM Screws
4	#86078	M4 X 25MM Screw	20	#86091	Thermostatic Mixing Valve
5	#86079	Gasket	21	#86092	12" Supply Hose
6	#86080	Grounding Spacer	22	#86093	Ground Insulation Wires
7	#86081	Mounting Nut	23	#86094	Battery Screws & Anchors
8	#86082	Sensor Washer	24	#32740	"D" Cell Alkaline Batteries
9	#86083	Rubber Washer	25	#86095	Double-Sided Foam Tape
10	#82875	Valve Control Module	26	#86096	Battery Compartment
11	#84530	Dirt Filter	27	#81593	4" Cover Plate
12	#84531	Mixing Valve		#86097	8" Cover Plate
13	#86084	6" Extension Hose	28	#86098	Washers for Cover Plate
14	#86085	Main Supply Line Hose	29	#86099	Cover Plate Studs
15	#86086	Drain Ground Clamp	30	#87000	Hex Nuts for Cover Plate
16	#86087	Earth Ground Kit	31	#87001	Screw Spacer

TOOLS

General
PIPE CLEANERS

DRIP-PROOF CARRYING CASE WITH AUGER #03219 #36803

AUGER CARRYING CASE ONLY #36177

CLOSET AUGER ONLY #03129

Six-foot down head auger with extra heavy duty kink-resistant cable. Gives you three extra feet at the touch of a button. Carrying case features a mesh side panel for air circulation.



DRIP-PROOF CARRYING CASE WITH PLUNGER #03001 #36802

PLUNGER CARRYING CASE ONLY #36178

PLUNGER ONLY #03001



Plunger constructed of high grade rubber for easy flexing and powerful thrust. Ribbed inside and out for extra strength. Furnished with full size 18" painted handle. Carrying case features a mesh side panel for air circulation.



VERSA PLUNGER #38679

The key feature of this plunger is the patented VerseFlange™ at the end of it. The material is extremely pliable. The cone easily forms to nearly any shaped toilet opening, creating a tight seal in virtually any toilet. This prevents the splash back you can experience with other plungers. A built-in relief valve in the handle lets you easily purge the air from the device before thrusting and prevent splashback.

URINAL AUGER #35390

General
PIPE CLEANERS



- 48" long spring specially coiled for clearing urinals
- Spring telescopes from guide tube to clear stoppage beyond urinal
- Compact and durable design
- Hexagonal aluminum inner tube
- Galvanized steel push rod
- Rubber bumper to protect bowl
- Vinyl grip handle

CABLE FOR URINAL AUGER #35390CBL

6' TOILET AUGER WITH BULB HEAD & CARRYING CASE

RIDGID

#38910 (K-6P XL)



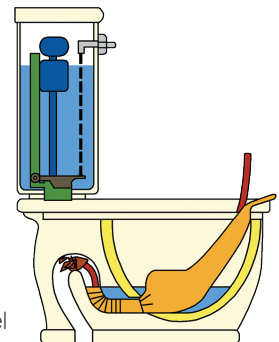
This toilet auger has interchangeable heads that make it versatile for different situations. An adjustable shaft will extend the cable 6 feet and clear beyond the toilet. Tubing is zinc-plated steel to resist corrosion. Auger has a heavy duty tri-wrap cable that gives it extra strength. Comes with a storage bag that prevents any messes while transporting.

CLOSET BOWL SHIELD #83045



Stop the Scratches!

- A necessity when using electric machine vs. manual auger
- Reduce scratch marks, chipping and scraping of bowl
- Simple to use
- Fits most toilets
- Use time and time again
- Leave a job knowing your work was first class
- Doubles as a high capacity funnel



END PIPE WRENCH



Designed with an offset jaw and longer handle swing to ease work in tight places, these wrenches offer the quality features of famous RIDGID Straight Pipe Wrenches: replaceable jaws, full floating hook jaw, easy-spin adjusting nut, pipe scale and malleable iron I-beam handle.

6" #35210	14" #35213
8" #35211	18" #35214 (Shown)
10" #34308	24" #35215
12" #35212	36" #35216

ALUMINUM PIPE WRENCH



Aluminum handles make these heavy duty wrenches almost 40% lighter than similar wrenches with malleable iron handles. Ideal for over head work. Also available with special hook and heel jaws for plastic pipe.

10" #35029	24" #34676 (Shown)
14" #34617	36" #35218
18" #35217	48" #35219

12" SPUD WRENCH #35220



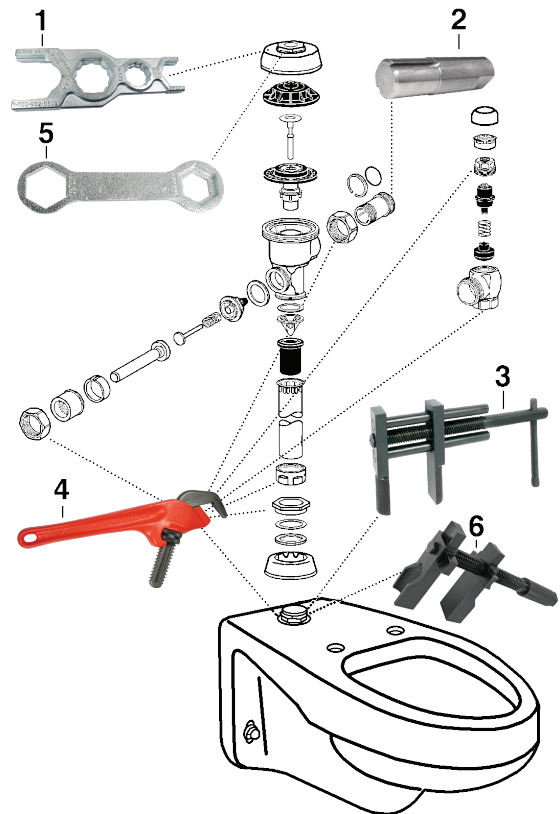
Handy general utility monkey wrench. Designed for efficient working balance and strength but with narrow jaws for easier use in close quarters. Replaceable drop forged heat treated hook jaw. Special malleable I-beam handle. Handy hang up hole.

HEAVY DUTY STRAP WRENCH #34727



- Nylon reinforced rubber strap.
- Slip resistant.
- Won't scratch or mar delicate surfaces.
- Adapts to any shape.
- Adjusts down to 1/2"
- Perfect for Sloan Optima Plus flush valves, tub spouts, shower arms, and water filters

FLUSHOMETER TOOLS



- | | |
|--------------------|--|
| 1. #08047 | Sloan Super Wrench |
| 2. #08063 | Tailpiece Removing Tool |
| 3. #03118HD | Spud Wrench |
| 4. #08070 | Non-Marking Valve Wrench
Great for faucets too! |
| 5. #08010 | Cover and Nut Removing Tool |
| 6. #03145 | Multi-Purpose Inside Spud Wrench |

TOOLS

EZ CHANGE FAUCET TOOL

RIDGID

#38631 (57003)



- Great for common faucet installations and sink strainers
- Cubed insert allows for a variety of common nut sizes
- Ideal for most common 2, 3, 4, and 6 tab mounting nuts
- Wrench for tight shut-off valves
- Retainer for 3 or 4 slot strainer baskets
- 5/8" deep socket for most single hole mountings
- Short body for getting into those tight hard-to-reach areas

TELESCOPIC BASIN WRENCH

#34748 (Shown)

Budget

#03132

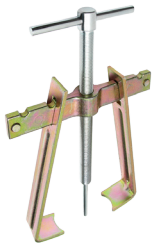
Ridgid



Forged alloy jaws are spring loaded to grip all nuts 3/8" through 1-1/4" across flats. You get fast, one hand ratcheting operation in tight spots. Tension plug holds head in any position up to 90° angle. Handle and shank are chrome plated. Stainless steel spring assures firm grip after positioning jaw on nut, pipe, or tube. Telescopic shank is quickly adjusted to desired length and held there by spring loaded pin.

"BIG YANK" FAUCET HANDLE PULLER

#03201



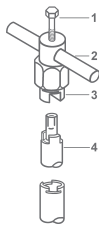
Removes large and small handles. One piece forged drive bracket. Long adjustable grip fingers. 4" bracket width. 5" long gripper fingers.

MOEN

MOEN CARTRIDGE REMOVAL TOOL

#36562

Removes plastic & brass cartridges



CARTRIDGE REMOVING TOOL FOR MOEN

Most Popular!

#34464

Removes plastic & brass cartridges!



HAND HELD MINI PLUNGER

#03406



Designed especially for drinking fountains, sinks and for any low profile area.

18" FLEXIBLE FOUNTAIN DRAIN AUGER

#37099



Also Removes Hair From Drains!

3 PC. TONGUE AND GROOVE PLIER SET WITH OFFSET HEADS

CHAN NEL LOCK



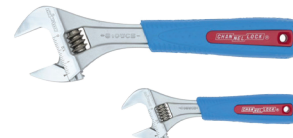
#38640

SIZES:

- 6-1/2"
- 9-1/2"
- 12-1/2"

ADJUSTABLE WRENCH SET

CHAN NEL LOCK



#38641

SIZES:

- 6"
- 10"

5-PIECE SLIM-PROFILE MINI RATCHET SET

#39252 (65200)

KLEIN TOOLS



- Perfect tool for tight spaces
- Includes 1/4" and 5/16" nut drivers, a 1/4" adapter and four drive bits: #1 and #2 Phillips; 3/16" and 1/4" slotted
- 1/4 inch dual-drive head and socket adapter for more versatility
- The 72-tooth ratchet only needs a 5° sweep for tight areas
- High-strength, steel construction increases torque and tool life
- Ring magnet and bit clip for better bit retention
- Finger loop provides one-hand driving and convenient storage

WORK LIGHT WITH LANTERN & HOLSTER

#36995

Includes 4 AAA Batteries



- Outstanding LED flashlight offers 250 lumens of intense white light
- COB* lantern outputs 190 lumens.
- Side-positioned ON/OFF button with Soft Touch Technology
- Body extends to reveal COB* work light
- Length: 6-1/2" closed, 8-7/8" extended
- Convenient no-roll design
- Anodized aircraft grade aluminum
- Water and Impact resistant
- Powerful magnetic base

HI-BEAM RECHARGEABLE FLASHLIGHT

A Super Bright, Wide-Beam Zoomable Flashlight with a Built-In USB Power Bank



#38624 Black

#38624-Red Red

#38624-Sil Silver

- Beam distance of more than 900ft
- 620 lumens at 100%
- Flashlight recharges with a USB cable (included)
- Run time at 100% is 2 hours
- Built-in power bank can charge smartphones and tablets
- Powerful magnet at grip end
- 6.875 in. long, weighs 5 oz.

LIGHTED TWEEZERS

#36824



Includes 3 LR41 Batteries

Built-in LED illuminates your working area. Built to withstand tough jobs and working environments.

INFRARED THERMOMETER

RIDGID

#38902 (36798)



- 30 to 1 Distance to Spot Ratio, allows more accurate readings at farther distances
- Adjustable emissivity to accurately measure the temperature of virtually any surface
- Visual and audible alarms alert when temperature is outside of ranges set by user
- Backlit display for use in dim or poorly lit areas
- Tripod mounting capable for precise, repeatable temperature measurements.

FOLDING HEX KEY SETS



FRACTIONAL

- #34942** 8pc .050 Thru 5/32"
- #44455** 9pc .050 Thru 3/16"
- #34943** 9pc 52/64" Thru 1/4"
- #34457** 5pc 3/16" Thru 3/8"

TORX

- #35664** 7pc T6 - T20
- #34875** 8pc T9 - T40

METRIC

- #35660** 7pc 1.5mm - 6mm
- #35661** 7pc 2mm - 8mm

FOUR WAY HYDRANT KEY FITS ZURN

#03029Z



- Fits 1/4", 9/32", 5/16", 3/8"
- Fits stopcocks, sillcocks & valves
- Precision machined

HINGE DOCTOR

*A Must For Every Shop!
Fix Sagging Doors in Fifteen Seconds!*

The Hinge Doctor® is the time saving, hinge restoration tool you have been looking for. Sagging doors repaired in seconds! We are very serious here. You need to see and use it to believe it. Hinge Doctors® are available in handy kits or individually.



#36752
For Standard Commercial 4-1/2" x 4-1/2" Butt Hinges



#36754
For Ball Bearing & Larger Commercial Hinges



#36755
For Prison & Institutional Hinges and Standard Spring Hinges

HINGE DOCTOR KIT



#36758

Kit includes all three Hinge Doctors, as well as "The Hulk" for most residential hinges.

TOOLS

11-IN-1 MAGNETIC SCREWDRIVER NUT DRIVER



#39232 (32500MAG)



- Integrated screwdriver / nut driver magnetic barrel holds 8 popular tips and converts to 3 nut driver sizes
- Interchangeable shaft for quick and easy switch out
- Includes tips: 3/8", 5/16" and 1/4" nut drivers, #1 and #2 Phillips, 1/4" and 3/16" slotted, T10 and T15 TORX®, and #1 and #2 square recess

7-IN-1 IMPACT FLIP SOCKET DRIVER WITH HANDLE



#39443



- Includes six integrated hex sizes plus a 1/4-Inch bit holding feature
- Includes 1/4", 5/16", 11/32", 3/8", 7/16" and 1/2" nut driver sizes
- Multi-function 1/4" socket has both shallow (driver) and deep (bit holder) configurations for added versatility
- Features 1/4" Quick-Connect adapter for easy use with an impact driver
- Sockets are color coded for easy identification
- Detachable sockets allow for easy removal of metal shavings from magnet
- Sockets store on shaft in any order or orientation

8-IN-1 MULTI-BIT ADJUSTABLE STUBBY SCREWDRIVER



#39233 (32308)



- Multi-bit stubby screwdriver includes 7 different screwdriver bits conveniently housed in the handle, and a 1/4" nut driver
- Blade length is adjustable for easier access

7-PIECE SCREWDRIVER SET WITH CUSHION GRIP

#39197 (85077)



- Includes two cabinet-tip, one Phillips-tip, two keystone-tip, one rotary, and one screw-holding screwdriver
- Tip-Ident® quickly identifies the screwdriver type and tip orientation
- Double wings inside handles provide solid, twist-resistant blade anchors

ALL-IN-ONE PRECISION SCREWDRIVER SET WITH CASE

#39255 (32717)



- Contains 39 bits for various applications, including repair of most Apple® products
- Powerful magnets inside barrel to better retain bits, as well as pick-up and hold fasteners
- Reversible barrel has standard and extended-reach ends
- Compact carrying case features a stay-shut latch and extra-long bits for easier access
- Spin cap offers optimum and precise control

10-IN-1 FOLDING POCKET SCREWDRIVER/NUT DRIVER

#39198 (32535)



Contains 5/16" and 1/4" nut drivers, #1 and #2 Phillips, 1/4" and 3/16" slotted, T10 and T15 TORX, and #1 and #2 square-recess bits

MEGAPRO DRIVERS

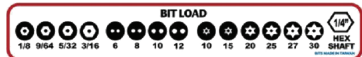


#37696



The Original

The most popular Megapro® driver! Loaded with 7 double end professional quality bits, this assortment provides the 14 most popular tips for driving screws. The shaft opening serves as a 1/4" hex driver!



TOOLS

SPECIAL TAMPERPROOF BIT KIT

A Must For Every Maintenance Department!

#36064



This complete set includes security bits to remove tamper resistant screws, as well as standard bits for more common fasteners. The precision bit set is designed more for repairing mobile phones, tablets, laptops, and other electronics. This kit also includes a ratcheting screwdriver with forward, fixed, and reverse drive settings. The precision driver has a free-spinning end cap that allows constant finger pressure to be applied while turning.

135 Piece Kit

CONTENTS:

Slotted bits: 3/32, 7/64, 1/8, 9/64, 5/32, 3/16, 7/32, 1/4, 9/32, 5/16 in.
 Phillips bits: #0, #1, #2 (3), drywall #2 (2), #3, #4
 Square bits: S0, S1, S2, S3
 Star bits: T5, T5.5, T6, T7, T8, T9, T10, T15, T20, T25, T27, T30, T35, T40, T45, T50
 Pozidriv bits: 0, 1, 2, 3, 4
 Inch hex bits: 1/16, 5/64, 3/32, 7/64, 1/8, 9/64, 5/32, 3/16, 7/32, 1/4, 9/32, 5/16 in.
 Metric hex bits: 1.5, 2, 2.5, 3, 4, 5, 5.5, 6, 7, 8 mm
 Clutch bits: 1/8, 5/32, 3/16, 1/4, 7/32 in.
 1/4 in. drive x 1/4 in. hex bit socket adapter
 Ratchet Screwdriver
 Carry case (for all components)

Security Bit Set:

Tamper-resistant star bits: TR8, TR10, TR15, TR20, TR25, TR27, TR30, TR35, TR40
 Tamper-resistant inch hex bits: 5/32, 9/64, 1/8, 7/64, 3/32, 5/64 in.
 Tamper-resistant metric hex bits: 2, 2.5, 3, 4, 5, 6 mm
 Tri-wing bits: 1, 2, 3, 4
 Torq bits: 6, 8, 10 mm
 Spanner bits: 4, 6, 8, 10 mm
 Magnetic extension bit holder
 32-slot bit organizer

Precision Tool Kit:

Slotted bits: 1, 1.5, 2.5 mm
 Phillips bits: #000, #00, #0, #1
 Star bits: T3, T4, T5
 Tamper-resistant star bits: TR6, TR7, TR8, TR9, TR10, TR15
 Tri-wing bits: 0, 1
 Pentalobe bits: 0.8, 1.2 mm
 Nut driver bits: 4, 5 mm
 Precision Screwdriver
 Spudger
 Bit organizers
 Storage case

31 PIECE VARIETY BIT KIT

#71197



INCLUDES: Magnetic hand driver with solid handle, magnetic bit holder for 1/4" hex insert bits, socket adapter, and 1" versions of Phillips, slotted, hex, square, star, Posidriv, & clutch bits.

TAMPERPROOF BIT KIT

#71198



INCLUDES: Magnetic hand driver with handle storage, security versions of Phillips, socket, & spanner bits, slotted, Phillips, & square drive bits. Socket adapter included.

42 PIECE SCREWDRIVER SET WITH TWO INSULATED SCREWDRIVERS

#37622



CONTENTS

1 x 5" flexible shaft
 1 x High torque screwdriver
 1/4" bit holder
 2 x Insulated screwdrivers:
 • Slotted 5 x 2-7/8"
 • Phillips PH1 x 2-7/8"

6 x Screwdrivers:

• Slotted 6 x 4", 8 x 6", 6 x 1-1/2",
 • Phillips: PH2 x 4", PH3 x 6", PH2 x 1-1/2"

7 x Precision screwdrivers

1" Screwdriver bits with holder:

• Slotted: 3mm, 4mm, 5mm, 6mm, 7mm
 • Phillips: PH0, PH1, PH2, PH3
 • Torx: T10, T15, T20, T25, T30, T40
 • Hex: 2mm 3mm, 4mm, 5mm, 5.5mm, 6mm

AUTO LOADING FOLDING UTILITY KNIFE

#39194 (44130)



- Push the blade release button to remove the old blade, slide the lever back, and push back out to release the new blade

2-IN-1 CLOSE QUARTERS AUTOFEED CUTTER



#36722 (32573)
Cutter w/ Ratchet
Handle

#37365 (86127)
Cutter Only

#38912 (32933)
Ratchet Handle Only

QUICKSTOP FIRE SPRINKLER TOOL



#36841

*Quickly Stops Fire Sprinklers
without Shutting Down
the Sprinkler System!*

- Saves water and reduces damages
- Easy to use, and is reusable
- Single hand operation
- Engineered to align itself to the sprinkler head
- No fire training needed to operate
- Works on recessed heads
- Tested to hold 100% water tight up to 350 PSI
- Designed to release when heated, allowing the tool to function as a temporary sprinkler should a second fire start.

*The ONLY sprinkler tool
that stops 1/2" and 3/4"
upright, pendant, and
sidewall fire sprinklers,
whether they are intact,
damaged, or sheared!*

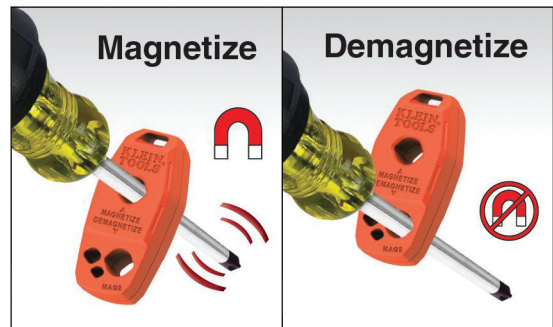


MAGNETIZER / DEMAGNETIZER

#38743



- Makes your screwdriver magnetic using powerful Rare-Earth magnets
- Single swipe operation provides immediate magnetization and demagnetization screwdriver tips and bits
- Fits most screwdrivers including precision screwdrivers, 1/4 Slotted, #2 Phillips and #3 Phillips
- Attaches to tool bags or backpacks with the included stainless steel key ring
- No batteries required



KLEIN KURVE WIRE STRIPPER, WIRE CUTTER, AND CRIMPER

For 10-20 AWG solid, and 12-22 AWG Stranded Wire

#38762



- Wire Stripper strips 10-20 AWG solid, and 12-22 AWG stranded wire
- Multi Tool crimps insulated and non-insulated connectors
- Tip designed to grab, pull and bend the smallest of wires
- Reinforced head reduces flex
- Optimized for ideal leverage when stripping and crimping
- Precision shear-type cutting blades for easier cutting
- Do not use to cut steel wire

SAFETY

STEP-N-PULL® HANDS FREE DOOR OPENER

Enter or exit the room without touching the door handle! Great for restrooms. No touch!

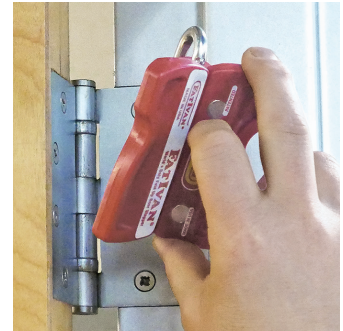
#37663



- Reduce the spread of germs.
- Reduce or eliminate paper towel expense/usage.
- Perfect compliment to automatic hand dryer.
- Low one-time cost - Designed to last the life of the door.
- Works great on commercial latchless doors (i.e. entry door of a laundromat or auto parts store) **when the users hands are full.**

FAT IVAN PORTABLE DOOR STOP

Fast, One-Handed Operation!



Hold open any door in a wide variety of applications! Just slip it over the top, middle, or bottom hinge! Guaranteed to never slip off the hinge. Folds up and stores easily, and can even be carried in your pocket. It's also magnetized!



#14415RED
Red



#14415YEL
Yellow



#14415BLK
Black

MAGNETIC DOOR BARRIERS



#38559 Yellow - For doors up to 51"
Bi-Lingual: English & Spanish



#38554 Orange - For doors up to 36"



#38558 Yellow - For doors up to 36"
#39009 Yellow - For doors up to 51"



#38560 Red - For doors up to 36"
#39008 Red - For doors up to 51"

This Room Has Been Cleaned & Disinfected ~ Just For You!

#39013 White - For doors up to 51"

BLOCK-AIDE - FOR RESTROOM STALL



#16764

4-5/8"H x 3"W x 1-1/2"D

- Made of ABS resin.
- Resists chipping and cracking
- Fits most partition doors.

This clever item slides down between the pilaster and partition door to lock patrons out of a stall that is out of service. It's an effective, sanitary, and more attractive way to keep people out of a stall without them seeing why it is out of service.

A Quick and Innovative Way to Temporarily Close Off a Room or Space

- Fits standard 36" metal door frames, or 51" extra wide frames
- Lightweight and easy to use
- Exceptionally strong magnets attach in seconds
- Made with durable, rot-resistant nylon



SHOWER ROOM



SHOWER UNIT #05807

*American
Standard*



Includes #05801 push button white hand shower, chrome plated 24" wall bar with adjustable mount for tile offset, chrome plated brass swivel connector, and 69" stainless steel hose.



SHOWER VALVE WITH 1/4 TURN STOPS #84266



- Adjustable temp limit stop
- 4 port
- 1/2" copper connection
- Heavy duty, all brass cartridge included



OLD STYLE CHROME ESCUTCHEON (Screws sold separately)

#52817

Chrome Plate

#84392

Escutcheon Screws



SHOWER TRIM KIT #86126

INCLUDES:

- Limit Stop Tube Kit
- CP Handle
- CP Escutcheon
- CP Escutcheon Screws

Other styles available. Call for assistance!



WALL MOUNT HAND SHOWER



#84468
2.5 GPM

#84468-CA
1.5 GPM

#80532
Clamp ONLY

#SP13368
Bar ONLY

Includes chrome plated hand shower, 30" slide bar, drop ell connection, and 69" metal hose.

NOTE: Slide bar is **NOT** to be used as a grab bar.



ORIGINS TUB & SHOWER SYSTEM WITH TEMPTROL VALVE



#55022

#55089

As above but with stops

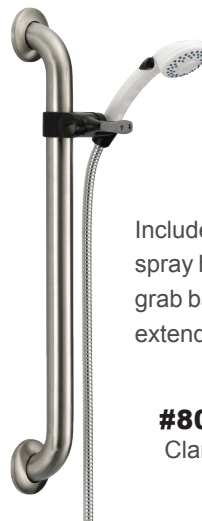


SAFETYMIX TUB & SHOWER SYSTEM

#56139

With Integral Stops

SHOWER UNIT WITH GRAB BAR #53450



*Extra
Heavy
Duty!*



Includes #05801 push button trickle/full spray hand shower, 1-1/2" diameter 24" wall grab bar, slide mechanism and 60" - 82" extendable stainless steel hose.

#80226BLK
Clamp (Black)

#80226
Clamp (White)

MASSAGE ACTION CHROME HAND SHOWER



#05802
2.5 GPM

SHOWER ROOM



DELTA INSTITUTIONAL HAND HELD SHOWER HEAD WITH PUSH BUTTON



#05801

2.5 GPM. White gloss finish. Provides maximum water savings by allowing the shower to pause for lathering and resume to a full spray for rinsing. Can reduce water use by more than 50%.

#05801-CA

As above but with 1.75 GPM



SKIN CARE ADJUSTABLE SHOWER HEAD



#87017

2.0 GPM

#87017-CA

1.5 GPM

Great for hospitals, schools, multi-family housing, and locker rooms.



POWER SPA SHOWER HEAD THREE SETTINGS



#87120

1.75 GPM

#87120-CA

1.75 GPM

Great for hotels, clubs, retro-fit replacement, upscaling or upgrading.



POWER MESSAGE HAND SHOWER FIVE SETTINGS



#87143

1.75 GPM

Great for hospitals, nursing homes, and retro-fit replacement.

Supplied with flexible hose

INSTITUTIONAL ADJUSTABLE SHOWER HEADS



#44524

2.5 GPM, 2-1/4" chrome plated, adjustable shower head made of solid brass.

#44524-CA

Same as above, but 1.5 GPM

ANTIMICROBIAL INSTITUTIONAL HAND HELD SHOWER HEAD



#40310044

2.0 GPM

#40310044-CA

1.75 GPM

White gloss finish with full spray pattern face plate

ANTIMICROBIAL INSTITUTIONAL HAND HELD SHOWER HEAD WITH PUSH BUTTON



#40310045

2.0 GPM

#40310045-CA

1.75 GPM

White gloss finish. Provides maximum water savings by allowing the shower to pause for lathering and resume to a full spray for rinsing. Can reduce water use by more than 50%.

INSTITUTIONAL WALL MOUNT SHOWER HEADS



SYMMONS



#SP3359

2.5 GPM

Adjustable Spray



#50952

2.5 GPM

#50952-CA

1.5 GPM

INSTITUTIONAL MALE THREAD VP SHOWER HEAD INSERT



SYMMONS



#53382

2.2 GPM

For Shower Head
#50952 (above)

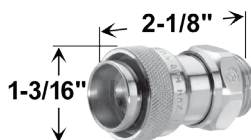
#53382-CA

Same as 53382,
but 1.5 GPM

INSTITUTIONAL MALE THREAD SHOWER HEAD



A WATTS INDUSTRIES CO.



#87040

2.5 GPM

with male thread

#87040-CA

Same as above, but 1.5 GPM

SHOWER ROOM

ECONOMY SHOWER HEAD



#04694

2.5 GPM, economy shower head, chrome plated plastic, with brass ball joint.

#04694-CA

Same as above, but 1.5 GPM

SWIVEL CONNECTOR



#05808

Deluxe all chrome plated brass

SHOWER ARM PIN MOUNT



#05812

Chrome plated brass

DELUXE WALL MOUNT BRACKET



#05811

Deluxe chrome plated brass and mounting screws

LEVER CONTROL DIVERTER VALVE



#04693

Chrome plated brass, 1/2" supply and hose fitting

CHROME PLATED VACUUM BREAKER



#05804

Chrome plated metal hub with plastic threads. Functions in any position. Fits 1/2" connection.

SHOWER HOSE



#54018

69" stainless steel heavy duty shower hose with 1/2" IPS connections

Other Lengths And Types Available

EQUIFLEX STRETCHABLE SHOWER HOSE



#56570

60" to 80"

#56575

100" to 120"

- Ideal for hospitals and nursing homes
- Safely bathe children
- Conveniently wash pets
- Easily rinse bath and shower walls
- Stainless steel double interlock
- Chrome plated brass bell connector and chrome plated brass nut

CHROME PLATED SHOWER ARMS



#44480 6" Length

#44481 8" Length

CHROME PLATED HEAVY DUTY CAST SHOWER ARM FLANGE



#44404 With Set Screw

SHOWER ROOM REPAIR

SHOWER ROD WITH CONCEALED MTG



#SP3588

1" x 36" Shower Rod
Concealed Mount

#16514

1" x 48"
Concealed Mounting

#16177

1" x 60" S.S. Shower Rod
with Concealed Flanges

SHOWER CURTAIN RODS



#SP12856

1" x 40" Stainless Steel
Shower Rod
Less Flanges

#SP12865

1" x 60" Stainless Steel
Shower Rod
Less Flanges



#SP12867

Stainless Steel Concealed Mount
Shower Rod Flange
Two Required Per Rod

HEAVY DUTY SHOWER CURTAIN RODS



#14324

1-1/4" x 72"
Stainless Steel
Shower Rod with
Square Flanges

#14325

1-1/4" x 48"
Stainless Steel
Shower Rod with
Square Flanges

#16198

1" x 72" Heavy Duty
Stainless Steel Shower Rod with Square Flanges

STAINLESS STEEL SHOWER ROD LESS FLANGES



#16510

1" x 48"

#12197

1-1/4" x 48"

CONCEALED SHOWER FLANGE FOR 1" BAR



#16541

CURTAIN ROD FLANGE FOR 1" DIA ROD



#12170

HEAVY DUTY CLOTHES HOOKS



#14212

Concealed Mounting
Satin Nickel Plated Brass



#14259

Exposed Mounting
Satin Nickel Plated Brass

SURFACE MOUNTED TOWEL PIN



#11947

Satin Stainless Steel
2" Flange
3-3/8" Projection

STAINLESS STEEL TOWEL HOOK STRIP



#14330 - 3' with four hooks

#16475 - 4' with five hooks

#16283 - 5' with six hooks

STAINLESS STEEL STRAIGHT GRAB BARS



#14169

12", Exposed Flange

#11323

12", Concealed Flange

#14235

18", Exposed Flange

#14235-C

18", Concealed Flange

#01950

24", Exposed Flange

#01950-C

24", Concealed Flange

#01951

30", Exposed Flange

#01951-C

30", Concealed Flange

#14168

32", Exposed Flange

#14168-C

32", Concealed Flange

#01952

36", Exposed Flange

#01952-C

36", Concealed Flange

#01953

42", Exposed Flange

#01953-C

42", Concealed Flange



*Many Other Custom Types & Sizes Available
Call Us - We Can Do It !*

SHOWER ROOM ACCESSORIES

SOAP DISPENSER BOTTLE

BOBRICK



#11184
34 oz.
Fits Bobrick

LAV MOUNTED SOAP DISPENSER

BOBRICK



#01599
34 fl. oz. Capacity
4" Spout

#11188
34 fl. oz. Capacity
6" Spout

SOAP PUMP ASSEMBLIES

BOBRICK



#55458 4" Spout
#14247 6" Spout

SURFACE MOUNTED SOAP DISPENSER

BOBRICK



#11104

- Stainless Steel
- Satin Finish
- 40 fl. oz. Fill Capacity
- Uses Liquid Soaps

SOAP BOTTLE ADAPTER

BOBRICK



#11279
Black Plastic
Fits #11184 32oz. Bobrick Bottle

NAPKIN DISPOSAL

BOBRICK



#11088
Stainless Steel

#11317
Grey ABS Plastic

#16094
Wax liner disposable bags - 500 ct.

Tampon dispensers available. Call for assistance!

TOILET TISSUE HOLDERS



#01303
Double Holder



#01302
"Deluxe" Double Holder



#01295
"Deluxe"
Paper Holder



#01294
Single
Tissue Holder



#01301
"Control-o-Roll"
Double Holder



#11103
Multi-Roll
Stainless Steel
Paper Dispenser
Surface Mount



#01296
"Control-o-Roll"
Paper Holder



#11178
Two Compartment
Stainless Steel
Multi-Roll Paper
Dispenser Fits Toilet
Partition Panels

TOILET SEAT COVER DISPENSER

BOBRICK



#11173
Stainless Steel

#SP2053
Grey ABS Plastic

TRASH RECEPTACLE

BOBRICK



#11507

- Stainless Steel
- Seamless beveled edge
- Semi-Recessed
- 12 Gallon

SHOWER ROOM ACCESSORIES

ULTRA QUIET GALAXY HAND DRYERS

Quietest Hand Dryer On The Market!

STIEBEL ELTRON



SPECS:

Phase: Single
Voltage: 120v
Wattage: 1850W
Amperage: 15.42A
Min required breaker size: 20A
Min required wire size: 12AWG
Degree of protection: IP 23

FEATURES:

- Ultra quiet sound level: 53 dB(a)
- Dry time: 20-25 seconds
- Automatic, no touch operation with infrared sensor
- Rugged construction
- Brushless motor for long service life
- Elegant, contemporary design
- Easy installation
- No pre-determined run time

#17456

Alpine White

ABS Polycarbonate Housing

Dimensions:

H 9-13/16" x W 6-7/8" x D 9-1/16"

#17457

Alpine White

Cast Aluminum Housing

Dimensions:

H 10-1/2" x W 6-7/8" x D 9-1/16"

#17458

Silver Metallic

Cast Aluminum Housing

Dimensions: H 10-1/2" x W 6-7/8" x D 9-1/16"

MIRRORS

Stainless Steel Channel Frame Mirror



#03500 16" x 20"

#03501 18" x 24"

#15562 18" x 36"

#03502 24" x 30"



Mirror with Shelf

#03503 16" x 20"

#03504 18" x 24"

#03505 24" x 30"



ADA Tilted Mirror



#03506 16" x 30"

#03507 18" x 30"

Custom Sizes And All Stainless Available On Request



XLERATOR® HAND DRYER

*Super-Fast Dry time!
Energy Efficient!*



#15996 (XL-W-110/120)

110/120 Volt

White Epoxy

- 8 second dry time
- Building Green Approved and helps qualify for several LEED® credits
- Automatic sensor operated activation
- Adjustable speed and sound control
- Adjustable heat control
- Visible service LED
- ADA compliant with Recess Kit
- Dimensions: 11-3/4" W x 12-11/16" H x 6-11/16" D

SANIFLOW AUTOMATIC HAND DRYER SATIN STAINLESS STEEL

#17019



- Powerful and energy-efficient hand dryer with an adjustable motor that allows you to choose motor power and noise levels between 58-67 dBA



- Adjustable heating element can save energy
- With an air velocity of up to 110 mph, it can dry hands in 10-15 seconds
- ADA-compliant
- Vandal resistant
- Mounting holes match many other popular dryer brands, making it an excellent choice for retrofit
- Dimensions: 10-1/2"H x 11-1/2"W x 4"D

HANDS-FREE TOWEL DISPENSER

#15678



- Dispenses most non-perforated roll towels up to 8" in diameter and 8" wide.
- Autocut mechanism provides user with an 11" sheet.
- Also features an emergency paper feed.
- Transfer system allows complete usage of stub rolls up to 2-3/4" diameter.
- 20 gauge steel back with transparent cover.
- Requires four D batteries to operate.

GRATES & STRAINERS

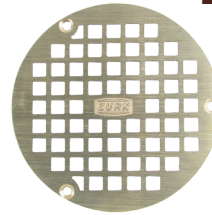
JOSAM REPLACEMENT GRATES Bronze Finish



3 Screws

#40800268	4-5/8"
#40800269	5-1/4"
#68947	6-7/16"
#40800318	7-1/8"
#68945	8-1/8"

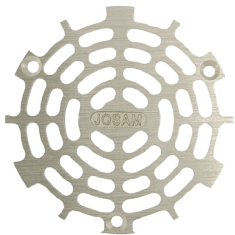
ZURN Z-400 & Z-415 TYPE "B" STRAINER Bronze Finish



3 Screws

#40800270	4-7/8"
#40800271	6"

JOSAM REPLACEMENT GRATES Nikaloy Finish



3 Screws

#68946	5-1/4"
#40800317	6-7/16"
#40800322	7-1/8"
#40800321	8-1/8"

ZURN Z-400 & Z-415 TYPE "N" STRAINER Bronze Finish



3 Screws

#40800404	6-11/16" x 5/32"
#40800405	8-1/2" x 3/16"

SMITH REPLACEMENT GRATES Nickel Bronze Finish



2 Screws

#40800409	4-5/8"
#40800410	5-5/8"
#40800411	6-3/8"

ZURN Z-500 SERIES CAST IRON BAR STRAINER



No Screws

#40800406	6-3/8"
#40800407	8" x 7/16"

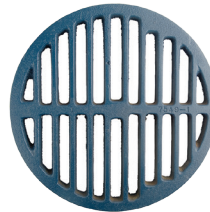
ROUND CAST IRON BAR STRAINER

No Screws



PART #	SIZE	THICKNESS
#44271	3"	3/8"
#44272	4"	3/8"
#68923	5"	3/8"
#53179	6"	1/2"
#68924	7"	1/2"
#51678	8"	5/8"
#68925	10"	3/4"
#44287	12"	3/4"

ZURN Z-700 SERIES CAST IRON BAR STRAINER



No Screws

#40800408	8-1/4"
-----------	--------

ROUND CAST IRON BAR STRAINER

No Screws



PART #	SIZE	THICKNESS
#44264	2-3/4"	3/16"
#44265	3-3/4"	3/16"
#44266	4-7/8"	3/8"
#44268	6-7/8"	3/8"

WADE REPLACEMENT GRATES Bronze Finish



#40800327	4-5/8"	2 screw
#40800328	5-3/8"	3 screw

PLUMBING



"P" TRAP - 17 GAUGE



#04921 1-1/4"

#04922 1-1/2"

The best trap you can buy!



"P" TRAP WITH CLEAN OUT 17 GAUGE



#44012 1-1/4"

#44013 1-1/2"

#44335 2"



"S" TRAP - 17 GAUGE

#04919 1-1/4"

#04920 1-1/2"

"P" TRAP "J" BEND 17 GAUGE



#04923 1-1/4"

#04924 1-1/2"

LAV INSULATION KITS



#05599

White lav insulation kit

#055990S

White lav insulation kit
w/ offset for
wheel chair drain

Other styles available. Call for assistance.

EXTENSION TUBE SLIP JOINT - 17 GAUGE



#04936 1-1/4" x 6"

#04937 1-1/4" x 8"

#04938 1-1/4" x 12"

#04939 1-1/2" x 6"

#04940 1-1/2" x 8"

#04941 1-1/2" x 12"

EXTENSION TUBES - 17 GAUGE THREADED BOTH ENDS



#44025 1-1/4" x 6"

#04824 1-1/4" x 8"

#04825 1-1/4" x 12"

#04826 1-1/2" x 8"

#04827 1-1/2" x 12"

1-1/2" FLANGED SINK TAILPIECE 17 GAUGE



#04821 1-1/2" x 6"

#04822 1-1/2" x 8"

#04823 1-1/2" x 12"

INSTITUTIONAL NON-REMOVABLE CHROME GRID STRAINER

*Heavy
Cast
Brass!*



#04929

1-1/4" x 6"
17 gauge tailpiece

#59553

1-1/4" x 6"
3/8" center opening

#04929EC

Budget

#SP3615

1-1/4" x 6"
Less overflow holes

#44789

1-1/2" x 6"
17 gauge tailpiece

A must for every commercial lavatory!

WHEELCHAIR LAVATORY DRAIN



#05598

- Chrome brass perforated grid drain
- 4-1/2" offset
- 1-1/4" tailpiece

PLUMBING

STAINLESS STEEL INSTA-CLAMPS

The Best Repair Clamp Ever!



PART #	COPPER PIPE SIZE	OD
#81974	1/2"	5/8"
#81975	3/4"	7/8"
#81976	1"	1-1/8"
#81977	1-1/4"	1-3/8"
#81978	1-1/2"	1-5/8"
#81979	2"	2-1/8"
#81980	2-1/2"	2-5/8"
#81981	3"	3-1/8"
#81982	4"	4-1/8"

INSTA-CLAMP PLUMBER'S KIT



INCLUDES:

- One size of each Insta-Clamp™ from 1/2" to 2"
- 12" canvas tool bag
- 24" OD Tape Measure

EPOXY PUTTY



#79072
4 oz.

Easy To Use! One Step! Has 1001 Uses!

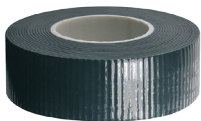
INSULATION TAPE



#79002
2" x 30' x 1/8" Thick

Prevents condensation on cold water or refrigeration lines. Adheres to any surface. Can be molded to valves and fittings. Also insulates hot pipes up to 165° F. Will never dry out or crack.

PIPE WRAP TAPE



#79045 1" x 10'

Use on copper, PVC, galvanized, ABS, and CPVC pipe. Self bonding forms a solid piece of rubber. Works on dirty, wet, oily, and greasy surfaces without adhesives. Also works under water! Works at temperatures from -27° to 212°F.

EMERGENCY PIPE REPAIR CLAMP

*Stop a leaking pipe quickly and effectively
when the water can't be shut off*



#38012
For 1/2" Pipe



#38013
For 3/4" Pipe

CAST SLIP JOINT NUT CHROME PLATED BRASS

Heavy
Cast
Brass!

Includes washer



#04840	1-1/4"
#04841	1-1/2" x 1-1/4"
#04842	1-1/2"
#04843	2"
#04844	2" x 1-1/2"

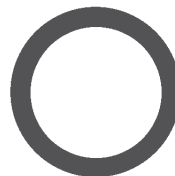
1-1/2" SLIP JOINT WASHER



#04904

TRADE: 1-1/2"M O.D.: 1-11/16"
I.D.: 1-1/2" THICK: 3/32"

"O" RING



#05137

1-1/16 OD x 13/16 ID x 1/8 thick

EQUIPARTS
Repair Parts Specialists

That Hard to Find Part is Right Here!



ELKAY®



YOU KEEP THEM FIT, WE KEEP THEM REFRESHED.

At Elkay®, we want to help keep people and drinking water safe. Our filtered ezH2O® bottle filling stations do just that by meeting the lead reduction requirements for our NSF/ANSI 53 certification. So let's put cleaner, healthier water within everyone's reach.

See the latest at elkay.com/ezh2o.

NIHCA

National Independent Health Club Association



WATER BUBBLER

#50743 (56073C)
Chrome with Guard



LOCK NUT

#50744 (70012C)



PLASTIC CARTRIDGE

#56005 (61314C) with Green Spring
#56005R (61313C) with Chrome Spring



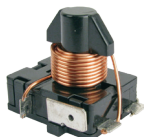
BUBBLER REPAIR KIT

#05793 (92715C)



COMPRESSOR SERVICE KIT

#87080 (98535C)



RELAY

#SP8761 (35959C)



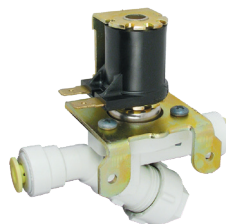
OVERLOAD SWITCH

#58846 (36158C)



COLD CONTROL

#56037 (31513C)



SOLENOID

#05901 (35981C)
Fits the Following Models:

- HTV Series
- EZTL
- LZTL
- EZ & LZ Barrier-Free



SOLENOID VALVE

#80923 (36247C)
New Style - Without cartridge

#84663 (98466C)
With cartridge



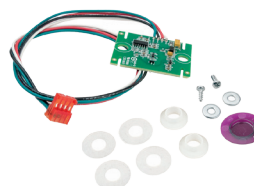
REGULATOR NUT

#82679 (56082C)



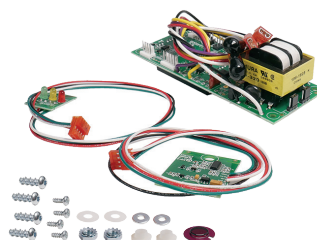
PLASTIC FOUNTAIN CARTRIDGE FOR SOLENOID

#82678 (66654C)



INFRARED SENSOR KIT FOR BOTTLE FILLER

#84692 (98544C)



ELECTRICAL PACKAGE FOR BOTTLE FILLER

#86361 (98543C)



SOLENOID VALVE KIT FOR IN WALL BOTTLE FILLERS 115V

#18729



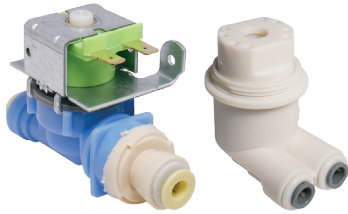
NOZZLE KIT FOR BOTTLE FILLER

#66313 (98546C)

ELKAY REPAIR

ELKAY®

SOLENOID VALVE & REGULATOR ASSEMBLY KIT



#12801
(1000004572)

REGULATOR HOLDERS & NUTS



#54531 (50986C)

#54961 (15005C)
Nut for Regulator Holder #54531
Coarse and Fine Thread

PUSH BUTTON ASSEMBLY



#83743
(98536C)

REGULATOR HOLDERS & NUTS



#50895 (50985C)
Uses nut #05731

#05731 (029970-001)
Nut for Regulator Holder #50895
Fine Thread

REGULATOR & HOUSING KIT



#87081 (98732C)
For Cooler With
Push Bar

PUSH BUTTON FOR BUBBLER



#05730 (40048C)



CHROME HEX COVER NUT

#05729 (40089C)

REGULATOR & HOUSING KIT



#86463 (98731C)
For Cooler With
Push Button

CHROME HEX NUT



#56024 (40169C)
For Regulator Housing



BRASS HEX NUT

#54289 (40045C)
For Regulator Housing

REGULATOR & HOUSING KIT



#87082 (98733C)

Not Common for Outdoor Units

VANDAL RESISTANT BUBBLER KIT



#84021 (97446C)

ELECTRICAL SWITCH



#40700081 (98869C)

REGULATOR KIT WITH HOLDER AND NUT



#69580 (100001913)
Green Spring Cartridge for
Coolers without Solenoids
EZ/HTV Series prior to 2008

#12807 (1000004564)
Cartridge for Coolers with Solenoids
EZ/HTV Series after 2008

FOUNTAIN IN-LINE STRAINER



#56010 (55996C)
1/4 outlet x 3/8 inlet



SIDE PUSH BAR GREY

#81331 (56002C)

ELKAY FRONT PUSH BAR



#05966 (55999C)

Used on models
EZ and EZF

#12806 (10000001600)
2 Pack

PUSH BAR KIT



#87083

(98734C)

UPPER SHROUD WITH FRONT AND SIDE PUSH BARS



#05976 (56229C)

FOUNTAIN FRONT PUSH BAR



#56055 (51559C)

Grey

FRONT FOUNTAIN PANEL



#84945 (26597C)

PUSH BAR SPRING

#40700080 (75621C)

Fits HTV Series Barrier-Free Water Coolers



FOUNTAIN BLOCK PIVOT

#56021 (51531C)



PLASTIC FOUNTAIN PIVOT DRIVE PIN

#56023 (50212C)

PUSH BAR SERVICE KIT



#84947

(98537C)

FRONT PUSH BRACKET FOR ELKAY DRINKING FOUNTAIN



#05782

(22900C)



FOUNTAIN STRAINER & FERRULE

#SP9352 (45336C)



FOUNTAIN TAILPIECE GASKET

#SP9353 (50074C)



DRAIN ASSEMBLY

#59851 (LK464)

Used on models
ER, ERH and HRF

BOTTLE FILLER REPAIR PARTS



#12847 (1000004573)

Solenoid Valve Assembly



#68235 (1000001609)

Wiring Harness from
Basin to Bottle Filler

ELKAY RETROFIT BOTTLE FILLERS

FILTERED NON-REFRIGERATED BOTTLE FILLER



#48206 (LMASMB)



- Includes filter
- Stainless Steel Finish
- Non-Refrigerated
- Mechanical push button activation. Great for limited wall depth applications where electricity is not available.
- Innovative Green Ticker™ counts bottles saved from waste
- Laminar flow provides minimal splash
- Fill Rate: 1.5 GPM
- Silver antimicrobial protection on key plastic components inhibits the growth of mold and mildew
- Can be paired with a remote chiller

FILTERED BOTTLE FILLING STATION RETRO KIT



#83462 (LZWSRK)
Filtered

#86394 (EZWSRK)
Non-Filtered

#84553E (51300C)
3000 Gallon
Replacement Filter



The Elkay EZH2O® Bottle Filling Station delivers a clean, quick water bottle fill and enhances sustainability by minimizing our dependency on plastic bottles. Designed to retrofit existing 115V push bar activated EZ and LZ style water coolers.

HANDS FREE NON-REFRIGERATED SURFACE MOUNTED BOTTLE FILLER



#87679 (LZWSSM)
Filtered

#47899 (EZWSSM)
Non-Filtered



- LED filter status indicator on #87679
- Stainless Steel Finish
- Non-Refrigerated
- Innovative Green Ticker™ counts bottles saved from waste
- Laminar flow provides minimal splash
- Fill Rate: 1.5 GPM
- Silver antimicrobial protection on key plastic components inhibits the growth of mold and mildew
- Can be paired with a remote chiller

HANDS FREE NON-REFRIGERATED WALL MOUNTED BOTTLE FILLER



#89288 (LZWSR)
Filtered

- LED filter status indicator
- Non-Refrigerated
- Innovative Green Ticker™ counts bottles saved from waste
- Laminar flow provides minimal splash
- Fill Rate: 1.5 GPM
- Silver antimicrobial protection on key plastic components inhibits the growth of mold and mildew
- Can be paired with a remote chiller



REPLACEMENT FILTERS FOR BOTTLE FILLERS



#84553E (51300C)
Single Filter – 3000 Gallons
For EZH2O Bottle Fillers w/ Watersentry®



#SP5866 (51299C)
2 Pack – 1500 Gallons
For EWF172 Watersentry® 6000

#48478 (51300C)
Same as #84553E, but
individually boxed

ELKAY BOTTLE FILLERS

EZH2O® FILTERED BOTTLE FILLING STATION WITH SINGLE ADA COOLER



#03586 (LZS8WSVRSK)
Stainless Steel Finish

The Elkay EZH2O® is a complete filtered cooler and bottle filling station that delivers a clean, quick water bottle fill in a space saving, ADA compliant design. It enhances sustainability by minimizing our dependency on plastic bottles.

- Vandal-resistant bubbler features chrome plated integral hood guard to prevent contamination from other users, airborne deposits, and tampering.
- Bubbler has easy-to-operate push-bar activation.
- Bottle filler has a sanitary, no-touch sensor activation with automatic 20-second shut-off timer
- Fill rate is 1.1 GPM.
- Cooling capacity: 8 GPH.
- LED filter status indicator showing when filter change is necessary.
- Green Ticker shows the number of 20oz. plastic water bottles saved from waste.
- Laminar flow provides a clean fill with minimal splash.
- Silver ion antimicrobial protection on key plastic components inhibits the growth of mold and mildew.
- The included 3000 gallon filter is certified to NSF 42 and 53 for lead, Class 1 particulate, chlorine, taste, and odor reduction.
- Real drain system eliminates standing water.

EZH2O® FILTERED BOTTLE FILLING STATION WITH SINGLE ADA COOLER



#03585 (LZS8WSLK) **#88095** (LZS8WSSK)
Light Gray Granite Finish Stainless Steel Finish

The Elkay EZH2O® is a complete filtered cooler and bottle filling station that delivers a clean, quick water bottle fill in a space saving, ADA compliant design. It enhances sustainability by minimizing our dependency on plastic bottles.

- Bubbler has easy-to-operate push-bar activation.
- Bottle filler has a sanitary, no-touch sensor activation with automatic 20-second shut-off time.
- Fill rate is 1.1 GPM.
- Cooling capacity: 8 GPH.
- LED filter status indicator showing when filter change is necessary.
- Green Ticker shows the number of 20oz. plastic water bottles saved from waste.
- Laminar flow provides a clean fill with minimal splash.
- Flexi-Guard Bubbler provides a flexible, antimicrobial mouth guard to protect against injury and microorganisms.
- Silver antimicrobial protection on key plastic components inhibits the growth of mold and mildew.
- The included 3000 gallon filter is certified to NSF 42 and 53 for lead, Class 1 particulate, chlorine, taste, and odor reduction.
- Real drain system eliminates standing water.
- Rated for indoor use.

OASIS FOUNTAIN REPAIR



BUBBLERS



#55704
(032799-005)
Bubbler with
Built-In Regulator
w/Flexible Guard
For P8AM

#83375
(031760-005)
Bubbler
Less Regulator
w/Flexible Guard
For P8AC

DIAL-A-DRINK BUBBLERS



#05624 (030774-016)
C.P. Brass
Water Bubbler
(DIAL-A-DRINK BUBBLER)



#05624PL (030774-006)
Water Bubbler with
Plastic Cover and Flex Guard
(DIAL-A-DRINK BUBBLER)

UNIVERSAL BUBBLER



#05606
Bubbler Valve

**NO
LEAD!**

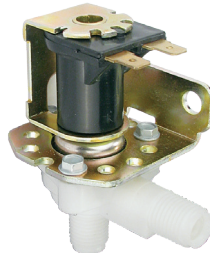
#05606FLEX
As above,
with flex-guard



SOLENOIDS



#81212
(029819-001)



#81193
(029819-002)

*Many other types in stock.
Call with model number for further assistance.*

BUBBLERS



#05611
(023401)
KNOB
Used On
#05624 Bubbler



#SP3094
(031765-001)
**WHEEL ARM
ASSEMBLY**
For P8AM



#57997
(029967-005)
**OEM FOUNTAIN
CARTRIDGE**
For P8AC



#05615
(013059-005)
**SERVICE
STEM UNIT**
Used In #05624
Bubbler and P8AM
Water Coolers



#53710
(026824-019)
HEX NUT
For #55704 &
#83375



#51831
(030029-005-SP)
**NOZZLE &
REGULATOR ASSY.**
Uses 5/64 Hex Key
for Adjustment
For P8AM



#05857 (032046-001)
VALVE & BODY ASSEMBLY
For P8AM



#54133 (032045-002)
BRASS VALVE BODY
For P8AM
#54133NP (032045N-002)
NICKEL PLATED VALVE BODY
For P8AM

UNIVERSAL CARTRIDGE



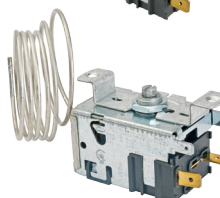
**NO
LEAD!**

#05605
Stainless steel cartridge fits
Elkay, Halsey Taylor, Cordley
Hayes, Haws, Temprite, and
Westinghouse Bubblers.

COLD CONTROLS



#05912 (027040-039)
Used in P8AC Units



#55462 (027040-007)
Used in P8AM Units

NON-FILTERED BARRIER-FREE VERSACOOLER II WITH VERSAFILLER



#03576 (PG8SBF)

Powder Coated
Greystone Finish

#03576SS (PG8SBF-SS)

As above, but all
Stainless Steel

#66194 (PGSBF)

As above,
but non-refrigerated

- Push button mechanical activation of Versafiller
- Built-in 100 micron strainer stops particles before they enter the waterway
- Waterways are lead-free in materials and construction
- Cooling capacity: 8 GPH
- Flexible one-piece water saver bubbler
- Stainless steel top and heavy duty galvanized steel frame
- High efficiency cooling system
- VersaFiller components contain Freshield®, which utilizes a silver-based antimicrobial compound that reduces the growth of microorganisms and mildew to protect the surfaces from discoloration, odors, and degradation.
- Four antimicrobial copper push pads on cooler
- External stream height adjustment on cooler
- Basin is designed to eliminate splashing and standing water.
- Powder coated sandstone finish

FILTERED VANDAL RESISTANT BARRIER-FREE VERSACOOLER II WITH HANDS FREE BOTTLE FILLER



#46982 (PGVF8EBF)

Stainless Steel Finish

#88093 (PGV8EBF)

As above but non-filtered

#68897 (PGVEBF)

As #88093,
but non-refrigerated

- VersaFilter for taste, odor, lead, and chlorine reduction
- Built-in 100 micron strainer stops particles before they enter the waterway
- Vandal-resistant bubbler with flexible guard
- Vandal-resistant mechanical front push button
- Vandal-resistant fasteners
- Galvanized steel louver and bottom screen
- Waterways are lead-free in materials and construction
- Cooling capacity: 8 GPH
- Stainless steel top and heavy duty galvanized steel frame
- High efficiency cooling system
- Hands-free Versafiller with built-in bottle counter
- Stainless steel finish
- Basin is designed to eliminate splashing and standing water.

K-12 RETROFIT BOTTLE FILLER



#46739 (PWFSBF-K12)



*Filter can
be changed
easily!*



- Comes with certified 3000 gallon lead reduction filter
- Large 13" alcove fits most large sports water bottles
- Cabinet won't rust or dent
- Mechanical activation button dispense water even during a power outage
- Large antimicrobial copper push button is easy to push and reduces the transfer of pathogens
- Filter is mounted inside the bottle filler for easy replacement
- Filter can be accessed easily by only having to remove 2 screws (instead of 8)
- Bottle filler is ADA compliant when retrofitted onto PG8AC or P8AM units
- Can be retrofitted onto ADA drinking fountains as far back as 1995

NON-FILTERED PUSH BUTTON VERSAFILLER BOTTLE FILLER RETROFIT KIT



#03575 (PWSBF)

Brushed Stainless
Steel Finish

- Push button mechanical activation
- Retrofits either the P8AC or P8AM
- Waterways are lead-free in materials and construction
- Heavy duty steel frame
- Surface Mount Frame Assembly
- VersaFiller alcove and activation button contain Freshield®, which utilizes a silver-based antimicrobial compound that reduces the growth of microorganisms and mildew to protect the surfaces from discoloration
- ADA compliant when properly installed
- Brushed stainless steel finish

ONLY ASI CAN SUPPLY EVERYTHING FOR YOUR WASHROOM

(EVERYTHING BUT THE WASHROOM SINK)



Welcome to the new ASI—the world's leading manufacturer of commercial partitions, washroom accessories, lockers, and visual display products. So what makes ASI so unique? Only ASI designs, engineers, and manufactures fully-integrated solutions. So all of our products work together seamlessly. Welcome to choice, welcome to innovations, welcome to the new ASI. For product information, visit asigroup.us. To order through Equiparts, call 1.800.442.6622 or visit: equiparts.net

ASI Group
Integrated Building Products



**COLOR-THRU AND
BLACK CORE PHENOLIC**

10 YR. WARRANTY

**MOISTURE GUARD™
PLASTIC LAMINATE**

5 YR. WARRANTY

**STAINLESS
STEEL**

5 YR. WARRANTY

**POWDER COATED
STEEL**

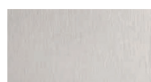
3 YR. WARRANTY

**SOLID PLASTIC
(HDPE)**

15 YR. WARRANTY

COLOR SELECTIONS

STAINLESS STEEL



Satin #4
(Standard)



Diamond

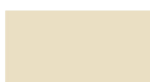


Leather

POWDER COATED STEEL



White 2129



Almond 2103



Gray 2125



Khaki 2115



Charcoal 2123



Black 2127



Royal Blue 2135



Burgundy 2148



Sage 2141



Red 2145



Dark Khaki 2109



Azure 2101



Metallic Silver 2171



Pepper Dust 3590



Sandy Beach 2150

New from ASI Global Partitions

Ultimate Privacy™ collection—now available in Stainless/Powder Coated Steel, Phenolic, and Solid Plastic in a variety of configurations

Features doors and panels up to 72" and No-Sight System (no sight strip and continuous hinge side filler) or Zero-Sightline™ routed edges that eliminate sightlines into the compartment.

Exclusive Moisture Guard™ Plastic Laminate in 48 colors

Moisture Guard™ Edge Banding creates a seamless beveled profile that eliminates any unsightly black lines that appear in standard Plastic Laminate. ASTM tests confirm 3X greater durability with increased resistance to moisture and humidity than standard Plastic Laminate. Backed with an industry leading 5 year warranty.

MOISTURE GUARD™ PLASTIC LAMINATE



Afternoon Nap 9120



Cherry 9954



Ebony 9500



Mahogany 9939



Weathered Ash 9842



Green Slate 5093



Mission White 1010



Dove Gray 3010



Black 2000



Spectrum Blue 5051

SOLID PLASTIC (HDPE)



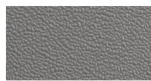
Cream 9235



Ivory Essence 9500



Black 9205



Charcoal 9237



Blue 9509



Grey 9200

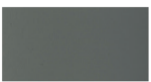
COLOR-THRU PHENOLIC



Hazel 4450C



Burgundy 5450C



Smoke 8450C



Navy Blue 7450C

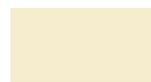


Black 2000C



Fog 3450C

BLACK CORE PHENOLIC



Almond 4000



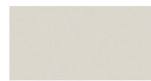
Dove Gray 3010



Desert Zephyr 4583



Burnt Strand 5107



Silver Gray 3000



Weathered Ash 9842

NOTE: Due to variances in printing, these colors cannot be considered exact matches. Call for color chart.

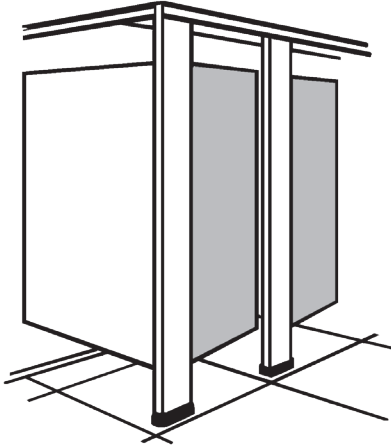
To view the full selection of colors and finishes, visit asi-globalpartitions.com.

To order the industry's leading toilet partitions, visit equiparts.net or call 1.800.442.6622

PARTITION DOORS



MATERIAL: POWDER COATED

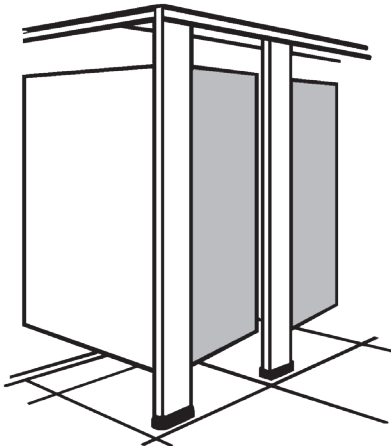


SIZE	WHITE	GRAY	ALMOND	SPECIFY COLOR
24"	#17119	#17280	*	*
26"	#17120	#17135	#17120	#16009
30"	*	*	*	#15209
34"	*	*	*	#16414
36"	#17121	#17136	#17121AL	#15210

**If size and/or color is not listed above, call for assistance.*



MATERIAL: POLYMER (HDPE)

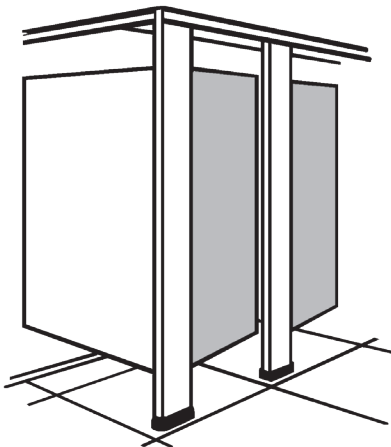


SIZE	GRAY	CREAM	MOCHA	GRAY W/ VAULT HINGES
24"	#17129	#17129CR	#17129MO	#17023
26"	#17130	*	*	*
34"	#17296	*	*	*
36"	#17131	#17131CR	#17131MO	#17024

**If size and/or color is not listed above, call for assistance.*



MATERIAL: PHENOLIC



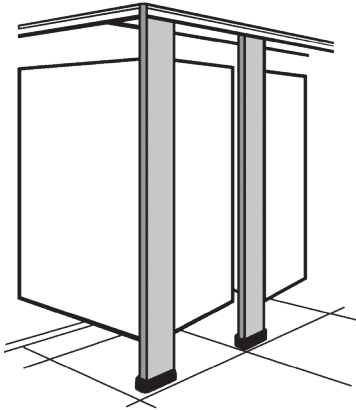
SIZE	DOVE GRAY
24"	#17126
26"	#17127
36"	#17128

**If size and/or color is not listed above, call for assistance.*

PARTITION PILASTERS



MATERIAL: POWDER COATED

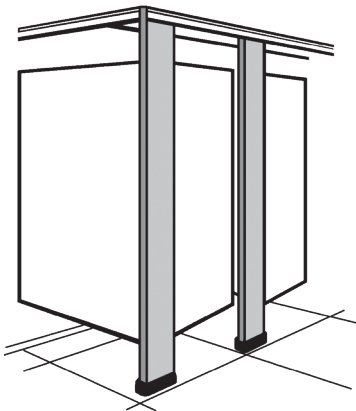


**If size and/or color is not listed,
call for assistance.*

SIZE	GRAY	WHITE	ALMOND	CHARCOAL	SPECIFY COLOR
3"	#17220	#17187	*	*	*
4"	#17221	#17188	*	*	*
5"	#17222	#17189	*	*	#14494
6"	#17230	#17190	#17217	*	#17017
7"	#17225	#17192	*	#SP16882	*
8"	#17224	#17193	*	*	*
10"	#17284	#17182	*	*	*
12"	#17218	#17183	*	*	#14496
16"	#17227	#17299	*	*	*
18"	#17219	#17184	*	*	*
22"	#17228	#17185	*	#SP16881	*
24"	#17229	#17186	*	#SP16880	*



MATERIAL: POLYMER (HDPE)

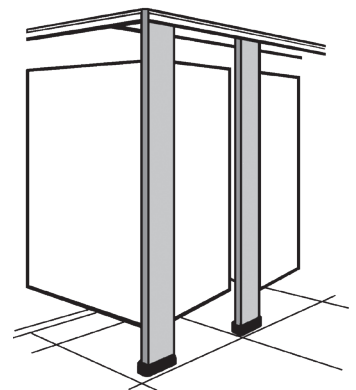


**If size and/or color is not listed,
call for assistance.*

SIZE	GRAY	CREAM	MOCHA
3"	#17208	*	#17208MO
4"	#17209	#17209CR	*
5"	#17210	*	*
6"	#17211	*	*
7"	#17213	#17212CR	#17213MO
8"	#17214	*	#17214MO
10"	#17021	#17203CR	#17203MO
12"	#17204	*	*
18"	#17205	#17205CR	*
20"	#17297	*	*
22"	#17206	*	#17206MO
24"	#17022	#17233	#17207MO



MATERIAL: PHENOLIC



**If size and/or color is not listed,
call for assistance.*

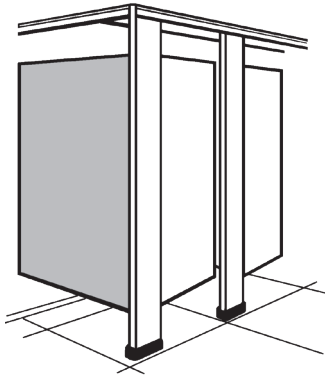
SIZE	GRAY	DOVE GRAY
3"	#17240	#17196
4"	#17241	#17197
5"	#17242	#17198
6"	#17243	#17199
7"	#17245	#17201
8"	*	#17202
10"	#17235	*
12"	#17236	*
18"	#17237	*
22"	#17238	*
24"	#17239	*

PARTITION PANELS



MATERIAL: POWDER COATED

All 58"
in height



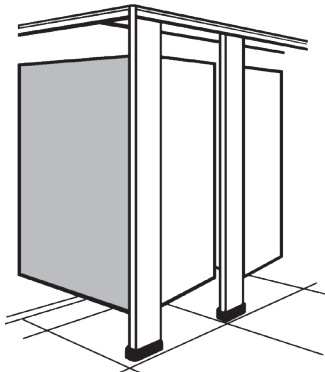
**If size and/or color is not listed,
call for assistance.*

SIZE	WHITE	GRAY	ALMOND	SPECIFY COLOR
22"	#17161	*	*	*
27.5"	*	#17156	*	*
33.5"	*	#17301	*	*
34"	#17162	#17283	*	*
39.5"	#17059	*	*	*
55"	#17163	*	*	*
57.5"	*	*	*	#SP12459
58"	#17159	#17158	#17158AL	*
59.5"	*	*	*	#SP12658
60"	#17160	#17157	#17157AL	*
64.5"	#17105	*	*	#SP14276
69.5"	#17300	#17293	*	#SP13158
75.5"	#17058	*	*	*



MATERIAL: POLYMER (HDPE)

All 55"
in height



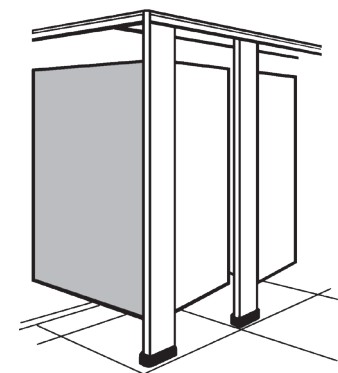
**If size and/or color is not listed,
call for assistance.*

SIZE	GRAY	CREAM	MOCHA
22"	#17175	*	*
34"	#17176	*	*
55"	#17177	*	*
58"	#17178	#17180	*
60"	#17179	*	*
64.5"	#SP17242	#SP17242CR	#SP17242MO
75.5"	#17298	*	*



MATERIAL: PHENOLIC

All 58"
in height



SIZE	GRAY	DOVE GRAY
22"	#17170	#17165
34"	#17171	#17166
55"	#17172	#17167
58"	#17173	#17168
60"	#17174	#17169

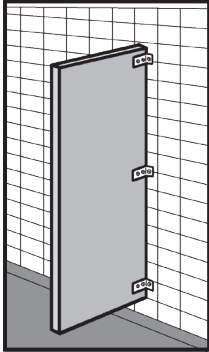
PARTITION SCREENS



URINAL SCREENS

All Sizes 18" x 48" • Other Sizes Available! • Must Specify Color!

Wall Hung



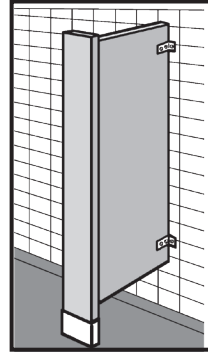
#15211

18" x 48" Powder Coated Steel Urinal Screen with Hardware

#15211HDP

18" x 48" High Density Polymer Urinal Screen with Hardware

Floor Braced Screen with Pilaster



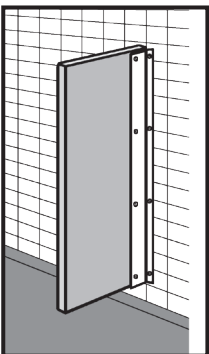
#15212

18" x 48" Powder Coated Steel Urinal Screen with Pilaster

#15212HDP

18" x 48" High Density Polymer Urinal Screen with Pilaster

Wall Hung with Continuous Bracket



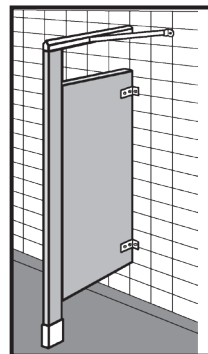
#15213

18" x 48" Powder Coated Steel Urinal Screen with Continuous Bracket

#15213HDP

18" x 48" High Density Polymer Urinal Screen with Continuous Bracket

Floor Supported with Headrail



#15214

18" x 48" Powder Coated Steel Urinal Screen with Headrail

#15214HDP

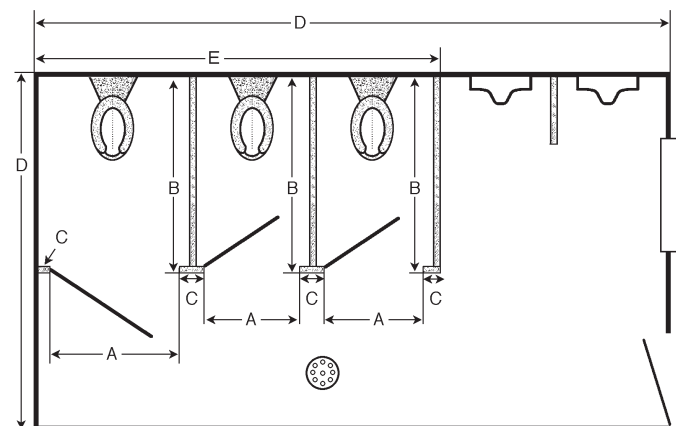
18" x 48" High Density Polymer Urinal Screen with Headrail

PARTITION CHECK LIST

WHEN ORDERING OR QUOTING PARTITIONS, PLEASE SUBMIT THE FOLLOWING INFORMATION ON A DRAWING OF THE LAYOUT OF THE ROOM:

1. Material of new partitions
2. Color of new partitions
3. Specify headrail braced, ceiling hung, or floor supported
4. Finished wall dimensions of room
5. C x C dimensions between fixtures (if possible)
6. A.D.A. Requirements
7. Door swings
8. Location of obstructions (radiators, windows, floor drains, etc.)
9. If ceiling hung, must specify floor to ceiling height (F)

BELOW IS AN EXAMPLE OF WHAT THE FINISHED PICTURE SHOULD LOOK LIKE:



A = DOOR OPENING DIMENSIONS

B = WALL TO FRONT OF PILASTER DIMENSIONS

C = ALL PILASTER WIDTHS. SPECIFY IF WALL HUNG.

D = ROOM DIMENSIONS

E = WALL TO END OF PARTITIONS (Total Partition Width)

F = FLOOR TO CEILING HEIGHT (Not illustrated)

PARTITION LATCHES



UNIVERSAL SLIDE LATCH

#01440

2-3/4" C x C

#01440SS

As above in Stainless Steel



SLIDE LATCH STAMPED STAINLESS STEEL

#14022

1-7/8" C x C



UNIVERSAL SLIDE LATCH

#01441

3-1/2" C x C

#01441SS

As above in Stainless Steel



ALUMINUM SLIDE LATCH

#15113

3-1/2" C x C

Santana



SLIDE LATCH

#14019

2-3/4" C x C

With Offset Slide Bar

#14019SS

2-3/4" C x C

As above in Stainless Steel



CONCEALED LATCH SET

#01801

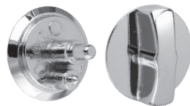
Fits Mills



SLIDE LATCH STAMPED STAINLESS STEEL

#12155

3-1/2" Centers



CONCEALED SLIDE LATCH

#01803

Fits Various Brands

#16106

Brushed Finish

For ADA use **#14075**



ADA LEVER LATCH SET

#14075

Fits Various Brands
(Replaces **#01803**)

#16107

As above, Brushed Finish



ADA LEVER LATCH SET W/ TORX SCREW



#15884

Fits Global
Fits 1" Metal Doors



#15884S

As above in Stainless Steel



NEW STYLE 3 PIECE CONCEALED LATCH SET

#11594

Fits Sanymetal

Includes removable pin.
For new style doors only.

CONCEALED LATCH SET W/ TORX SCREW



#15885

Fits Global
Fits 1" Metal Doors

#15885S

As above in Stainless Steel

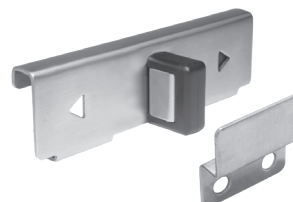


CONCEALED SLIDE LATCH

#14074

Fits General/Knickerbocker

For ADA stalls,
use **#14112**



SLIDE LATCH WITH KEEPER

#16461

1-1/4" C x C

PARTITION LATCHES & KITS

SURFACE MOUNTED SLIDE LATCH



#16048

Brushed Chrome
2-3/4" Centers

#16809

As above, but
Chrome Plated

SURFACE MOUNT SLIDE LATCH STAINLESS STEEL



#16581

1-3/4" x 1-1/2" C x C

OLD STYLE CONCEALED LATCH SET



#1422-23

Fits Sanymetal Only
For Door w/Non-Removable Pin
*Replaces escutcheon stamped # 8818
and handle stamped # 8809*

HADRIAN LATCH KNOB AND COVER



#15249ADA

As above for ADA



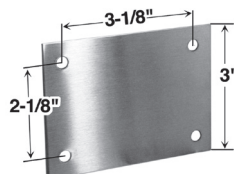
CONCEALED LATCH DOOR SET ZAMAC



#17116

STAINLESS STEEL HOLE COVER PLATE

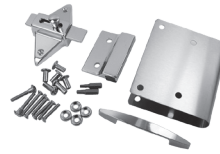
#14024



Eliminate concealed latches and retrofit slide latches. Cover outside hole in door. Use **#01441** latch and **#01449** strike and keeper.

Comes with mounting screws

DOOR FIX-IT KITS



#16135

**Outswing Door Latch
Fix-It Kit with Pull**

For 1" Metal Rounded Doors
For Stainless Steel, use **#16135SS**



#16136

**Inswing Door Latch
Fix-It Kit**

For 1" Metal Rounded Doors
For Stainless Steel, use **#16136SS**



#16148

**Inswing Door Latch
Fix-It Kit**

For 1" Square Edge Doors



#16150

**Outswing Door Latch
Fix-It Kit with Pull**

For 1" Square Edge Doors



#16151

**Stainless Steel Bumper Hook
& Plate Fix-It Kit**



#16836

**Fix-It Kit For Square
Edge Door with Pull**

For 3/4" Square Edge Doors



#14436

**Old Style ADA
Metal Partition Door
Repair Kit**

OUTSWING ADA DOOR KITS

#17122

For Plastic Partition

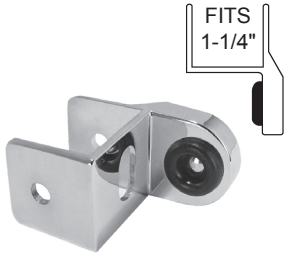
- (2) Hinges
- (2) Hinge Inserts
- (2) Nylon Cams
- (2) Nylon Pintels
- (2) Stainless Steel Hinge Pins
- (1) Universal Slide Latch
- (1) Stop & Keeper
- (5) 1-1/4" Step Bolts
- (2) 1" Step Bolts
- (2) 1" Countersunk Screws
- (7) 5/8" Step Nuts
- (4) 5/8" Screws
- (1) Coat Hook
- (1) Outswing Bumper
- (2) Door Pulls

#17123

For Polymer Partition

- (1) Top Hinge
- (1) Bottom Hinge
- (2) Door Pulls
- (1) Stop & Keeper
- (1) Slide Latch
- (4) 1-1/4" Step Bolts
- (9) 1" Step Bolts
- (4) 5/8" Screws
- (1) Coat Hook
- (1) Outswing Bumper
- (8) 3/8" Step Nuts
- (1) 5/8" Step Nut
- (1) Cam
- (1) Tooth Washer
- (1) Hinge Nut

PARTITION STRIKE & KEEPERS



#14002
Used with Concealed Latch
Round Bar
For Laminate Only

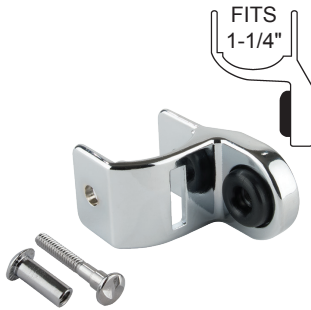
#14002SS
As above in
Stainless Steel



#14017
Used with Round Bar
Concealed Latch
For Laminate Only
1-1/2" Centers

#14017SS
As above in
Stainless Steel

#14601
As above
for 1"



#14008
Fits Metpar
Used With Concealed Latch
Flat Bar



#01444-45
Strike & Keeper
For Slide Latch
1-1/2" Centers

#01444SS
Keeper Only
Stainless Steel

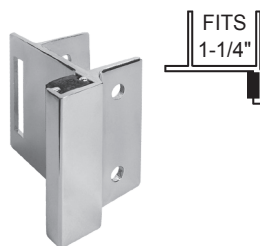
#01445SS
Strike Only
Stainless Steel

For any thickness or material



#01437
Used With Concealed Latch
Round Bar

#11437
As above in
Stainless Steel

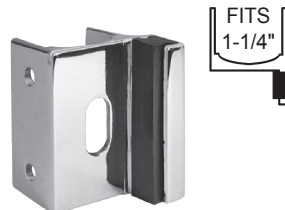


#01450
Used with Slide Latch
1-1/2" Centers
For Laminate Only

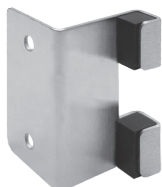
#01450SS
As above in Stainless Steel



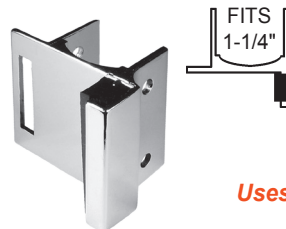
#16501
Keeper for Inswing Strikes
Stainless Steel
1-7/8" Centers
Use with Slide Latch #14022



#11796
Fits Accurate
Chrome Plated
For 1-1/4" Thickness
1-1/2" Centers



#16502
Stainless Steel
For Outswing Doors
For 1" Thickness
1-7/8" Centers



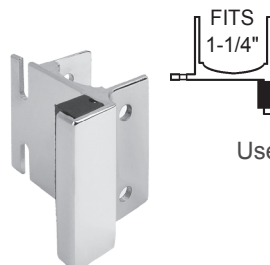
#01449
Used With Slide Latch
1-1/2" Centers
For Steel Partitions

*Uses Replacement Bumper #15082
N/A in Stainless Steel*



#14005
Used With Slide Latch
For Any Thickness or Material
1-1/2" Centers

#14005SS
As above in
Stainless Steel



#01451
Used With Throw or Slide Latch
For Steel Partitions
1-1/2" Centers



PARTITION HINGES

STAINLESS STEEL SURFACE MOUNT SQUARE PARTITION HINGE SET



#01447

Right Hand Inswing
Left Hand Outswing

#01448

Left Hand Inswing
Right Hand Outswing

Includes Top & Bottom Hinges & Fasteners

STAINLESS STEEL SURFACE MOUNT ROUND PARTITION HINGE SET



#14104

Right Hand Inswing
Left Hand Outswing

#14105

Left Hand Inswing
Right Hand Outswing

Includes Top & Bottom Hinges & Fasteners

FOR GENERAL PARTITION ALUMINUM WRAP AROUND HINGE SET

For 3/4" Door & 1" Pilaster

Must Specify Handing



#15479

Contains 2 Hinges

#15477

For ADA Door
Contains 3 Hinges

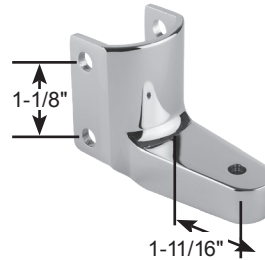
REPLACEMENT
PINS - NATURAL

#15478

REPLACEMENT
ADA PINS

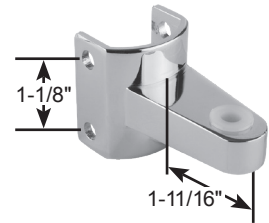
#15478ADA

FITS GENERAL & KNICKERBOCKER



#14061

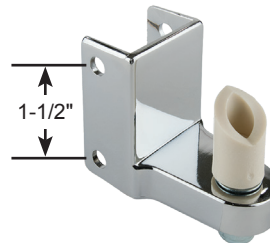
Bottom Hinge
1-1/4" Thickness



#14062

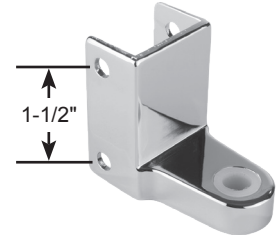
Top Hinge
1-1/4" Thickness

FITS GENERAL & KNICKERBOCKER



#11084

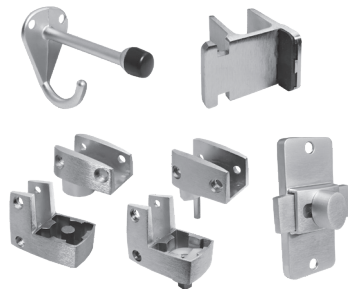
Bottom Hinge For
1-1/4" Laminate
Uses pintel #14084



#11484

Top Hinge For
1-1/4" Laminate
Uses top pin #14054

INSWING VAULT HINGE KIT



#16196

Includes:

- Bumper Hook
- Top and Bottom Hinge Set
- Strike & Keeper
- Latch

PARTITION HINGE PINTELS



#14083

PINTEL - 10/32 Thread
Fits Knickerbocker
& General



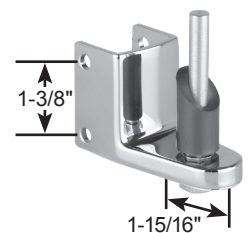
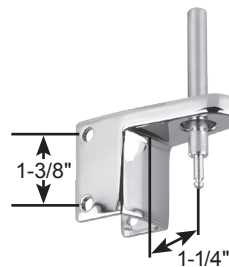
#14084

PINTEL - 5/16-18 Thread
Fits Global & General

FITS MILLS

#14064

Set of Hinges with Pins
1-1/4" Thickness



FITS SANYMETAL

#01420

Bottom Hinge Assembly



PARTITION REPAIR

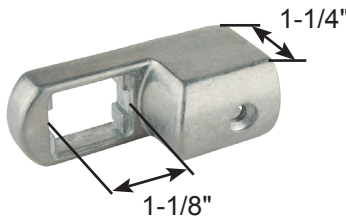
FITS AM. SANITARY, FIAT, GENERAL, & GLOBAL

#14051

3/8" Diameter
3" Long



BOTTOM BRACKET



#14119

Fits Global & General
Unpainted

#14119CP

Fits Global & General
Chrome Plated

CONTINUOUS BRACKET



#14010

54" Length
1" Thickness
Aluminum

#14012

57" Length
1/2" Thickness
Aluminum

#12399

57" Length
3/4" Thickness
Stainless Steel

CONTINUOUS "F" BRACKET



#16500

54" Length
1-1/4" Thickness
Aluminum

#14011

54" Length
1-1/4" Thickness
Stainless Steel

"U" BRACKET



#01479

1" Thickness
1-5/16" Height
Includes Fasteners

#14381

1-1/4" Thickness
1-5/16" Height
Includes Fasteners

#16847

3/4" Thickness
1-5/16" Height
Includes Fasteners

SINGLE EAR WALL BRACKET



#12439

1/2" Thickness
2-1/2" Height
Includes Fasteners

#01470

1" Thickness
2-1/2" Height
Includes Fasteners

#01473

1-1/4" Thickness
2-1/2" Height
Includes Fasteners

#01469

1" Thickness
3-1/2" Height
Includes Fasteners

#01475

1-1/4" Thickness
3-1/2" Height
Includes Fasteners

#01473SS

As above in
Stainless Steel

DOUBLE EAR WALL BRACKET



#12440

1/2" Thickness
2-1/2" Height
Includes Fasteners

#01462

1" Thickness
2-1/2" Height
Includes Fasteners

#01465

1-1/4" Thickness
2-1/2" Height
Includes Fasteners

#01464

1" Thickness
3-1/2" Height
Includes Fasteners

#01465SS

As #01465 but,
Stainless Steel

ONE EAR WALL BRACKET



#16527

3/4" Thickness
Stainless Steel

"U" BRACKET



#16528

For 3/4" Thickness
Stainless Steel

PARTITION REPAIR

ALCOVE CLIP/CONNECTOR



#11538

For Laminate Partitions

PARTITION POST SHOE



#14150

Chrome Square Post Shoe
1-1/4"

#14151

Chrome Square Post Shoe
1-3/4"

SPLIT ROUNDED PILASTER SHOES

3" High Shoes For 1-1/4" Thick Pilaster

(Split Pilaster Shoes can be installed after pilaster is installed)



#15813 2"	#15308 8"
#15887 3"	#16272 9"
#15888 4"	#15310 10"
#15808 5"	#16366 11"
#15157 6"	#15807 12"
#15847 7"	#14390 20"

Other Sizes Available

ROUNDED PILASTER SHOES

3" High Shoes For 1-1/4" Thick Pilaster



#16373 2"	#16379 8"
#16374 3"	#16380 9"
#16375 4"	#16381 10"
#16376 5"	#16382 11"
#16377 6"	#16383 12"
#16378 7"	

Other Sizes Available

ROUNDED PILASTER SHOES

4" High Shoes For 1-1/4" Thick Pilaster



#14438 3"	#14440 7"
#14447 4"	#14441 8"
#14445 5"	

Other Sizes Available

PILASTER SHOES FOR SQUARE CORNERS



#16371P

For 3/4" Square Corners
10" Long, 3" Height

#12380

Stainless Steel
5" H x 22" W x 3/4" Thick

#16284

For 3/4" Square Corners
12" Long, 3" Height

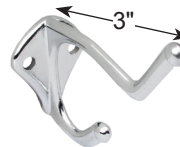
BUMPER HOOK



#01443

New Style - Chrome
3" Projection
7/8" Centers

COAT & HAT HOOK



#14039

Polished Chrome
3/4" Centers
Zamac Material

VANDAL RESISTANT CLOTHES HOOK



#16123

DOOR PULLS



#14044

Chrome
3-1/2" C x C

#14122

Chrome
4" C x C

DOOR PULL SET WITH SCREWS



#16187

3-1/2" C x C
Chrome Plated

BRONZE HOLE PLUG



#14676

1/2"

CHEMICALS

SILICONE LUBRICANT

FDA Approved



#60400101

1/4 oz.



#79029

5.3 oz.

Great for Valve Stems and Backflow Parts

HEAT PROOF GREASE



#60400506 (#79146)

1 oz.

A must for every tool box. Lubricates faucet & valve stems. Will not melt. For use with hot water & steam.

STAINLESS PLUMBERS PUTTY



#60500105 14 OZ.

#60500120 5 LB.

Non-hardening, non-crumbling, & bacteria proof.

Not For Use On Marble



EZ-REACH WD-40

#79843

14 oz. can

*Flexible Straw
Keeps its Shape!*

CHEWING GUM REMOVER - 12 OZ.

#79767

- Fast dry formula
- Quick freeze • Easy Removal



Quickly and easily removes chewing gum, candle wax, and other gummy substances. Fast freezing action simplifies clean-up. Use on carpets, wood, concrete, cement, terrazzo and marble floors, tile and resilient floors and more.

TELESCOPIC OILER



#79054 4 oz.

Telescopic tip for hard to reach areas. Great for motors & pumps.

SANITIZING ROOM FOGGER

Great for cold and flu season!



#60350001

3 oz.

#60350002

8 oz.

Sanitize an entire room in just minutes! Gets rid of disease-causing microbes almost instantly. Perfect for dorm rooms, hotels, nursing homes, offices, hospitals, classrooms, locker rooms and more.

NON-ACID DRAIN OPENER

You've Never Seen Anything Like This!

- EQUIPARTS drain cleaner clears drains in minutes!
- Will not damage sinks, tubs, brass, copper, steel, cast iron, plastic, or sewer cables!
- Totally destroys hair and grease!
- Does not produce offensive odors!



#60802200

Hot Water Activated
1lb. Container



#60802000

Cold Water Activated
12oz. Container

**TRY
THIS!**

WIPE OFF VANDALISM MARK REMOVER

#79643 16.5 oz



REMOVES MOST:

- Spray Paint
- Ball Point Inks
- Marker Inks
- Stencil Inks
- Mimeo Inks
- Printer's Ink
- Lipsticks
- Crayons
- Fingerprints
- Pencil Marks
- Scuff Marks
- Tape Residue
- Road Tar
- Vandal Marks
- Smudges

CEILING TILE PAINT 16 OZ.



#79260

New White

#79261

Old White

USES: Eliminates stains from water, smoke, or discoloring near air conditioning and heating vents.

MISCELLANEOUS



BLUE COTTON EQUI-RAGS

#36149

4 lb. Bag

*Super Absorbent!
A Must For Every Shop!*

BLUE MONSTER CITRUS SCRUBBING TOWELS

#37970 10" x 12"



Quickly removes grease, oils, inks, lubricants, caulk, pipe dope, cements, flux, tar and more from hands. No harsh solvents and chemicals. Requires no water. Leaves hands feeling clean and conditioned with no left-over residue. Dual textured. Pleasant citrus scent. Contains 75 wipes.

BLUE MONSTER DRY INDUSTRIAL TOWELS

#90092 220 count



- Great for cleaning up water, solvent and oil-based spills, as well as grease, oil, dirt, grime, & chemicals
- Ideal for parts, tools and surface leaning, and a range of hard surfaces
- 550% absorbent capacity
- Superior wet strength and versatility for light to heavy-duty wiping applications
- Latex-free and low-lint fabric is soft for delicate wiping applications
- Industries: Plumbing, Heating, Cooling, Oil, Gas, Industrial, Food Service, Janitorial/Sanitation, Automotive, Agriculture, Hospitality, Institutional, Medical and more

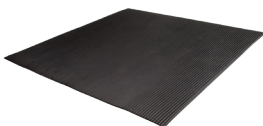
CAUTION TAPE



#79039M
3" x 1000'

#79039
3" x 300'

CORRUGATED RUBBER MAT



#SP12844
12" x 12" x 1/8"

PLUMBER'S MATE ABSORBENT UTILITY PADS

Saves you thousands!

#46920

Bag of six 24" x 24" pads



- Quickly absorbs liquids
- Easily holds 1 quart
- Protects cabinets and floors
- Great for use in tight spaces under leaking sinks, faucets, drains, water heaters, and toilets.
- Made in the USA

HYDRANT REPAIR KITS



#SP4403

Replacement for
Woodford # RK-65



#59653

Replacement for
Woodford # RK-70



#81826

Replacement for
Woodford # RK-71



#50910

Replacement for
Zurn Z-1300RK,
Z-1310RK Repair Kits



#57142

Replacement for
Zurn Z-1320RK,
Z-1321RK
Repair Kits



#57670

Replacement for
Zurn Z-1305RK,
Z-1315RK, Z-1325RK
(Use 2) Repair Kits



#54570

Replacement for
Zurn Z-1330RK,
Z-1333RK
Repair Kits

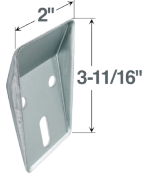
URINAL REPAIR

CHINA WALL HANGERS



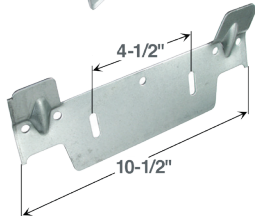
#52127

Lav/Urinal Hanger
2 required



#54195

Urinal Hanger
2 required



#SP2560

American Standard
Lavatory Hanger

KOHLER URINAL SPUDS



#08123

3/4" - With Flow Control



#08124

1-1/4" - With Flow Control

URINAL GASKET



#05815

Soft Sponge Rubber
Fits 2" Urinal Outlet
2-1/8" ID x 3-3/8" OD

URINAL REINFORCED WAX SEAL



#05479

Fits 2"

URINAL FLANGE REPAIR KIT

No Need to Remove the Old Flange!



#68166

With premium gasket
Includes screws & gasket



#65784

Includes screws & gasket

FERNCO WAX FREE URINAL SEAL



#82783

For 2"
Drain Pipe

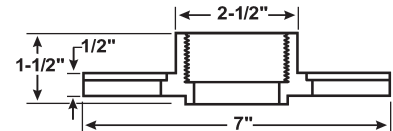
- Fast, easy installation that provides a long term solution. Even reusable on the same urinal during service calls.
- Strong, flexible adhesive creates a positive seal.
- Seals to the inside diameter of the drain pipe, forming a water tight, gas tight and odor tight seal.
- Made of flexible PVC and will move with the urinal.
- Will not absorb moisture, or break down over time and is impervious to mold and mildew.

CAST THREADED URINAL FLANGE WITH SLOTS



#57348

2" Threaded Brass
Flange Kit



- Accepts standard galvanized, cast iron, or plastic 2" threaded pipe.
- Made of cast brass.
- Kit contains: 1 brass urinal flange, 1 flexible gasket, 2 closet bolts, 2 nuts and 2 washers.

URINAL STRAINERS



#82732

Retrofit Beehive

For American Standard
Washbrook Urinal



#85042

Retrofit Beehive

For American Standard
Allbrook Urinal



#85233

Retrofit Beehive

For All Designs of Kohler
Wall Hung Urinals



#50938

For Kohler Urinal
With Prongs
Also fits Zurn

URINAL & CLOSET

ANTI-SPLASH URINAL SCREENS

- Patented Sealed Bristles Technology™ to eliminate urine splashback
- Biodegradable and 100% recyclable
- Perfect for monthly hygiene services
- Ideal for waterfree urinals
- Effective Anti-Microbial
- Flexible design conforms to all urinals
- CA VOC compliant

Heavy Duty - 2 Per Pack

Emits a fresh, clean scent that lasts for 60 days.
Designed for heavy traffic public restrooms



#79957
Apple



#79958
Fresh



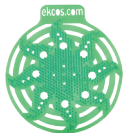
#79959
Melon



#79960
Lavender

Power Screen - 2 Per Pack

Emits a fresh, clean scent that lasts for 30 days.



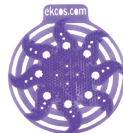
#79961
Apple



#79962
Fresh



#79963
Melon



#79964
Lavender

TOILET WEDGE

Great for stabilizing rocking toilets!



#59065E

- Made from flexible white rubber
- Corrosion resistant
- Interlocking for stability and stacking
- Dozens of uses on the job site

SPANNER CLOSET FLANGE



#05499

"BIG FOOT IV" WALL HUNG TOILET STABILIZER SEAL GASKET



#81700

Soft Wall Gasket
Self Shimming
18" x 19" x 1/4" - White

Fits Most 3 and 4 Bolt Patterns!

SUPPLY LINES

FLEXIBLE S.S. PLUMBING CONNECTORS



Faucet Connections

3/8" Fem. Comp x
1/2" Fem IPS Straight Thread

#40800236 12"

#40800237 16"

Toilet Connections

3/8" Fem. Comp x
7/8" Fem. Ballcock Thread

#40800257 6"

#40800380 9"

#40800381 12"

#40800247 16"



CARTRIDGE FILTER KIT FOR WATERFREE URINALS **#05317**



HEAVY DUTY CARTRIDGE REMOVING TOOL **#56706**



PBGONE URIC ACID ERADICATOR



#60800016
32 oz. bottle

URINAL SCALE REMOVER



#60800115CS
(12 QTS per Case)
Sold by the case

OUT OF ORDER BONNET

#69763



- Quick and sanitary method to designate out of service urinals, toilets, sinks, drinking fountains, kitchen equipment, etc.
- Inexpensive and disposable, the Out of Service Bonnet improves restroom hygiene.
- Fits a variety of sizes and shapes of fixtures.
- More attractive and effective than makeshift signs.

CLOSET REPAIR

WALL MOUNT CLOSET GASKET



#08113

Zurn - Self-sticking
5-5/16" OD x 3-7/16" ID
3/4" Thick



WAX-FREE TOILET SEAL



#80290 Fits 4"

#80289 Fits 3"

- No more guessing if there is a positive seal with the bottom of the toilet.
- A strong, flexible adhesive creates a strong seal to the bottom of the toilet.
- Seals on raised floors, wood, tile, linoleum and carpet.
- No need for flange risers or stacked wax rings.

BRASS CLOSET BOLTS



#05372 1/4" x 2-1/4" (Pair)

#05373 1/4" x 3-1/2" (Pair)

#05374 5/16" x 2-1/4" (Pair)

#53016 5/16" x 3-1/2" (Pair)

SNAP-IT BRASS CLOSET BOLTS



Specially designed solid brass closet bolt. 1/4" and 5/16" diameters with easy break off indent and no spin tab which sets bolt firmly in place when assembling closet bowl to flange.

#05358 1/4" x 2-1/4" (Pair)

#05359 5/16" x 2-1/4" (Pair)
with fixed washer

EQUIPARTS EASY SNAP-ON CLOSET BOLT CAPS



#05364 (1 Pair)

White plastic closet caps fit all closet bowls. Simple two piece snaps together.

ELONGATED OPEN FRONT TOILET SEAT LESS COVER



#05480 (500STSCSS-001)

Heavy Duty White

- Self-sustaining stainless steel check hinge
- Extended back with concealed hinge
- Integrally-molded, permanent & sanitary color-keyed bumpers
- Corrosion-free hardware
- Withstands cleansers, strong chemicals



#05490 (295SSCT)

Heavy Duty White

- **STA-TITE**
Commercial Fastening System™ Eliminates callbacks for loosened seats
- Ring Bumpers™ (4)
- Self-sustaining check hinges with non-corroding stainless steel posts and pintels



INFANT SEAT ROUND OPEN FRONT



#53297 (1580CT)

Heavy Duty White

- **STA-TITE**
Commercial Fastening System™ Eliminates callbacks for loosened seats
- DuraGuard® Antimicrobial Built-In Seat Protection
- Ring Bumpers™ (2)
- Plastic hinges with non-corroding stainless steel posts and pintels



REINFORCED WAX SEALS WITH FLANGE

#05478

Fits All Wall Closet
Bowls and Carriers



#05371

Extra Thick,
Fits 3" & 4" Lines
For Floor Bowls



CLOSET REPAIR

TIGHT SEAL GASKETS

A Revolutionary Change in Toilet Sealing!



- Springs back to shape when squeezed
- Won't melt or become hard
- Reusable
- Allows repositioning of fixture
- Sticky Elastomer ensures a tight seal



#67931

For Closet
3/4" Thick



#67933

For Closet
1-1/8" Thick



#67932

For Closet
3/4" Thick with Flange



#67934

For Closet
1-1/8" Thick with Flange



#67935

1/2" Tank To Bowl Gasket
Works on 2" and 3"



#67938

1/2"
For Urinal

HEAVY DUTY EXTENDED CLOSET NUTS WITH WASHERS

Helps Reduce Breakage!

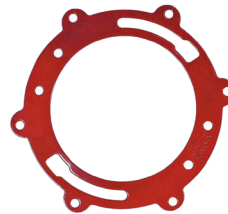
#58399



- Four pack
- Used with Toto & others
- Reinforces wall mount closets
- Can also be used if existing bolts are not long enough.

CLOSET QUICK RING

#55195



- Unique screw hole tabs allow the quick ring to be securely attached to wood or concrete sub-floors.
- Plastisol coated for corrosion protection.
- Slotted for 1/4" or 5/16" closet bolts.

Note: When Setting Toilet, Use a Wax Ring with Plastic Flange

FLUIDMASTER (PRO 45)

#05467



- Fits most any toilet tanks
- Adjustable from 9-1/4" to 14" height
- ANTI-SIPHON - Code approved
- Non-corrosive stainless steel components
- Less shut-off noise, shorter fill up time, positive shut-off
- Saves water

Leak Sentry Available Upon Request

PRESSURE ASSIST REPLACEMENT CARTRIDGE

#08287

For Flushmate



AERATORS

FLOW TYPES

* Aerated Stream



This type of aerator introduces air into the water stream to produce a larger and whiter stream that is soft to the touch, and non-splashing.

For aerators with
1.0 GPM to 2.2 GPM

* Spray Stream



When the flow rate is too low to produce an aerated or laminar stream, a spray stream aerator is used to produce a miniature shower pattern to provide full coverage of the hands during washing.

For aerators with
0.35 GPM and .50 GPM

15/16" CHROME PLATED AERATORS * CA Compliant	15/16 MALE	15/16 MALE VP	15/16 FEMALE	15/16 FEMALE VP	15/16 DUAL THREAD
0.35 GPM **	#85645	#85648	#85646	#85649	#85650
0.5 GPM **	#05004	#05006	#80423	#80603	#50016
1.0 GPM *	#54434	#57617	#81400	#57618	#57672
1.2 GPM *	#66616	#66617	#66618	#66619	#66620
1.5 GPM *	#56328	#59691	#81633	#05009	#50070
1.8 GPM *	#85635	#85637	#85636	#85638	#85639
2.2 GPM *	#05002	#05001	#05005	#50013	#05404

13/16" CHROME PLATED AERATORS * CA Compliant	13/16 MALE	13/16 MALE VP	13/16 FEMALE	13/16 FEMALE VP	13/16 MALE WITH TIGHTENING GROOVE
0.35 GPM **	#85651	#85653	#85652	#85654	#85655
0.5 GPM **	#54006	#56690	#05010	#05011	#80601
1.0 GPM *	#59517	#80535	#80525	#80425	#80602
1.2 GPM *	#66621	#66622	#66623	#66624	#66625
1.5 GPM *	#52497	#52052	#05012	#05015	#45335
1.8 GPM *	#85640	#85642	#85641	#85643	#85644
2.2 GPM *	#05013	#05014	#05018	#05016	#80604

CACHE AERATORS & KITS

FLOW TYPES

* Aerated Stream



This type of aerator introduces air into the water stream to produce a larger and whiter stream that is soft to the touch, and non-splashing.

For aerators with
1.0 GPM to 2.2 GPM

* Spray Stream



When the flow rate is low, a spray stream aerator is used to produce a miniature shower pattern to provide full coverage of the hands during washing.

For aerators with
0.35 GPM and .50 GPM

Gallons Per Minute	Standard	Junior	Tiny Junior	Tom Thumb
0.35 GPM *	#66700	#66701	#66702	Not Available
0.5 GPM *	#66703	#66704	#66705	#66706
1.0 GPM *	#66707	#66708	#66709	#66710
1.2 GPM *	#66711	#66712	#66713	#66714
1.5 GPM *	#66715	#65408	#66716	#66717
1.8 GPM *	#66718	#66719	#66720	#66721
2.2 GPM *	#66722	#65717	#66723	#66724
KEYS	Gray  #66731	Red  #88293	Green  #66732	Yellow  #66733

Delta Cache Kit #66725



- 1.2 GPM Aerator
- Key

Moen Cache Kit #66727



- 1.2 GPM Aerator
- Key

Delta Cache Kit #66726



- 1.5 GPM Aerator
- Key

Moen Cache Kit #66728



- 1.5 GPM Aerator
- Key

Cache Key Kit #66734



Includes keys for Standard, Junior, Tiny Junior, and Tom Thumb Cache Aerators

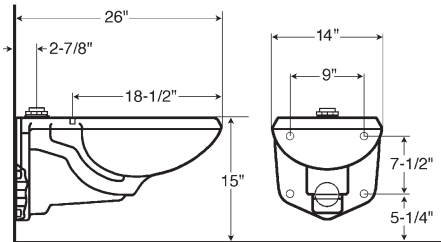
CLOSETS

American Standard

AFWALL

#55030

- Wall mounted elongated bowl
- Low consumption 1.0 - 1.6 GPF
- Direct-fed siphon jet action
- 14-1/8" height
- 1-1/2" inlet spud
- Toilet Seat not included



#55030-CA

- Same as above, but 1.28 GPF

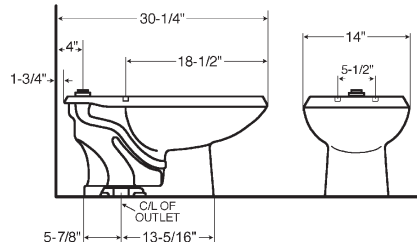
American Standard

MADERA

#55905

#55087 - ADA Height

- Floor mounted elongated bowl
- Low consumption - 1.6 GPF
- 10" rough in
- 1-1/2" inlet spud
- Toilet Seat not included



#55905-CA

- Same as #55905 above, but 1.28 GPF

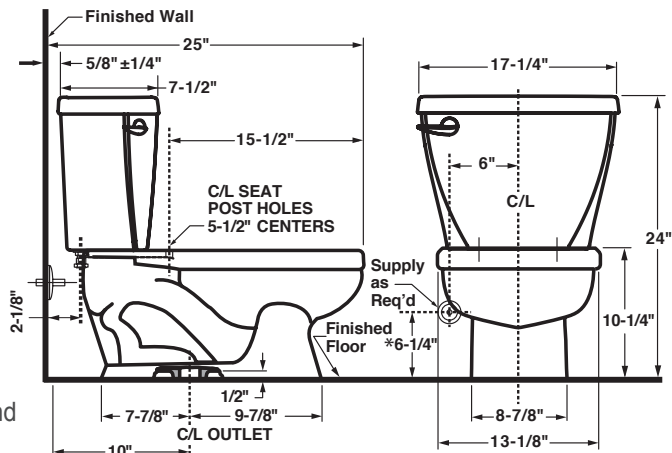
American Standard

#53804

- 1.28 GPF
- High Efficiency, Low Consumption
- Meets definition of HET (High Efficiency Toilet)
- 10-1/4" rim height
- 10" roughing-in
- Round front siphon action bowl
- Speed Connect® tank / bowl coupling system
- Chrome trip lever
- Sanitary dam on bowl
- Fully glazed 2" trapway
- Used with toilet seat #53297, round open front less lid.



BABY DEVORO™ FLOWWISE® 10" HIGH ROUND FRONT TOILET



American Standard

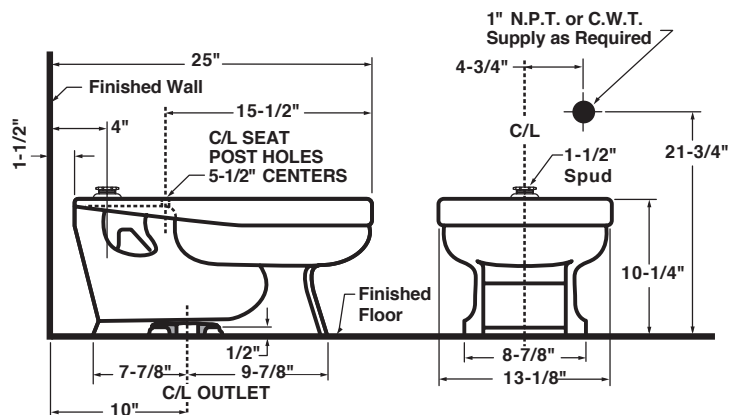
#52199

- High Efficiency, Low Consumption. Operates in the range of 1.28 gpf to 1.6 gpf
- Meets definition of HET (High Efficiency Toilet) when used with a 1.28 gpf high efficiency flush valve
- 10-1/4" rim height
- 10" roughing-in



- Round front bowl
- Siphon jet action
- Fully glazed trapway
- 1-1/2" inlet spud
- Used with toilet seat #53297, round open front less lid.

BABY DEVORO™ FLOWWISE® ROUND FRONT FLUSHOMETER TOILET



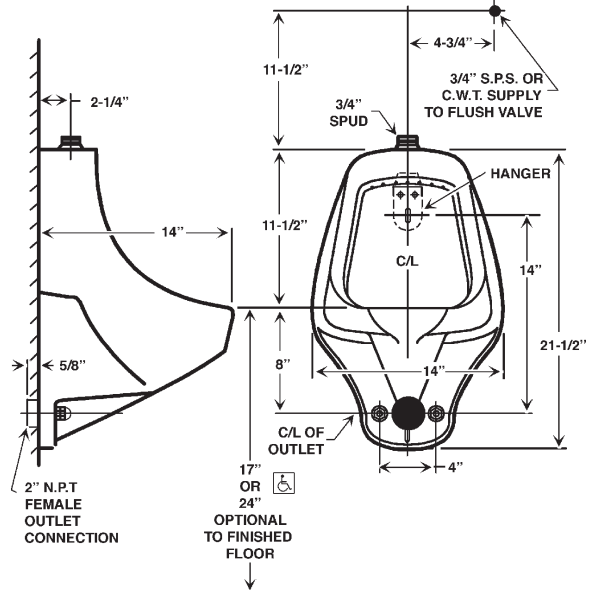
URINALS

American Standard



#50826 (ALLBROOK)

- Low-consumption 1.0 GPF
- Flushing rim
- Siphon jet flush action
- 3/4" inlet spud
- Wall hanger

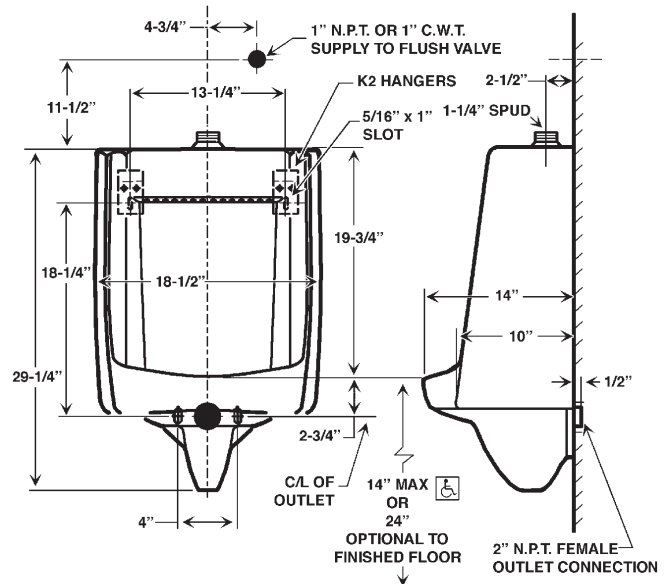


American Standard



#55569 (LYNBROOK)

- Low consumption 1.0 GPF
- Flushing rim
- Blowout flush action
- 1-1/4" inlet spud
- 2 wall hangers



ZURN



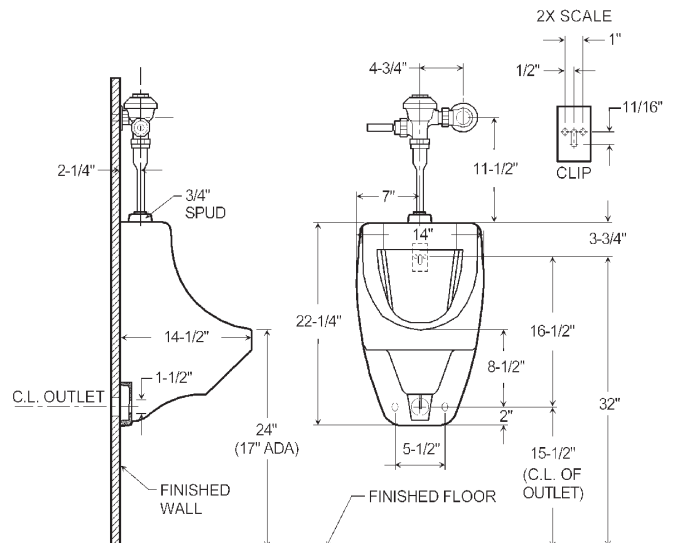
#88376 (Z5730)

1.0 GPF

#88376-CA

0.125 - 0.5 GPF

- Siphon jet action
- 4-1/8" back outlet
- 3/4" top spud
- 2" IPS outlet flange and rubber gasket with integral trap



SLOAN CHINA

VITREOUS CHINA WATER CLOSET

#83338 (ST-2459)

Flush Cycle

1.1 to 1.6 gpf
4.2 to 6.0 LPF

SLOAN



*Directly Replaces American
Standard AFWall*

Fixture

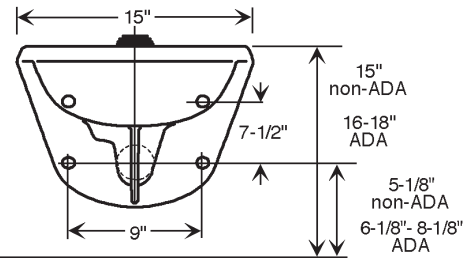
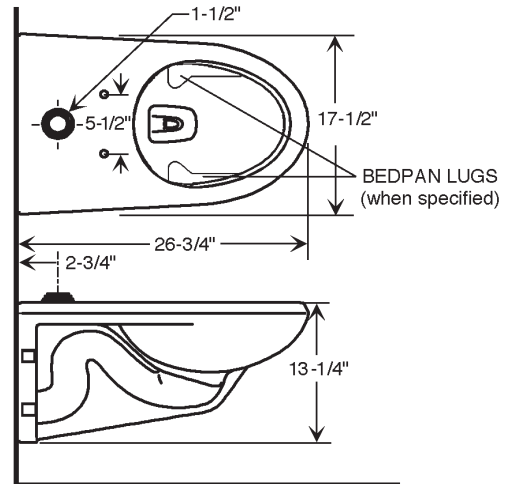
- Wall hung vitreous china elongated bowl
- Siphon jet flushing action
- Elongated bowl
- 1-1/2" I.P.S. top spud inlet
- 2-1/8" fully glazed trapway diameter
- Bedpan lugs (with specified model)
- Mounting hardware, carrier and toilet seat not included
- Integral flushing rim
- Water spot area 10-3/8" x 9-3/8"
- ASME A112.19.2/CSA B45.1

Colors/Finishes

- White

Recommended accessories

- Toilet seat
- Compatible with Toilet Seat models #05480 and #05490



Designed to meet ADA standards
when bowl is 17" - 19" high including seat

SLOAN VITREOUS CHINA HIGH EFFICIENCY WATER CLOSETS

#83333 (ST-2009-A)

Flush Cycle

1.1 to 1.6 gpf
4.2 to 6.0 LPF

SLOAN



Fixture

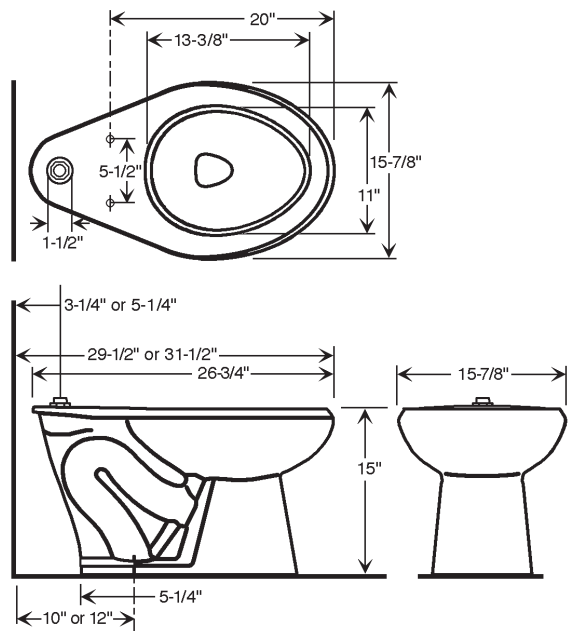
- Elongated bowl
- Vitreous china
- Floor mounted
- Siphon jet flushing action
- 1-1/2" I.P.S. top spud inlet
- 2-1/8" trapway diameter
- Fully glazed trapway
- Toilet seat not included
- Water spot area 10" x 7-1/2"
- Closet bolts and caps included

Colors/Finishes

- White

Recommended accessories

- Toilet seat
- Compatible with Toilet Seat models #05480 and #05490



*Directly Replaces
American Standard
Madera Series*

HET
HIGH-EFFICIENCY TOILET

SLOAN CHINA

COMPLETE VITREOUS CHINA LAVATORY WITH BACKSPLASH

#83578 (SS-3803)

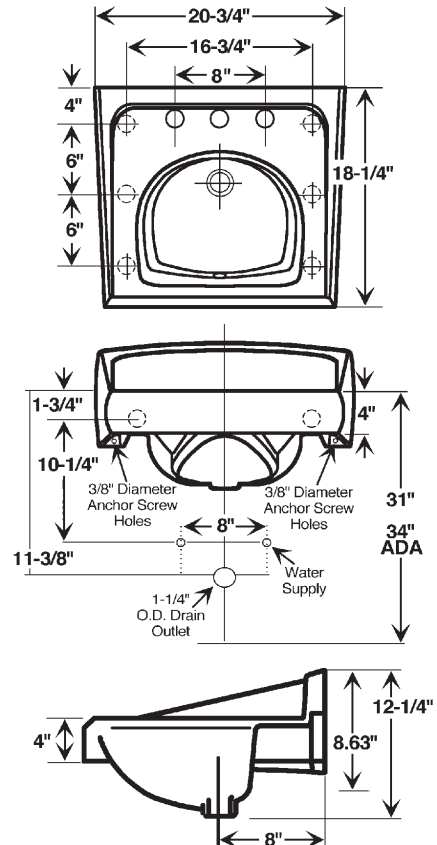
SLOAN®



Will Replace American Standard Lucerne



- White vitreous china
- Wall mount
- Hanging hardware
- Backsplash
- 8" (102 mm) centers
- Overflow
- ADA compliant when mounted with deck at 34" from finished floor. See illustration for recommended ADA installation
- 20.75" x 18.25"
- Carrier not included
- Compatible with: Jay R. Smith- 0700 series lavatory carrier or equal. Josam- 17100-202 series lavatory carrier or equal. Watts TCA-411 concealed arm "track" carrier or equal. Watts-WCA-411 carrier with concealed arms or equal



COMPLETE VITREOUS CHINA LAVATORY WITH BACKSPLASH

#82915 (SS-3003)

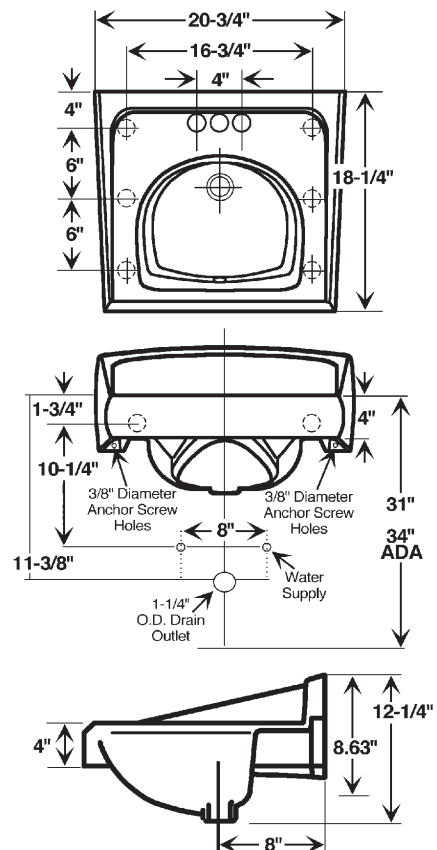
SLOAN®



Will Replace American Standard Lucerne



- White vitreous china
- Wall mount
- Hanging hardware
- Backsplash
- 4" (102 mm) centers
- Overflow
- ADA compliant when mounted with deck at 34" from finished floor. See illustration for recommended ADA installation
- 20.75" x 18.25"
- Carrier not included
- Compatible with: Jay R. Smith- 0700 series lavatory carrier or equal. Josam- 17100-202 series lavatory carrier or equal. Watts TCA-411 concealed arm "track" carrier or equal. Watts-WCA-411 carrier with concealed arms or equal



SLOAN URINALS

RETROFIT VITREOUS CHINA TOP SPUD URINAL

SLOAN®

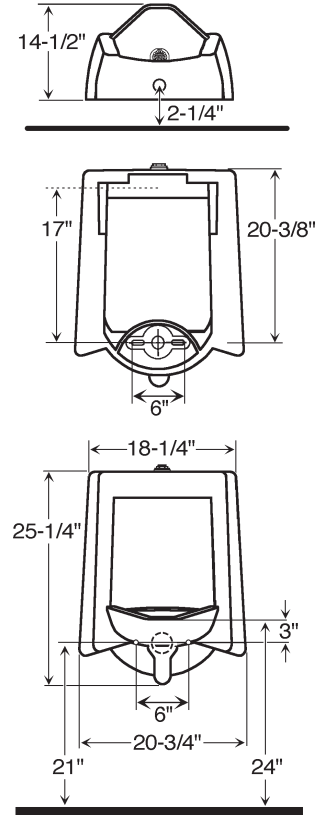


*Replaces Most Urinals,
and Covers Old Footprints*

#83325

0.13 - 0.50 GPF (SU-1209-A)

- Vitreous china retrofit top spud urinal
- Large footprint to cover old caulk lines
- Washdown flushing action
- 3/4" I.P.S. Top spud
- 2" NPT outlet flange
- All mounting hardware included
- Carrier not included



COMPLETE VITREOUS CHINA TOP SPUD URINAL

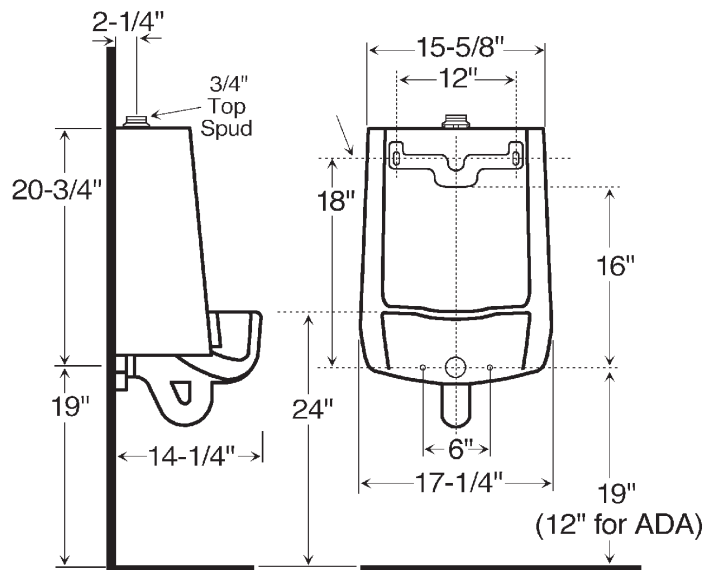
SLOAN®



#83329

0.125 - 1.0 GPF (SU-1006-A)

- Wall hung top spud vitreous china
- Washdown flushing action
- 3/4" I.P.S. Top spud
- 2" NPT outlet flange



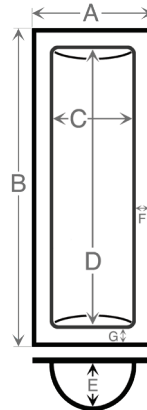
- All mounting hardware included
- Carrier not included
- Compatible With: Jay R. Smith Carrier 0636 or 0637

Did You Know?



EQUIPARTS SUPPLIES FIRE EXTINGUISHER COVERS!

Need a fire extinguisher cover? Now you can finally scratch that item off your to-do list! TMS-Equiparts can provide you with a **custom sized** cover, built to your specific dimensions! Just send us all of the measurements below, and your custom sized fire extinguisher cover will be on its way!



**Must Specify
Standard or Unbreakable**

How to Measure:

A: Width Of The Outside Flange _____

B: Length Of Outside Flange _____

C: Width Of Bubble _____

D: Length Of Bubble _____

E: Depth Of Bubble _____

F: Flange Lip Horizontal _____

G: Flange Lip Vertical _____

FIRE EXTINGUISHER BUBBLE



#SP2410

- 6-3/4" x 21-1/2"
- Clear

FIRE EXTINGUISHER CABINETS



WHITE FIRE SPRINKLER COVERS

- Designed to conceal the working parts of the sprinkler
- When exposed to heat, the cover plate falls away



#11942

2-3/4" DIA
165° Temp Rating



#12069

3-1/4" DIA
135° Temp Rating



#SP13509

3-1/4" DIA
139° Temp Rating



#12162

3-5/16" DIA
135° Temp Rating



#11919

3-5/16" DIA
139° Temp Rating



#11928

3-5/16" DIA
135° Temp Rating

Other styles, sizes, and fire related items available.

#SP13215

- 24" x 9-1/2" x 3-1/2"
- Recessed
- Stainless Steel Door Frame
- ADA Compliant

#SP16965

- 24" x 9-1/2" x 6"
- Semi-Recessed
- Aluminum Door Frame
- Duo Door
- Recessed Handle
- Black Lettering
- ADA Compliant

#SP17134

- 24-1/2" x 9-1/2" x 6"
- Recessed
- White Door Frame
- VD Door
- Red Lettering
- ADA Compliant

#SP14904

- 27-1/2" x 13" x 3-1/2"
- Surface Mount
- Steel Door Frame
- Plastic Bubble
- Red Decal
- ADA Compliant

#SP13675

- 32" x 16" x 3-1/2"
- Recessed
- Aluminum Door Frame
- ADA Compliant

*Other fire extinguisher cabinets available.
Call for assistance.*

HARDWARE & SAFETY

GO-SPECS FOAM LINED HYBRID SAFETY GLASSES

#37788



A specialty glass/goggle that provides unparalleled protection from wind-blown dust/dirt and particulates. Features adjustable temples, EVA foam liner, clear lenses, and anti-fog coating.

GO-SPECS FOAM LINED HYBRID SAFETY GLASSES WITH STRAP

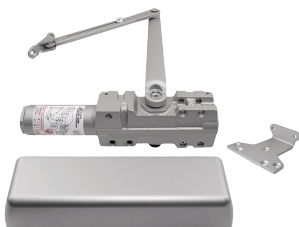
#37789



As above, with strap. A modified version of our original Go-Spec with interchangeable temples/FR straps, a ballistic rating, EVA closed cell FR foam liner and anti-fog coating. Provides an extra measure of protection in dusty and dirty environments.

ALUMINUM DOOR CLOSER WITH PARALLEL ARM

#11863



- Length of Closer: 12-1/4"
- Vertical Mounting Holes: 2-1/4"
- Overall Height: 4-7/8"
- Top of Door to Bottom of Closer: 3-11/16"
- Delayed 5lb. Opening, Force to Size 5

DOOR CLOSERS - PARALLEL ARM



#01480
Satin Aluminum

#14085
Dark Bronze

"POWERGRAB" GLOVES

Ideal for Winter Work!



Yellow

#37833S SM
#37833M MED
#37833L LG
#37833XL XL
#37833XXL XXL

Black

#37834S SM
#37834M MED
#37834L LG
#37834XL XL
#37834XXL XXL

G-TEK GLOVES

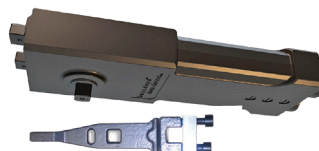
Seamless Knit Poly-Kor Blended Glove



#37894L Large

#37894XL X-Large

OVERHEAD CONCEALED DOOR CLOSER



#11934
Bronze

- Door size: 31" to 41"
- Medium Duty
- 105° back stop, non-hold open
- Non-handed
- Concealed top jamb mounting

SLEEVE BOLTS

For Door Closers and Hardware

Flat



#12081
1/4-20 x 1-3/8
Aluminum

Rounded



#11066
1/4-20 x 1-5/8
Aluminum

#11066S
1/4-20 x 1-5/8
Steel

#11066B
1/4-20 x 1-5/8
Bronze

HARDWARE

LOW PROFILE FLOOR STOP



#01151

Aluminum Finish

#10320

Polished Brass Finish

Other Finishes Available On Request

5" SOLID BRASS DOOR STOP



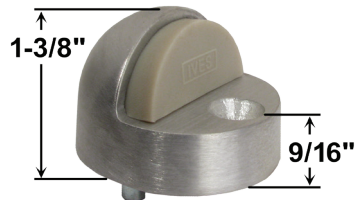
#01170

Dull Chrome Finish

#01171

Polished Brass Finish

HIGH PROFILE FLOOR STOP



#01153

Satin Chrome Plated

#10321

Polished Brass Finish

Other Finishes Available On Request

PLUNGER DOOR STOP (BUDGET)

Step-on type



#01499

Aluminum Finish

#15787

Sprayed Brass Finish

#15788

Dark Bronze Finish



#01499NST

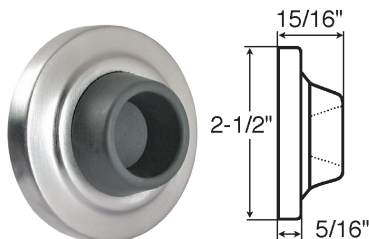
New Style Replacement Tip



#01499TIP

Old Style Replacement Tip

CONCAVE WALL STOP



#01156

Satin Chrome Plated

#10323

Polished Brass Finish

Other Finishes Available On Request

4" x 16" WITH SQUARE CORNERS



#10187

Aluminum (Economy)

#10188

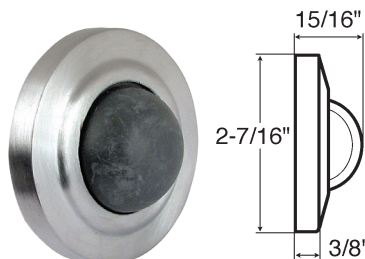
Stainless Steel (Heavy Duty)

#10189

Polished Brass

Other Finishes and Sizes Available

CONVEX WALL STOP



#01159

Satin Chrome Plated

#10324

Polished Brass Finish

Other Finishes Available On Request

BUMPER PLATE



3/16" Thick

#10325

3" Protector Bumper Plate

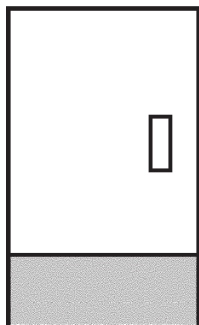
#10326

5" Protector Bumper Plate

- Prevents damage from door knobs or level handle locks.
- Can be painted to match surface.
- Self adhesive.
- White plastic can cover holes in wall.

HARDWARE

KICK PLATE



Protects the bottom of the push side of doors subject to scuffing from foot traffic. Recommended for all doors subject to normal use (Especially doors using a closer). Standard heights are 6", 8", or 10" by door width, with allowance for stop bead.

#16127

6" x 34"

Stainless Steel

#15269

8" x 34"

Stainless Steel

#15912

10" x 34"

Stainless Steel

ORDERING INFO

Equiparts supplies a variety of quality plates to protect your doors from damage and wear. When calling to order, please have the following information available, so that we can provide you with what you need as quickly as possible.

• SPECIFY LENGTH!

• SPECIFY HEIGHT!

• SPECIFY MATERIAL!

- ☐ Stainless Steel
- ☐ Aluminum (Economy)
- ☐ Brass

- ☐ Bronze
- ☐ Plastic

• SPECIFY FINISH!

- ☐ Dull Chrome
- ☐ Polished Chrome
- ☐ Satin Brass
- ☐ Polished Brass
- ☐ Bronze

Color (if plastic) customized to your specifications !!



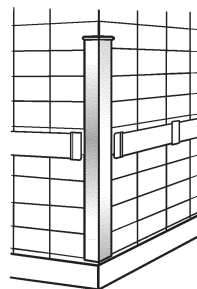
ALUMINUM 90° OFFSET DOOR PULL



#12401

18" C x C

STAINLESS STEEL CORNER GUARDS



#10427

1-1/2" x 1-1/2" x 48"

#10427SA

1-1/2" x 1-1/2" x 48"

#10428

3-1/2" x 3-1/2" x 48"

#10428SA

3-1/2" x 3-1/2" x 48"

- Use in hospitals, nursing homes, commercial kitchens, or any place where corners are subject to abuse.
- Can be manufactured in special sizes other than the standard.
- Custom angles are available.
- Although double backed foam tape or screws may be specified, EQUIPARTS recommends an adhesive installation. When properly applied it can be completed quickly, giving a long-lasting, neatly finished job.
- Designed for indoor use. Outdoor materials also available.

PLASTIC CORNER GUARDS INDESTRUCTIBLE



- Made of polycarbonate plastic
- Highest impact strength
- Non-yellowing
- Available in many colors. Call for assistance

#10417

Clear
Pre-Drilled
3/4" x 3/4" x 4'

#10418

Clear
Pre-Drilled
3/4" x 3/4" x 8'

#10421

Clear
Pre-Drilled
1-1/8" x 1-1/8" x 4'

#10421BL

Black
Pre-Drilled
1-1/8" x 1-1/8" x 4'

#10422

Clear
Pre-Drilled
1-1/8" x 1-1/8" x 8'

#10425

Clear
Pre-Drilled
2-1/2" x 2-1/2" x 4'

#10425BR

Brown
Pre-Drilled
2-1/2" x 2-1/2" x 4'

#10425GY

Gray
Pre-Drilled
2-1/2" x 2-1/2" x 4'

#10425IV

Ivory
Pre-Drilled
2-1/2" x 2-1/2" x 4'

#10426

Clear
Pre-Drilled
2-1/2" x 2-1/2" x 8'

#10425SA

Clear
Self Adhesive
2-1/2" x 2-1/2" x 4'

#10425BKSA

Black
Self Adhesive
2-1/2" x 2-1/2" x 4'

#10425WH

White
Pre-Drilled
2-1/2" x 2-1/2" x 4'



American Standard



ARMSTRONG

"Apollo"



AMERICAN SPECIALTIES, INC.



Global Partitions



BEMIS

BOBRICK

Bradley

BRIGGS



Central Brass

CHANNEL LOCK



CHICAGO FAUCETS
Geberit Group

Church.
The Best Seat in the House®

dahl
brothers canada limited
Est. 1952

DELTA

DELTA
Architectural Hardware

Dormont

DURHAM
MANUFACTURING

ELKAY



Fluidmaster

FLUSHMATE®
A Division of Sloan Valve Company

General
PIPE CLEANERS

GERBER

GENERAL
PARTITIONS
Mfg. Corp.



Halsey Taylor

Haws



John Guest

JSC
Jones Stephens Corp.

KOHLER

LEGEND
VALVE

LEONARD
WATER TEMPERATURE CONTROLS



Metcraft
INDUSTRIES INCORPORATED

MIFAB

MOEN



NGP
National Guard Products, Inc.

NEOPERL
flow, stop and go®

OASIS



POWERS™
A WATTS Brand

RIDGID

SCRANTON
PRODUCTS
DESIGNED TO BE WORRY-FREE



SPEAKMAN

SLOAN

SYMMONS



TOTO



Always A Step Ahead

WILKINS

WATTS



ZURN

For over 50 years, Equiparts has been supplying a complete line of plumbing and maintenance specialties to commercial and institutional customers. Our specialty is hard to find parts. In addition, we are committed to delivering the highest level of professional service. The Equiparts team is comprised of educated product specialists with unparalleled knowledge and technical expertise.



Pittsburgh: 412-781-9100
Toll Free: 800-442-6622
Fax: 412-781-3085

www.equiparts.net

*We have warehouses in Pittsburgh, PA,
Manassas, VA, and Redwood City, CA*