



EQUIPARTS
Repair Parts Specialists

Water Coolers & Outdoor Drinking Fountains

Call For Pricing!



**INTERACTIVE
PDF**



INSIDE:

- *Outdoor Drinking Fountains*
- *Water Coolers*
- *Bottle Fillers*
- *Bi- Level Units*
- *Combination Units*
- *Bubblers*

Toll Free: 800-442-6622 • Pittsburgh: 412-781-9100 • Email: info@equiparts.net

www.equiparts.net • www.equipartsdrinkingfountains.com

Outdoor EZH2O® Bottle Filling Station



#89841 (LK4420BF1U)

ELKAY



- Non-filtered, non-refrigerated
- Manually operated bottle filler
- Fill rate: 1.1 GPM (bottle filler)
0.5 GPM (drinking fountain)
- Front push button
Drinking fountain activation
- Vandal resistant bubbler
- Marine-grade 316 stainless steel construction
- Floor mounted
- ADA compliant
- Heavy duty vandal resistant
- Powder coated finish (12 color options)

Outdoor EZH2O® Bottle Filling Station Wall Mount, Bi-Level

#67912 (LK4409BF)

- Non-filtered, non-refrigerated
- Manually operated bottle filler
- 1 GPM quick fill rate
- Front push button drinking fountain activation
- Vandal resistant bubblers
- Marine-grade 316 stainless steel construction
- ADA compliant
- Heavy duty vandal resistant
- Wall mounted
- Powder coated finish (12 color options)
- Single line installation
(1 Water line, 1 waste line)
- Bi-level drinking fountains



ELKAY



All Fountains on this Spread are Available in Each



Evergreen



Blue



Purple



Red



Terracotta



Orange

Outdoor EZH2O® Bottle Filling Station Wall Mount

ELKAY



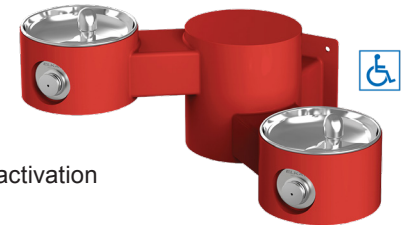
#67913 (LK4408BF)

- Non-filtered, non-refrigerated
- Manually operated bottle filler
- 1 GPM quick fill rate
- Front push button drinking fountain activation
- Vandal resistant bubblers
- Marine-grade 316 stainless steel construction
- ADA compliant
- Heavy duty vandal resistant
- Wall mounted
- Powder coated finish (12 color options)
- Single line installation
(1 Water line, 1 waste line)
- Single drinking fountain

Outdoor EZH2O® Drinking Fountain Wall Mount, Bi-Level

#67914 (LK4406)

- Non-filtered, non-refrigerated
- 1 GPM quick fill rate
- Front push button drinking fountain activation
- Vandal resistant bubblers
- Marine-grade 316 stainless steel construction
- ADA compliant
- Heavy duty vandal resistant
- Wall mounted
- Powder coated finish (12 color options)
- Single line installation (1 water line, 1 waste line)
- Bi-level drinking fountains



ELKAY

of These Colors. Please Specify When Ordering.



Yellow



Black



Brown



Grey



Beige



White

Outdoor Push Button & Sensor Operated Bottle Filler

Great for Parks!



#66507 (M-OBF4)

- Includes lead and cyst filter
- Non-refrigerated
- Sensor and manual bottle filler activation
- Fill rate: 1.0 GPM
- Heavy gauge steel construction
- ADA compliant
- Vandal resistant
- Stainless steel finish
- Height: 4' 3"

#66506 (M-OBF-M4)

- As above, but with manual push-button only operation

Outdoor Concrete Wall Mount Push Button Drinking Fountain



#66785 (GVC59)

- Non-filtered, non-refrigerated
- Fill rate: 0.3 GPM
- Front push button drinking fountain activation
- Polished stainless steel bubbler
- ADA compliant
- Vandal resistant
- 18 Gauge, 304 stainless steel bowl
- Brown reinforced concrete aggregate finish

ELKAY



Filtered Water Cooler and EZH2O® Bottle Filling Station

#03586 (LZS8WSVRSK)

- Includes filter
- Sensor activated bottle filler
- Integrated bottle counter and filter monitor
- Cooling capacity: 8 GPH
- Fill rate: 1.1 GPM (bottle filler) 0.5 GPM (water cooler)
- Front and side push bar water cooler activation
- Vandal resistant bubbler
- ADA compliant
- Stainless steel finish

ELKAY



Filtered Water Cooler and EZH2O® Bottle Filling Station

#88095 (LZS8WSSK)

- Includes filter
- Sensor activated bottle filler
- Integrated bottle counter & filter monitor
- Cooling capacity: 8 GPH
- Fill rate: 1.1 GPM (bottle filler) 0.5 GPM (water cooler)
- Front and side push bar water cooler activation
- Flexi-guard bubbler
- ADA compliant
- Stainless steel finish

Filtered Water Cooler with Bottle Filling Station



#03585 (LZS8WSLK)

- Includes filter
- Sensor activated bottle filler
- Integrated bottle counter and filter monitor
- Cooling capacity: 8 GPH
- Fill rate: 1.1 GPM (bottle filler)
0.5 GPM (water cooler)
- Front and side push bar water cooler activation
- Flexi-guard bubbler
- ADA compliant
- Light gray granite finish

Vandal Resistant Water Cooler and EZH2O® Bottle Filling Station



#88096 (VRC8WSK)

- Non-filtered
- Manually operated bottle filler
- Integrated bottle counter
- Cooling capacity: 8 GPH
- Fill rate: 1.1 GPM (bottle filler)
0.5 GPM (water cooler)
- Front push button water cooler activation
- Vandal resistant bubbler
- ADA compliant
- Vandal resistant design
- Stainless steel finish

#88097 (VRCTL8WSK)

- As above, but Bi-Level

Versacooler with Versafilter & Hands Free Versafiller



#88839 (PGF8EBF)

- Includes filter
- Sensor activated bottle filler
- Integrated bottle counter and filter monitor
- Cooling capacity: 8 GPH
- Fill rate: 0.5 GPM (bottle filler)
0.35 GPM (water cooler)
- Front and side antimicrobial push pads
- Flexible guard bubbler
- ADA compliant
- Powder coated sandstone finish

Hands Free Versafiller Combination Versacooler II



#03542 (PG8EBF)

- Non-filtered
- Sensor activated bottle filler
- Integrated bottle counter and filter monitor
- Cooling capacity: 8 GPH
- Fill rate: 0.5 GPM (bottle filler)
0.35 GPM (water cooler)
- Front and side antimicrobial push pads
- Flexible guard bubbler
- ADA compliant
- Powder coated sandstone finish

#03542SS (PG8EBF-SS)

- As above with stainless steel finish

Manually Activated VersaFiller Combination Barrier Free Versacooler II



#03576 (PG8SBF)

- Non-filtered
- Manually operated bottle filler
- Cooling capacity: 8 GPH
- Fill rate: 0.5 GPM (bottle filler)
0.35 GPM (water cooler)
- Front and side antimicrobial push pads
- Flexible guard bubbler
- ADA compliant
- Powder coated sandstone finish

#03576SS (PG8SBF-SS)

- As above, with stainless steel finish

Electronic VersaFiller with Vandal Resistant Barrier Free Versacooler II



#88093 (PGV8EBF)

- Non-filtered
- Sensor activated bottle filler
- Integrated bottle counter and filter monitor
- Cooling capacity: 8 GPH
- Fill rate: 0.5 GPM (bottle filler)
0.35 GPM (water cooler)
- Front vandal resistant push button water cooler activation
- Vandal resistant bubbler with flexible guard
- ADA compliant
- Stainless steel finish



Barrier Free Water Cooler with Bottle Filler

Easy to Change Cartridge!



#66861 (A171408F-BF2S)

- Non-filtered
- Sensor activated bottle filler
- Cooling capacity: 8 GPH
- Fill rate: 1 GPM (bottle filler)
0.3 GPM (water cooler)
- Front push button water cooler activation
- Flexible, low flow bubbler
- ADA compliant
- Satin stainless steel finish
- Easy to maintain (stream height adjustment / water flow control)



Manually Activated Bottle Filler



#66740 (BF1S)

- Non-filtered
- Manually operated bottle filler
- Fill rate: 1 GPM
- Designed for Murdock A171 or A111 water coolers
- ADA compliant
- 18 Gauge 304 stainless steel construction

Wall Mount Water Cooler Barrier-Free Access

ELKAY



#03557 (EVS8L)

- Non-filtered
- Cooling capacity: 8 GPH
- Fill rate: 0.5 GPM
- Front and side push bar water cooler activation
- Flexi-guard bubbler
- ADA compliant
- Light gray granite finish

#03557SS (EVS8S)

- As above but with stainless steel finish

Wall Mount Barrier Free Water Cooler

ELKAY



#57338 (EHFSA8L1Z)

- Non-filtered
- Cooling capacity: 8 GPH
- Fill rate: 0.5 GPM
- Front and side push bar water cooler activation
- Flexi-guard bubbler
- ADA compliant
- Light gray granite finish

#57338SS (EHFSA8L1Z)

- As above but with stainless steel finish

Wall Mount Water Cooler

OASIS



#03530 (PG8AC)

- Non-filtered
- Cooling capacity: 8 GPH
- Fill rate: 0.35 GPM
- Front and side antimicrobial push pads
- Flexible guard bubbler
- ADA compliant
- Powder coated sandstone finish

#03530SS (PG8AC-SS)

- As above but with stainless steel finish

Free Standing Compact Water Cooler

OASIS



#53096 (P3CP)

- Non-filtered
- Cooling capacity: 3 GPH
- Fill rate: 0.5 GPM
- Lever handle bubbler activated water cooler
- Flexible guard bubbler
- Floor mounted
- Stainless steel top basin
- Powder coated sandstone finish

Barrier Free Water Cooler



#66735 (A171108F)

- Non-filtered
- Cooling capacity: 8 GPH
- Fill rate: 0.3 GPM
- Front push button water cooler activation
- Flexible, low flow bubbler
- ADA compliant
- Powder coated granite finish
- Easy to maintain (stream height adjustment / water flow control)

#66736 (A171408F)

- As above but with stainless steel finish

Barrier Free Water Cooler



#66742 (A171408S-VR)

- Non-filtered
- Cooling capacity: 8 GPH
- Fill rate: 0.3 GPM
- Front push button water cooler activation
- Stainless steel bubbler
- ADA compliant
- Vandal resistant
- Satin stainless steel finish
- Easy to maintain (stream height adjustment / water flow control)

Bi-Level Barrier Free Versacooler II



#03523 (PG8ACSL)

- Non-filtered
- Cooling capacity: 8 GPH
- Fill rate: 0.35 GPM
- Front and side antimicrobial push pads
- Flexible guard bubbler
- ADA compliant
- Powder coated sandstone finish
- Bi-level (reversible high-low design)

#03523SS (PG8ACSL-SS)

- As above but with stainless steel finish

Barrier Free Bi-Level Water Cooler



#66737 (A172408F-UBL)

- Non-filtered
- Cooling capacity: 8 GPH
- Fill rate: 0.3 GPM
- Front push button water cooler activation
- Flexible, low flow bubbler
- ADA compliant
- Satin stainless steel finish
- Bi-level (reversible high-low design)
- Easy to maintain (stream height adjustment / water flow control)

#67637 (A172108F)

- As above but with powder coated granite finish

Barrier Free Bi-Level Water Cooler

**#66781** (A172108F-UBL-BF1)

- Non-filtered
- Manually operated bottle filler
- Cooling capacity: 8 GPH
- Fill rate: 1 GPM (bottle filler)
0.3 GPM (water cooler)
- Front push button water cooler activation
- Flexible, low flow bubbler
- ADA compliant
- Powder coated granite finish
- Bi-level (reversible high-low design)
- Easy to maintain
(stream height adjustment & water flow control)

#66782 (A172408F-UBL-BF1S)

- As above with stainless steel finish

Barrier-Free Bi-Level
Sensor Activated Water Cooler
with Flexible Bubbler**#66783** (A172108F-UBL-BF2)

- Non-filtered
- Sensor activated bottle filler
- Cooling capacity: 8 GPH
- Fill rate: 1 GPM (bottle filler)
0.3 GPM (water cooler)
- Front push button water cooler activation
- Flexible, low flow bubbler
- ADA compliant
- Powder coated granite finish
- Bi-level (reversible high-low design)
- Easy to maintain
(stream height adjustment & water flow control)

#66784 (A172408F-UBL-BF2S)

- As above but with satin stainless steel finish

Filtered Versatile Bi-Level ADA Water Cooler
And EZH2O® Bottle Filling Station**#88641** (EZSTL8WSSK)

- Includes filter
- Sensor activated bottle filler
- Integrated bottle counter and filter monitor
- Cooling capacity: 8 GPH
- 1.1 GPM quick fill rate
- Front and side push bar water cooler activation
- Flexi-guard bubbler
- ADA compliant
- Stainless steel finish
- Bi-level (reversible high-low design)

Manually Activated Combination
VersaFiller & Universal Bi-Level
Barrier Free Versacooler II**#03546** (PG8SBFSL)

- Non-filtered
- Manually operated bottle filler
- Cooling capacity: 8 GPH
- Fill rate: 0.5 GPM (bottle filler)
0.35 GPM (water cooler)
- Front and side antimicrobial push pads
- Flexible guard bubbler
- ADA compliant
- Powder coated sandstone finish
- Bi-level (reversible high-low design)

#03546SS (PG8SBFSL-SS)

- As above with stainless steel finish

Oasis Dial-A-Drink Bubbler



#05624

All chrome plated
brass cover

Halsey Taylor Drinking Fountain



Halsey Taylor

#05675

1/4 IPS Male

Universal Push Button Bubbler



#05606

- Fits Elkay, Halsey Taylor, Cordley-Hayes, Haws, Oasis, Sunroc and others.
- Stainless steel regulator cartridge

Retro Bubbler Unit #05726



Converts old style handle
fountains to simple push
button bubbler. Includes hole
cover, flange and supply line.

For more complete drinking fountain/water cooler information including
manufacturer spec sheets, rough-ins, etc, visit our website:

www.equipartsdrinkingfountains.com