



EQUIPARTS
Repair Parts Specialists

Clean-Up Specials



INSIDE:

- **Chemicals**
- **Sealants**
- **Gloves**
- **Wipes**
- **Garden Hose**
- **Hydrant Parts**
- **RoofGuards**
- **and More!**

Toll Free: 800-442-6622 • Pittsburgh: 412-781-9100 • Email: info@equiparts.net

www.equiparts.net • www.equipartsdrinkingfountains.com

**INTERACTIVE
PDF**



Wipe-Off Vandalism Mark Remover



REMOVES MOST:

- Spray Paint
- Fingerprints
- Pencil Marks
- Tape Residue
- Crayons
- Marker Inks
- Ball Point Inks
- Stencil Inks
- Scuff Marks
- Printer's Ink
- Mimeo Inks
- Road Tar

#79643 - 16.5 oz can

Coil Cleaner



- Cleans and deodorizes cooling coils in air conditioners
- Keeps units running clean
- No-rinse formula
- Non-acid & non-caustic
- Safe for the environment

#79470 - 20 oz can

Solvent Degreaser



- Removes oil, grease, lubricants, dirt, tar, sludge as well as other contaminants
- Plastic safe
- Non-chlorinated
- Leaves no residue
- Cleans instantly & evaporates fast

#79764 - 20 oz can



EQUI-PRO Hand And Surface Towel Wipes

#79758

These two-sided towels have an abrasive side for tough jobs, and a smooth side for delicate jobs. Fortified with unmatched skin conditioners and new generation cleaning agents. Contains 70 wipes.



EQUI-PRO Tool Conditioning Towel Wipes

#79760

Cleans and removes the toughest soils, corrosion, and grease while protecting your tools with a built-in rust inhibitor and lube. Can be used anywhere you need to clean, condition, and protect your tools! Contains 70 wipes.



EQUI-PRO Paint & Graffiti Removing Towel Wipes

#79759

The ultimate cleaning tool for paints and petroleum based products. Perfect for surface prep applications. Excellent for quick removal of graffiti on almost anything. Also removes adhesives, ink, marker, tar, and much more. Contains 70 wipes.

RoofGuards Eliminate Standing Water On Rooftops!



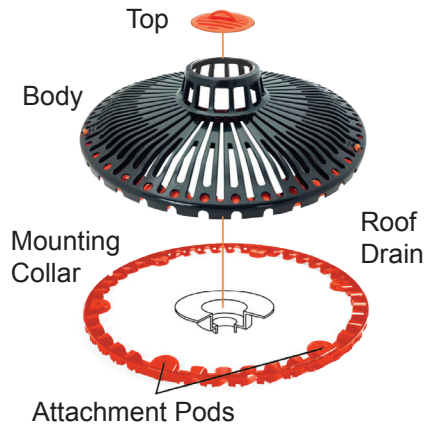
These RoofGuards are ideal to replace existing roof drain domes on the roof of schools, warehouses, factories, office buildings, and any other building that has standing water on the roof due to clogged roof drain domes.

- Patented design increases surface area by up to 5x or more, making a RoofGuard protected drain virtually unclogable.
- Eliminates leaks and costly repairs caused by clogged drains.
- RoofGuard can replace any roof drain dome strainer up to 15" in diameter.
- **Adhesive is included**

Polyethylene RoofGuard

No tools required!

#66298PK



Cast Iron RoofGuard

Heavy Duty!

#68004

Cast Iron Roof Guard Body



Universal Membrane Clamp Ring



Everseal Pick-Proof Adhesive Sealant

#60500137

Clear

Super Durable!

- Forms a permanent, waterproof, and impact-resistant bond with many substrates.
- Ultra flexible. 500% elongation when fully cured.
- For professional and industrial use.



100% Silicone Sealant

Superior Quality Multi-Purpose Sealant

#79096 - White

10 oz. Cartridge

#79097 - Clear

10 oz. Cartridge

Your Choice!



Dyna Grip Adhesive

(Formerly Beats Nails)

#79105

10 oz. Cartridge

- For general construction, remodeling, maintenance and repair projects.
- Provides a high-strength, heat and water resistant bond to a variety of substrates.
- Interior/exterior use.



Heavy Duty Precision Caulking Gun

#79107



- Ideal for all construction adhesives
- E-Z Thrust mechanism
- Caulk Buddy™ finishing tool for perfect bead, and two caps to keep caulk fresh.
- Spout Cutter/Seal Puncture Tool

Coated Nylon Lightweight Utility Gloves *Perfect for Spring/Summer Work!*



- #61962SME** Small
- #61962ME** Medium
- #61962E** Large
- #61962XLE** X-Large

Coated Cotton Poly Grip Gloves *Protect Everyone!*



- #37360SE** Small
- #37360ME** Medium
- #37360E** Large
- #37360XLE** X-Large

Ambi-Dex Nitrile Disposable Gloves *Textured Grip & Powder Free*



4 mil (medium)

- #37918M** Medium
- #37918L** Large
- #37918XL** X-Large

*Your Choice!
100 Per Box*

5 mil (heavy)

- #37919M** Medium
- #37919L** Large
- #37919XL** X-Large

*Your Choice!
100 Per Box*

Blue Cotton Equi-Rags



- #36149**
4 lb. Bag

*A Must For Every Shop!
Super Absorbent!*

50' Outdoor Extension Cords *Ultra Flexible, Water Resistant, Flame Retardant*



- #33648**
Heavy Duty
50' x 14/3 Gauge



- #33649**
Extra Heavy Duty
50' x 12/3 Gauge

Magnetic Tie Rope

*Hang your cables, cords, hoses, and more
from a metal surface within easy reach!*



- #37961**
Holds up to 8 lbs.

- #37933**
Holds up to 5 lbs.

Heavy Duty Commercial Grade Garden Hose



A rugged, heavy reinforced rubber hose used by contractors. Six-ply, commercial duty. Solid brass, crush proof connections. Formulated for super softness and super flexibility. Made in the U.S.A.

- #28329** 5/8" x 25' Gray
- #28331** 5/8" x 75' Gray
- #28330** 5/8" x 50' Gray
- #28328** 3/4" x 50' Red

Hot Water (Red) Professional Grade Garden Hose



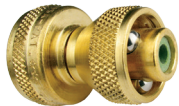
Ideal for work where hot water is desirable. Safe for water up to 200°. Solid brass, crush proof connections.

- #28333** 5/8" x 50'



Insulated Industrial Spray Nozzle #86156

Bronze construction. Stainless steel seat design prevents nozzle seat leakage. Rev-o-cap renewable cartridge unit design for greater longevity. Flow rates: 2.5-7 gpm at 50-80 psi



World's Greatest Hose Nozzle #28338

Solid, all brass construction



Hose Shut-Off *A Must Buy With Our Hose Nozzle!* #52869

Heavy duty brass. Full port. Swivel end.



Double Hose "Y" with Shut Off #52866

All brass construction. Operates two hoses from one faucet. Positive, leak-proof, independent shut-offs.



Deluxe Aerator with Garden Hose Adapter #05331

Adapts faucet aerator to 3/4" male garden hose threads. Great for quick hook-up in lav or kitchen!

Female x Male Hose Adapter

Solid brass. Rustproof. Precision machine threads.



FEM x MALE

#28312 1/2" IPS x Hose

#28313 Hose x 1/2" IPS

#28314 3/4" IPS x Hose

#28315 Hose x 3/4" IPS

Your Choice!

Double Male Hose Nipple

Solid rod brass. Precision machine threads.



MALE x MALE

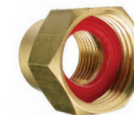
#28300 Hose x 1/2" MIPS

#28301 Hose x 3/4" MIPS

#28320 3/4" Hose x Hose with 1/2" FPT

Double Female Hose Coupling

Solid rod brass. Precision machine threads.



FEM x FEM

#28303 1/2" IPS x Hose

#28304 3/4" IPS x Hose

#28319 Swivel Type Hose x Hose

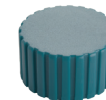
Brass 3/4" Hose End Cap



#28306

Includes Washer

Plastic 3/4" Hose End Cap



#28307

Includes Washer

Hose Tap Thread Cleaner



#37876

Cleans threads on hose taps. Use with 3/8" ratchet drive or pliers. Plated and heat treated steel.

Backflow Preventer Hose Thread *Code approved!*



#50147

Rough Brass. 3/4" hose thread inlet and outlet. Used with hose thread outlet faucets.

*Also available
in chrome*

Go-Specs Foam Lined Hybrid Safety Glasses/Goggles with Temples & Clear Lenses

#37788



A specialty glass/goggle that provides unparalleled protection from wind-blown dust/dirt and particulates, adjustable temples, EVA foam liner, anti-fog coating.

Go-Specs Foam Lined Hybrid Safety Glasses/Goggles with Temples, Clear Lenses & Strap

#37789



As above, with strap. A modified version of our original Go-Spec with interchangeable temples/FR straps, a ballistic rating, EVA closed cell FR foam liner and anti-fog coating. Provides an extra measure of protection in dusty and dirty environments.

Single Edge Razor Blades 100Pk

#34336



- Pack of 100

Spray Air Blaster- 10 oz.

#79433



- Blast off dust and dirt!
- For electronic equipment and parts

Hydrant Repair Kits

#50910

Replacement for **ZURN**
Z-1300RK, Z-1310RK
Repair Kits



#57670

Replacement for **ZURN**
Z-1305RK, Z-1315RK,
Z-1325RK (Use 2)
Repair Kits



#45549

Repair Kit for **ZURN**
Ceramic Style Unit



#50909

Old Style
Replacement for
SMITH #HPRK-12



#52506

New Style
Replacement for
SMITH #5509QT,
5560QT & 5609QT



#56310

Replacement for
WADE #WK11
Uses 3/8-16 threaded rod



#59653

WOODFORD
70 Series Hydrant



**A TMS
Exclusive!**



Four Way Key Fits Zurn #03029Z

- Fits 1/4", 9/32", 5/16", and 3/8"
- Fits stopcocks, sillcocks & valves



Four Way Key

#03029

- Fits 1/4", 9/32", 5/16", and 11/32"
- Fits stopcocks, sillcocks & valves



Key For Zurn Hydrants #45594

- Fits 3/8" square



Hydrant Key

#54267

- Fits 9/32" square
- 3-1/4" long
- Also fits sillcocks



Hard to Find Hydrant Parts!